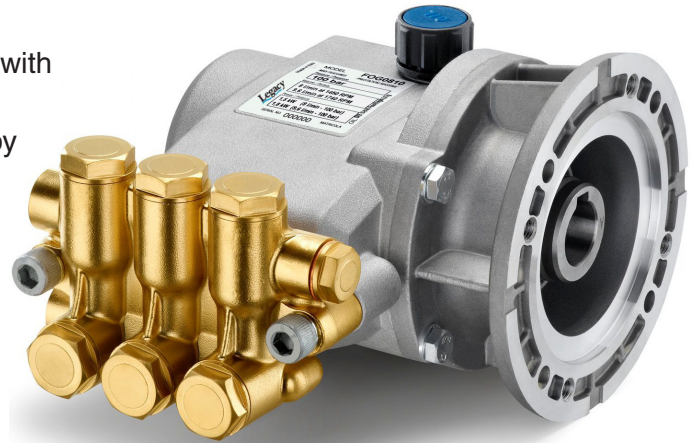


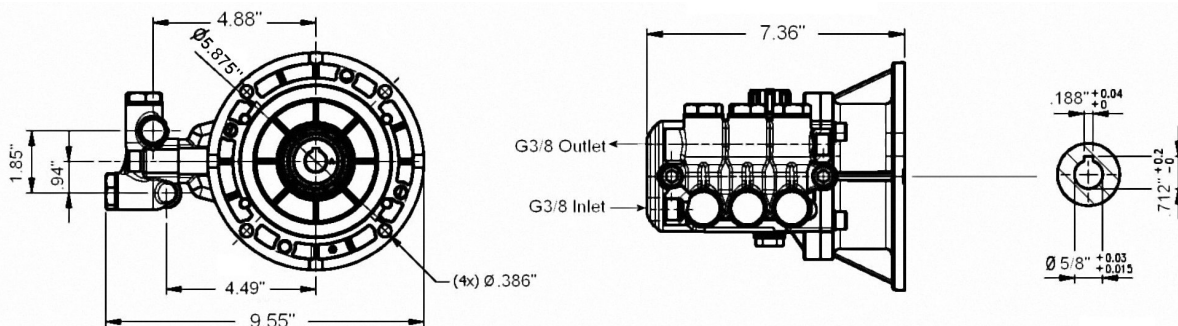
FEATURES

- Compact design
- Forged brass manifold.
- Hollow-shaft for coupling to solid shaft electric motors with NEMA 56C 5/8" shaft.
- Pump can be reversed from left to right motor mount by rotating pump 180 degrees.
- Solid ceramic plungers with mirror finish and corrosion resistance.
- Stainless steel inlet and discharge valve assemblies.
- Forged valve caps with recessed O-rings to withstand high pressures..
- Dacromet® coated manifold bolts for extra corrosion resistance.
- Parker V-seals for long life performance.



SPECIFICATIONS

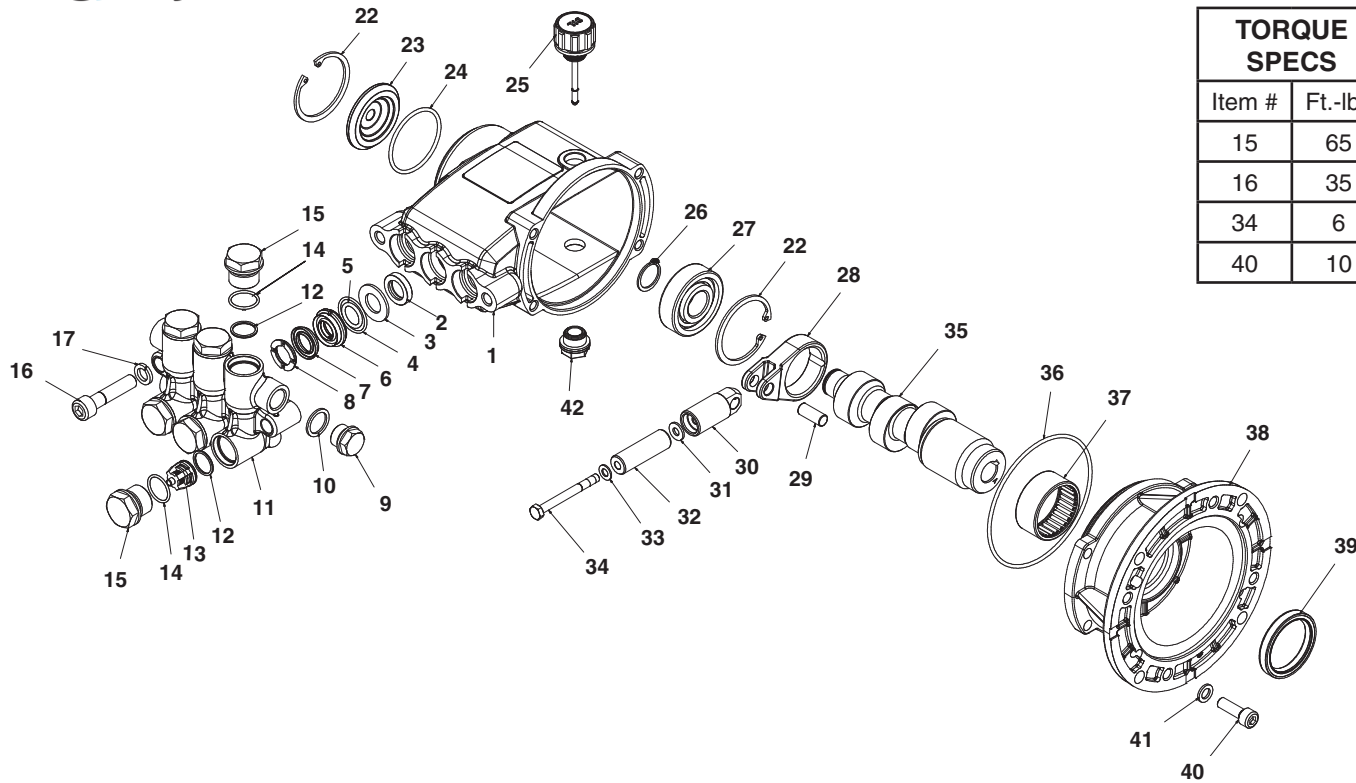
PUMP MODEL	FOG0614R	FOG1214R	FOG1914R	FOG2514R
Part Number	8.754-500.0	8.754-501.0	8.754-502.0	8.754-503.0
Maximum Volume (GPM)	.6	1.2	1.9	2.5
Max. Discharge Pressure (PSI)	1450			
Maximum Pump Speed	1740			
Maximum Inlet Pressure	125 PSI			
Maximum Inlet Vacuum	5 ft. water (6.5in. HG)			
Bore	15 mm			
Stroke	3.0 mm	5.6 mm	8.5 mm	10.9 mm
Crankcase Oil Capacity	28.5 oz. SAE 10W-40			
Maximum Fluid Temperature	150° F			
Inlet Port Thread	3/8 - 19 BSPP-F			
Discharge Port Thread	3/8-19 BSPP-F			
Shaft Diameter	NEMA 56C 5/8" Hollow Shaft			
Weight	12 lbs			
Dimensions (LxWxH)	9.55 x 7.36 x 6.25 in.			



LEGACY PUMPS • USA

Phone: (800) 752-0177 or consult our web page at www.spraymart.com

Legacy FOG Series Pump



TORQUE SPECS	
Item #	Ft.-lbs
15	65
16	35
34	6
40	10

PARTS LIST

ITEM	PART NO.	DESCRIPTION	QTY	ITEM	PART NO.	DESCRIPTION	QTY	ITEM	PART NO.	DESCRIPTION	QTY
1	8.754-554.0	Crankcase	1	22	8.754-557.0	C-Clip Ø52 UNI 7437	2	36	8.754-570.0	O'Ring, Ø101.27 x 2.62	1
2*	See Kit Below	Plunger Oil Seal	3	23	8.754-558.0	Sight Glass	1	37	8.754-571.0	Bearing Hk 4020	1
3*	See Kit Below	Pressure Ring	3	24	8.754-559.0	O'Ring, Ø52.54 x 47.30	1	38	8.754-572.0	Flange, NEMA 56C	1
4*	See Kit Below	O'Ring, Ø1.78 x 25.12	3	25	9.803-957.0	Oil Dip Stick	1	39	8.754-573.0	Oil Seal 40x52x7	1
5*	See Kit Below	O'Ring, Ø20.32 x 15.08	3	26	8.754-560.0	C-Clip Ø20 UNI 7435	1	40	8.754-574.0	Screw, M8 x 25 UNI 5931	4
6*	See Kit Below	Intermediate Ring	3	27	8.754-561.0	Ball Bearing 6304-20x52x15	1	41	9.802-884.0	Lock Washer	4
7*	See Kit Below	V-Seal	3	28	8.754-562.0	Connecting Rod	3	42	8.717-492.0	Crankcase Plug	1
8*	See Kit Below	Intermediate Ring	3	29	9.803-965.0	Connecting Rod Pin	3				
9	8.707-262.0	Brass Plug G3/8	1	30	8.754-563.0	Plunger Rod	3				
10	8.719-008.0	Copper Washer G3/8	1	31*	8.754-564.0	Copper Spacer	3				
11	8.754-555.0	Manifold Housing	1	32*	8.754-565.0	Plunger 15mm	3				
12	8.717-233.0	O'Ring, Ø1.78 x 15.60	6	33*	8.754-092.0	Copper Spacer	3				
13	See Kit Below	Valve Assembly	6	34*	8.752-841.0	Screw, M6 x 60	3				
14	9.803-948.0	O'Ring, Ø2.62 x 18.77	6	35	8.754-566.0	Crankshaft 5/8" (0614)	1				
15	9.803-949.0	Manifold Plug	6	35	8.754-567.0	Crankshaft 5/8" (1214)	1				
16	8.754-556.0	Screw, M10 x 45	2	35	8.574-568.0	Crankshaft 5/8" (1914)	1				
17	9.802-890.0	Lock Washer	2	35	8.754-569.0	Crankshaft 5/8" (2514)	1				

* Available in Kit (See Below)

REPAIR KITS

REPAIR KIT NO.	8.754-575.0	8.754-576.0	8.754-577.0	8.754-578.0
KIT DESCRIPTION	Seal Packing 15mm	Plunger 15mm	Complete Valve	Oil Seals
ITEM NUMBERS INCLUDED	3, 4, 5, 6, 7, 8	31, 32, 33, 34	12, 13, 14	2
NO. OF CYLINDERS KIT WILL SERVICE	1	1	1	3