



KÄRCHER

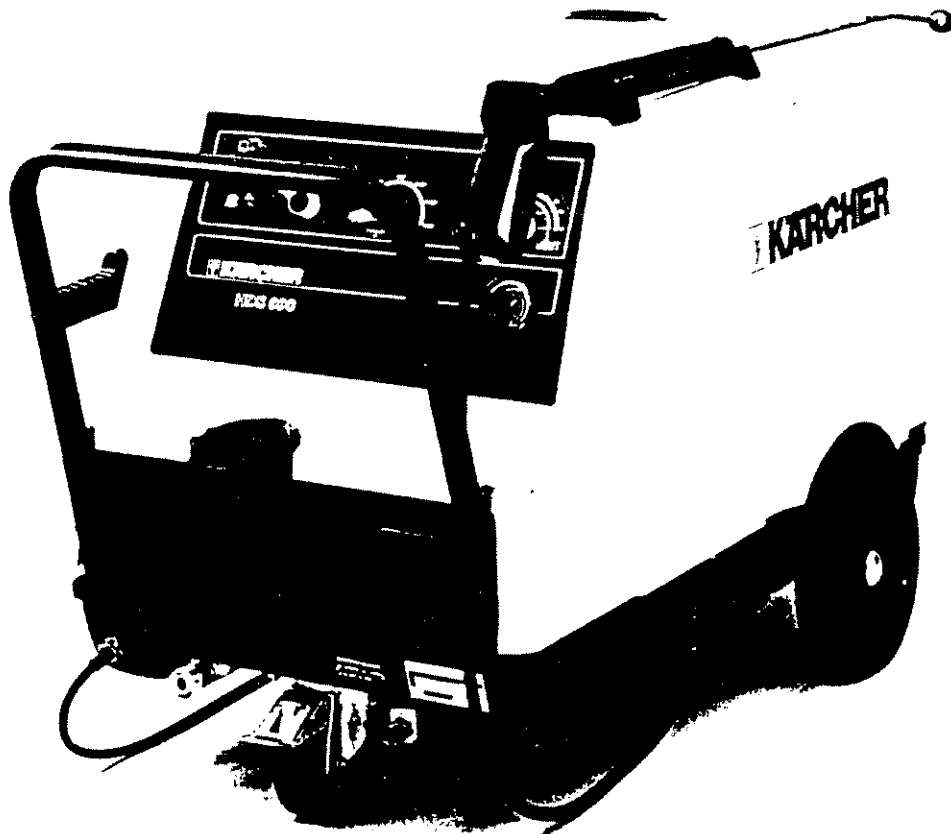
Ersatzteilliste

Spare Parts List

Liste des pièces de rechange

HDS 750

1.625-906 USA 208-240 V 1 ~ 60 Hz



HDS 750

Werknummer Ihres Gerätes (siehe Typenschild) /
Serial No. of your machine (see nameplate) /
No. de série de votre appareil (voir plaque signalétique)

(hier eintragen / enter here / marquer ici)

Gruppenübersicht

| | Seite | |
|--------------------------------|-------|-------|
| Gruppe 1: Einzelteile | | 4-5 |
| Gruppe 2: Pumpensatz | | 8-15 |
| Gruppe 3: Motor | | 16-17 |
| Gruppe 4: Gebläse | | 18-19 |
| Gruppe 5: Brennstoffpumpe | | 20-21 |
| Gruppe 6: Elektrogeräteschrank | | 22-23 |
| Gruppe 7: Durchlauferhitzer | | 24-25 |
| Gruppe 8: Schwimmerventil | | 26-27 |
| Gruppe 9: Sicherheitsblock | | 28-29 |
| Gruppe 10: Zubehör | | 30-31 |
| Gruppe 11: Instrumententafel | | 34-35 |

Contents

| | Page | |
|---------------------------------|------|-------|
| Group 1: Component parts | | 4-5 |
| Group 2: Pump Unit | | 8-15 |
| Group 3: Motor | | 16-17 |
| Group 4: Blower | | 18-19 |
| Group 5: Fuel Pump | | 20-21 |
| Group 6: Electrical Cabinet | | 22-23 |
| Group 7: Continuous Flow Boiler | | 24-25 |
| Group 8: Float Valve | | 26-27 |
| Group 9: Safety System | | 28-29 |
| Group 10: Accessories | | 30-31 |
| Group 11: Control panel | | 34-35 |

Groupes de pièces

| | Page | |
|--|------|-------|
| Groupe 1: Pièces détachées | | 4-5 |
| Groupe 2: Moto-pompe | | 8-15 |
| Groupe 3: Motor | | 16-17 |
| Groupe 4: Ensemble mécanique | | 18-19 |
| Groupe 5: Pompe à combustible | | 20-21 |
| Groupe 6: Coffret électrique | | 22-23 |
| Groupe 7: Chaudière à circulation forcée | | 24-25 |
| Groupe 8: Bac à flotteur | | 26-27 |
| Groupe 9: Bloc de sécurité | | 28-29 |
| Groupe 10: Accessoires | | 30-31 |
| Groupe 11: Tableau | | 34-35 |

Bestellhinweis / Specimen order / Exemple de commande

Bei Ihrer Bestellung sind unbedingt anzugeben:
Always quote the following details with your order:
Mentionnez à l'occasion de chaque commande de pièces:

1.

Gerätetyp
Machine model
Type d'appareils

| |
|--|
| |
|--|



Siehe Typenschild
See name-plate
Voir plaque signalétique

2.

Herstell-Nr.
Serial-No.
No. de série

3.

Benennung
Description
Désignation

4.

Teile-Nr.
Part No.
Référence

| | |
|--|--|
| | |
|--|--|



Siehe Ersatzteilliste
See spare parts list
Voir liste des pièces de rechange

5.

Stückzahl
Pièce No.
No. des pièce

- Die Ersatzteile, welche als Meterware geliefert werden, sind auf Einbaulänge zu kürzen.

Parts which are delivered as piece goods should be shortened according to the installation length.

Les pièces détachées qu'on par marchandise au mètre, doivent être écourtées selon longueur totale.

- Diese Ersatzteilliste erscheint in gedruckter Form sowie als Mikrofiche. Bei Querverweisen bezieht sich die Angabe „Seitenzahl“ auf die gedruckte Ersatzteilliste und die Angabe „Bildtafel“ auf die Mikrofilm-Ausgabe.

This spare parts list is published both in printed form and as a microfiche. In the cross-references, „page number“ refers to the printed spare parts list and „display table“ to the microfilm edition.

Cette liste de pièces de rechange est aussi bien imprimée que publiée sous forme de microfiche. Les indications transversales renvoient au „numéro de page“ sur la liste imprimée des pièces de rechange et à la „planche“ sur la microfiche.

Technische Änderungen im Rahmen der Weiterentwicklung sowie das Recht der ausschließlichen Auswertung unseres geistigen Eigentums behalten wir uns vor. Vervielfältigung und Nachdruck nur mit Genehmigung und Urheberhinweis möglich.

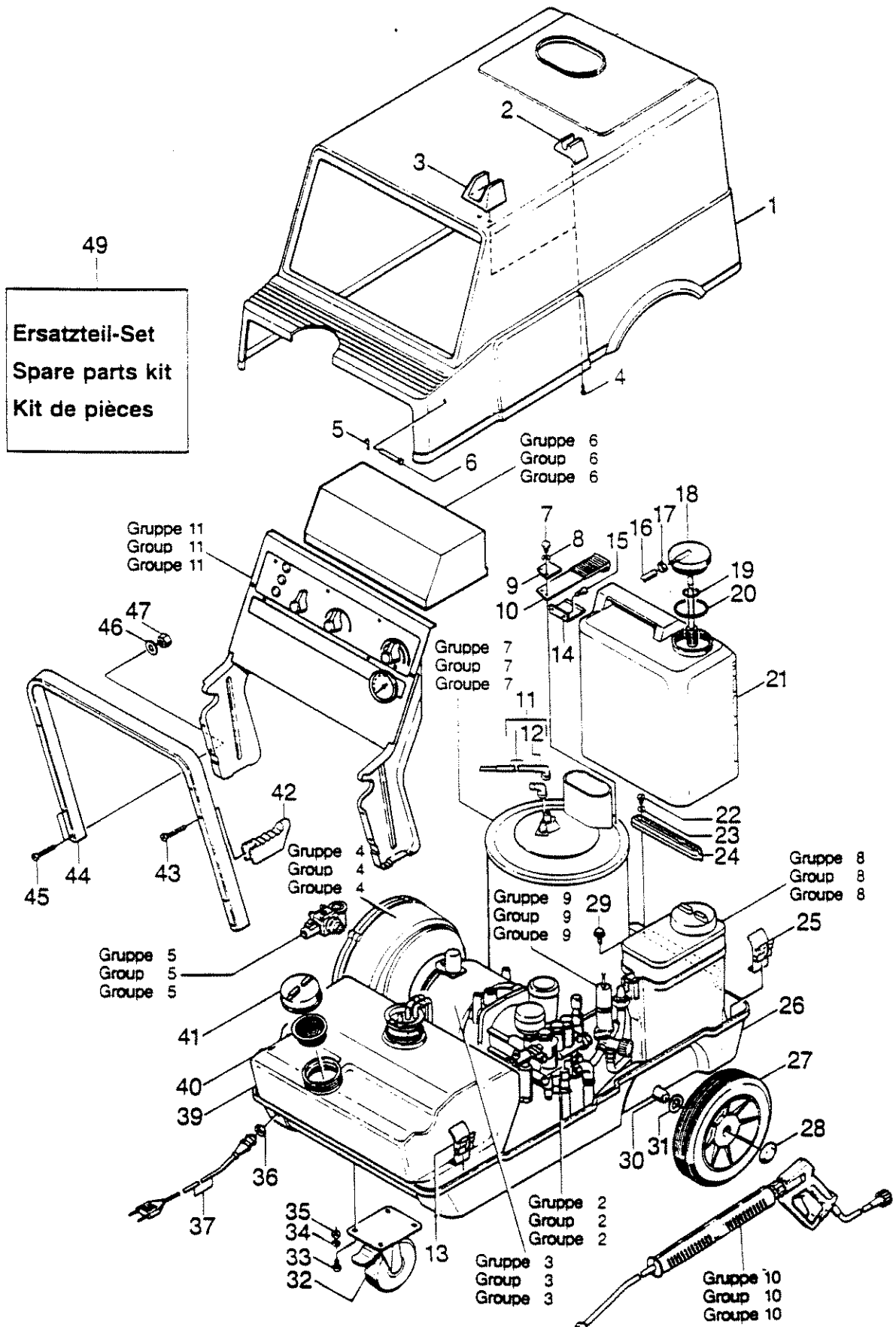
We reserve the right to make technical changes in the course of development work and the right to make exclusive use of our intellectual property. This spare parts list may be duplicated or reprinted only with our approval and with acknowledgement of our

Gruppe 1: Einzelteile
 Group 1: Component Parts
 Groupe 1: Pièces détachées

HDS 750

49

Ersatzteil-Set
Spare parts kit
Kit de pièces



Gruppe 1: Einzelteile
 Group 1: Component Parts
 Groupe 1: Pièces détachées

HDS 750

| Pos. | Benennung | Teil-Nr. | St. im Gerät |
|------|---|-----------|---------------|
| Ref. | Description | Part No. | Quant. p. gr. |
| Pos. | Désignation | Référence | Nbr. |
| 1 | Haube / Cover / Couvercle | 5.068-233 | 1 |
| 2 | Halter / Support / Appui | 5.042-406 | 1 |
| 3 | Halter / Bracket / Fixation | 5.042-402 | 1 |
| 4 | Schraube 4.2x13 / Screw / Vis | 6.303-047 | 1 |
| 5 | Sicherung / Safety Device / Fusible de Securite | 6.343-006 | 2 |
| 6 | Boizen / Pin / Axe | 6.373-322 | 2 |
| 7 | 6-Kant-Schraube M 5x12 / Hex. Head Cap Screw / Boulon A Six Pans | 7.304-371 | 1 |
| 8 | Federung B 5 / Spring Washer / Rondelle Grower | 7.313-002 | 1 |
| 9 | Winkel / Angle / Equerre | 5.021-953 | 1 |
| 10 | Halter / Support / Appui | 5.042-257 | 1 |
| 11 | Zündkabel / Ignition Cable / Cable D'allumage | 6.641-180 | 2 |
| 12 | Kerzenstecker / Terminal / Anti-Parasite | 6.618-076 | 2 |
| 13 | Halter / Support / Appui | 5.042-320 | 1 |
| 14 | Platte / Plate / Plaque | 5.002-402 | 1 |
| 15 | Schneidschraube M 5x12 / Self-Tapping Screw / Vis Autotaraudeuse | 6.303-012 | 2 |
| 16 | Schlauch Nw 7 / Flexible Tube / Tuyau Flexible | 6.388-225 | 2m |
| 17 | Schlauchscheile / Hose Band Clip / Collier de Serrage | 6.388-559 | 2 |
| 18 | Formteil / Preform / Preforme | 5.030-355 | 1 |
| 19 | O-Ring 45x4.5 / O-Ring / Joint Torque | 6.362-490 | 1 |
| 20 | O-Ring 80x4.5 / O-Ring / Joint Torque | 6.362-491 | 1 |
| 21 | Tank / Tank / Reservoir | 5.071-025 | 1 |
| 22 | Linsenschraube M 5x16 / Oval Head Screw / Vis A Tete Bombee | 7.306-308 | 2 |
| 23 | Scheibe A 5.3 / Disk / Disque | 7.312-278 | 2 |
| 24 | Auflager / Support / Appui | 5.057-024 | 1 |
| 25 | Halter / Support / Appui | 5.042-256 | 2 |
| 26 | Rahmen / Frame / Cadre | 5.050-005 | 1 |
| 27 | Scheibenrad D 300 / Web Disk Wheel / Roue Pleine | 6.435-074 | 2 |
| 28 | Schnellbefestigung D 25 / Quick / Fastener / Attache Rapide | 6.343-137 | 2 |
| 29 | Schneidschraube M 8x16 / Self-Tapping Screw / Vis Autotaraudeuse | 6.303-031 | 2 |
| 30 | Achse / Wheel Shaft / Essieu | 5.105-063 | 1 |
| 31 | Scheibe 26 / Washer / Rondelle | 7.312-060 | 8 |
| 32 | Lenkrolle 140 / Castor / Roue Pivotante | 6.435-071 | 1 |
| 33 | 6-Kant-Schraube M 8x16 / Hex. Head Cap Screw / Boulon A Six Pans | 7.304-395 | 4 |
| 34 | Scheibe B 8.4 / Disk / Disque | 7.312-004 | 4 |
| 35 | 6-Kant-Mutter M 8 / Hexagon Nut / Erou Hex. | 7.311-004 | 4 |
| 36 | Gegenmutter PG 13.5 / Conternut / Contre-Erou | 6.641-480 | 1 |
| 37 | Kabel / Cable / Cable | 6.641-139 | 1 |
| 39 | Tank / Tank / Reservoir | 5.071-024 | 1 |
| 40 | Sieb D 70 / Strainer / Passoir | 6.414-275 | 1 |
| 41 | Deckel / Cover / Couvercle | 5.063-217 | 1 |
| 42 | Halter / Support / Appui | 5.042-253 | 1 |
| 43 | LSK-Blechschrabe 5,5x55 / Screw / Vis | 6.305-005 | 3 |
| 44 | Griff / Handle / Poignee | 5.321-121 | 1 |
| 45 | Zylinderschraube IS M 6x50 / Cheese Head Screw / Vis A Tete Cylindr. | 7.306-511 | 4 |
| 46 | Scheibe A 6.4 / Disk / Disque | 7.312-276 | 4 |
| 47 | 6-Kant-Mutter M 6 / Hexagon Nut / Erou Hex. | 7.311-425 | 4 |
| 49 | ET-Set siehe Seite 6 (Bildtafel J 16) / Spare Parts Kit see Page 6 (Board J 16) / Kit de pieces voir Page 6 (Tableau J 16) | 2.883-017 | 1 |

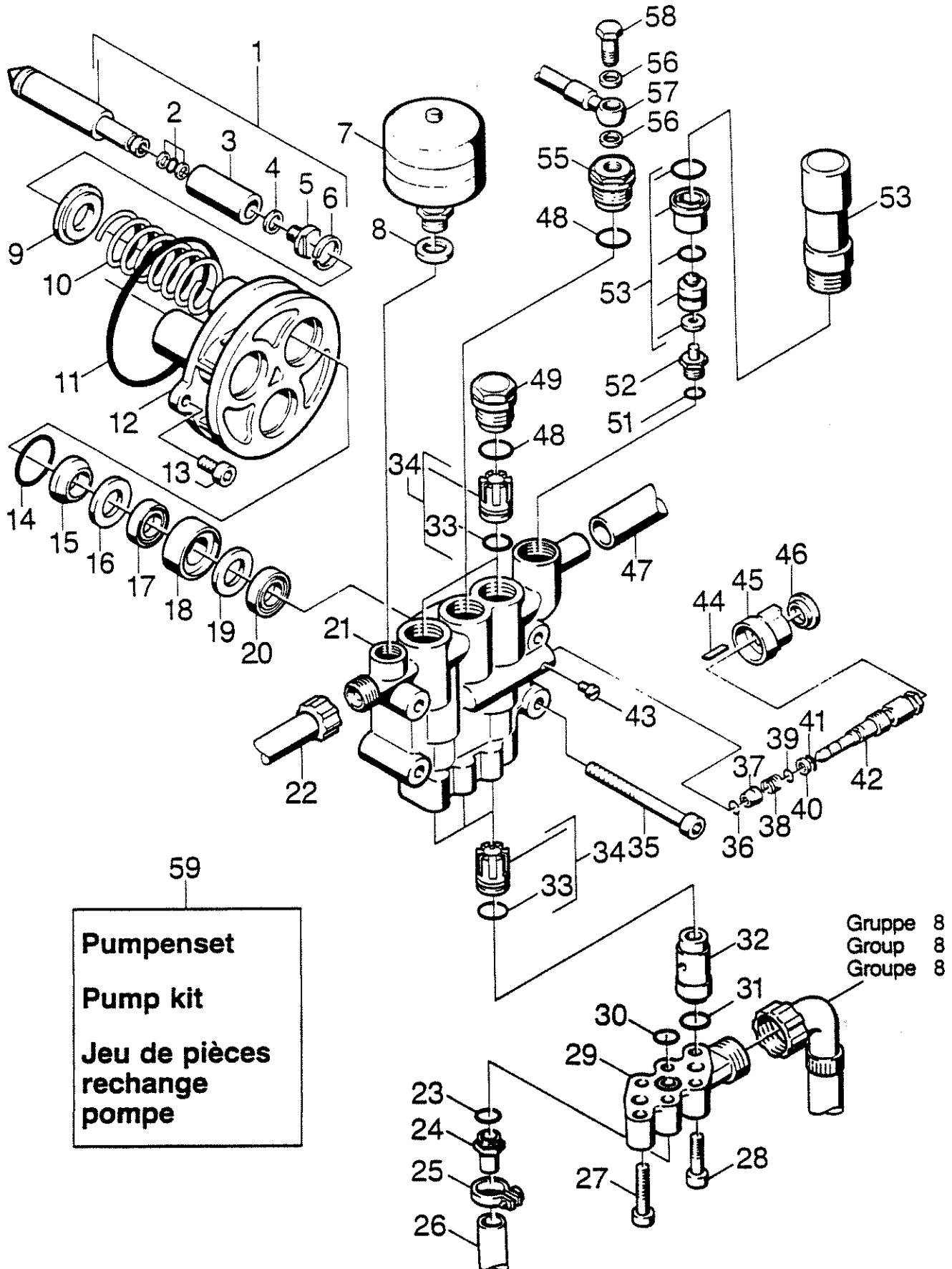
Teile sind im Ersatzteilset 2.883-017 enthalten

Parts included in spare parts kits 2.883-017

Les pièces comprises dans le jeu de pièces rechange 2.883-017

| Seite Page Page | Bildtafel Board Tableau | Pos. Item Pos. | Benennung Designation Désignation | Teile-Nr. Part No. No. pièces | Stck. Qty. Nbr. |
|-----------------------|-------------------------------|----------------------|---|-------------------------------------|-----------------------|
| 9/13 | B2 | 11 | O-Ring 110×1,78 / O-ring / Joint torique | 6.362-448 | 1 |
| | | 14 | O-Ring 34,65×1,78 / O-ring / Joint torique | 6.362-484 | 3 |
| | | 15 | Nutring 20×28×6/8 / Packing ring / Joint rainure | 6.365-052 | 3 |
| | | 17 | Nutring 20×30×8/4 / Packing ring / Joint rainure | 6.365-053 | 3 |
| | | 19 | Scheibe / Washer / Rondelle | 5.115-224 | 3 |
| | | 20 | Nutring 20×28×5 / Packing ring / Joint rainure | 6.365-061 | 3 |
| | C2 | 36 | Sprengring A 6 / Snap ring / Jonc d'arret | 6.343-143 | 1 |
| | | 39 | O-Ring komplett / O-ring complet / Joint torique complet | 6.362-477 | 1 |
| | | 40 | O-Ring komplett / O-ring assy. Joint torique complet | 6.362-365 | 1 |
| | | 41 | O-Ring 8×1,5 / O-ring / Joint torique | 6.362-388 | 1 |
| 21 | B5 | 3 | O-Ring / O-ring / Joint torique | 6.472-111 | 1 |
| | | 4 | O-Ring / O-ring / Joint torique | 6.472-112 | 1 |
| | | 5 | Filtereinsatz / Filter element / Cartouche de filtre | 6.472-113 | 1 |
| 29 | B9 | 36 | Sieb / Filter / Crepine | 6.414-111 | 1 |
| | | 37 | O-Ring 17,3×2,4 / O-ring / Joint torique | 6.362-160 | 1 |
| 31 | B10 | 16 | O-Ring-Set (5 Stück) / O-ring set (5) / Jeu de joints (5 joints) | 2.880-296 | 1 |
| | | 25 | Überwurfmutter M 18×1,5 / Union nut / Ecrou-raccord | 5.401-129 | 1 |

bis Werk-Nr. 16626 / up to serial No. 16626 / jusqu'au du numero de fabrication N. 16626



Gruppe 2: Pumpensatz
 Group 2: Pump Unit
 Groupe 2: Moto-pompe

HDS 750

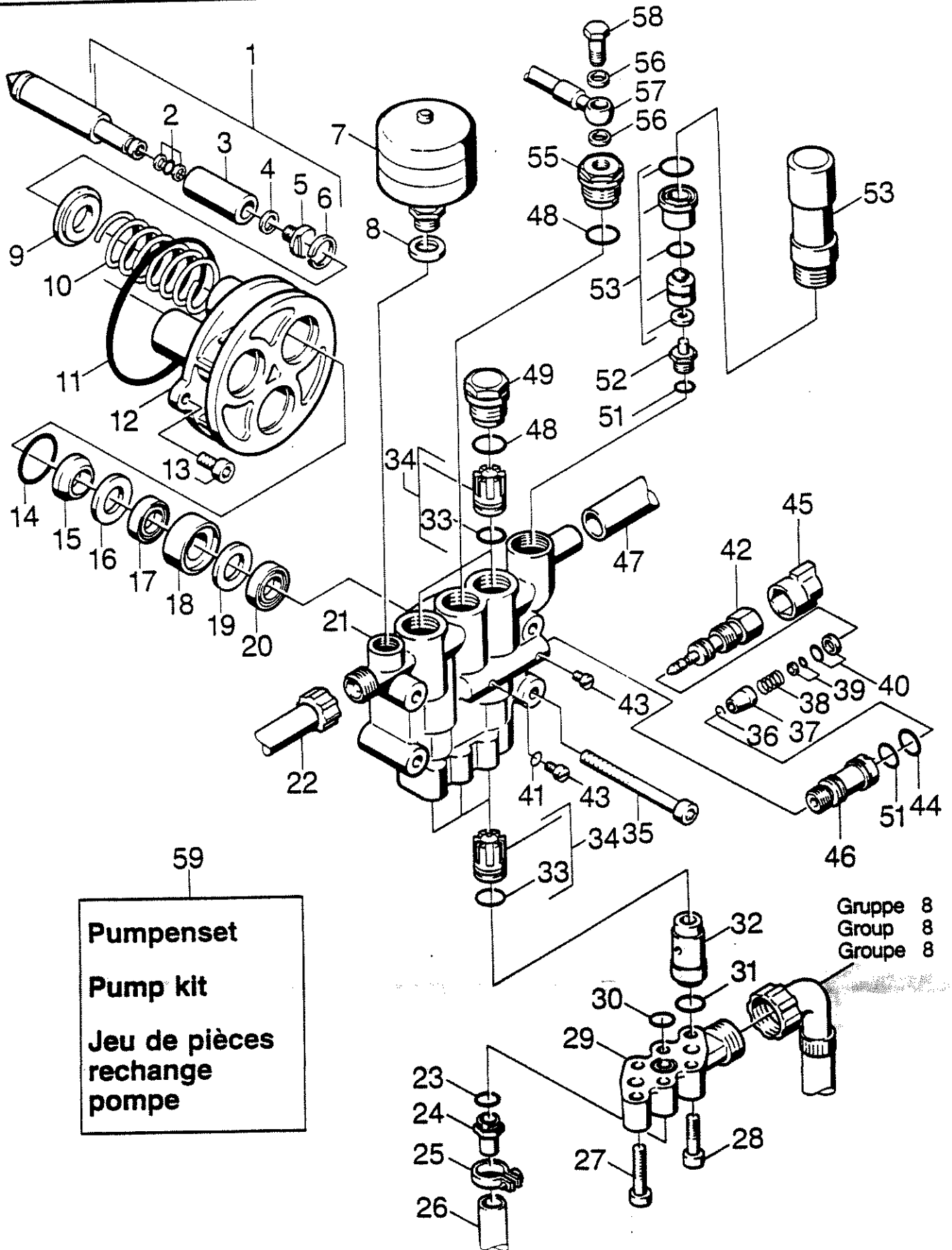
ab Werk-Nr. 16627 / from serial No. 16627 / à partir du numero de fabrication N. 16627

| Pos. Ref. Pos. | Benennung Description Désignation | Teil-Nr. Part No. Référence | St. im Gerät Quant. p. gr. Nbr. |
|----------------------|---|-----------------------------------|---------------------------------------|
| 1 | Kolben Komplett / Piston Complete / Piston Complete | 4.553-076 | 3 |
| 2 | O-Ring Komplett / O-Ring Compl. / Joint Torique Compl. | 6.362-365 | 3 |
| 3 | Keramikhülse / Ceramic Pod / Douille Ceramique | 5.110-220 | 3 |
| 4 | Dichtung / Joint Ring / Anneau D'etancheite | 5.363-162 | 3 |
| 5 | Formschraube / Special Screw / Vis de Forme | 5.305-111 | 3 |
| 6 | Sprengnng 20 / Sealing Ring / Circlip | 6.472-331 | 3 |
| 7 | Druckspeicher 200 / Pulsation Damper / Accum. de Pression | 6.505-028 | 1 |
| 8 | Dichtung A 16x20 / Joint Ring / Anneau D-etancheite | 7.362-007 | 1 |
| 9 | Scheibe / Disk / Disque | 5.115-289 | 3 |
| 10 | Schraubfeder / Coil Spring / Ressort A Boudin | 5.332-150 | 3 |
| 11 | O-Ring 100x1,78 / O-Ring / Joint Torique | 6.362-448 | 1 |
| 12 | Gehäuse / Housing / Boitier | 5.060-182 | 1 |
| 13 | Zylinderschraube IS M 8x20 / Cheese Head Screw / Vis A Tete Cylindrique | 7.306-041 | 3 |
| 14 | O-Ring 34,65x1,78 / O-Ring / Joint Torique | 6.362-484 | 3 |
| 15 | Nutring 20x28x6/8 / Grooved Ring / Joint En U A Levres | 6.365-052 | 3 |
| 16 | Scheibe / Disk / Disque | 5.115-255 | 3 |
| 17 | Nutring 20x30x8/4 / Grooved Ring / Joint En U A Levres | 6.365-053 | 3 |
| 18 | Buchse / Bush / Boite | 5.112-181 | 3 |
| 19 | Scheibe / Disk / Disque | 5.115-224 | 3 |
| 20 | Nutring / Grooved Ring / Joint En U A Levres | 6.365-061 | 3 |
| 21 | Zylinderkopf / Cylinder Head / Culasse de Cyl. | 4.550-112 | 1 |
| 22 | HD-Schlauch 8/590 / Hd-Hose / Flexible Hd | 6.388-859 | 1 |
| 23 | O-Ring 15x2 / O-Ring / Joint Torique | 6.362-427 | 1 |
| 24 | Ventil / Valve / Soupape | 4.580-114 | 1 |
| 25 | Schlauchschelle 12/9 / Hose Band Clip / Collier de Serrage | 6.388-515 | 1 |
| 26 | Schlauch NW 7 / Flexible Tube / Tuyau Flexible | 6.388-194 | 1 m |
| 27 | Zylinderschraube IS M 6x30 / Cheese Head Screw / Vis A Tete Cylindrique | 7.306-024 | 4 |
| 28 | Zylinderschraube IS M 8x30 / Cheese Head Screw / Vis A Tete Cylindrique | 7.306-043 | 2 |
| 29 | Ventilgehäuse / Valve Box / Boite A Soupape | 5.587-107 | 1 |
| 30 | O-Ring 12,42x1,78 / O-Ring / Joint Torique | 6.362-480 | 1 |
| 31 | O-Ring 15,3x2,4 / O-Ring / Joint Torique | 6.362-153 | 2 |
| 32 | Hülse / Pod / Douille | 5.110-210 | 2 |
| 33 | O-Ring 14x2 / O-Ring / Joint Torique | 6.362-481 | 6 |
| 34 | Ventil Komplett / Valve Complete / Soupape Complete | 4.580-117 | 6 |
| 35 | Zylinderschraube M 10x100 / Cheese Head Screw / Vis A Tete Cylindrique | 7.306-066 | 4 |
| 36 | Sprengnng A 6 / Sealing Ring / Circlip | 6.343-143 | 1 |
| 37 | Hülse / Pod / Douille | 5.110-367 | 1 |
| 38 | Schraubfeder / Coil Spring / Ressort A Boudin | 5.332-110 | 1 |
| 39 | O-Ring Komplett / O-Ring Complete / Joint Torique Complete | 6.362-477 | 1 |
| 40 | O-Ring Komplett / O-Ring Complete / Joint Torique Complete | 6.362-602 | 1 |
| 41 | O-Ring 4x1 / O-Ring / Joint Torique | 6.362-452 | 1 |
| 42 | Spindel / Spindle / Pivot | 4.291-005 | 1 |

Gruppe 2: Pumpensatz
Group 2: Pump Unit
Groupe 2: Moto-pompe

HDS 750

ab Werk-Nr. 16627 / from serial No. 16627 / à partir du numero de fabrication N. 16627



Gruppe 2: Pumpensatz
Group 2: Pump Unit
Groupe 2: Moto-pompe

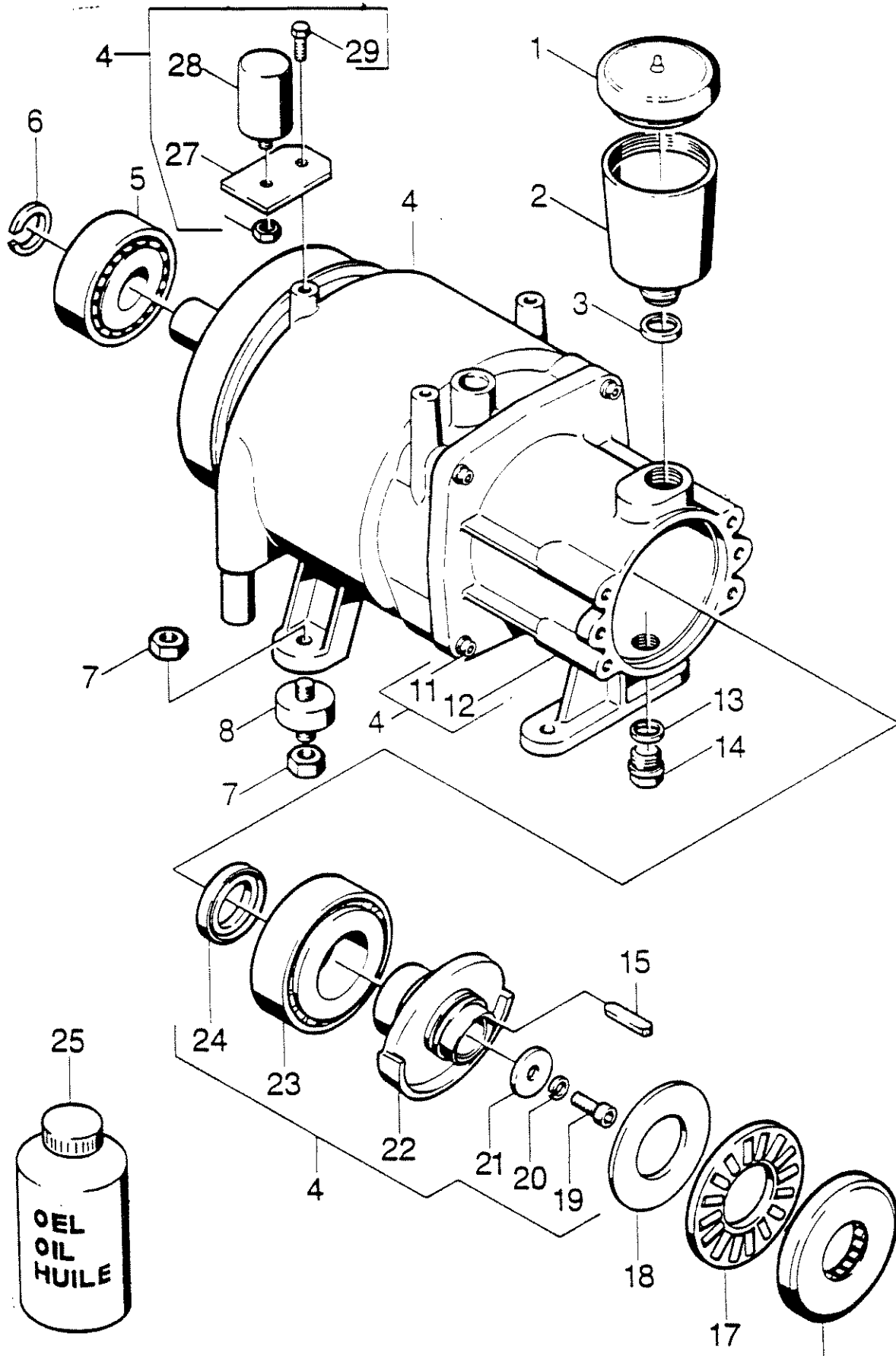
HDS 750

ab Werk-Nr. 16627 / from serial No. 16627 / à partir numero de fabrication N. 16627

| Pos. Ref. Pos. | Benennung Description Désignation | Teil-Nr. Part No. Référence | St. im Gerät Quant. p. gr. Nbr. |
|----------------------|---|-----------------------------------|---------------------------------------|
| 43 | Linseenschraube M 4x6 / Oval Head Screw / Vis A Tete Bombée | 7.306-323 | 1 |
| 44 | O-Ring 11x1,3 / O-Ring / Joint Torque | 6.362-402 | 1 |
| 45 | Griff / Handle / Poignée | 5.321-263 | 1 |
| 46 | Hülse / Pod / Douille | 5.110-368 | 1 |
| 47 | Schlauchstück / Flexible Tube Piece / Piece de Tuyau | 5.442-503 | 1 |
| 48 | O-Ring / O-Ring / Joint Torque | 6.362-483 | 3 |
| 49 | Ventilschraube / Valve Screw / Vis de Soupape | 5.583-060 | 2 |
| 51 | O-Ring / O-Ring / Joint Torque | 6.362-482 | 2 |
| 52 | Ventilsitz / Valve Seat / Siege de Soupape | 5.581-093 | 1 |
| 53 | Sicherheitsventil / Safety Valve / Soupape de Surete | 6.412-684 | 1 |
| 55 | Ventilschraube / Valve Screw / Vis de Soupape | 5.583-062 | 1 |
| 56 | Dichttring A 10x13,5 / Joint Ring / Anneau D'etancherte | 7.362-003 | 2 |
| 57 | HD-Schlauch 5/260 / Hp-Hose / Tuyau Souple A Hp | 6.388-843 | 1 |
| 58 | Hohlschraube M 10x1 / Banjo Bolt / Boulon Creux | 7.386-363 | 1 |
| 59 | Pumpenset siehe Seite 11 (Bildtafel H 16) / Pump set see Page 11 (Board H 16) / Jeu de pieces de rechange de pompe voir Page 11 (Tableau H 16) | 2.880-283 | 1 |

Gruppe 3: Motor
Group 3: Motor
Groupe 3: Moteur

HDS 750



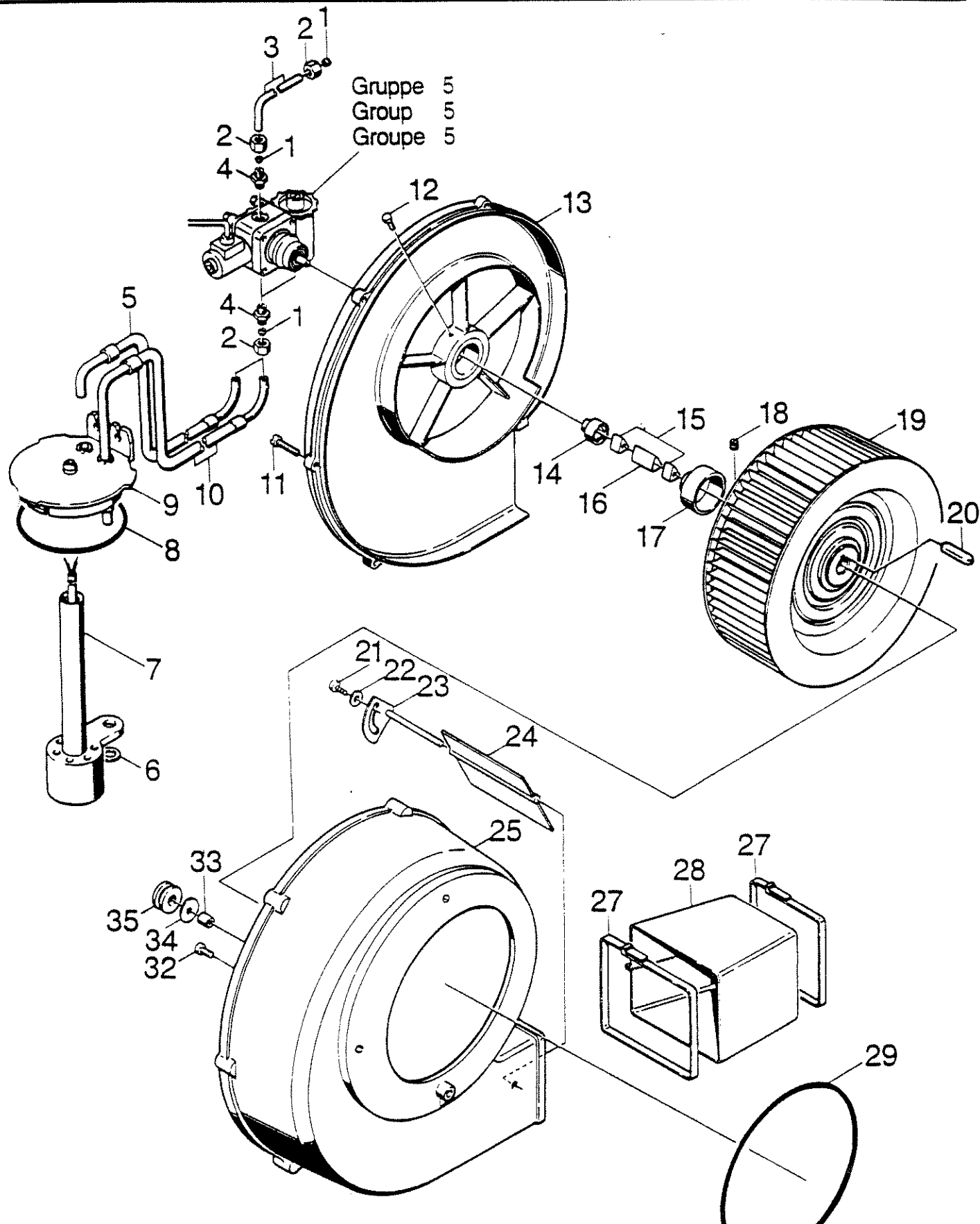
Gruppe 3: Motor
 Group 3: Motor
 Groupe 3: Moteur

HDS 750

| Pos. Ref. Pos. | Benennung Description Désignation | Teil-Nr. Part No. Référence | St. im Gerät Quant. p. gr. Nbr. |
|----------------------|---|-----------------------------------|---------------------------------------|
| 1 | Deckel / Cover / Couvercle | 5.063-189 | 1 |
| 2 | Behälter / Receptacle / Recipient | 5.070-048 | 1 |
| 3 | Dichtung / Joint Ring / Anneau D'étanchéité | 5.363-100 | 1 |
| 4 | Motor 220 V / Motor / Moteur | 6.612 092 | 1 |
| 5 | Kugellager 6305-2z / Ball Bearing / Roulement A Billes | 7.401-148 | 1 |
| 6 | Sprengung A 25x1.2 / Sealing Ring / Circlip | 7.343-008 | 1 |
| 7 | 6-Kant-Mutter M 8 / Hexagon Nut / Ecrou Hexagonal | 7.311-510 | 8 |
| 8 | Gummipuffer M 8 / Rubber Buffer / Butoir En Caoutchouc | 6.339-060 | 4 |
| 11 | Zylinderschraube IS M 6x30 / Cheese Head Screw / Vis A Tete Cylindrique | 7.306-024 | 3 |
| 12 | Gehäuse / Housing / Boitier | 5.060-181 | 1 |
| 13 | Dichtung A 18x22 / Joint Ring / Anneau D'étanchéité | 7.362-009 | 1 |
| 14 | Vs.-Schraube M 18x1.5 / Screw Plug / Vis de Fermeture | 7.382-235 | 1 |
| 15 | Passfeder A 8x7x40 / Feather Key / Ressort D'ajustage | 7.318-038 | 1 |
| 16 | Druckscheibe / Pressure Disk / Disque de Pression | 6.401-124 | 1 |
| 17 | Axial-Rollenkäfig / Roller Thrust Cage / Butee A Rouleaux | 6.401-123 | 1 |
| 18 | Laufscheibe / Rotor Disk / Disque de Butee | 6.401-122 | 1 |
| 19 | Zylinderschraube IS M 8x20 / Cheese Head Screw / Vis A Tete Cylindrique | 7.308-041 | 3 |
| 20 | Federring 8 / Spring Washer / Rondelle Grower | 7.313-051 | 1 |
| 21 | Scheibe R 9 / Disk / Disque | 7.312-261 | 1 |
| 22 | Taumscheibe Komplett / Swash Plate / Disque En Nutation | 4.120-103 | 1 |
| 23 | Kugelrollenlager 41 / Taper Roller Beann / Palier Con. a Roul. | 6.401-113 | 1 |
| 24 | Dichtung A 35x52 / Rotary Shaft Seal / Bague A Levres Res. | 7.367-009 | 1 |
| 25 | Motorenöl 1 L / Engine Oil / Huile A Moteurs | 6.288-050 | 1 |
| 27 | Halter / Support / Appui | 5.042-267 | 1 |
| 28 | Betriebskondensator 60 ml / Operating Condenser / Condensateur de Service | 6.661-084 | 1 |
| 29 | 6-Kant-Schraube M 8x16 / Hex. Head Cap Screw / Boulon A Six Pans | 7.304-395 | 1 |

Gruppe 4: Gebläse
oup 4: Blower
Groupe 4: Ensemble mécanique

HDS 750



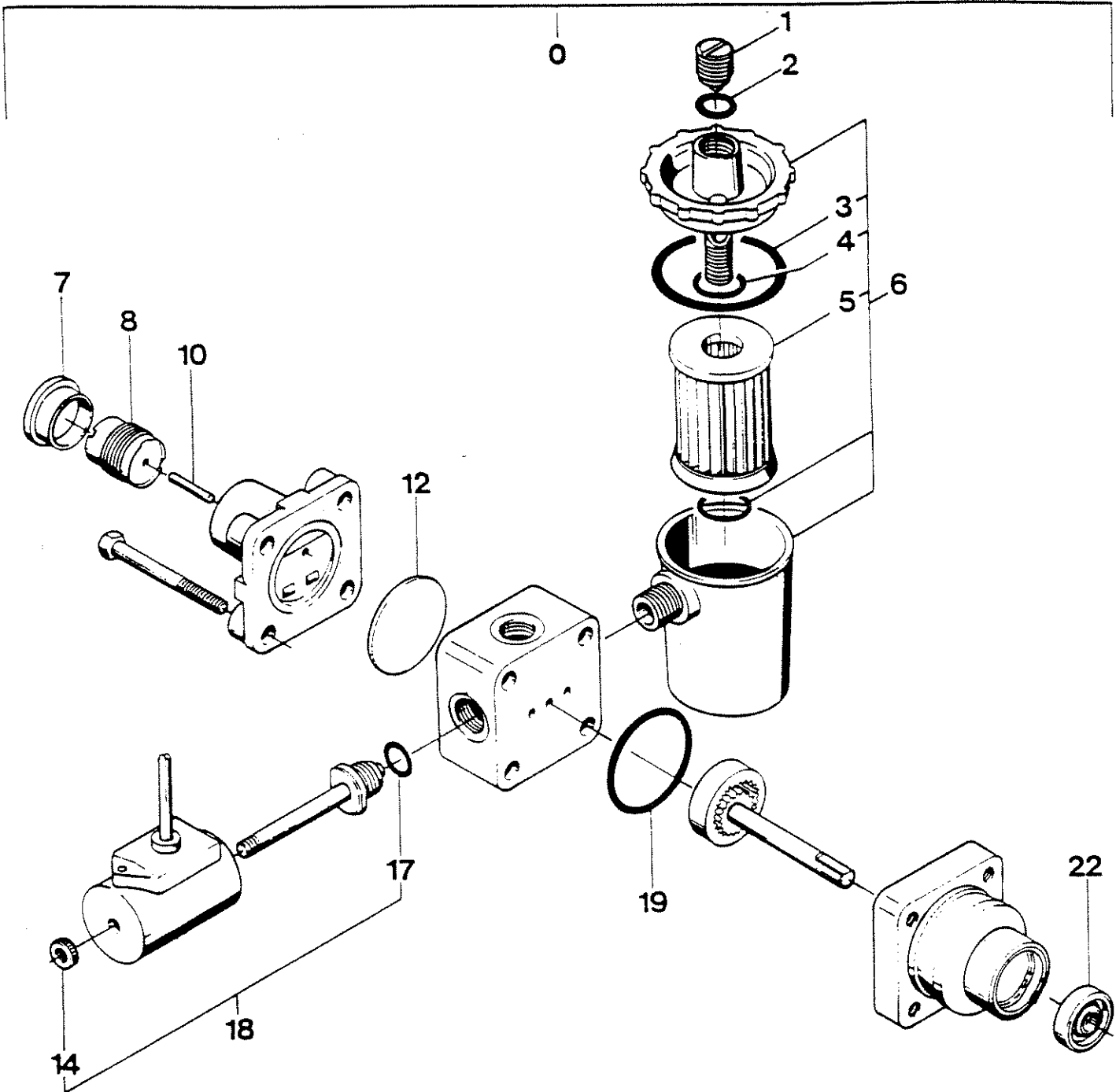
Gruppe 4: Gebläse
 Group 4: Blower
 Groupe 4: Ensemble mécanique

HDS 750

| Pos. Ref. Pos. | Benennung Description Désignation | Teil-Nr. Part No. Référence | St. im Gerät Quant. p. gr. Nbr. |
|----------------------|---|-----------------------------------|---------------------------------------|
| 1 | Schneidring / Olive / Bague coupante | 6.388-160 | 4 |
| 2 | Überwurfmutter / Cap nut / Ecrou raccord | 6.388-159 | 4 |
| 3 | Leitungsrohr / Pipe / Tube | 5.423-013 | 1 |
| 4 | Schraubstutzen R 1/8" / Screw union pipe thread / Raccord filete | 6.388-181 | 3 |
| 5 | Schlauch NW 4 / Hose / Flixible | 6.388-333 | 1 |
| 6 | Scheibe / Washer / Rondelle | 6.343-119 | 1 |
| 7 | Niveaufühler / Level switch / Contacteur de niveau | 6.631-439 | 1 |
| 8 | O-Ring 68x4 / O-ring / Joint torique | 6.362-474 | 1 |
| 9 | Formteil / Moulding / Pièce profilée | 5.030-434 | 1 |
| 10 | Schlauch NW 4 / Hose, nom. dia. 4 / Flixible DN 4 | 6.388-334 | 1 |
| 11 | Zylinderschraube BZ 4,8x25 Z 1 / Cheese head screw / Vis à tête cylindrique | 7.309-022 | 7 |
| 12 | Zylinderschraube IS M 6x16 / Socket head screw / Vis à tête cylindrique | 7.306-020 | 4 |
| 13 | Deckel / Cover / Couvercle | 5.063-206 | 1 |
| 14 | Kupplungsteil / Coupling element / Élément d'accouplement | 6.463-008 | 1 |
| 15 | Kupplungsteil / Coupling element / Élément d'accouplement | 6.463-020 | 2 |
| 16 | Kupplungsteil / Coupling element / Élément d'accouplement | 5.471-050 | 1 |
| 17 | Kupplungsteil / Coupling element / Élément d'accouplement | 5.471-049 | 1 |
| 18 | Gewindestift M 8x6 / Grub screw / Goujon fileté | 7.307-407 | 1 |
| 19 | Gebläserad / Fanwheel / Roue de turbine | 6.484-017 | 1 |
| 20 | Passfeder / Feather key / Ressort d'ajustage | 7.318-002 | 1 |
| 21 | LSK-Blechschrabe 4,8x16 / Self-tapping screw / Vis à tôle à tête bombée fraisée | 7.303-362 | 1 |
| 22 | Scheibe A 5.3 / Washer / Rondelle | 7.312-278 | 1 |
| 23 | Klappenwelle / Flap shaft / Arbre de volet | 5.603-012 | 1 |
| 24 | Luftklappe / Air flap / Volet d'admission d'air | 5.606-001 | 1 |
| 25 | Gehäuse / Housing / Boîtier | 5.605-073 | 1 |
| 27 | Spannband / Clamp strap / Collier de serrage | 6.388-608 | 2 |
| 28 | Tuchmanschette / Cloth collar / Soufflet en tissu | 5.178-016 | 1 |
| 29 | O-Ring 143x2 / O-ring / Joint torique | 6.362-456 | 1 |
| 32 | Zylinderschraube IS M 6x25 / Socket head screw / Vis à tête cylindrique | 7.304-386 | 4 |
| 33 | Hülse / Sleeve / Douille | 5.110-222 | 4 |
| 34 | Scheibe / Washer / Rondelle | 5.115-233 | 4 |
| 35 | Gumming / Rubber ring / Bague en caoutchouc | 5.379-008 | 4 |

Gruppe 5: Brennstoffpumpe
Group 5: Fuel Pump
Groupe 5: Pompe à combustible

HDS 750



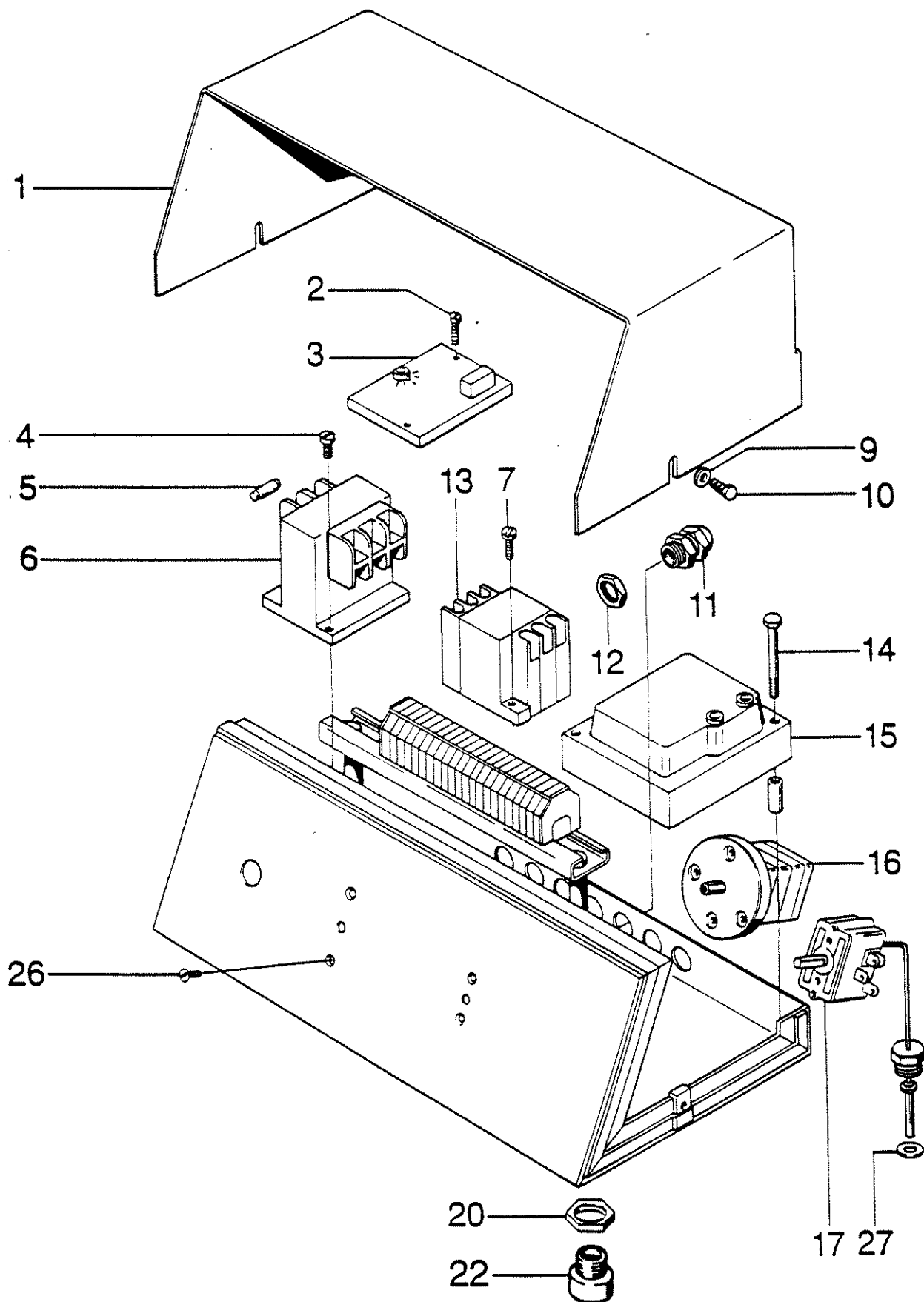
Gruppe 5: Brennstoffpumpe
Group 5: Fuel Pump
Groupe 5: Pompe à combustible

HDS 750

| Pos. | Benennung | Teil-Nr. | St. im Gerät |
|------|---|-----------|---------------|
| Ref. | Description | Part No. | Quant. p. gr. |
| Pos. | Désignation | Référence | Nbr. |
| 0 | Brennstoffpumpe mit Magnetventil / Fuel pump with solenoid valve / Pompe à combustible avec electrovanne | 6.472-344 | 1 |
| 1 | Entlüftungsventil / Vent valve / Purgeur | 6.472-107 | 1 |
| 2 | O-Ring / O-ring / Joint tonque | 6.472-106 | 1 |
| 3 | O-Ring / O-ring / Joint tonque | 6.472-111 | 1 |
| 4 | O-Ring / O-ring / Joint tonque | 6.472-112 | 1 |
| 5 | Filtereinsatz / Filter element / Cartouche de filtre | 6.472-113 | 1 |
| 6 | Filtergehäuse komplett / Filter housing, complete / Boitier de filtre complet | 6.472-123 | 1 |
| 7 | Schutzkappe / Dust cap / Capuchon de protection | 6.472-122 | 1 |
| 8 | Federgehäuse / Spring housing / Boitier de ressort | 6.472-109 | 1 |
| 10 | Stift / Pin / Pointeau | 6.472-108 | 1 |
| 12 | Membrane / Diaphragm / Membrane | 6.472-128 | 1 |
| 14 | Rändelmutter / Knurled nut / Ecrou moleté | 6.472-340 | 1 |
| 17 | O-Ring / O-ring / Joint tonque | 6.472-125 | 1 |
| 18 | Magnetventil komplett / Solenoid valve, complete / Electrovanne complet | 6.472-345 | 1 |
| 19 | O-Ring / O-ring / Joint tonque | 6.472-120 | 1 |
| 22 | Achsendichtung / Shaft seal / Etoupage d'arbre | 6.472-105 | 1 |

Gruppe 6: Elektrogeräteschrank
Group 6: Electrical Cabinet
Groupe 6: Coffret électrique

HDS 750



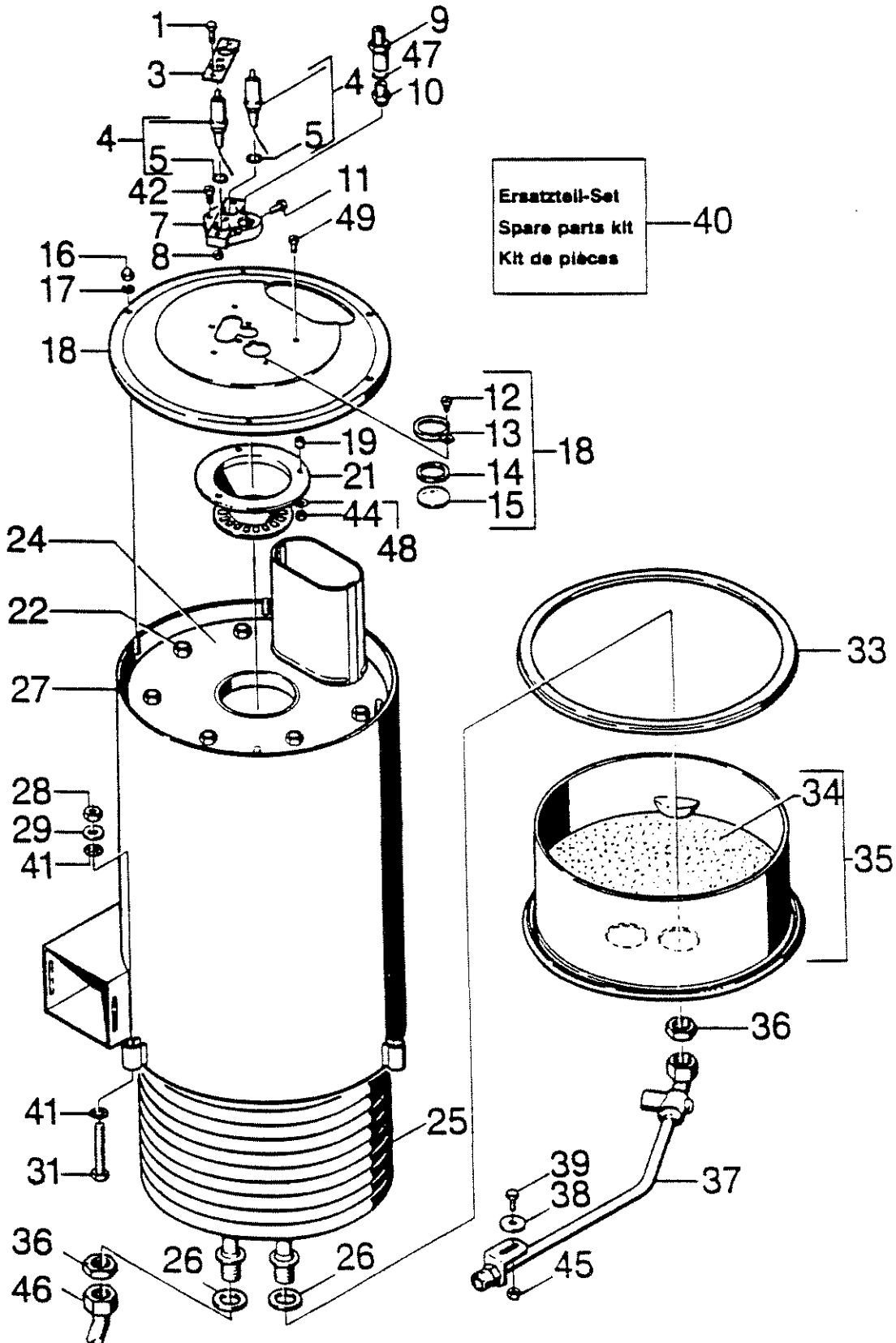
Gruppe 6: Elektrogeräteschrank
 Group 6: Electrical Cabinet
 Groupe 6: Coffret électrique

HDS 750

| Pos. | Benennung Ref. Description Pos. Désignation | Teil-Nr. Part No. Référence | St. im Gerät Quant. p. gr. Nbr. |
|------|--|-----------------------------------|---------------------------------------|
| 1 | Haube / Cover / Couverture | 5.066-122 | 1 |
| 2 | Schraube M 3x16 / Screw M 3x16 / Vis M 3x16 | 6.303-014 | 2 |
| 3 | Impulsgeber / Impulse transmitter / Relais d'impulsion | 6.633-090 | 1 |
| 4 | Schraube M 4x8 / Screw M 4x8 / Vis M 4x8 | 6.303-017 | 2 |
| 5 | G-Schmelzeinsatz 2 A / Fuse 2 A / Fusible 2 A | 6.644-052 | 1 |
| 6 | Steuertrafo / Control transformer / Transto de commande | 6.622-127 | 1 |
| 7 | Schraube M 4x16 / Screw M 4x16 / Vis M 4x16 | 6.303-015 | 2 |
| 8 | Scheibe A 4.3 / Washer A 4.3 / Rondelle A 4.3 | 7.312-001 | 2 |
| 9 | Scheibe A 5.3 / Washer A 5.3 / Rondelle A 5.3 | 7.312-278 | 2 |
| 10 | 6-Kant-Blechschrabe 4.8x16 / Hex. hd. self-tapping screw 4.8x16 / Vis à tête à 6 pans 4.8x16 | 7.303-121 | 2 |
| 11 | Kabelverschraubung Pg 9 / Cable gland Pg 9 / Entree de câble Pg 9 | 6.641-355 | 8 |
| 12 | Gegenmutter Pg 9 / Locknut Pg 9 / Contre-ecrou Pg 9 | 6.641-366 | 8 |
| 13 | Schütz 24 V / Contactor 24 V / Disjoncteur 24 V | 6.632-132 | 1 |
| 14 | Schraube M 5x8 / Screw M 5x8 / Vis M 5x8 | 6.303-004 | 2 |
| 15 | Zündtrafo / Ignition transformer / Transto d'allumage | 6.622-076 | 1 |
| 16 | Schalter / Switch / Contacteur | 6.631-197 | 1 |
| 17 | Temperaturregler / Temperature control / Régulateur de température | 6.685-375 | 1 |
| 20 | Gegenmutter Pg 13,5 / Locknut Pg 13.5 / Contre-ecrou Pg 13.5 | 6.641-369 | 2 |
| 21 | Kabelverschraubung Pg 13,5 / Cable gland Pg 13.5 / Entree de câble Pg 13.5 | 6.641-356 | 2 |
| 22 | Erweiterung Pg 16/13,5 / Enlarging piece Pg 16/13.5 / Piece de élargissement Pg 16/13.5 | 6.641-394 | 2 |
| 26 | Senkschraube M 4x8 / Countersunk screw M 4x8 / Vis à tête fraisée M 4x8 | 7.305-021 | 4 |
| 27 | Scheibe / Washer / Rondelle | 5.115-375 | 1 |

Gruppe 7: Durchlauferhitzer
Group 7: Continuous Flow Boiler
Groupe 7: Chaudière à circulation forcée

HDS 750



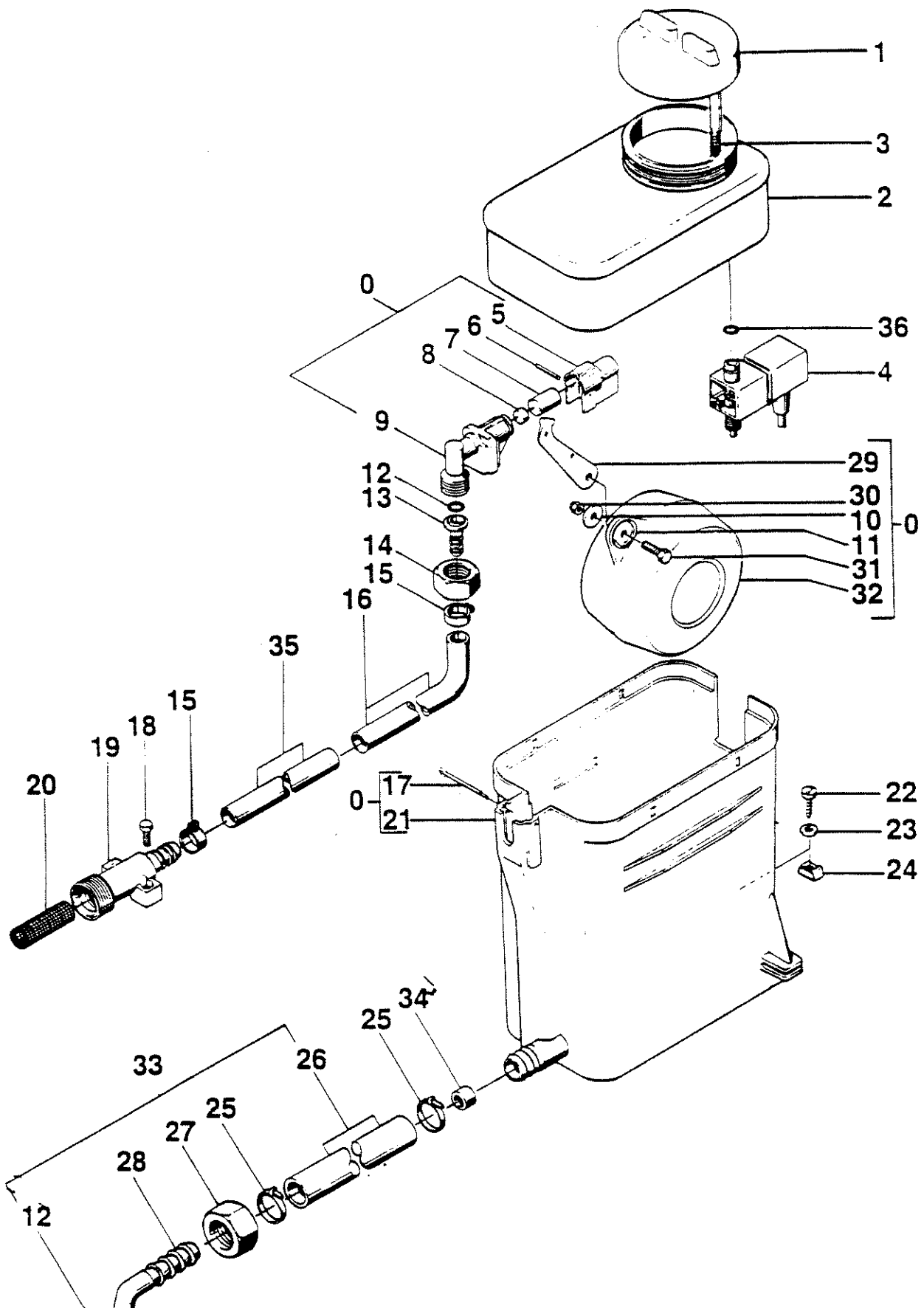
Gruppe 7: Durchlauferhitzer
 Group 7: Continuous Flow Boiler
 Groupe 7: Chaudière à circulation forcée

HDS 750

| Pos. Ref. Pos. | Benennung Description Designation | Teil-Nr. Part No. Référence | St. im Gerät Quant. p. gr. Nbr. |
|----------------------|---|-----------------------------------|---------------------------------------|
| 1 | 6-Kant-Schraube M 5x16 / Hex. hd. screw / Vis à 6 pans | 7.309-017 | 3 |
| 3 | Lascne / Strap / Bnde | 5.004-228 | 1 |
| 4 | Zündelektrode (2 Stück) / Ignition electrode / Electrodes | 2.880-177 | 1 |
| 5 | Dichtring C 12x15,5 / Sealing ring / Bague d'étanchéité | 7.362-004 | 2 |
| 7 | Kerzenhalter / Electrode holder / Porte-bougie | 5.668-001 | 1 |
| 8 | 6-Kant-Mutter M 5 / Hex. nut / Ecrou à 6 pans | 7.311-037 | 3 |
| 9 | Düsenhalter / Nozzle holder / Porte-gicleur | 5.667-021 | 1 |
| 10 | Düse 1.5 gpH / Nozzle 1.5 / Gicleur | 6.415-040 | 1 |
| 11 | 6-Kant-Schraube M 5x12 / Hex. nut hd. screw / Ecrou à 6 pans | 7.304-371 | |
| 12 | Zylinder-Blechschrabe 3.5x6,5 / Self-tapping screw / Vis à tôle à tête cylindrique | 7.303-012 | 1 |
| 13 | Blech / Plate / Tôle | 5.000-590 | 1 |
| 14 | Flachdichtung / Gasket / Joint plat | 5.364-100 | 1 |
| 15 | Glasscheibe / Sight glass / Verre de regard | 6.278-014 | 1 |
| 16 | Hutmutter M 6 / Cap nut / Ecrou Chapeau | 7.311-380 | 3 |
| 17 | Zahnscheibe A 6,4 / Shakeproof washer / Rondelle eventail | 7.312-167 | 2 |
| 18 | Erhitzerdeckel mit Schauglas / Boiler cover with sight glass / Couvercle de chaudière avec verre de regard | 4.654-091 | 1 |
| 19 | Hülse / Sleeve / Douille | 7.311-003 | 3 |
| 21 | Brennereinsatz / Burner insert / Brûleur | 4.663-060 | 1 |
| 22 | 6-Kant-Mutter M 6 / Hex. nut / Ecrou à 6 pans | 7.311-039 | 4 |
| 24 | Brennereinsatz / Burner funnel / Brûleur | 4.663-057 | 1 |
| 25 | Heizschlange / Heater coil / Serpentin de chauffage | 4.680-062 | 1 |
| 26 | Profildichtung / Profile gasket / Joint profilé | 5.365-068 | 1 |
| 27 | Außenmantel / Outer jacket / Enveloppe exteneure | 4.652-055 | 1 |
| 28 | Selbstsicherungsmutter M 10 / Self-locking nut / Ecrou auto-freine | 7.311-511 | 3 |
| 29 | Scheibe B 10,5 / Washer / Rondelle | 7.312-005 | 3 |
| 31 | 6-Kant-Schraube M 10x6,5 / Hex. hd. screw / Vis à 6 pans | 7.304-422 | 3 |
| 32 | Zarge / Frame / Tôle | 5.012-202 | 1 |
| 33 | Profildichtung / Profile gasket / Joint profilé | 6.366-009 | 1 |
| 34 | Stampfmasse 1 kg / Refractory / Ciment | 6.286-016 | 8 |
| 35 | Erhitzerboden komplett / Boiler base. complete / Fond de chaudière complet | 4.655-036 | 1 |
| 36 | Fl.-6-Kant-Mutter / Flat hex. nut / Ecrou plat à 6 pans | 7.311-155 | 2 |
| 37 | Rohrleitung / Pipe / Tube | 4.420-910 | 1 |
| 38 | Untertage / Base / Cale | 5.378-058 | 1 |
| 39 | 6-Kant-Schraube M 6x16 / Hex. hd. screw / Vis à 6 pans | 7.304-383 | 2 |
| 40 | Ersatzteil-Set siehe Seite 32 (Bildtafel L 16) / Spare parts kit see page 32 (Board L 16) / Kit de pieces voir page 32 (Tableau L 16) | 2.880-266 | 1 |
| 41 | Zahnscheibe A 10,5 / Shakeproof washer / Rondelle eventail | 7.312-160 | 2 |
| 42 | 6-Kant-Schraube M 5x16 / Hex. nut hd. screw / Ecrou à 6 pans | 7.306-441 | 6 |
| 44 | Mutter M 5 / Nut / Ecrou | 7.311-002 | 3 |
| 45 | Mutter / Nut / Ecrou | 7.311-003 | 1 |
| 46 | Rohrleitung / Tube / Conduite | 4.421-079 | 1 |
| 47 | Dichtring / Ring / Anneau | 7.362-005 | 1 |
| 48 | Zahnscheibe A 5,3 / Disk / Disque | 7.312-172 | 3 |
| 49 | Schraube M 5x12 / Screw / Vis | 7.306-443 | 3 |

Gruppe 8: Schwimmerventil
Group 8: Float Valve
Groupe 8: Bac à flotteur

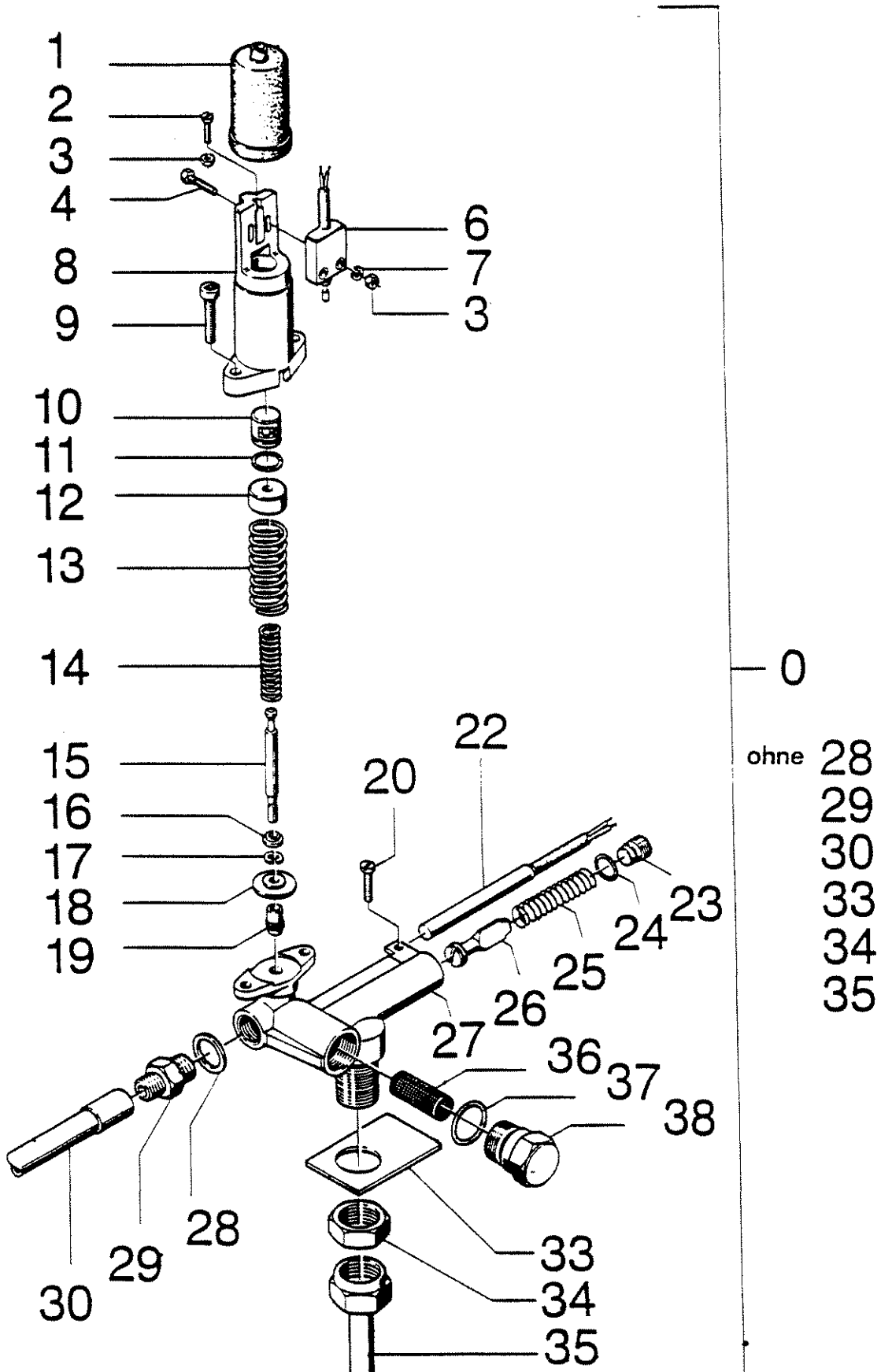
HDS 750



Gruppe 8: Schwimmerventil
 Group 8: Float Valve
 Groupe 8: Bac à flotteur

HDS 750

| Pos. Ref. Pos. | Benennung Description Désignation | Teil-Nr. Part No. Référence | St. im Gerät Quant. p. gr. Nbr. |
|----------------------|--|-----------------------------------|---------------------------------------|
| 0 | Schwimmerventil / Float valve / Vanne à flotteur | 3.593-054 | 1 |
| 1 | Deckel DGT / Cover, scale inhibitor / Couvercle DGT | 5.063-226 | 1 |
| 2 | Behälter / Tank / Réservoir | 4.070-094 | 1 |
| 3 | Schraubfeder / Coil spring / Ressort helicoïdal | 5.332-001 | 1 |
| 4 | Magnetventil / Solenoid valve / Electrovanne | 6.685-210 | 1 |
| 5 | Schutzteil / Protector / Protection | 5.394-066 | 1 |
| 6 | Bolzen 3x25 / Pin / Axe | 7.316-004 | 1 |
| 7 | Ventilbolzen / Valve pin / Pousoir de vanne | 5.584-026 | 1 |
| 8 | Flachdichtung / Gasket / Joint plat | 5.364-095 | 1 |
| 9 | Ventilgehäuse / Valve housing / Boîtier de vanne | 5.587-103 | 1 |
| 10 | Scheibe A 6.4 / Washer / Rondelle | 7.312-279 | 1 |
| 11 | Scheibe / Washer / Rondelle | 5.115-158 | 1 |
| 12 | O-Ring 13.3x2.4 / O-ring / Joint tonque | 6.362-078 | 2 |
| 13 | Schlauchnippel / Hose nipple / Raccord de flexible | 5.443-224 | 1 |
| 14 | Mutter R 3/4" / Nut, pipe thread / Ecrou | 5.310-061 | 1 |
| 15 | Schlauchschele 16-25 / Hose clamp / Collier | 6.388-547 | 2 |
| 16 | Schlauchstück / Hose / Flexible | 5.442-507 | 1 |
| 17 | Splint 4x50 / Split pin / Goupille fendue | 7.316-432 | 1 |
| 18 | 6-Kant-Schraube M 6 x 16 / Hex. hd. screw / Vis à 6 pans | 7.304-383 | 1 |
| 19 | Knotenstück / Union / Distributeur | 5.427-087 | 1 |
| 20 | Sieb / Strainer / Crépine | 6.414-141 | 1 |
| 21 | Behälter / Tank / Bac | 5.070-064 | 1 |
| 22 | Blechschraube 4.8x25 / Self-tapping screw / Vis à tôle | 7.303-364 | 2 |
| 23 | Scheibe A 5.3 / Washer / Rondelle | 7.312-278 | 2 |
| 24 | Schnappmutter 4.8 / Snap nut / Clip-ecrou | 6.310-028 | 2 |
| 25 | Kabelband / Cable tie / Collier pour flexible | 6.641-474 | 2 |
| 26 | Schlauch / Hose / Flexible | 6.388-721 | 1 |
| 27 | Mutter / Nut / Ecrou | 5.310-062 | 1 |
| 28 | Schlauchnippel / Hose nipple / Raccord de flexible | 5.443-211 | 1 |
| 29 | Hebel / Lever / Levier | 5.481-029 | 1 |
| 30 | 6-Kt.-Mutter M 6 / Hex. nut / Ecrou à 6 pans | 7.311-422 | 1 |
| 31 | 6-Kt.-Schraube M 6 x 20 / Hex. hd. screw / Vis à 6 pans | 7.304-471 | 1 |
| 32 | Schwimmer / Float / Flotteur | 5.585-004 | 1 |
| 33 | Schlauch komplett / Hose assy. / Flexible complet | 4.440-267 | 1 |
| 34 | Buchse / Bush / Douille | 5.112-189 | 1 |
| 35 | Schlauchstück / Hose / Flexible | 5.442-506 | 1 |
| 36 | O-Ring / O-ring / Joint tonque | 6.362-113 | 1 |



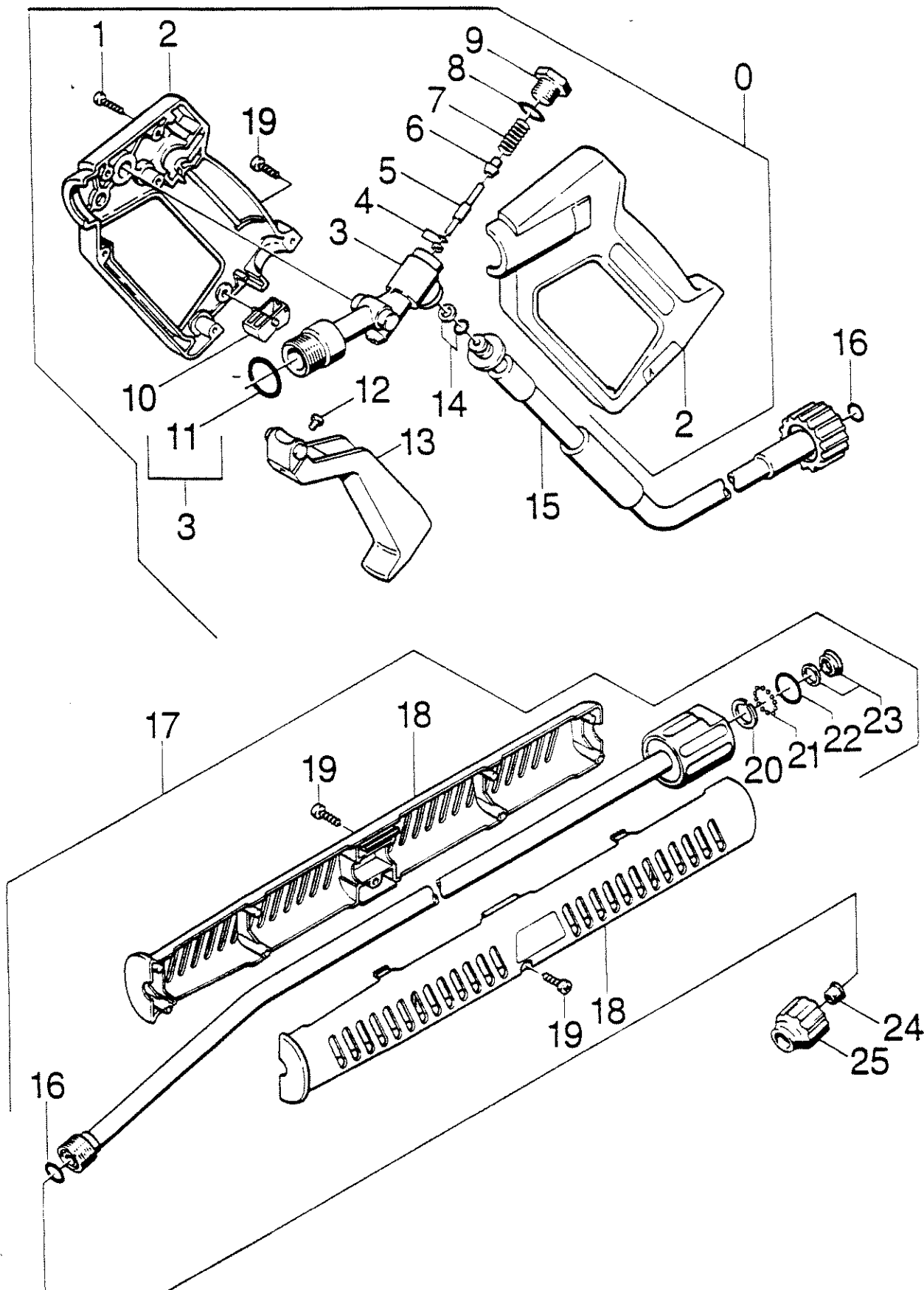
Gruppe 9: Sicherheitsblock
 Group 9: Safety System
 Groupe 9: Bloc de sécurité

HDS 750

| Pos. Ref. Pos. | Benennung Description Designation | Teil-Nr. Part No. Référence | St. im Gerät Quant. p. gr. Nbr. |
|----------------------|---|-----------------------------------|---------------------------------------|
| 0 | Sicherheitsblock / Safety block / Bloc de sécurité | 4.749-043 | 1 |
| 1 | Schutzteil / Protector / Protection | 5.394-060 | 1 |
| 2 | Zylinderschraube M 3 x 16 / Cheese head screw / Vis à tête cylindrique | 7.308-406 | 1 |
| 3 | 6-Kant-Mutter M 3 / Hex. nut / Ecrou à 6 pans | 7.311-000 | 3 |
| 4 | 6-Kant-Schraube M 3 x 20 / Hex. hd. screw / Vis à 6 pans | 7.304-352 | 2 |
| 6 | Schalter / Microswitch / Microrupteur | 6.631-125 | 1 |
| 7 | Federung B 3 / Spring washer / Rondelle Grower | 7.313-000 | 2 |
| 8 | Gehäuse / Housing / Boîtier | 5.060-099 | 1 |
| 9 | Zylinderschraube IS M 6 x 30 / Socket head screw / Vis à tête cylindrique | 7.306-024 | 2 |
| 10 | Kolben / Piston / Piston | 5.553-046 | 1 |
| 11 | O-Ring 12.0 x 12.0 / O-ring / Joint torique | 6.362-169 | 1 |
| 12 | Buchse / Bush / Douille | 5.112-110 | 1 |
| 13 | Schraubenfeder / Coil spring / Ressort hélicoïdal | 5.332-069 | 1 |
| 14 | Schraubenfeder / Coil spring / Ressort hélicoïdal | 5.332-070 | 1 |
| 15 | Stange / Rod / Tige | 5.107-023 | 1 |
| 16 | Buchse / Bush / Douille | 5.112-094 | 1 |
| 17 | Sicherungsscheibe / Retaining disc / Circlip | 7.343-203 | 1 |
| 18 | Scheibe / Washer / Rondelle | 5.115-147 | 1 |
| 19 | Kolben komplett / Piston assy. / Piston complet | 4.553-025 | 1 |
| 20 | Zylinderschraube JS M 6 x 16 / Cheese head screw / Vis à tête cylindrique | 7.306-020 | 1 |
| 22 | Reedschalter / Reed switch / Contacteur à languette | 2.880-194 | 1 |
| 23 | Formschraube / Special screw / Vis profilée | 5.305-162 | 1 |
| 24 | O-Ring 10.0 x 1.5 / O-ring / Joint torique | 6.362-482 | 1 |
| 25 | Schraubenfeder / Coil spring / Ressort hélicoïdal | 5.332-057 | 1 |
| 26 | Kolben / Plunger / Piston | 4.553-023 | 1 |
| 27 | Gehäuse / Housing / Boîtier | 5.605-131 | 1 |
| 28 | Dichtung A 18 x 22 / Sealing ring / Bague d'étanchéité | 7.362-009 | 1 |
| 29 | Doppelstutzen 10 / Double union / Double raccord | 7.386-476 | 1 |
| 30 | HD-Schlauch NW 8 / HP hose / Flexible HP | 6.388-859 | 1 |
| 33 | Halter / Bracket / Fixation | 5.042-261 | 1 |
| 34 | 6-Kant-Mutter M 22 x 1.5 / Hex. nut / Ecrou à 6 pans | 7.311-155 | 1 |
| 35 | Rohrleitung / Pipe / Tube | 4.420-912 | 1 |
| 36 | Sieb / Filter / Crépine | 6.414-111 | 1 |
| 37 | O-Ring 17.3 x 2.4 / O-ring / Joint torique | 6.362-160 | 1 |
| 38 | Verschlußschraube / Screw plug / Bouchon fileté | 5.411-059 | 1 |

Gruppe 10: Zubehör
Group 10: Accessories
Groupe 10: Accessoires

HDS 750



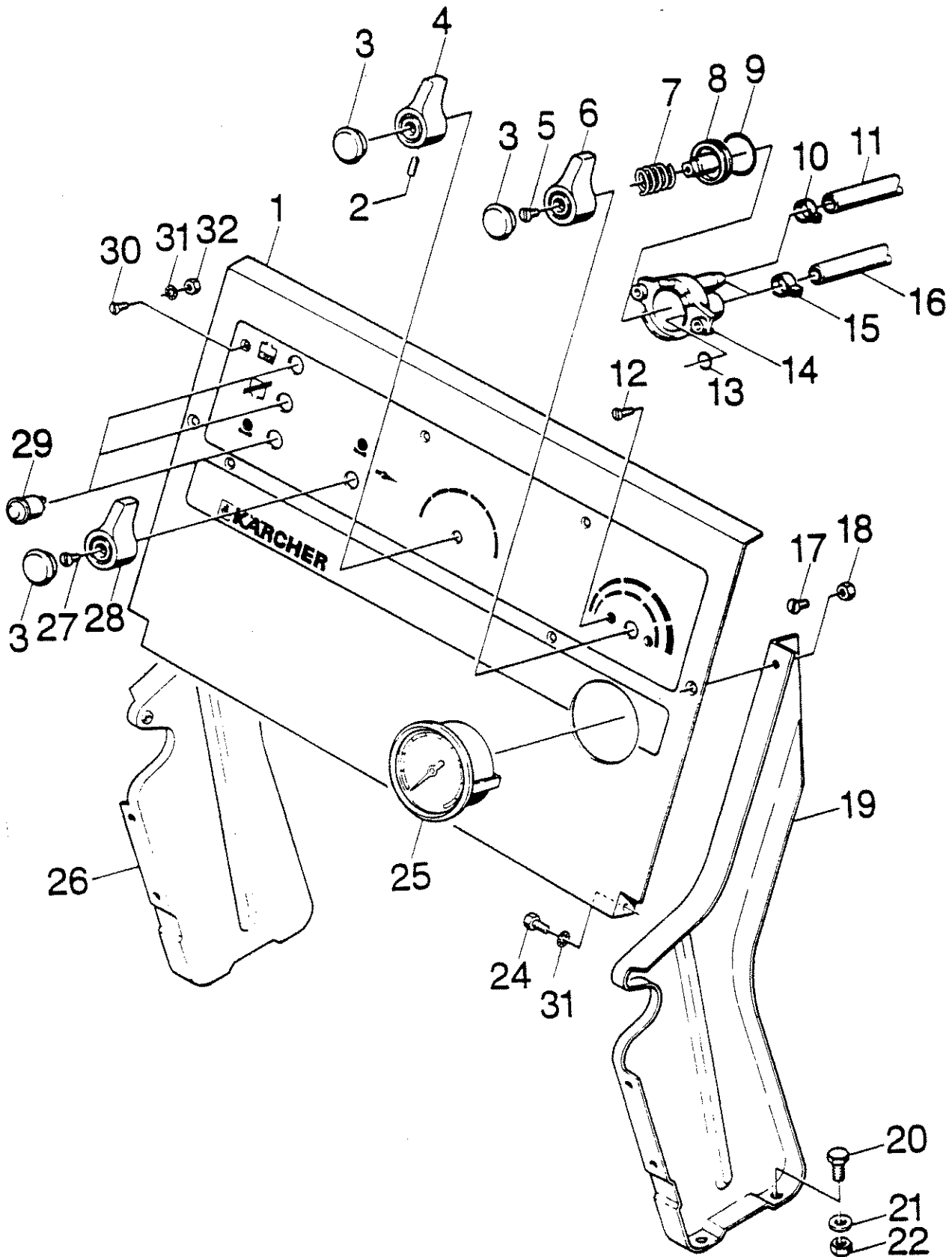
Gruppe 10: Zubehör
 Group 10: Accessories
 Groupe 10: Accessoires

HDS 750

| Pos. | Benennung | Teil-Nr. | St. im Gerät |
|------|---|-------------------------------|---------------|
| Ref. | Description | Part No. | Quant. p. gr. |
| Pos. | Désignation | Référence | Nbr. |
| 0 | Handspritzpistole / Trigger gun / Pistolet | 4.775-080 | 1 |
| 1 | Schraube 4.2x22 / Screw / Vis | 6.303-024 | 5 |
| 2 | Griff-Paar / Grip (pair) / Paire de poignées | 5.321-230 | 1 |
| 3 | Knotenstück / Strut attach. fit. / Ferrure nodale | 4.427-131 | 1 |
| 4 | O-Ring kompl. / O-ring complete / Joint tonque compl. | 6.362-571 | 1 |
| 5 | Stange / Rod / Perche | 5.107-097 | 1 |
| 6 | Ventilteller / Valve head / Tête de soupape | 5.582-084 | 1 |
| 7 | Schraubenfeder / Coil spring / Ressort à boudin | 5.332-157 | 1 |
| 8 | O-Ring 12.42x1.78 / O-ring / Joint torique | 6.362-584 | 1 |
| 9 | Verschluß-Schraube / Screw plug / Vis de fermeture | 5.411-067 | 1 |
| 10 | Hebel / Lever / Levier | 5.481-052 | 1 |
| 11 | O-Ring 17.12x2.62 / O-ring / Joint tonque | 6.362-496 | 1 |
| 12 | Zapfen / Trunnion / Tournillon | 5.108-097 | 1 |
| 13 | Hebel / Lever / Levier | 5.481-066 | 1 |
| 14 | O-Ring kompl. / O-ring complete / Joint tonque compl. | 6.362-422 | 1 |
| 15 | Hd-Schlauch Nw 6 / Hp-hose / Tuyau souple à Hp | 6.389-706 6390-057 | 1 |
| 16 | O-Ring-Set (5 Stück) / O-ring Set (5 Pieces) / Joint tonque (5 Nbr.) | 2.880-296 | 1 |
| 17 | Strahlrohr / Jet tube / Lance d'incendie | 4.760-101 | 1 |
| 18 | Griff / Handle / Poignée | 5.321-150 | 2 |
| 19 | Schraube 4.2x16 / Screw / Vis | 6.303-025 | 3 |
| 20 | Dichtung / Sealing ring / Bague d'étanchéité | 6.362-529 | 1 |
| 21 | Kugel 4d / Ball / Boule | 7.401-921 | 12 |
| 22 | O-Ring 17x1.5 / O-ring / Joint tonque | 6.362-524 | 1 |
| 23 | Nutring Kpl. 1st.-R. / Grooved ring / Joint en U à lèvres | 6.362-532 | 1 |
| 24 | Düsenmundstück 25065 / Nozzle 25065 / Buse 25065 | 6.415-327 | 1 |
| 25 | Überwurfmutter / Union nut / Ecrou-raccord | 5.401-129 | 1 |

Gruppe 11: Instrumententafel
Group 11: Control panel
Groupe 11: Tableau de commandes

HDS 750



Gruppe 11: Instrumententafel
 Group 11: Control panel
 Groupe 11: Tableau de commandes

HDS 750

| Pos. | Benennung | Teil-Nr. | St. im Gerät |
|------|--|-----------|---------------|
| Ref. | Description | Part No. | Quant. p. gr. |
| Pos. | Désignation | Référence | Nbr. |
| 1 | Instrumententafel / Control Panel / Tableau de Commande | 5.841-196 | 1 |
| 2 | Gewindestift M 5 x 10 / Headless Pin / Vis Sans Tete | 7.307-181 | 1 |
| 3 | Stopfen / Plug / Bouchon | 5.132-010 | 3 |
| 4 | Griff / Handle / Poignee | 5.321-026 | 1 |
| 5 | Senkschraube M 4 x 16 / Countersunk Screw / Vis A Tete Fraisee | 7.305-023 | 1 |
| 6 | Griff / Handle / Poignee | 5.321-023 | 1 |
| 7 | Schraubfeder / Coil Spring / Ressort A Boudin | 5.332-028 | 1 |
| 8 | Ventilsitz / Valve Seat / Siege de Soupape | 5.581-039 | 1 |
| 9 | O-Ring 26 x 2.5 / O-Ring / Joint Torque | 6.362-385 | 1 |
| 10 | Schlauchschele 13/9 / Hose Band Clip / Collier de Serrage | 6.388-550 | 1 |
| 11 | Schlauch NW 7 / Flexible Tube / Tuyau Flexible | 6.388-194 | 1m |
| 12 | Senkschraube M 4 x 10 / Sountersunk Screw / Vis A Tete Fraisee | 6.305-001 | 2 |
| 13 | O-Ring 5 x 1.5 / O-Ring / Joint Torque | 6.362-386 | 1 |
| 14 | Ventilgehäuse / Valve Box / Boite A Soupape | 5.587-054 | 1 |
| 15 | Schlauchschele / Hose Band Clip / Collier de Serrage | 6.388-559 | 2 |
| 16 | Schlauch NW 7 / Flexible Tube / Tuyau Flexible | 6.388-225 | 2m |
| 17 | Senkschraube M 5 x 10 / Countersunk Screw / Vis A Tete Fraisee | 7.305-599 | 2 |
| 18 | 6-Kant-Mutter M 5 / Hexagon Nut / Ecrou Hex. | 7.311-421 | 4 |
| 19 | Ständer Rechts / Support Right / Support A Droite | 5.052-013 | 1 |
| 20 | 6-Kant-Schraube M 8 x 16 / Hex. Head Cap Screw / Boulon A Six Pans | 7.304-395 | 8 |
| 21 | Scheibe B 8.4 / Disk / Disque | 7.312-004 | 8 |
| 22 | 6-Kant-Mutter M 8 / Hexagon Nut / Ecrou Hex. | 7.311-004 | 8 |
| 24 | 6-Kant-Schraube M 5 x 10 / Hex. Head Cap Screw / Boulon A Six Pans | 7.304-370 | 2 |
| 25 | Manometer 0-250 Bar / Manometer / Manometre | 6.421-075 | 1 |
| 26 | Ständer Links / Support Left / Support A Gauche | 5.052-012 | 1 |
| 27 | Zylinderschraube M 3.5 x 12 / Cheese Head Screw / Vis A Tete Cvindr. | 7.306-415 | 1 |
| 28 | Griff / Handle / Poignee | 5.321-021 | 1 |
| 29 | Anzeigeleuchte / Pilot Lamp / Lampe Temoin | 6.651-058 | 3 |
| 30 | Senkschraube M 4 x 10 / Countersunk Screw / Vis A Tete Fraisee | 6.305-001 | 5 |
| 31 | Zahnscheibe A 6.4 / Crown Gear / Roue Plate | 7.312-165 | 12 |
| 32 | 6-Kant-Mutter M 4 / Hexagon Nut / Ecrou Hex. | 7.311-424 | 5 |

Gruppe 2: Pumpensatz
 Group 2: Pump Unit
 Groupe 2: Moto-pompe

HDS 750

bis Werk-Nr. 16626 / up to serial No. 16626 / jusqu'au du numero de fabrication N. 16626

| Pos. Ref. Pos. | Benennung Description Désignation | Teil-Nr. Part No. Référence | St. im Gerät Quant. p. gr. Nbr. |
|----------------------|---|-----------------------------------|---------------------------------------|
| 1 | Kolben Komplett / Piston Complete / Piston Complete | 4.553-076 | 3 |
| 2 | O-Ring Komplett / O-Ring Compl. / Joint Torique Compl. | 6.362-365 | 3 |
| 3 | Keramikhülse / Ceramic Pod / Douille Ceramique | 5.110-220 | 3 |
| 4 | Dichtring / Joint Ring / Anneau D'étanchéité | 5.363-162 | 3 |
| 5 | Formschraube / Special Screw / Vis de Forme | 5.305-111 | 3 |
| 6 | Sprengnng 20 / Sealing Ring / Circlip | 6.472-331 | 3 |
| 7 | Druckspeicher 200 / Pulsation Damper / Accum. de Pression | 6.505-028 | 1 |
| 8 | Dichtring A 16x20 / Joint Ring / Anneau D'étanchéité | 7.362-007 | 1 |
| 9 | Scheibe / Disk / Disque | 5.115-289 | 3 |
| 10 | Schraubenfeder / Coil Spring / Ressort A Boudin | 5.332-150 | 3 |
| 11 | O-Ring 100x1.78 / O-Ring / Joint Torque | 6.362-448 | 1 |
| 12 | Gehäuse / Housing / Boîtier | 5.060-182 | 1 |
| 13 | Zylinderschraube IS M 8x20 / Cheese Head Screw / Vis A Tete Cylindrique | 7.306-041 | 3 |
| 14 | O-Ring 34.65x1.78 / O-Ring / Joint Torque | 6.362-484 | 3 |
| 15 | Nutring 20x28x6/8 / Grooved Ring / Joint En U A Levres | 6.365-052 | 3 |
| 16 | Scheibe / Disk / Disque | 5.115-255 | 3 |
| 17 | Nutring 20x30x8/4 / Grooved Ring / Joint En U A Levres | 6.365-053 | 3 |
| 18 | Buchse / Bush / Boite | 5.112-181 | 3 |
| 19 | Scheibe / Disk / Disque | 5.115-224 | 3 |
| 20 | Nutring / Grooved Ring / Joint En U A Levres | 6.365-061 | 3 |
| 21 | Zylinderkopf / Cylinder Head / Culasse de Cyl. | 4.550-084 | 1 |
| 22 | HD-Schlauch 8/590 / Hp-Hose / Flexible Hp | 6.388-859 | 1 |
| 23 | O-Ring 15x2 / O-Ring / Joint Torque | 6.362-427 | 1 |
| 24 | Ventil / Valve / Soupape | 4.580-114 | 1 |
| 25 | Schlauchschnelle 12/9 / Hose Band Clip / Collier de Serrage | 6.388-515 | 1 |
| 26 | Schlauch NW 7 / Flexible Tube / Tuvau Flexible | 6.388-194 | 1 m |
| 27 | Zylinderschraube IS M 6x30 / Cheese Head Screw / Vis A Tete Cylindrique | 7.306-024 | 4 |
| 28 | Zylinderschraube IS M 8x30 / Cheese Head Screw / Vis A Tete Cylindrique | 7.306-043 | 2 |
| 29 | Ventilgehäuse / Valve Box / Boite A Soupape | 5.587-107 | 1 |
| 30 | O-Ring 12.42x1.78 / O-Ring / Joint Torque | 6.362-480 | 1 |
| 31 | O-Ring 15.3x2.4 / O-Ring / Joint Torque | 6.362-153 | 2 |
| 32 | Hülse / Pod / Douille | 5.110-210 | 2 |
| 33 | O-Ring 14x2 / O-Ring / Joint Torque | 6.362-481 | 6 |
| 34 | Ventil Komplett / Valve Complete / Soupape Complete | 4.580-117 | 6 |
| 35 | Zylinderschraube M 10x100 / Cheese Head Screw / Vis A Tete Cylindrique | 7.306-066 | 4 |
| 36 | Sprengnng A 6 / Sealing Ring / Circlip | 6.343-143 | 1 |
| 37 | Hülse / Pod / Douille | 5.110-226 | 1 |
| 38 | Schraubenfeder / Coil Spring / Ressort A Boudin | 5.332-110 | 1 |
| 39 | O-Ring Komplett / O-Ring Complete / Joint Torque Complete | 6.362-477 | 1 |
| 40 | O-Ring Komplett / O-Ring Complete / Joint Torque Complete | 6.362-365 | 1 |
| 41 | O-Ring 8x1.5 / O-Ring / Joint Torque | 6.362-388 | 1 |
| 42 | Spindel / Spindle / Pivot | 5.291-023 | 1 |

Gruppe 2: Pumpensatz
 Group 2: Pump Unit
 Groupe 2: Moto-pompe

HDS 750

bis Werk-Nr. 16626 / up to serial No. 16626 / jusqu'au du numero de fabrication N. 16626

| Pos. | Benennung | Teil-Nr. | St. im Gerät |
|------|---|-----------|---------------|
| Ref. | Description | Part No. | Quant. p. gr. |
| Pos. | Désignation | Référence | Nbr. |
| 43 | Linsenschraube M 3x5 / Oval Head Screw / Vis A Tete Bombée | 7.306-317 | 1 |
| 44 | Sicherungsfeder / Retaining Spring / Ressort D'arrêt | 6.313-003 | 1 |
| 45 | Griff / Handle / Poignée | 5.321-111 | 1 |
| 46 | Stoßten / Plug / Bouchon | 5.132-010 | 1 |
| 47 | Schlauchstück / Flexible Tube Piece / Piece de Tuyau | 5.442-503 | 1 |
| 48 | O-Ring / O-Ring / Joint Tonque | 6.362-483 | 3 |
| 49 | Ventilschraube / Valve Screw / Vis de Soupape | 5.583-060 | 2 |
| 51 | O-Ring / O-Ring / Joint Tonque | 6.362-482 | 1 |
| 52 | Ventilsitz / Valve Seat / Siege de Soupape | 5.581-093 | 1 |
| 53 | Sicherheitsventil / Safety Valve / Soupape de Sureté | 6.412-684 | 1 |
| 55 | Ventilschraube / Valve Screw / Vis de Soupape | 5.583-062 | 1 |
| 56 | Dichtung A 10x13.5 / Joint Ring / Anneau D'étanchéité | 7.362-003 | 2 |
| 57 | HD-Schlauch 5/260 / Hp-Hose / Tuyau Souple A Hp | 6.388-843 | 1 |
| 58 | Hohlschraube M 10x1 / Banjo Bolt / Boulon Creux | 7.386-363 | 1 |
| 59 | Pumpenset siehe Seite 11 (Bildtafel H 16) / Pump set see Page 11 (Board H 16) / Jeu de pieces de rechange de pompe voir Page 11 (Tableau H 16) | 2.880-283 | 1 |

Teile sind im Ersatzteilset 2.880-266 enthalten

Parts included in spare parts kits 2.880-266

Pièces comprises dans le jeu de pièces rechange 2.880-266

| Seite Page Page | Bildtafel Board Tableau | Pos. Item Pos. | Benennung Designation Désignation | Teile-Nr. Part No. No. pièces | Stck. Qty. Nbr. |
|-----------------------|-------------------------------|----------------------|--|-------------------------------------|-----------------------|
| 25 | B7 | 1 | 6-Kant-Schraube M 5×16 / Hex. head screw / Vis à 6 pans | 7.304-372 | 3 |
| | | 4 | Zündelektrode (2 Stück) / Ignition electrode (2) / Electrodes (2) | 2.880-177 | 2 |
| | | 5 | Dichtring C 12×15,5 / Sealing ring / Bague d'étanchéité | 7.362-004 | 2 |
| | | 8 | 6-Kant-Mutter M 5 / Hex. nut / Erou à 6 pans | 7.311-037 | 3 |
| | | 10 | Düse 1,5 gpH / Nozzle / Gicleur | 6.415-040 | 1 |
| | | 11 | 6-Kant-Schraube M 5×12 / Hex. head screw / Erou à 6 pans | 7.304-371 | 1 |

Teile sind im Pumpenset 2.880-283 enthalten

Parts included in pump kit 2.880-283

Compris dans le jeu de pièces de rechange pompe 2.880-283

| Seite Page Page | Bildtafel Board Tableau | Pos. Item Pos. | Benennung Designation Désignation | Teile-Nr. Part No. No. pièces | Stck. Qty. Nbr. |
|-----------------------|-------------------------------|----------------------|--|--|-----------------------|
| 9/13 | B2 | 11 | O-Ring 100×1,78 / O-Ring / Joint torique | 6.362-448 | 1 |
| | | 14 | O-Ring 34,65×1,78 / O-Ring / Joint torique | 6.362-484 | 3 |
| | | 15 | Nutring 20×28×6/8 / Packing ring / Joint rainuré | 6.365-052 | 3 |
| | | 17 | Nutring 20×30×8/4 / Packing ring / Joint rainuré | 6.365-053 | 3 |
| | | 19 | Scheibe / Washer / Rondelle | 5.115-224 | 3 |
| | | 20 | Nutring 20×28×5 / Packing ring / Joint rainure | 6.365-061 | 4 |
| | | C2 | 34 | Ventil komplett / Valve complete / Soupape complete | 4.580-117 |
| 17 | B3 | 13 | Dichtring A 18×22 / Sealing ring / Bague d'étancheite | 7.362-009 | 1 |