

# **KÄRCHER®** *KX 8030.1/1025.1*

## FEATURES

- Designed and engineered exclusively for pressure washers.
- Seven year limited warranty.
- Forged brass manifold with an exclusive lifetime warranty.
- Large capacity, die-cast, anodized aluminum oil-bath crankcase.
- Over-sized connecting rods for maximum life.
- Heavy-duty tapered roller bearing.
- Solid ceramic plungers with mirror finish and corrosion resistance.
- Stainless steel inlet and discharge valve assemblies.
- Forged valve caps with recessed O-rings to withstand high pressures.
- Dacromet® coated manifold bolts for extra corrosion resistance.
- Long life seals.



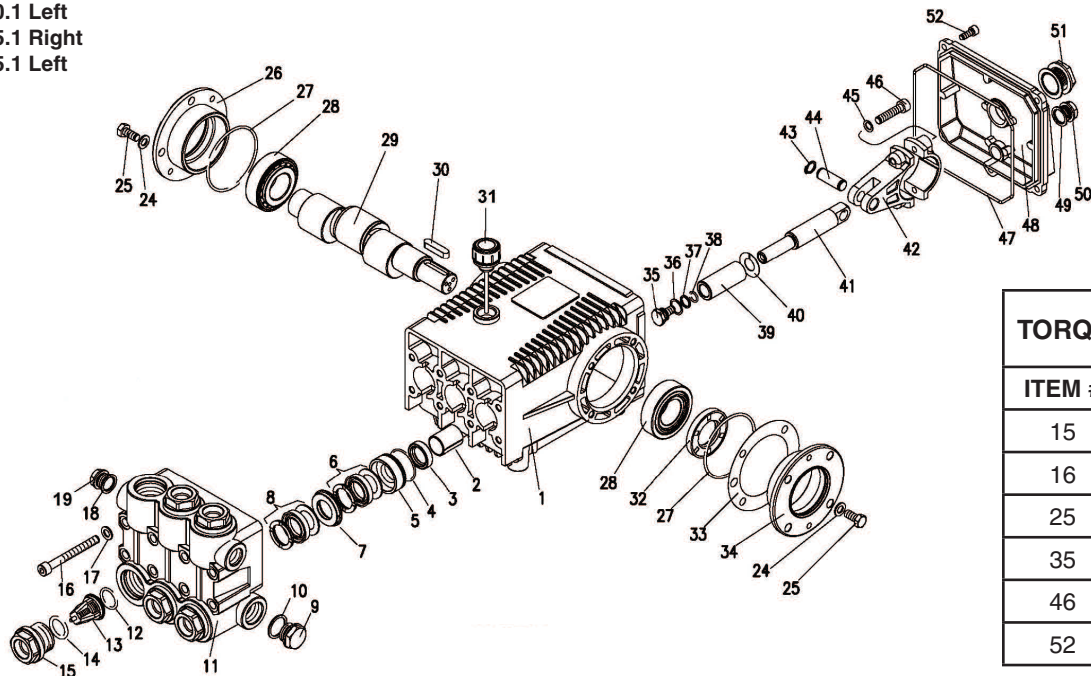
## SPECIFICATIONS

PUMP MODEL	KX 8030.1	KX 1025.1
Maximum Volume (GPM)	8	10.6
Max. Discharge Pressure (PSI)	3000	2500
Maximum Pump Speed	1460	1725
Maximum Inlet Pressure	125 psi	
Maximum Inlet Vacuum	9 ft. water (7.9 in. Hg)	
Bore	25mm	25mm
Stroke	15mm	17mm
Crankcase Oil Capacity	40 oz.	
Maximum Fluid Temperature	185° F	
Inlet Port Thread	3/4" BSP	
Discharge Port Thread	1/2" BSP	
Shaft Diameter x Shaft Length	25mm x 55mm	
Weight	39 lbs	
Dimensions (L x W x H)	12.85 x 10.23 x 6.45	

**KÄRCHER • USA**

Phone: 1-888-805-9852 or visit our web page at [www.karchercommercial.com](http://www.karchercommercial.com)

9.803-400.0 KX 8030.1 Right  
 9.803-401.0 KX 8030.1 Left  
 9.803-402.0 KX 1025.1 Right  
 9.803-403.0 KX 1025.1 Left



## TORQUE SPECS

ITEM #	FT. LBS.
15	95
16	45
25	8
35	10
46	30
52	7.6

## PARTS LIST

ITEM	PART NO.	DESCRIPTION	QTY	ITEM	PART NO.	DESCRIPTION	QTY	ITEM	PART NO.	DESCRIPTION	QTY
1	9.803-163.0	Crankcase	1	18	9.803-199.0	Copper Washer 1/2	1	37*	See Kit Below	O-Ring Ø1.78x10.82	3
2	9.803-195.0	Plunger Guide	3	19	9.802-926.0	Brass Plug 1/2	1	38*	See Kit Below	Teflon Ring	3
3*	See Kit Below	Plunger Oil Seal	3	24	9.802-884.0	Washer	8	39*	See Kit Below	Plunger 25mm	3
4*	See Kit Below	O-Ring Ø1.78 x 37.82	3	25	9.802-944.0	Flange Screw	8	40*	See Kit Below	Copper Spacer	3
5*	See Kit Below	Pressure Ring, 25mm	3	26	9.803-182.0	Closed Bearing Housing	1	41	9.803-143.0	Plunger Rod	3
6*	See Kit Below	U-Seal, 25mm	3	27	9.803-186.0	O-Ring Ø2.62 x 71.12	2	42	9.803-157.0	Connecting Rod	3
7*	See Kit Below	Intermediate Ring 25mm	6	28	9.803-160.0	Roller Bearing	2	43	9.802-912.0	Snap Ring	6
8*	See Kit Below	U-Seal, 25mm	3	29	9.803-288.0	Crankshaft (8030)	1	44	9.802-915.0	Connecting Rod Pin	3
9	9.803-285.0	Brass Plug, 3/4	1		9.803-289.0	Crankshaft (1025)	1	45	9.802-889.0	Spring Washer	6
10	9.803-286.0	Copper Washer 3/4	1	30	9.803-167.0	Crankshaft Key	1	46	9.802-937.0	Connecting Rod Screw	6
11	9.802-935.0	Manifold Housing	1	31	9.802-923.0	Oil Dip Stick	1	47	9.803-194.0	O-Ring Ø2.62 x 152.07	1
12*	9.803-291.0	O-Ring Ø2.62 x 23.47	6	32	9.803-139.0	Crankshaft Seal	1	48	9.803-166.0	Crankcase Cover	1
13*	See Kit Below	Valve Assembly	6	33	9.803-177.0	Shim	2	49	9.803-197.0	Gasket, G3/8	1
14*	9.803-287.0	O-Ring Ø3.53 x 25.80	6	34	9.803-181.0	Bearing Housing	1	50	9.802-925.0	Brass Plug 3/8	1
15	9.802-930.0	Valve Plug	6	35*	See Kit Below	Plunger Bolt	3	51	9.803-202.0	Sight Glass G3/4	1
16	9.802-942.0	Manifold Stud Bolt	8	36*	See Kit Below	Copper Spacer	3	52	9.802-939.0	Cover Screw	5
17	9.802-890.0	Lock Washer	8								

\* Available in kit (See below)

## REPAIR KITS

KIT NUMBERS	8.725-364.0	8.725-365.0	9.802-614.0	9.802-608.0	9.802-606.0
KIT DESCRIPTION	Plunger Seal 25 mm	Seal Packing 25mm	Plunger 25mm	Complete Valve	Plunger Oil Seals
ITEMS NUMBERS INCLUDED	4, 6, 8	4, 5, 6, 7, 8	35, 36, 37, 38, 39, 40	12, 13, 14	3
NUMBER OF CYLINDERS KIT WILL SERVICE	3	1	1	6	3