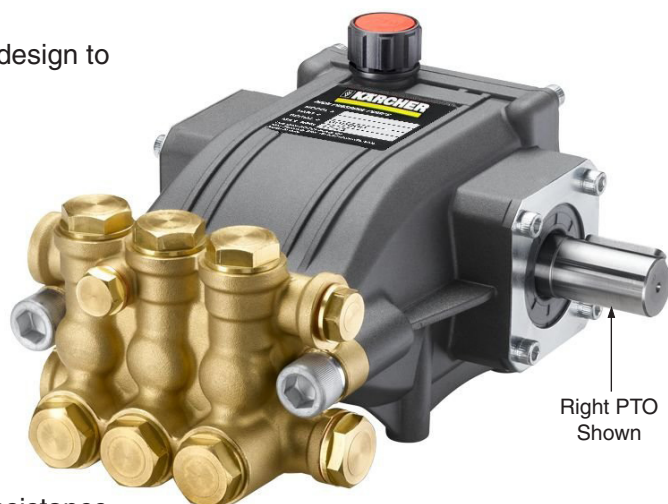


KB Pump Series

FEATURES

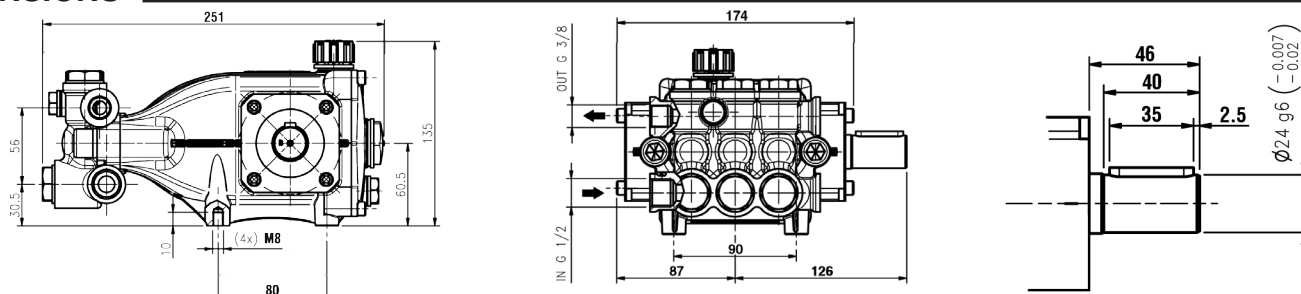
- Designed and engineered exclusively for Kärcher pressure washers.
- Seven year limited warranty.
- NEW** • Forged brass manifold with FEA computer enhanced design to increase strength in critical areas.
- NEW** • Die cast aluminum crackcase with extended piston rod guides for long seal life.
- NEW** • Die cast aluminum connecting rods with extended length and size.
- NEW** • Mirror finish ceramic plungers with increased thickness to resist thermal shock and corrosion.
- Industrial duty ball bearings.
- Stainless steel inlet and discharge valve assemblies.
- Forged valve caps with recessed O-rings to withstand leakage at high pressures.
- Dacromet® coated manifold bolts for extra corrosion resistance.
- U-Seal packing assembly for long life and temperature resistance.



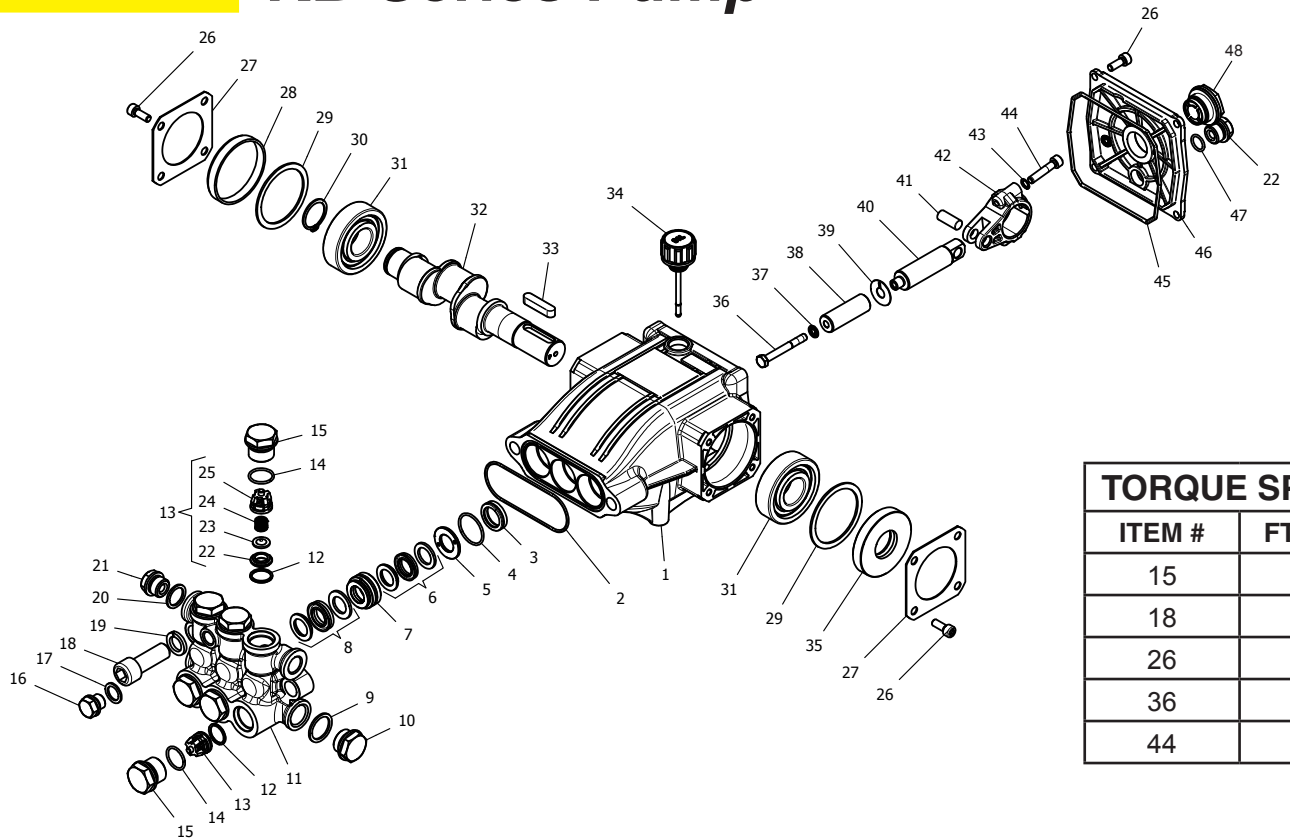
SPECIFICATIONS

PUMP MODEL	KB3030	KB4025
Part Number	8.923-781.0 Right PTO 8.923-782.0 Left PTO	8.923-783.0 Right PTO 8.923-784.0 Left PTO
Maximum Volume (GPM)	3.0	4.0
Max. Discharge Pressure (PSI)	3000	2500
Maximum Pump Speed	1650	1550
Maximum Inlet Pressure	125 PSI	
Maximum Inlet Vacuum	9 ft. water (7.9 in. HG)	
Bore	16 mm	
Stroke	12.4 mm	17.2 mm
Crankcase Oil Capacity	13.5 oz	
Maximum Fluid Temperature	185° F	
Inlet Port Thread	1/2" BSP	
Discharge Port Thread	3/8" BSP	
Shaft Diameter x Shaft Length	24 mm x 35 mm	
Weight	14.5 lbs	
Dimensions (L x W x H)	9.85 x 8.75 x 5.30 in.	

DIMENSIONS



KÄRCHER® KB Series Pump



TORQUE SPECS	
ITEM #	FT. LBS.
15	65
18	66
26	8
36	10
44	10

PARTS LIST

ITEM	PART NO.	DESCRIPTION	QTY	ITEM	PART NO.	DESCRIPTION	QTY	ITEM	PART NO.	DESCRIPTION	QTY
1	8.754-841.0	Crankcase	1	20	9.803-198.0	Washer, Copper G3/8	1	36*	8.754-855.0	Bolt, Plunger	3
2	8.754-846.0	O-ring Ø1.78 X 72.75	1	21	8.707-262.0	Plug, Brass G3/8	2	37*	8.754-092.0	Spacer, Copper	3
3*	See Kits Below	Plunger Oil Seal	3	22*	See Kits Below	Valve Seat	6	38*	8.754-848.0	Plunger, 16 mm	3
4*	See Kits Below	O-ring Ø1.78 X 26.7	3	23*	See Kits Below	Valve Plate	6	39*	9.803-962.0	Spacer, Copper	3
5*	See Kits Below	Washer, Pressure Ring 16 mm	3	24*	See Kits Below	Valve Spring	6	40	8.754-827.0	Plunger Rod	3
6*	See Kits Below	U-Seal, 16 mm	3	25*	See Kits Below	Valve Cage	6	41	9.803-965.0	Connecting Rod Pin	3
7*	See Kits Below	Pressure Ring, 16 mm	3	26	9.802-939.0	Screw, M6 X 16	12	42	9.803-966.0	Connecting Rod	3
8*	9.803-199.0	U-Seal, 16 mm	3	27	8.717-137.0	Bearing Cover	2	43	9.803-218.0	Washer, 6 mm	6
9	9.803-199.0	Washer, Copper G1/2	1	28	9.803-954.0	Bearing Seal	1	44	8.933-020.0	Screw, Connecting Rod	6
10	9.802-926.0	Plug, Brass G1/2	1	29	8.754-843.0	Seal Spacer, Crankshaft	2	45	8.754-847.0	O-ring Ø2.62 X 111.62	1
11	8.754-852.0	Manifold	1	30	9.802-914.0	Snap Ring, 25 mm	1	46	8.754-842.0	Cover, Crankcase	1
12*	8.717-233.0	O-ring Ø1.78 X 15.6	6	31	9.803-955.0	Bearing, Ball	2	47	9.803-906.0	O-ring Ø1.78 X 14	1
13*	See Kits Below	Valve Assembly	6	32	8.754-829.0	Shaft, 24 mm 3030	1	48	9.803-202.0	Sight Glass, G3/4	1
14*	9.803-948.0	O-ring Ø1.78 X 18.77	6		8.754-830.0	Shaft, 24 mm 4025	1				
15	9.803-949.0	Valve Plug	6	33	9.803-167.0	Key, Crankshaft	1				
16	8.754-851.0	Plug, Brass G1/4	1	34	8.754-219.0	Oil Dipstick	1				
17	8.718-973.0	Washer, Copper G1/4	1	35	8.933-010.0	Seal, Crankshaft	1				
18	8.754-854.0	Bolt, Manifold M14 X 40	2								
19	8.754-850.0	Washer, Lock	2								

* Available in kit (See below)

REPAIR KITS

KIT NUMBERS	8.754-856.0	8.754-857.0	8.754-858.0	8.754-859.0	9.803-937.0
KIT DESCRIPTION	Plunger Seals 16 mm	Seal Packing 16 mm	Plunger 16 mm	Complete Valve	Plunger Oil Seals
ITEM NUMBERS INCLUDED	4, 6, 8	4, 5, 6, 7, 8	36, 37, 38, 39	12, 13, 14	3
NUMBER OF CYLINDERS KIT WILL SERVICE	3	1	1	6	3