

## FEATURES

- Designed and engineered exclusively for Kärcher pressure washers.
- Seven year limited warranty.
- Forged brass manifold with an exclusive lifetime warranty.
- Large capacity, die-cast, anodized aluminum oil-bath crankcase with cooling fins.
- Over-sized connecting rods for maximum life.
- Heavy-duty tapered roller bearing.
- Solid ceramic plungers with mirror finish and corrosion resistance.
- Stainless steel inlet and discharge valve assemblies.
- Forged valve caps with recessed O-rings.
- Dacromet® coated manifold bolts for extra corrosion resistance.

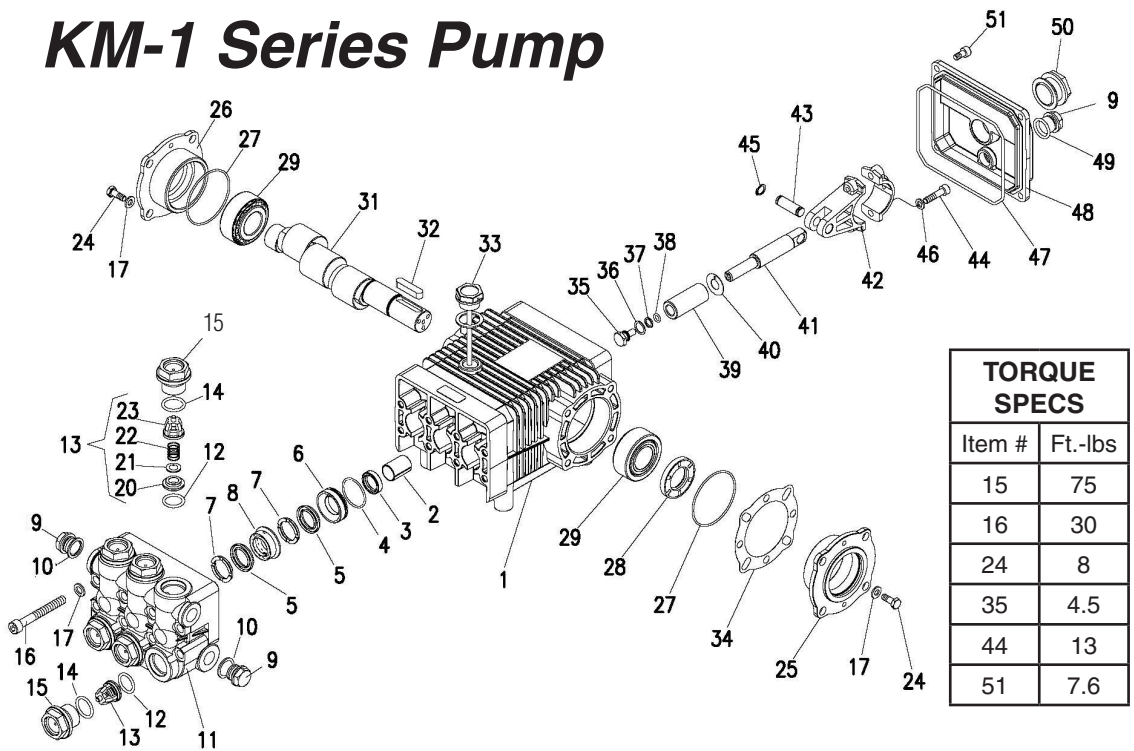


## SPECIFICATIONS

PUMP MODEL	KM4030-1	KM4035-1	KM5030-1	KM4035H-1	KM3540-1
Maximum Volume (GPM)	4	4.8	5.1	4.8	3.5
Max. Discharge Pressure (PSI)	3000	3500	3000	3500	4000
Maximum Pump Speed	1000	1500	1550	1500	1850
Maximum Inlet Pressure	125 PSI				
Maximum Inlet Vacuum	9 ft. water (7.9 in. HG)				
Bore	20 mm	18 mm	20 mm	18 mm	15 mm
Stroke	17mm	17 mm	14.3 mm	17 mm	14.3 mm
Crankcase Oil Capacity	23.3 oz.				
Maximum Fluid Temperature	165°F			185°F	165°F
Inlet Port Thread	1/2-14 BSPP-F				
Discharge Port Thread	3/8-19 BSPP-F				
Shaft Diameter	24 mm				
Weight	22 lbs				
Dimensions (LxWxH)	11 x 8.8 x 5.4 in.				

# KM-1 Series Pump

- 5-1112 KM3540-1
- 5-1110 KM4030-1
- 5-1111 KM4030L-1
- 5-1120 KM4035-1
- 5-1121 KM4035L-1
- 5-1122 KM4035H-1
- 5-1115 KM5030-1
- 5-1114 KM5030L-1



TORQUE SPECS	
Item #	Ft.-lbs
15	75
16	30
24	8
35	4.5
44	13
51	7.6

## PARTS LIST

ITEM	PART NO.	DESCRIPTION	QTY	ITEM	PART NO.	DESCRIPTION	QTY	ITEM	PART NO.	DESCRIPTION	QTY
1	8.717-128.0	Crankcase	1	9	9.802-926.0	Brass Plug 1/2"	1	35*	9.802-936.0	Plunger Bolt	3
2	9.803-196.0	Plunger Guide	3	10	9.803-199.0	Copper Washer 1/2"	1	36*	9.802-885.0	Copper Spacer	3
3*	See Kits Below	Plunger Oil Seal	3	11	9.802-932.0	Manifold Head	1	37*	9.803-188.0	O-Ring Ø1.78 x 7.66	3
4*	9.803-189.0	O-Ring Ø1.78 x 31.47	3	12*	9.803-191.0	O-Ring Ø2.62 x 17.13	6	38*	9.803-155.0	Teflon Ring	3
5*	See Kits Below	"V" Seal (4035)	6	13*	See Kits Below	Valve Assembly	6	39*	See Kits Below	Plunger (4035, 4035H)	3
	See Kits Below	"V" Seal (4030, 5030)	6	14*	9.803-193.0	O-Ring Ø2.62 x 20.29	6		See Kits Below	Plunger (4030, 5030)	3
	See Kits Below	"V" Seal (3540)	6	15	9.802-928.0	Valve Plug	6		See Kits Below	Plunger (3540)	3
6*	9.803-205.0	Pressure Ring 18mm (4035)	3	16	9.802-925.0	Manifold Stud Bolt	8	40*	9.802-888.0	Copper Spacer	3
	9.803-204.0	Pressure Ring 20mm (4030, 5030)	3	17	9.802.884.0	Washer	16	41	9.803-144.0	Plunger Rod	3
	8.717-310.0	Pres Ring 15mm (3540)	3	18	9.803-198.0	Copper Washer 3/8	1	42	9.803-158.0	Connecting Rod	3
7*	9.803-171.0	Support Ring 18mm (4035)	6	19	9.802-925.0	Brass Plug 3/8	1	43	9.802-916.0	Connecting Rod Pin	3
	9.803-172.0	Support Ring 20mm (4030, 5030)	6	24	9.802-944.0	Hexagonal Screw	8	44	9.803-238.0	Connecting Rod Screw	6
	8.717-179.0	Support Ring 15mm (3540)	6	25	8.717-209.0	Bearing Housing	1	45	9.802-913.0	Snap Ring	6
8*	9.803-174.0	Intermed. Ring 18mm (4035)	3	26	8.717-210.0	Closed Bearing Housing	1	46	9.803-218.0	Spring Washer	6
	9.803-173.0	Intermed. Ring 20mm (4030, 5030)	3	27	9.803-192.0	O-Ring Ø1.78 x 60.05	2	47	8.717-243.0	O-Ring, Ø2.62 x 126.67	1
	8.717-178.0	Intermediate Ring 15mm (3540)	3	28	9.803-140.0	Crankshaft Seal	1	48	8.717-145.0	Crankcase Cover	1
				29	9.803-159.0	Tapered Roller Bearing	2	49	9.803-906.0	O-Ring, Ø1.78 x 14	1
				31	9.803-146.0	Crankshaft (5030,3540)	1	50	9.803-202.0	Sight Glass 3/4	1
					9.803-147.0	Crankshaft (4030,4035/H)	1	51	9.802-939.0	Cover Screw	5
				32	9.803-167.0	Crankshaft Key	1	52	8.730-836.0	▲ Bach Ring 1/2" (4035H)	3
				33	9.802-921.0	Oil Dip Stick	1				
				34	9.803-178.0	Shim	2				

\* Available in kit (See below) ▲ Not Shown

## REPAIR KITS

REPAIR KIT NUMBER	9.802-628.0	9.802-619.0	9.802-622.0	9.802-624.0	9.802-617.0	9.802-623.0	9.802-629.0	9.802-620.0	9.802-621.0	9.802-603.0	9.802-609.0
KIT DESCRIPTION	*Plunger Seal KM-4035	Plunger Seal KM-4030	Plunger Seal KM-3540	**Complete Seal Packing KM-4035	Complete Seal Packing KM-4030	Complete Seal Packing KM-3540	Plunger KM-4035	Plunger KM-5030	Plunger KM-3540	Complete Valve	Plunger Oil Seals
ITEM NUMBERS INCLUDED	4, 5, 7	4, 5, 7	4, 5, 7	3, 4, 5, 6, 7, 8	3, 4, 5, 6, 7, 8	3, 4, 5, 6, 7, 8	34, 35, 36, 37, 38, 39	34, 35, 36, 37, 38, 39	34, 35, 36, 37, 38, 39	12, 13, 14	3
NO. OF CYLINDERS KIT WILL SERVICE	3	3	3	1	1	1	1	1	1	6	3

\* For KM 4035H High Heat Packings, Use 70-261212

\*\*For KM 4035H High Heat Packings, Use 70-261213