

**Spare parts list**  
**(5.952-855.0) Spare parts list HDS 990**

## DE HINWEISE

### Weitere Sprachen:

Diese Ersatzteilliste ist in weiteren Sprachen erhältlich. Sie erhalten diese unter [www.kaercher.com](http://www.kaercher.com) im Bereich Service.  
Die Schreibweise der Teilenummer, z.B. 75456380, entspricht der Teilenummer 7.545-638.0.

### Mengenangaben:

Die Mengenangaben in der Ersatzteilliste entsprechen den in der Baugruppe verbauten Stückzahlen der Bauteile.

### Meterware:

Ersatzteile welche als Meterware geliefert werden sind auf Einbaulänge selbst zu kürzen. Die Stückzahlen sind als Mindestbestellmenge =1m angegeben und müssen je nach Bedarf auf weitere volle Meterzahlen erhöht werden.

### Versionen/ Werknummern:

Sind Versionen oder Werknummern in der Ersatzteilliste angegeben, ist anhand dieser vor Bestellung zu prüfen, welches Bauteil für ihr Gerät verwendet werden muss.

### Lackierte Teile:

Bei Bestellungen von lackierten Teilen welche in der Ersatzteilliste nicht in verschiedenen Farben ausgewiesen sind, ist zusätzlich die Farbnummer oder Farbe mit anzugeben.

### Technische Änderungen:

Technische Änderungen sowie das Recht der ausschließlichen Auswertung unseres geistigen Eigentums behalten wir uns vor.

## EN INSTRUCTIONS

### Other languages:

This list of spare parts is also available in other languages. You can get this list from [www.kaercher.com](http://www.kaercher.com) in the Service division.  
The designation of the part number e.g. 75456380 is equal to 7.545-638.0.

### Quantity details:

The quantity details in the spare parts list correspond to the number of pieces of the component installed in the assembly group.

### Piece goods:

Spare parts that are sold as piece goods are to be cut to the desired length. The quantities have been indicated as minimum order quantity =1m and must be rounded off to the full meter figure depending on your requirements.

### Version/ Plant numbers:

If version or plant numbers are mentioned in the spare parts list, then use the same to check before ordering which spare part needs to be used for your appliance.

### Painted parts:

While ordering painted parts that are not mentioned in the spare parts list in their colour variations, please mention the colour number or the colour you require.

### Technical changes:

We reserve the right to make technical changes as well as the right to exclusive use of our intellectual property.

## FR REMARQUES

### Autres langues:

Cette liste de pièces de rechange est disponible en autres langues. Cela est disponible sous [www.kaercher.com](http://www.kaercher.com) dans le menu Service.  
La désignation du numéro de pièce, par ex. 75456380, correspond au numéro de pièce 7.545-638.0.

### Indications de quantité:

Les indications de quantité dans la liste de pièces de rechange correspondre aux nombres de pièces des composant utilisées dans la construction.

### Matériel au mètre:

Les pièces de rechange qui sont livrées au mètre doivent être raccourcies à longueur souhaitée par l'acheteur même. Les nombres des pièces sont indiquées en quantité de commande minimale = 1m et doivent être augmentés selon le besoin à une chiffre de mètre complète.

### Versions/ Numéros d'usine:

Lorsqu'il sont indiquées des versions ou des numéros d'usine dans la liste de pièces de rechange, vous devez vérifier que composant doit être utilisé pour votre appareil.

### Pièces laquées:

Pour commander des pièces laquées, où les différentes couleurs ne sont pas indiquées dans la liste des pièces de rechange, vous devez indiquer en plus le numéro de la couleur ou seulement la couleur.

### Modifications techniques:

Nous nous réservons la possibilité des modifications techniques ainsi le droit d'exploitation exclusive de notre propriété intellectuelle.

## IT AVVERTENZE

### Altre lingue:

Il presente elenco di parti di ricambio è disponibile sul nostro sito Web anche in altre lingue: sotto [www.kaercher.com](http://www.kaercher.com) alla voce "Service".

L'indicazione del codice pezzo, ad es. 75456380, corrisponde al codice pezzo 7.545-638.0

### Indicazioni di quantità:

Le indicazioni di quantità riportate dall'elenco "parti di ricambio" corrispondono al numero delle singole componenti contenute nella rispettiva unità.

### Merce a metro:

Le parti di ricambio fornite come "merce a metro" devono venire in seguito accorciate alla lunghezza necessaria per il montaggio. La quantità unitaria è indicata come "quantità minima di ordinazione = 1m" e deve all'occorrenza venire moltiplicata per il numero intero di metri necessari.

### Versioni / Numeri di fabbricazione:

Quando l'elenco "parti di ricambio" riporta diverse versioni o numeri di fabbricazione, confrontare la versione o il numero di fabbricazione del ricambio desiderato con quelle/i presenti nell'elenco e indicarla/o al momento dell'ordinazione.

### Parti di ricambio verniciate:

Nel caso di ricambi verniciati, se l'elenco parti di ricambio non ne riporta espressamente i diversi colori, al momento dell'ordinazione è necessario indicare anche il colore o il numero del colore desiderato.

### Modifiche tecniche:

Ci riserviamo il diritto di apportare modifiche tecniche così come il diritto di utilizzo esclusivo della nostra proprietà intellettuale.

## ES INDICACIONES

### Otros idiomas:

La lista de piezas de repuesto se puede adquirir en otros idiomas. La puede adquirir en [www.kaercher.com](http://www.kaercher.com) en el área de servicios.

La notación de los números de las piezas, p.ej. 75456380 corresponde al número de pieza 7.545-638.0.

### Cantidades:

Las indicaciones de cantidades de la lista de piezas de repuesto corresponden al número de piezas montadas en el componente.

### Mercancía por metros:

Las piezas de repuesto que se suministran por metros se pueden cortar al largo deseado. La unidad mínima de pedido es de = 1 m y el número de metros completos se puede aumentar según necesidad.

### Versiones/números de fábrica:

Si se indica la versión o número de fábrica en la lista de piezas de repuesto, se debe comprobar en ella la pieza a usar para su aparato antes de realizar el pedido.

### Piezas lacadas:

Al realizar pedidos de piezas lacadas que no estén indicadas en los diferentes colores en la lista de piezas de repuesto, se debe indicar también la referencia del color o el color.

### Modificaciones técnicas:

Reservados los derechos de realizar modificaciones técnicas y aprovechar nuestra propiedad intelectual.

## PL WSKAZÓWKI

### Pozostałe języki:

Ta lista części zamiennych jest dostępna w także w innych językach. Mogą ją Państwo pobrać ze strony [www.kaercher.com](http://www.kaercher.com) w dziale Serwis.

Sposób zapisywania numeru części, np. 75456380, odpowiada numerowi części 7.545-638.0.

### Dane ilości:

Dane ilości podane w liście części zamiennych odpowiadają liczbie sztuk podzespołów tworzących dany moduł.

### Towar sprzedawany na metry:

Części zamienne dostarczane jako towar sprzedawany na metry po zamontowaniu należy samodzielnie skrócić do potrzebnej długości. Liczba sztuk podana jest jako minimalna ilość zamówienia = 1m i w zależności od potrzeb zwiększa się ją o kolejne pełne metry.

### Wersje/ Numer zakładu:

Jeżeli w liście części zamiennych podane są wersje lub numery zakładu, przed zamówieniem na ich podstawie należy sprawdzić, który podzespół stosuje się w Państwa urządzeniu.

### Części lakierowane:

W przypadku zamówień części lakierowanych, które w liście części zamiennych nie podano w wielu kolorach, należy dodatkowo zaznaczyć nr koloru lub kolor.

### Zmiany techniczne:

Zastrzegamy sobie prawo do zmian technicznych oraz wyłącznego wykorzystywania naszej własności intelektualnej.

## **RU УКАЗАНИЯ:**

### **Другие языки:**

Данный список запасных частей также доступен на других языках. Вы найдете его на сайте [www.kaercher.com](http://www.kaercher.com) в разделе Service  
Маркировка номера детали, например, 75456380, соответствует номеру детали 7.545-638.0.

### **Указание количества:**

Количественные данные в списке запасных частей соответствуют числу компонентов, входящих в состав узлов.

### **Товар, продаваемый на метры:**

Запасные части, продающиеся на метры, необходимо обрезать до нужной длины. Число изделий указано в виде минимального объема заказа = 1м и их количество можно округлить до требуемого по мере необходимости.

### **Варианты исполнения/заводские номера:**

Если варианты исполнения или заводские номера указаны в списке запасных частей, то перед заказом необходимо проверить, какая деталь подходит для вашего устройства.

### **Лакированные детали:**

При заказе лакированных деталей, варианты расцветки которых не указаны в списке запасных частей, необходимо дополнительно указать номер цвета или необходимый для вас цвет.

### **Технические изменения:**

Мы оставляем за собой право на технические изменения, а также право на исключительное использование нашей интеллектуальной собственности.

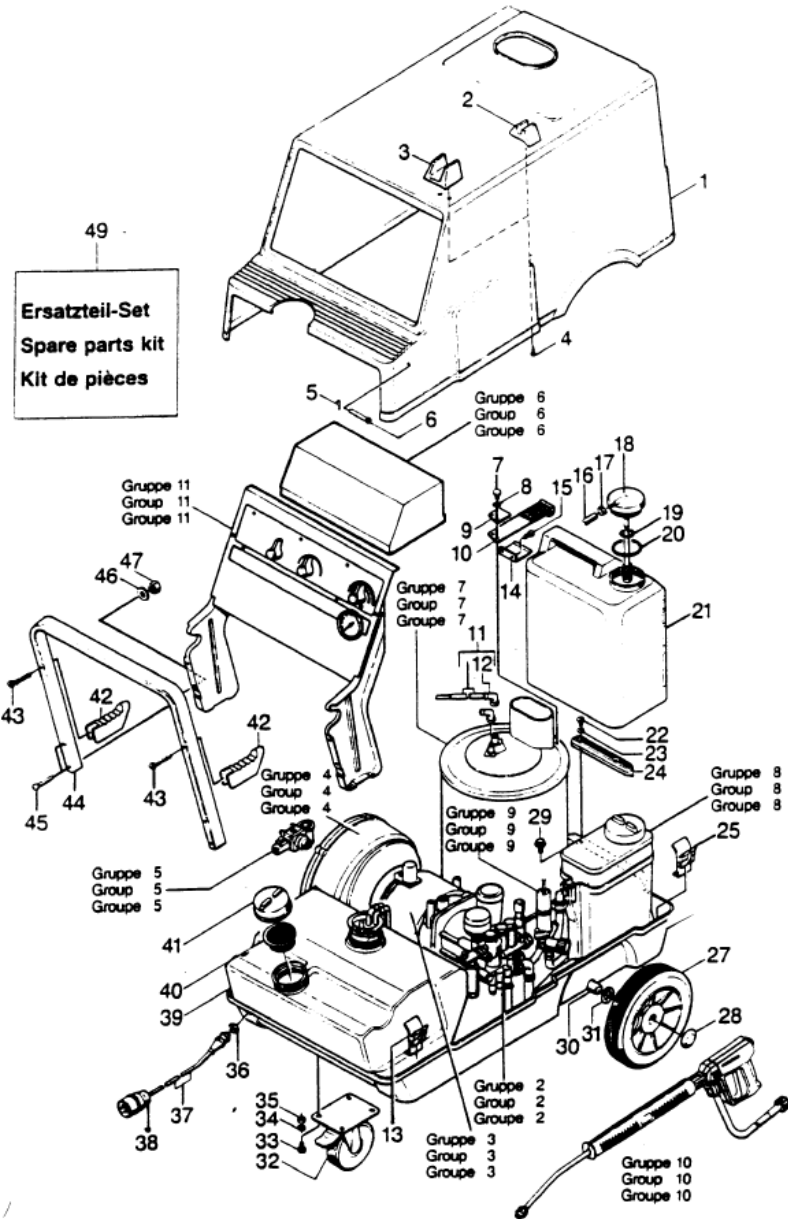
## Table of contents

---

<b>Spare parts list HDS 990 (5.952-855.0)</b> .....	6
10 Individual parts.....	7
49 Spare part set HDS 750/890 (2.883-017.0).....	10
20 Pump set.....	11
59 PUMP SET HDS 755/760 (2.880-283.0).....	15
30 Motor.....	16
40 Blower.....	18
50 Fuel pump.....	21
60 Electric control box.....	23
12 Spare parts set ignition transformer (2.883-468.0).....	26
70 Flow heater.....	27
4 Spare part set ignition electrode (2.880-177.0).....	30
80 Float chest.....	31
90 Safety system.....	34
22 Reed switch replacement (2.880-194.0).....	37
100 Accessories.....	38
35 Power nozzle 25055 (2.883-401.0).....	41
37 HAND TRIGGER GUN (2.883-175.0).....	42
110 Control panel.....	43
120 Special tools.....	46
10 Tool sleeve grooved rings -Piston D20mm.....	47

**Spare parts list HDS 990 (5.952-855.0)**

Pos	Name	Qty.	Unit	from ser.nr.	up to ser.nr.
10	Individual parts	1.000	ST	0000000000	0000000000
20	Pump set	1.000	ST	0000000000	0000000000
30	Motor	1.000	ST	0000000000	0000000000
40	Blower	1.000	ST	0000000000	0000000000
50	Fuel pump	1.000	ST	0000000000	0000000000
60	Electric control box	1.000	ST	0000000000	0000000000
70	Flow heater	1.000	ST	0000000000	0000000000
80	Float chest	1.000	ST	0000000000	0000000000
90	Safety system	1.000	ST	0000000000	0000000000
100	Accessories	1.000	ST	0000000000	0000000000
110	Control panel	1.000	ST	0000000000	0000000000
120	Special tools	1.000	ST		



## 10 Individual parts

ET/VT (spare/wear parts)	Pos	Material #	Name	Qty.	Unit	from ser.nr.	up to ser.nr.	Footnote text
	1		Stockpiling discontinued	1.000	ST	0000000000	0000000000	
	2	5.042-406.0	Holder	1.000	ST	0000000000	0000000000	
	3	5.042-402.0	Holder	1.000	ST	0000000000	0000000000	
	4	6.303-122.0	M4 .2X13 DIN 7981 TORX T15 PAN HD HI/LO	3.000	ST	0000000000	0000000000	
X-X	5	6.343-006.0	Fuse	2.000	ST	0000000000	0000000000	
X-X	6	6.373-322.0	Bolt	2.000	ST	0000000000	0000000000	
X-X	7	7.306-076.0	Screw M 5x12-ST- 8.8-A2R (IN6RD)	1.000	ST	0000000000	0000000000	
	8	7.313-002.0	Spring washer B 5-FSt-A3E DIN 127	1.000	ST	0000000000	0000000000	
	9	5.021-953.0	Angle	1.000	ST	0000000000	0000000000	
	10	5.042-257.0	Holder	1.000	ST	0000000000	0000000000	
X	11	4.821-045.0	Ignition cable	2.000	ST	0000000000	0000000000	
X-X	12	6.618-076.0	Spark plug connector	2.000	ST	0000000000	0000000000	
	13	5.042-320.0	Holder	1.000	ST	0000000000	0000000000	
	14		Stockpiling discontinued	1.000	ST	0000000000	0000000000	
X-X	15	7.303-038.0	Screw M5x12 -St-P2R (In6Rd)	2.000	ST	0000000000	0000000000	
X-X	16	6.388-225.0	Hose DN 7	2.000	M	0000000000	0000000000	TO ORDER AS CUT GOODS
X-X	17	6.388-559.0	Hose clip	2.000	ST	0000000000	0000000000	
X-X	18	5.030-355.0	CAP	1.000	ST	0000000000	0000000000	
X-X	19	6.362-490.0	O-Ring seal 47,0 X 4,5 -NBR 50	1.000	ST	0000000000	0000000000	
	20	6.362-491.0	O-Ring seal 80,0x4,5-NBR 50	1.000	ST	0000000000	0000000000	
X	21	5.071-025.0	Tank	1.000	ST	0000000000	0000000000	
	22	7.306-077.0	Screw M5x16 -8.8-R2R (In6Rd)	2.000	ST	0000000000	0000000000	
	23	7.312-278.0	Washer 5-200HV-A2E ISO7093-1	2.000	ST	0000000000	0000000000	
	24	5.057-024.0	Support	1.000	ST	0000000000	0000000000	
	25	5.042-256.0	Holder	2.000	ST	0000000000	0000000000	

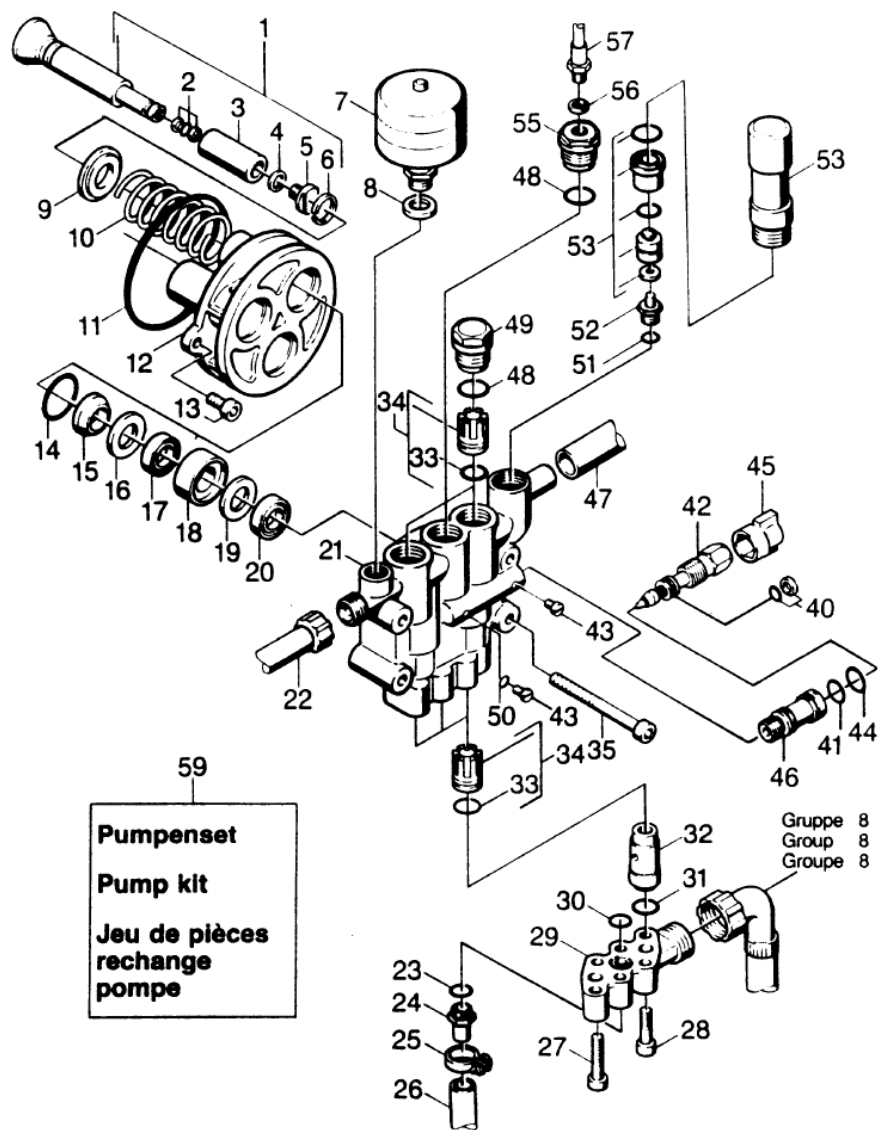


## 10 Individual parts

ET/VT (spare/wear parts)	Pos	Material #	Name	Qty.	Unit	from ser.nr.	up to ser.nr.	Footnote text
	27	4.515-100.0	Wheel complete sw/sw	2.000	ST	0000000000	0000000000	SET OF 2 PIECES BLACK
X-X	28	6.343-137.0	Quick-fastener	2.000	ST	0000000000	0000000000	
	29	6.303-031.0	Screw M8x16-ST-A2R DIN 7500-1	2.000	ST	0000000000	0000000000	
	30	5.105-063.0	Axle	1.000	ST	0000000000	0000000000	
X	31	7.312-060.0	Washer 24-100HV-A3E ISO 7091	8.000	ST	0000000000	0000000000	
X-X	32	6.435-071.0	Castor 125	1.000	ST	0000000000	0000000000	
	33	7.304-395.0	Hexagonal head screw M8x16-8.8-A2E ISO	4.000	ST	0000000000	0000000000	
X-X	34	7.312-004.0	Washer 8 -200HV-A3E ISO 7090	4.000	ST	0000000000	0000000000	
X-X	35	7.311-004.0	Hexagon nut M8 -8-A3E ISO 4032	4.000	ST	0000000000	0000000000	
	36	6.641-480.0	Locknut PG13,5	1.000	ST	0000000000	0000000000	
	37		Stockpiling discontinued	1.000	ST	0000000000	0000000000	
X	38	6.646-030.0	Plug CEE 16A	1.000	ST	0000000000	0000000000	
	39		Stockpiling discontinued	1.000	ST	0000000000	0000000000	
X-X	40	6.414-275.0	Strainer D 70	1.000	ST	0000000000	0000000000	
X-X	41	5.063-217.0	Cover	1.000	ST	0000000000	0000000000	
	42	5.042-253.0	Holder	2.000	ST	0000000000	0000000000	
	43		Stockpiling discontinued	2.000	ST	0000000000	0000000000	
	44	5.321-121.0	Handhold	1.000	ST	0000000000	0000000000	
	45	7.306-133.0	Screw M6x50 -8.8-R3R (In6Rd)	4.000	ST	0000000000	0000000000	
X-X	46	7.312-276.0	Washer 6 -200HV-A2E ISO7093-1	4.000	ST	0000000000	0000000000	
X-X	47	7.311-425.0	Hexagon nut M6 -04-A2E ISO 10511	4.000	ST	0000000000	0000000000	
	49	2.883-017.0	Spare part set HDS 750/890	1.000	ST	0000000000	0000000000	

**49 Spare part set HDS 750/890 (2.883-017.0)**

ET/VT (spare/wear parts)	Pos	Material #	Name	Qty.	Unit	from ser.nr.	up to ser.nr.
X-X	10	5.115-224.0	Washer	3.000	ST	0000000000	0000000000
X-X	20	6.343-143.0	Snap ring A 6	1.000	ST	0000000000	0000000000
X-X	30	6.362-160.0	O-Ring seal 17,3 X 2,4	1.000	ST	0000000000	0000000000
X-X	40	6.362-365.0	O-Ring seal complete 1ST.-R.- 7,65X 1,7	1.000	ST	0000000000	0000000000
X	50	6.362-388.0	O-Ring seal 8,0x1,5 -EPDM 70	1.000	ST	0000000000	0000000000
X-X	60	6.362-448.0	O-Ring seal 100,0 X 1,78	1.000	ST	0000000000	0000000000
X-X	70	6.362-477.0	O-Ring seal complete 1ST.-R.	1.000	ST	0000000000	0000000000
X-X	80	6.362-484.0	O-Ring seal 34,65X 1,78	3.000	ST	0000000000	0000000000
X-X	90	6.365-052.0	Grooved ring 20X28X6/8	3.000	ST	0000000000	0000000000
X-X	100	6.365-053.0	Compact seal 20X30X6	3.000	ST	0000000000	0000000000
X-X	110	6.365-330.0	Grooved ring	3.000	ST	0000000000	0000000000
X-X	120	6.414-111.0	Strainer	1.000	ST	0000000000	0000000000
X-X	130	6.472-111.0	O-Ring seal 32,0 X 1,6	1.000	ST	0000000000	0000000000
	140	6.472-112.0	O-Ring seal 10,0 x 2,4 NBR 70	1.000	ST	0000000000	0000000000
X-X	150	6.472-113.0	Filter cartridge	1.000	ST	0000000000	0000000000



## 20 Pump set

ET/VT (spare/wear parts)	Pos	Material #	Name	Qty.	Unit	from ser.nr.	up to ser.nr.	Footnote text
X-X	1	4.553-075.0	Piston complete	3.000	ST	0000000000	0000000000	
X-X	2	6.362-365.0	O-Ring seal complete 1ST.-R.- 7,65X 1,7	3.000	ST	0000000000	0000000000	
X-X	3	5.110-220.0	Sleeve ceramic	3.000	ST	0000000000	0000000000	
X-X	4	5.363-162.0	Joint ring	3.000	ST	0000000000	0000000000	
X-X	5	5.305-111.0	Shaped screw	3.000	ST	0000000000	0000000000	
X-X	6	6.472-331.0	Snap ring 20	3.000	ST	0000000000	0000000000	
	7	6.505-034.0	Pressure accumulator	1.000	ST	0000000000	0000000000	
X	8	6.362-176.0	O-Ring seal 6,07x1,78	1.000	ST	0000000000	0000000000	
	9		Stockpiling discontinued	3.000	ST	0000000000	0000000000	
X-X	10	5.332-150.0	Helical spring	3.000	ST	0000000000	0000000000	
X-X	11	6.362-448.0	O-Ring seal 100,0 X 1,78	1.000	ST	0000000000	0000000000	
X-X	12	5.060-182.0	Housing	1.000	ST	0000000000	0000000000	
X-X	13	7.306-041.0	Cylinder head screw M8x20 -8.8-A2E ISO	3.000	ST	0000000000	0000000000	
X-X	14	6.362-484.0	O-Ring seal 34,65X 1,78	3.000	ST	0000000000	0000000000	
X-X	15	6.365-052.0	Grooved ring 20X28X6/8	3.000	ST	0000000000	0000000000	
X-X	16	5.115-255.0	Washer	3.000	ST	0000000000	0000000000	
X-X	17	6.365-053.0	Compact seal 20X30X6	3.000	ST	0000000000	0000000000	
X-X	18	5.112-181.0	Bush	3.000	ST	0000000000	0000000000	
X-X	19	5.115-224.0	Washer	3.000	ST	0000000000	0000000000	
X-X	20	6.365-330.0	Grooved ring	3.000	ST	0000000000	0000000000	
X	21	4.550-146.0	Cylinder head complete	1.000	ST	0000000000	0000000000	
X-X	22	6.388-859.0	High pressure hose DN 8	1.000	ST	0000000000	0000000000	
	23	6.362-427.0	O-Ring seal 15,0x2,0	1.000	ST	0000000000	0000000000	
X-X	24	4.580-114.0	Valve	1.000	ST	0000000000	0000000000	
X-X	25	6.388-515.0	Hose clip	1.000	ST	0000000000	0000000000	

## 20 Pump set

ET/VT (spare/wear parts)	Pos	Material #	Name	Qty.	Unit	from ser.nr.	up to ser.nr.	Footnote text
X-X	26	6.388-194.0	Hose DN 7	1.000	M	0000000000	0000000000	TO ORDER AS CUT GOODS
X-X	27	7.306-105.0	Screw M6x30 -8.8-R3R (In6Rd)	4.000	ST	0000000000	0000000000	
X-X	28	7.306-043.0	Cylinder head screw M8x30 -8.8-A2E ISO	2.000	ST	0000000000	0000000000	
X	29	5.587-107.0	Valve housing	1.000	ST	0000000000	0000000000	
X-X	30	6.362-480.0	O-Ring seal 12,42x 1,78	1.000	ST	0000000000	0000000000	
X-X	31	6.362-153.0	O-Ring seal 15,3 X 2,4-NBR 70	2.000	ST	0000000000	0000000000	
X-X	32	5.110-210.0	Sleeve	2.000	ST	0000000000	0000000000	
X-X	33	6.362-481.0	O-Ring seal 14,0 x 2,0 NBR 80	6.000	ST	0000000000	0000000000	
X-X	34	2.884-908.0	Valve (3 Stück)	1.000	ST	0000000000	0000000000	
X	35	7.306-066.0	Cylinder head screw M10x100- 8.8-A3E IS	4.000	ST	0000000000	0000000000	
X-X	40	6.362-575.0	O-Ring seal 12,42 KOMPL	1.000	ST	0000000000	0000000000	
X-X	41	6.362-482.0	O-Ring seal 10 x 1,5-NBR 70	1.000	ST	0000000000	0000000000	
X-X	42	4.291-009.0	Spindle	1.000	ST	0000000000	0000000000	
	43	7.306-323.0	Pan head screw M4x6 -CU2 ISO 7045-H	1.000	ST	0000000000	0000000000	
X-X	44	6.362-402.0	O-Ring seal 11,0 X 1,3-NBR 70	1.000	ST	0000000000	0000000000	
	45	5.321-263.0	Handhold	1.000	ST	0000000000	0000000000	
X-X	46	5.110-368.0	Sleeve	1.000	ST	0000000000	0000000000	
	47	5.442-503.0	Piece of tube	1.000	ST	0000000000	0000000000	
X-X	48	6.362-483.0	O-Ring seal 17,0 X 2,5-NBR 80	3.000	ST	0000000000	0000000000	
X-X	49	5.583-060.0	Valve screw	2.000	ST	0000000000	0000000000	
	50	6.362-452.0	O-Ring seal 4,0 X 1,0-NBR 70	1.000	ST	0000000000	0000000000	
X-X	52	5.581-134.0	Valve seat	1.000	ST	0000000000	0000000000	
X-X	53	6.412-604.0	Safety valve	1.000	ST	0000000000	0000000000	
X-X	55	5.583-062.0	Valve screw	1.000	ST	0000000000	0000000000	
X-X	56	7.362-003.0	Joint ring A10x13,5 -Cu DIN 7603	1.000	ST	0000000000	0000000000	

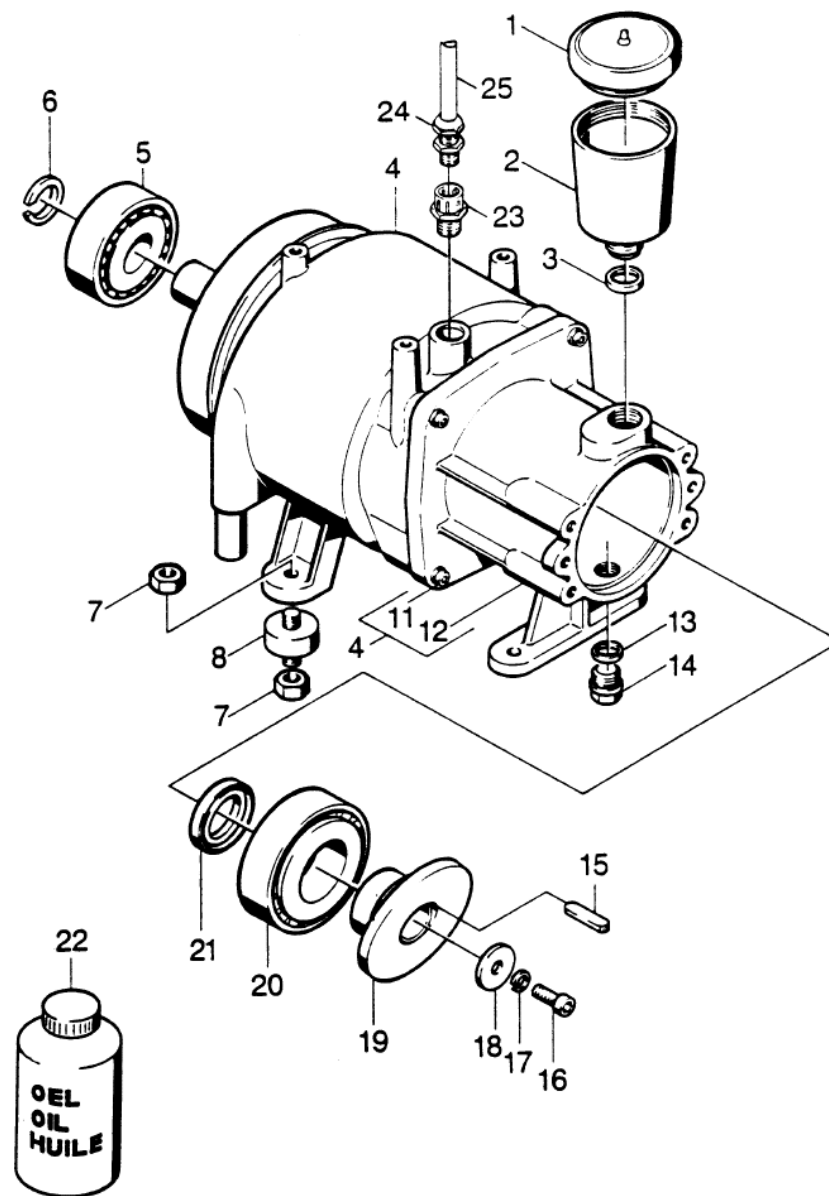
## 20 Pump set

---

ET/VT (spare/wear parts)	Pos	Material #	Name	Qty.	Unit	from ser.nr.	up to ser.nr.	Footnote text
X-X	57	6.389-635.0	High pressure hose pressure gauge	1.000	ST	0000000000	0000000000	
X-X	59	2.880-283.0	PUMP SET HDS 755/760	1.000	ST	0000000000	0000000000	

**59 PUMP SET HDS 755/760 (2.880-283.0)**

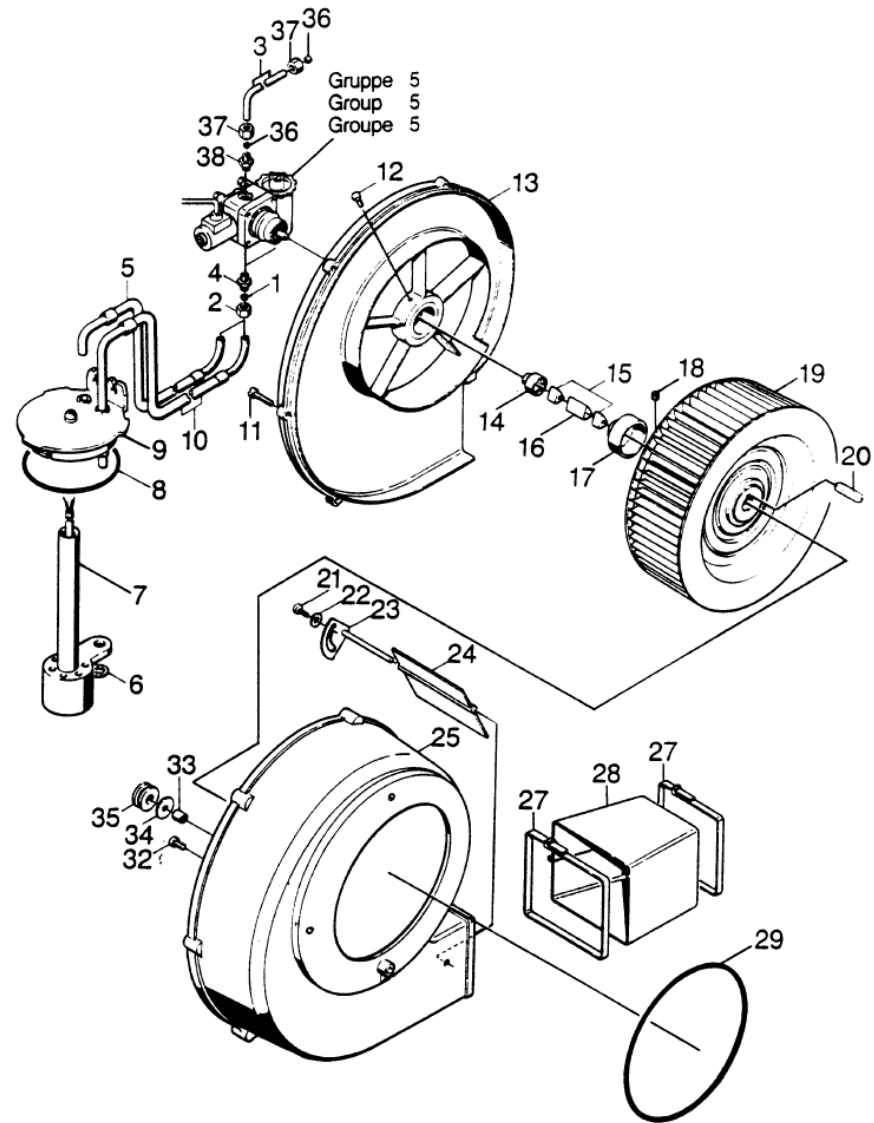
ET/VT (spare/wear parts)	Pos	Material #	Name	Qty.	Unit	from ser.nr.	up to ser.nr.
X	10	4.580-117.0	Valve complete	6.000	ST	0000000000	0000000000
X-X	20	5.115-224.0	Washer	3.000	ST	0000000000	0000000000
X-X	30	6.362-448.0	O-Ring seal 100,0 X 1,78	1.000	ST	0000000000	0000000000
X-X	40	6.362-484.0	O-Ring seal 34,65X 1,78	3.000	ST	0000000000	0000000000
X-X	50	6.365-052.0	Grooved ring 20X28X6/8	3.000	ST	0000000000	0000000000
X-X	60	6.365-053.0	Compact seal 20X30X6	3.000	ST	0000000000	0000000000
X-X	70	6.365-330.0	Grooved ring	3.000	ST	0000000000	0000000000
X-X	80	7.362-009.0	Joint ring A18x22 -Cu DIN 7603	1.000	ST	0000000000	0000000000





### 30 Motor

ET/VT (spare/wear parts)	Pos	Material #	Name	Qty.	Unit	from ser.nr.	up to ser.nr.
X-X	1	5.063-189.0	Cover	1.000	ST	0000000000	0000000000
X-X	2	5.070-048.0	Box	1.000	ST	0000000000	0000000000
X-X	3	5.363-100.0	Joint ring	1.000	ST	0000000000	0000000000
	4	6.611-482.0	Electric motor 5,2KW -380/220V	1.000	ST	0000000000	0000000000
X-X	5	6.401-253.0	Ball bearing 6305-2Z	1.000	ST	0000000000	0000000000
X-X	6	7.343-008.0	Locking ring 25x1,2-St-vz DIN 471	1.000	ST	0000000000	0000000000
X-X	7	7.311-510.0	Hexagon nut M 8-8-A2E ISO 7040	8.000	ST	0000000000	0000000000
X-X	8	6.339-060.0	Rubber buffer M8	4.000	ST	0000000000	0000000000
X-X	11	7.306-105.0	Screw M6x30 -8.8-R3R (In6Rd)	3.000	ST	0000000000	0000000000
	12	5.060-181.0	Housing	1.000	ST	0000000000	0000000000
X-X	13	7.362-009.0	Joint ring A18x22 -Cu DIN 7603	1.000	ST	0000000000	0000000000
X	14	7.382-235.0	Screw plug M18x1,5-A-CuZn DIN 7604	1.000	ST	0000000000	0000000000
	15		Stockpiling discontinued	1.000	ST	0000000000	0000000000
X-X	16	7.306-041.0	Cylinder head screw M8x20 -8.8-A2E ISO	1.000	ST	0000000000	0000000000
	17	7.313-051.0	Spring washer 8-FST-A3E DIN 7980	1.000	ST	0000000000	0000000000
	18	7.312-261.0	Washer 8 -100HV-A3E ISO 7094	1.000	ST	0000000000	0000000000
	19	5.120-206.0	Wobble plate	1.000	ST	0000000000	0000000000
X-X	20	6.401-225.0	Taper roller bearing 41	1.000	ST	0000000000	0000000000
X-X	21	7.367-009.0	Radial shaft seal ring A35x52x7-NBR DIN	1.000	ST	0000000000	0000000000
X-X	22	6.288-016.0	Gear oil 1L	1.000	ST	0000000000	0000000000
	23	6.641-313.0	Reduction PG16/13,5	1.000	ST	0000000000	0000000000
	24	6.641-613.0	Cable gland PG13,5	1.000	ST	0000000000	0000000000
	25		Stockpiling discontinued	1.000	ST	0000000000	0000000000

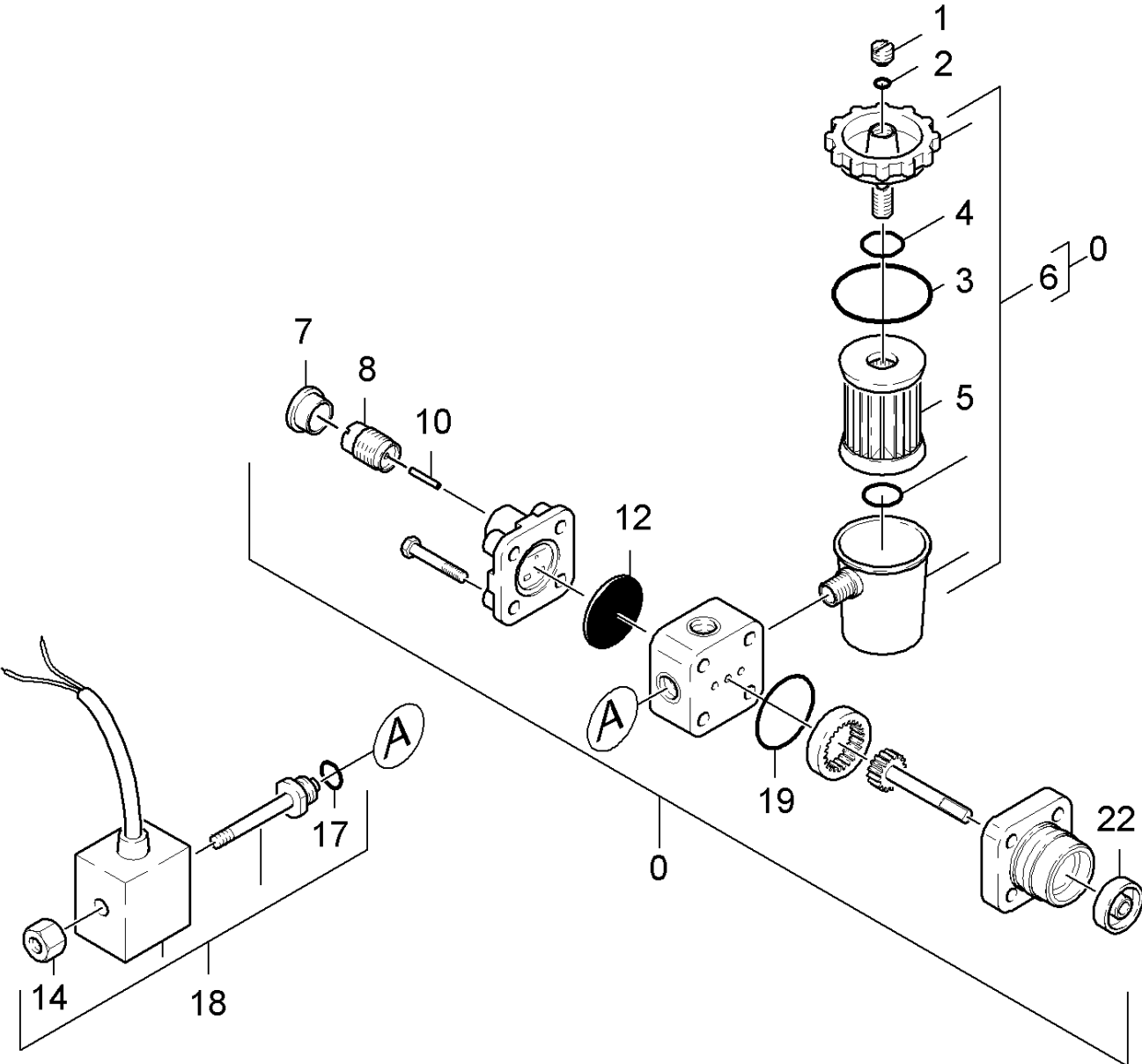


## 40 Blower

ET/VT (spare/wear parts)	Pos	Material #	Name	Qty.	Unit	from ser.nr.	up to ser.nr.
X-X	1	6.386-160.0	Cutting ring D 6-L/S	2.000	ST	0000000000	0000000000
X-X	2	6.386-346.0	Union nut A 6-L	2.000	ST	0000000000	0000000000
	3		Stockpiling discontinued	1.000	ST	0000000000	0000000000
X-X	4	6.386-181.0	Connection piece 6-L1/8NPT	2.000	ST	0000000000	0000000000
X	5	6.388-333.0	Hose assembly	1.000	ST	0000000000	0000000000
X-X	6	6.343-119.0	Lock washer	1.000	ST	0000000000	0000000000
X-X	7	6.631-439.0	Level probe	1.000	ST	0000000000	0000000000
X-X	8	6.362-474.0	O-Ring seal 68,0 X 4,0	1.000	ST	0000000000	0000000000
X	9	5.030-434.0	Moulded part	1.000	ST	0000000000	0000000000
X-X	10	6.388-334.0	Hose assembly	1.000	ST	0000000000	0000000000
	12	7.306-090.0	Screw M6x16 -8.8-R3R (In6Rd)	1.000	ST	0000000000	0000000000
	13		FAN COVER (HDS 580)	1.000	ST	0000000000	0000000000
X-X	14	6.463-008.0	Coupling element	1.000	ST	0000000000	0000000000
X-X	15	6.463-020.0	Coupling element	2.000	ST	0000000000	0000000000
X-X	16	5.471-050.0	Coupling element	1.000	ST	0000000000	0000000000
X-X	17	5.471-049.0	Coupling element	1.000	ST	0000000000	0000000000
X-X	18	7.307-407.0	Threaded pin M8x6 -Cu2 ISO 4026	1.000	ST	0000000000	0000000000
X-X	19	6.484-048.0	Blower wheel ALU	1.000	ST	0000000000	0000000000
X-X	20	7.318-002.0	Parallel key 5x5x16 -C45R DIN 6885-1	1.000	ST	0000000000	0000000000
X-X	21	7.303-077.0	Sheet metal screw ST4,8X16-ST-A2R (IN6R	1.000	ST	0000000000	0000000000
	22	7.312-278.0	Washer 5-200HV-A2E ISO7093-1	1.000	ST	0000000000	0000000000
	23	5.603-012.0	Shaft flap	1.000	ST	0000000000	0000000000
	24		Stockpiling discontinued	1.000	ST	0000000000	0000000000
	25	5.605-073.0	Housing	1.000	ST	0000000000	0000000000
X-X	27	6.388-608.0	Tightening strap	2.000	ST	0000000000	0000000000

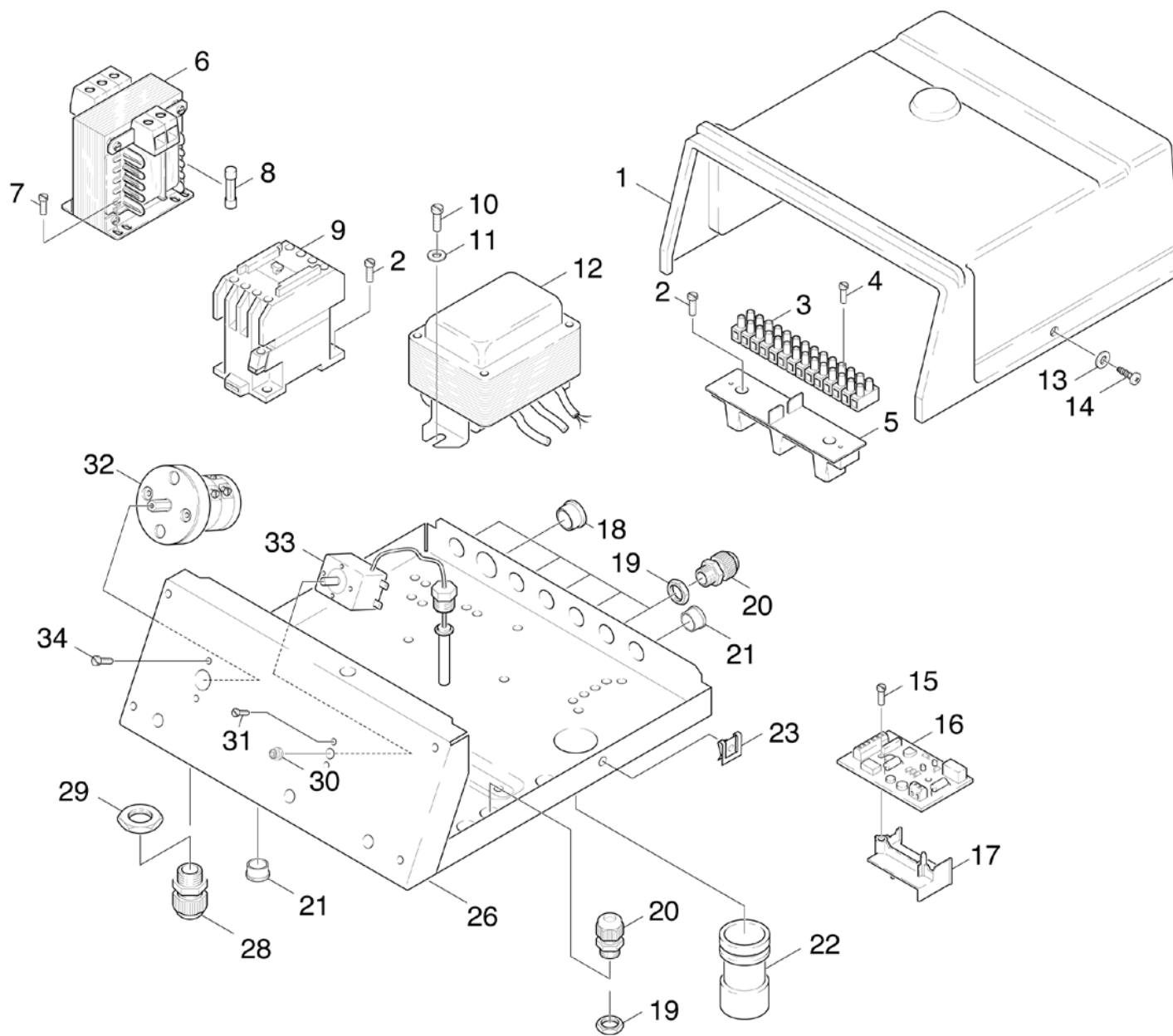
**40 Blower**

ET/VT (spare/wear parts)	Pos	Material #	Name	Qty.	Unit	from ser.nr.	up to ser.nr.
	28		Stockpiling discontinued	1.000	ST	0000000000	0000000000
	29	6.362-456.0	O-Ring seal 143,0 X 2,0 -NBR 70	1.000	ST	0000000000	0000000000
	32	7.304-386.0	Hexagonal head screw M 6x25-8.8-A2E ISO	4.000	ST	0000000000	0000000000
	33	5.110-222.0	Sleeve	4.000	ST	0000000000	0000000000
	34	5.115-233.0	Washer	4.000	ST	0000000000	0000000000
	35	5.379-008.0	Rubber ring	4.000	ST	0000000000	0000000000
X-X	36	6.389-263.0	Cutting ring d.4	2.000	ST	0000000000	0000000000
X-X	37	6.389-262.0	Union nut A 4-LL	2.000	ST	0000000000	0000000000
X	38	6.389-261.0	Screw union	1.000	ST	0000000000	0000000000



## 50 Fuel pump

ET/VT (spare/wear parts)	Pos	Material #	Name	Qty.	Unit
X-X	0	6.472-925.0	Pump oil burner only for replacement	1.000	ST
	1	6.472-107.0	Screw ventilation	1.000	ST
	2	6.472-106.0	O-Ring seal 5,0 X 1,8	1.000	ST
X-X	3	6.472-111.0	O-Ring seal 32,0 X 1,6	1.000	ST
	4	6.472-112.0	O-Ring seal 10,0 x 2,4 NBR 70	1.000	ST
X-X	5	6.472-113.0	Filter cartridge	1.000	ST
	6	6.472-123.0	Filter housing complete	1.000	ST
	7	6.472-122.0	Protecting cap	1.000	ST
	8	6.472-109.0	Housing spring	1.000	ST
	10	6.472-108.0	Pin	1.000	ST
X-X	12	6.472-128.0	Diaphragm	1.000	ST
	14	6.472-340.0	Knurled nut	1.000	ST
	17	6.472-125.0	O-Ring seal 12,0 X 1,5	1.000	ST
X-X	18	6.472-411.0	Solenoid valve	1.000	ST
X-X	19	6.472-120.0	O-Ring seal 28,5 X 1,6	1.000	ST
X	22	6.472-105.0	Seal axle	1.000	ST



## 60 Electric control box

ET/VT (spare/wear parts)	Pos	Material #	Name	Qty.	Unit	from ser.nr.	up to ser.nr.
	1		Stockpiling discontinued	1.000	ST	0000000000	0000000000
	2	7.303-033.0	Screw M4x16-ST-A2R (KOMBI-IN6RD)	4.000	ST	0000000000	0000000000
	3	6.643-249.0	Strip terminal	1.000	ZST	0000000000	0000000000
	4	7.303-064.0	Sheet metal screw ST3,5X19-ST-R2R (In6R)	2.000	ST	0000000000	0000000000
	5		Stockpiling discontinued	1.000	ST	0000000000	0000000000
	6	6.622-021.0	Control transformer 40VA	1.000	ST	0000000000	0000000000
	7	7.303-030.0	Screw M4x8 -St-P2R (In6Rd)	2.000	ST	0000000000	0000000000
X-X	8	6.644-052.0	Fuse insert slow G-2,0A	1.000	ST	0000000000	0000000000
X-X	9	6.632-356.0	Contactora LC1-D18 B7	1.000	ST	0000000000	0000000000
X	10	7.303-036.0	Screw M5x8 -St-A2R (In6Rd)	4.000	ST	0000000000	0000000000
X-X	11	7.312-276.0	Washer 6 -200HV-A2E ISO7093-1	2.000	ST	0000000000	0000000000
X-X	12	2.883-468.0	Spare parts set ignition transformer	1.000	ST	0000000000	0000000000
	13	7.312-278.0	Washer 5-200HV-A2E ISO7093-1	2.000	ST	0000000000	0000000000
X-X	14	7.303-077.0	Sheet metal screw ST4,8X16-ST-A2R (IN6R)	2.000	ST	0000000000	0000000000
	15	7.303-035.0	Screw M4x30 -St-R2R (In6Rd)	3.000	ST	0000000000	0000000000
X-X	16	4.633-058.0	Pulse generator only for replacement	1.000	ST	0000000000	0000000000
	17	5.057-043.0	Support	1.000	ST	0000000000	0000000000
	18	6.368-023.0	Protecting cap 21,7	1.000	ST	0000000000	0000000000
	19	6.641-366.0	Locknut PG 9	7.000	ST	0000000000	0000000000
X-X	20	6.641-355.0	Cable gland PG9	7.000	ST	0000000000	0000000000
	21	6.368-064.0	Drain plug	3.000	ST	0000000000	0000000000
	22		Stockpiling discontinued	1.000	ST	0000000000	0000000000
	23	6.310-034.0	Speed nut	2.000	ST	0000000000	0000000000
	26		Stockpiling discontinued	1.000	ST	0000000000	0000000000
	28	6.641-613.0	Cable gland PG13,5	1.000	ST	0000000000	0000000000



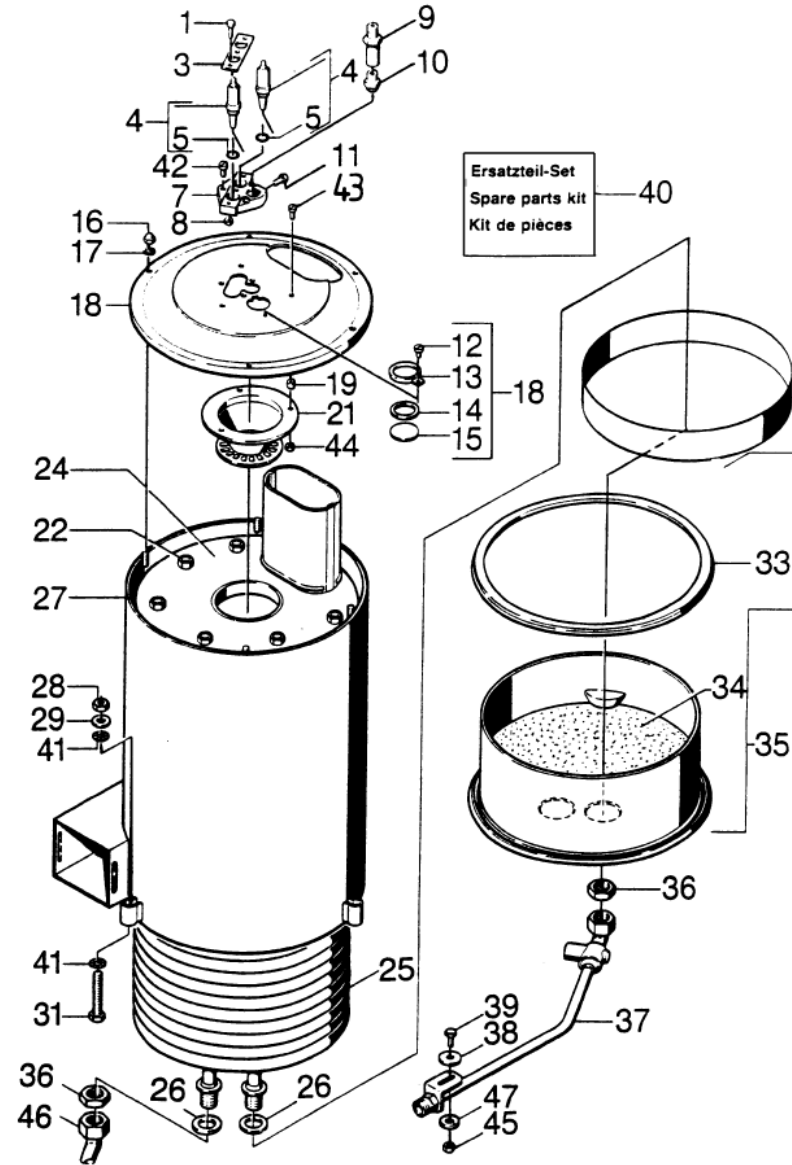
**60 Electric control box**

ET/VT (spare/wear parts)	Pos	Material #	Name	Qty.	Unit	from ser.nr.	up to ser.nr.
	29	6.641-369.0	Locknut PG13,5	1.000	ST	0000000000	0000000000
	30	5.365-152.0	Profile gasket	1.000	ST	0000000000	0000000000
	31	7.306-056.0	Screw M4x8 -8.8-R2R (In6Rd)	4.000	ST	0000000000	0000000000
X	32	6.631-081.0	Switch	1.000	ST	0000000000	0000000000
X-X	33	6.685-868.0	Thermostat	1.000	ST	0000000000	0000000000
	34	7.306-058.0	Screw M 4X 12- 8.8-R2R K-IN6RD	4.000	ST	0000000000	0000000000

## 12 Spare parts set ignition transformer (2.883-468.0)

---

ET/VT (spare/wear parts)	Pos	Material #	Name	Qty.	Unit	from ser.nr.	up to ser.nr.
	10	6.622-157.0	Ignition transformer 400V 50Hz	1.000	ST	0000000000	0000000000
X-X	20	6.647-518.0	Ignition cable	1.000	ST	0000000000	0000000000



## 70 Flow heater

ET/VT (spare/wear parts)	Pos	Material #	Name	Qty.	Unit	from ser.nr.	up to ser.nr.	Footnote text
	1	7.306-077.0	Screw M5x16 -8.8-R2R (In6Rd)	3.000	ST	0000000000	0000000000	
	3	5.004-228.0	Strap	1.000	ST	0000000000	0000000000	
X-X	4	2.880-177.0	Spare part set ignition electrode	1.000	ST	0000000000	0000000000	
X-X	5	7.362-004.0	Joint ring A12x15,5 -Cu DIN 7603	2.000	ST	0000000000	0000000000	
	7	5.668-001.0	Spark holder	1.000	ST	0000000000	0000000000	
X-X	8	7.311-037.0	Hexagon nut M 5-CU2 ISO 4032	3.000	ST	0000000000	0000000000	
	9	5.667-048.0	Nozzle holder	1.000	ST	0000000000	0000000000	
X-X	10	6.415-530.0	Nozzle 60GRAD H	1.000	ST	0000000000	0000000000	
X	11	7.306-443.0	Cylinder head screw M5x12-4.8-A2E ISO 1	7.000	ST	0000000000	0000000000	
	12	7.303-136.0	Sheet metal screw ST3,5X 6,5-ST-R2R (IN	1.000	ST	0000000000	0000000000	
X	13	5.000-590.0	Plate	1.000	ST	0000000000	0000000000	
X-X	14	5.364-100.0	Flat gasket	1.000	ST	0000000000	0000000000	
X-X	15	6.278-014.0	Glass pane	1.000	ST	0000000000	0000000000	
	16	7.311-380.0	Cap nut M6 -6-A2E DIN 1587	3.000	ST	0000000000	0000000000	
X	17	7.312-167.0	Toothed lock washer A6,4-FSt-A3E DIN 67	2.000	ST	0000000000	0000000000	
	18	4.654-091.0	Cover D.K.	1.000	ST	0000000000	0000000000	
	19	5.025-366.0	Tube	3.000	ST	0000000000	0000000000	
	21	4.663-060.0	Burner cage	1.000	ST	0000000000	0000000000	
	22	7.311-039.0	Hexagon nut M 6-CU 2 ISO 4032	4.000	ST	0000000000	0000000000	
	24	4.663-057.0	Burner cage	1.000	ST	0000000000	0000000000	
	25	4.680-130.0	Heating coil VA	1.000	ST			STAINLESS STEEL CONSTRUCTION
X-X	25	4.680-126.0	Heating coil	1.000	ST	0000000000	0000000000	
X-X	26	5.365-068.0	Profile gasket	2.000	ST	0000000000	0000000000	
	27	4.652-055.0	Outer covering	1.000	ST	0000000000	0000000000	
X	28	7.311-511.0	Hexagon nut M10-8-A2E ISO 7040	3.000	ST	0000000000	0000000000	

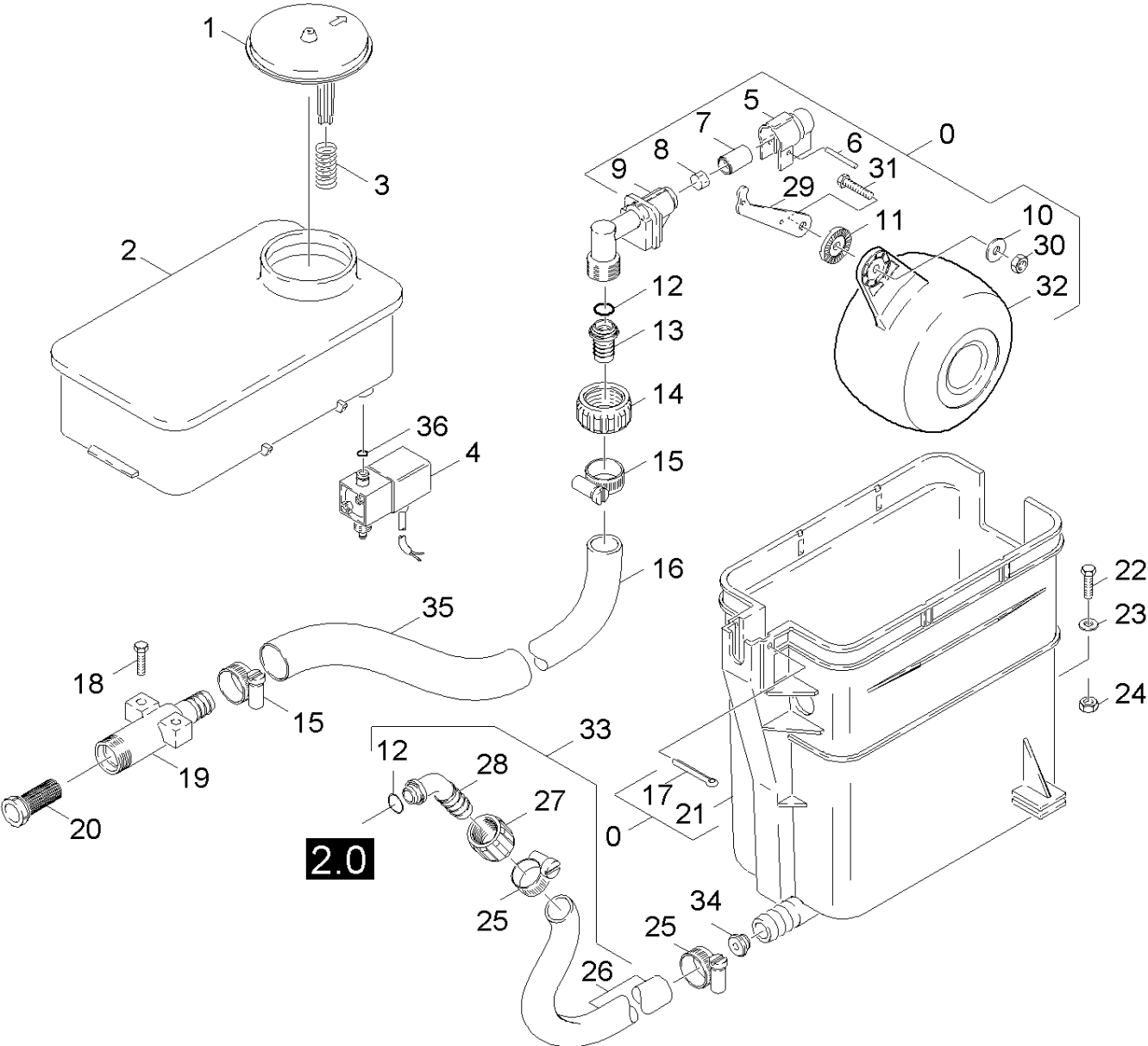
## 70 Flow heater

ET/VT (spare/wear parts)	Pos	Material #	Name	Qty.	Unit	from ser.nr.	up to ser.nr.	Footnote text
X-X	29	7.312-005.0	Washer 10-200HV-A3E ISO 7090	3.000	ST	0000000000	0000000000	
	31	7.304-422.0	Hexagonal head screw M10x65-8.8-A3E ISO	3.000	ST	0000000000	0000000000	
X-X	33	6.366-009.0	Seal string	1.000	ST	0000000000	0000000000	
	34	2.889-061.0	Refractory material 8kg	1.000	ST	0000000000	0000000000	
X-X	35	4.655-044.0	Bottom pressure boiler	1.000	ST	0000000000	0000000000	
X-X	36	7.311-155.0	Hexagon nut M22x1,5 -Cu2 DIN 936	2.000	ST	0000000000	0000000000	
X-X	37	4.420-910.0	Pipelines	1.000	ST	0000000000	0000000000	
	38		Stockpiling discontinued	1.000	ST	0000000000	0000000000	
	39	7.306-090.0	Screw M6x16 -8.8-R3R (In6Rd)	2.000	ST	0000000000	0000000000	
	40		Stockpiling discontinued	1.000	ST	0000000000	0000000000	
	41	7.312-160.0	Toothed lock washer A10,5 -FSt-A3E DIN	2.000	ST	0000000000	0000000000	
X	42	7.306-443.0	Cylinder head screw M5x12-4.8-A2E ISO 1	3.000	ST	0000000000	0000000000	
	43	7.306-078.0	Screw M5x20 -8.8-R2R (In6Rd)	3.000	ST	0000000000	0000000000	
X-X	44	7.311-002.0	Hexagon nut M5 -8-A2E ISO 4032	3.000	ST	0000000000	0000000000	
	45	7.311-003.0	Hexagon nut M6 -8-A2E ISO 4032	1.000	ST	0000000000	0000000000	
X-X	46	4.420-912.0	Pipelines	1.000	ST	0000000000	0000000000	

#### 4 Spare part set ignition electrode (2.880-177.0)

---

ET/VT (spare/wear parts)	Pos	Material #	Name	Qty.	Unit	from ser.nr.	up to ser.nr.
	10	5.826-020.0	Ignition electrode	1.000	ST	0000000000	0000000000
X-X	20	7.362-004.0	Joint ring A12x15,5 -Cu DIN 7603	1.000	ST	0000000000	0000000000



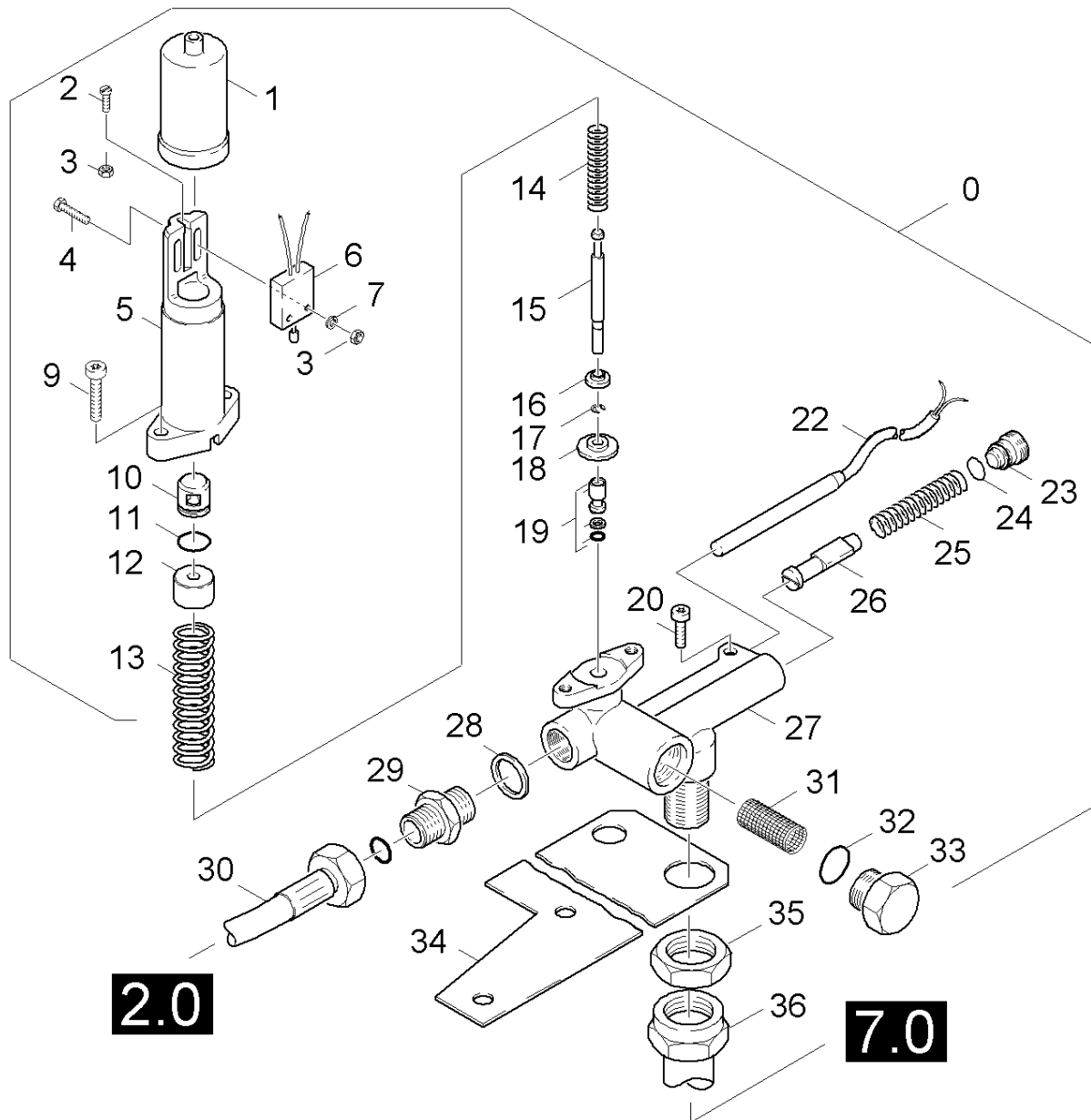
## 80 Float chest

ET/VT (spare/wear parts)	Pos	Material #	Name	Qty.	Unit	from ser.nr.	up to ser.nr.	Footnote text
X-X	0	3.593-060.0	Float valve	1.000	ST	0000000000	0000000000	
X-X	1	5.063-226.0	Cover	1.000	ST	0000000000	0000000000	
X-X	2	4.070-094.0	Tank	1.000	ST	0000000000	0000000000	
X-X	3	5.332-001.0	Helical spring	1.000	ST	0000000000	0000000000	
X-X	4	6.685-210.0	Solenoid valve	1.000	ST	0000000000	0000000000	
X-X	5	5.394-066.0	Protection part	1.000	ST	0000000000	0000000000	
X-X	6	7.316-004.0	Bolt A 3x25 -CuZn ISO 2340	1.000	ST	0000000000	0000000000	
X-X	7	5.584-026.0	Valve pin	1.000	ST	0000000000	0000000000	
X-X	8	5.364-095.0	Flat gasket	1.000	ST	0000000000	0000000000	
X-X	9	5.587-103.0	Valve housing	1.000	ST	0000000000	0000000000	
	10	7.312-279.0	Washer 6-CuZn ISO 7093-1	1.000	ST	0000000000	0000000000	
X-X	11	5.115-158.0	Washer	1.000	ST	0000000000	0000000000	
X-X	12	6.362-078.0	O-Ring seal 13,3x2,4	2.000	ST	0000000000	0000000000	
X-X	13	5.443-224.0	Hose stem	1.000	ZST	0000000000	0000000000	
X-X	14	5.310-061.0	Nut R 3/4"	1.000	ST	0000000000	0000000000	
X-X	15	6.388-547.0	Hose clip	2.000	ST	0000000000	0000000000	
X-X	16	6.388-719.0	Hose DN17	1.000	M	0000000000	0000000000	
X	17	7.316-432.0	Cotter 4x50 -St-A2E ISO 1234	1.000	ST	0000000000	0000000000	
	18	7.306-090.0	Screw M6x16 -8.8-R3R (In6Rd)	1.000	ST	0000000000	0000000000	
	19	5.427-075.0	Manifold	1.000	ST	0000000000	0000000000	
X-X	20	6.414-141.0	Strainer	1.000	ST	0000000000	0000000000	
	21	5.070-076.0	Tank	1.000	ST	0000000000	0000000000	
	22	7.303-079.0	Sheet metal screw ST4,8X25-ST-A2R (IN6R	2.000	ST	0000000000	0000000000	
	23	7.312-278.0	Washer 5-200HV-A2E ISO7093-1	2.000	ST	0000000000	0000000000	
	24	6.310-028.0	Snap nut 4,8	2.000	ST	0000000000	0000000000	



**80 Float chest**

ET/VT (spare/wear parts)	Pos	Material #	Name	Qty.	Unit	from ser.nr.	up to ser.nr.	Footnote text
X-X	25	6.641-474.0	Cable tape 8-210	2.000	ST	0000000000	0000000000	
X-X	26	6.388-721.0	Hose 19x4	1.000	ST	0000000000	0000000000	
X-X	27	5.310-062.0	Nut	1.000	ST	0000000000	0000000000	
X-X	28	5.443-211.0	Hose stem	1.000	ST	0000000000	0000000000	
X-X	29	5.481-029.0	Lever	1.000	ST	0000000000	0000000000	
X-X	30	7.311-422.0	Hexagon nut M 6-1.4305 ISO 10511	1.000	ST	0000000000	0000000000	
X-X	31	7.306-194.0	Screw M6x20 -A2-70 (In6Rd)	1.000	ST	0000000000	0000000000	
X-X	32	5.585-004.0	Float	1.000	ST	0000000000	0000000000	
	33	4.440-267.0	Hose	1.000	ST	0000000000	0000000000	
	34	5.112-189.0	Bush	1.000	ST	0000000000	0000000000	
X-X	35	6.388-719.0	Hose DN17	1.000	M	0000000000	0000000000	TO ORDER AS CUT GOODS
X	36	6.362-113.0	O-Ring seal 6,0 x 2,0 NBR 70	1.000	ST	0000000000	0000000000	



## 90 Safety system

ET/VT (spare/wear parts)	Pos	Material #	Name	Qty.	Unit	from ser.nr.	up to ser.nr.
	0	4.749-085.0	Safety system	1.000	ST	0000000000	0000000000
X-X	1	5.394-060.0	Protection part	1.000	ST	0000000000	0000000000
	2	7.306-406.0	Cylinder head screw M3x16-4.8-A2E ISO 1	1.000	ST	0000000000	0000000000
X	3	7.311-000.0	Hexagon nut M3 -8-A2E ISO 4032	3.000	ST	0000000000	0000000000
X-X	4	7.306-055.0	Screw M3x20 -8.8-R2R (In6Rd)	2.000	ST	0000000000	0000000000
X-X	5	5.060-099.0	Housing	1.000	ST	0000000000	0000000000
X-X	6	6.631-125.0	Micro switch	1.000	ST	0000000000	0000000000
X-X	7	7.313-000.0	Spring washer B 3-FSt-A3E DIN 127	2.000	ST	0000000000	0000000000
X-X	9	7.306-105.0	Screw M6x30 -8.8-R3R (In6Rd)	2.000	ST	0000000000	0000000000
X-X	10	5.553-046.0	Piston	1.000	ST	0000000000	0000000000
X-X	11	6.362-169.0	O-Ring seal 12,0 X 2,0	1.000	ST	0000000000	0000000000
	12	5.112-347.0	Bush	1.000	ST	0000000000	0000000000
X-X	13	5.332-069.0	Helical spring	1.000	ST	0000000000	0000000000
X-X	14	5.332-070.0	Helical spring	1.000	ST	0000000000	0000000000
X-X	15	5.107-023.0	Bar	1.000	ST	0000000000	0000000000
X-X	16	5.112-094.0	Bush	1.000	ST	0000000000	0000000000
X	17	7.343-203.0	Lock washer 4-A2 DIN 6799	1.000	ST	0000000000	0000000000
X-X	18	5.115-147.0	Washer	1.000	ST	0000000000	0000000000
X-X	19	4.553-025.0	Piston	1.000	ST	0000000000	0000000000
	20	7.306-090.0	Screw M6x16 -8.8-R3R (In6Rd)	1.000	ST	0000000000	0000000000
X-X	22	2.880-194.0	Reed switch replacement	1.000	ST	0000000000	0000000000
X-X	23	5.305-162.0	Shaped screw	1.000	ST	0000000000	0000000000
X-X	24	6.362-482.0	O-Ring seal 10 x 1,5-NBR 70	1.000	ST	0000000000	0000000000
X-X	25	5.332-057.0	Helical spring	1.000	ST	0000000000	0000000000
X-X	26	4.553-022.0	Piston	1.000	ST	0000000000	0000000000

**90 Safety system**

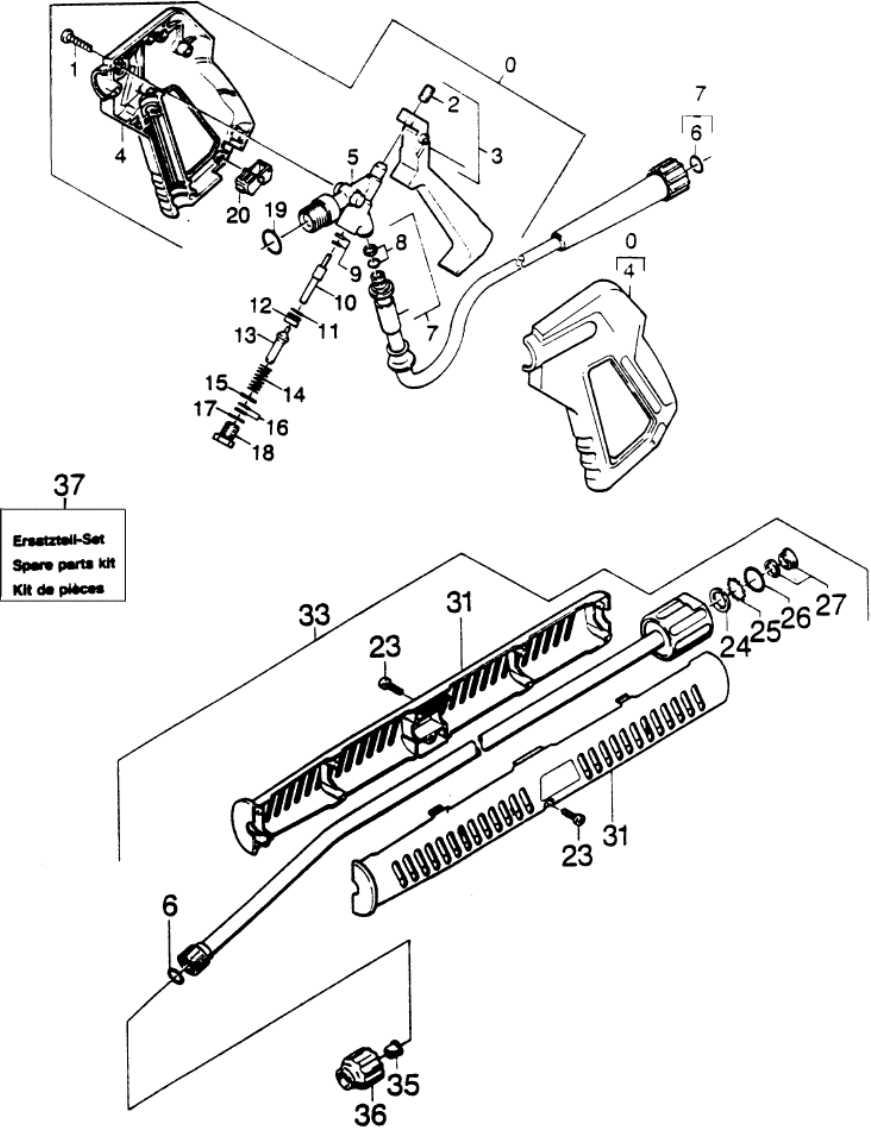
ET/VT (spare/wear parts)	Pos	Material #	Name	Qty.	Unit	from ser.nr.	up to ser.nr.
X-X	27	5.605-131.0	Housing	1.000	ST	0000000000	0000000000
X-X	28	7.362-009.0	Joint ring A18x22 -Cu DIN 7603	1.000	ST	0000000000	0000000000
X	29	7.386-476.0	Connection piece A12-M18x1,5-Ms DIN 763	1.000	ST	0000000000	0000000000
X-X	30	6.388-859.0	High pressure hose DN 8	1.000	ST	0000000000	0000000000
X-X	31	6.414-111.0	Strainer	1.000	ST	0000000000	0000000000
X-X	32	6.362-160.0	O-Ring seal 17,3 X 2,4	1.000	ST	0000000000	0000000000
X	33	5.411-059.0	Screw plug	1.000	ST	0000000000	0000000000
	34	5.042-261.0	Holder	1.000	ST	0000000000	0000000000
X-X	35	7.311-155.0	Hexagon nut M22x1,5 -Cu2 DIN 936	1.000	ST	0000000000	0000000000
X-X	36	4.420-912.0	Pipelines	1.000	ST	0000000000	0000000000

**22 Reed switch replacement (2.880-194.0)**

---

Pos	Material #	Name	Qty.	Unit	from ser.nr.	up to ser.nr.
10	6.631-105.0	Reed switch	1.000	ST	0000000000	0000000000

---



**100 Accessories**

ET/VT (spare/wear parts)	Pos	Material #	Name	Qty.	Unit	from ser.nr.	up to ser.nr.
	0	4.775-134.0	Hand trigger gun	1.000	ST	0000000000	0000000000
	1	7.303-096.0	Screw 4x22 -ST-10.9-R2R (IN6RD)	7.000	ST	0000000000	0000000000
	2	7.307-417.0	Threaded pin M8x16 -45H-A2E ISO 4026	1.000	ST	0000000000	0000000000
	3	4.481-056.0	Lever	1.000	ST	0000000000	0000000000
	4	5.321-297.0	Handhold few	1.000	ST	0000000000	0000000000
	5	5.427-134.0	Manifold	1.000	ST	0000000000	0000000000
X-X	6	2.880-990.0	Spare part set O-Ring 5x -Kaercher	1.000	ST	0000000000	0000000000
X-X	7	6.391-351.0	Hose assembly only for replacement DN8 4	1.000	ST	0000000000	0000000000
X-X	8	4.363-691.0	O-Ring seal kpl. -nur fuer Ersatz-	1.000	ST	0000000000	0000000000
X-X	9	6.362-571.0	O-Ring seal complete /1ST.-R	1.000	ST	0000000000	0000000000
	10	5.107-097.0	Bar	1.000	ST	0000000000	0000000000
	11	6.362-664.0	O-Ring seal 1,1 X 1,78 -NBR 90	1.000	ST	0000000000	0000000000
	12	5.581-244.0	Valve seat	1.000	ST	0000000000	0000000000
	13	5.582-089.0	Valve disc	1.000	ST	0000000000	0000000000
	14	5.332-254.0	Helical spring	1.000	ST	0000000000	0000000000
	15	5.115-444.0	Washer	1.000	ST	0000000000	0000000000
X-X	16	6.362-467.0	O-Ring seal complete 1ST.-R.	1.000	ST	0000000000	0000000000
	17	6.362-673.0	O-Ring seal 14,0 X 1,78	1.000	ST	0000000000	0000000000
	18	5.411-080.0	Screw plug	1.000	ST	0000000000	0000000000
	19	6.362-559.0	O-Ring seal 18,77X 1,78	1.000	ST	0000000000	0000000000
	20	5.481-088.0	Lever	1.000	ST	0000000000	0000000000
	23	6.303-025.0	Oval head screw 4,2x16-St-vz	2.000	ST	0000000000	0000000000
	24	6.362-529.0	Joint ring 12x1,5	1.000	ST	0000000000	0000000000
X-X	25	7.401-921.0	Sphere 4 G20 -1.4034 DIN 5401	12.000	ST	0000000000	0000000000
X-X	26	6.362-524.0	O-Ring seal 17,0 X 1,5	1.000	ST	0000000000	0000000000

**100 Accessories**

ET/VT (spare/wear parts)	Pos	Material #	Name	Qty.	Unit	from ser.nr.	up to ser.nr.
X-X	27	4.363-692.0	Grooved ring kpl. -nur fuer Ersatz-	1.000	ST	0000000000	0000000000
	31	5.321-150.0	HANDLE (PART NO=ONE HALF)	2.000	ST	0000000000	0000000000
X-X	33	4.760-660.0	Jet pipe packaged only for replacement	1.000	ST	0000000000	0000000000
X-X	35	2.883-401.0	Power nozzle 25055	1.000	ST	0000000000	0000000000
X-X	36	5.401-129.0	Screw connector part	1.000	ST	0000000000	0000000000
	37	2.883-175.0	HAND TRIGGER GUN	1.000	ST	0000000000	0000000000



**35 Power nozzle 25055 (2.883-401.0)**

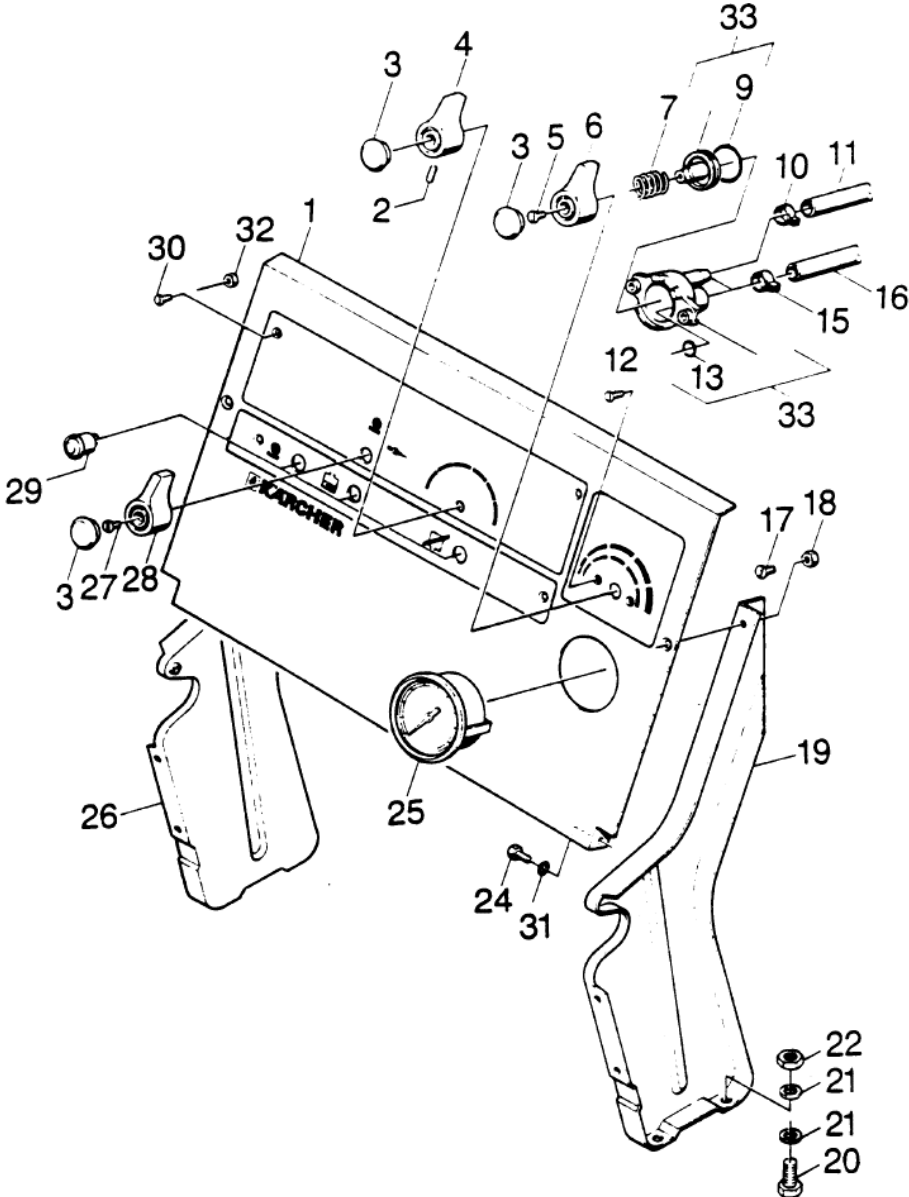
---

Pos	Material #	Name	Qty.	Unit
2	7.362-501.0	O-Ring seal 10x2 EPDM 70 DIN 3770	1.000	ST

---

**37 HAND TRIGGER GUN (2.883-175.0)**

ET/VT (spare/wear parts)	Pos	Material #	Name	Qty.	Unit	from ser.nr.	up to ser.nr.
	10	5.115-444.0	Washer	1.000	ST	0000000000	0000000000
	20	5.332-254.0	Helical spring	1.000	ST	0000000000	0000000000
	30	5.581-132.0	Valve seat	1.000	ST	0000000000	0000000000
	40	5.582-089.0	Valve disc	1.000	ST	0000000000	0000000000
	50	6.288-072.0	Silicon grease	1.000	ST	0000000000	0000000000
	60	6.303-024.0	Oval head screw 4,2x22-ST-VERZ	7.000	ST	0000000000	0000000000
X-X	70	6.362-467.0	O-Ring seal complete 1ST.-R.	1.000	ST	0000000000	0000000000
	80	6.362-559.0	O-Ring seal 18,77X 1,78	1.000	ST	0000000000	0000000000
X-X	90	6.362-571.0	O-Ring seal complete /1ST.-R	1.000	ST	0000000000	0000000000
	100	6.362-664.0	O-Ring seal 1,1 X 1,78 -NBR 90	1.000	ST	0000000000	0000000000
	110	6.362-673.0	O-Ring seal 14,0 X 1,78	1.000	ST	0000000000	0000000000



## 110 Control panel

ET/VT (spare/wear parts)	Pos	Material #	Name	Qty.	Unit	from ser.nr.	up to ser.nr.	Footnote text
	1		Stockpiling discontinued	1.000	ST	0000000000	0000000000	
X-X	2	7.307-181.0	Threaded pin M5x10-14H-A2E ISO 7434	1.000	ST	0000000000	0000000000	
X-X	3	5.132-010.0	Plug	3.000	ST	0000000000	0000000000	
X-X	4	5.321-026.0	Handhold	1.000	ST	0000000000	0000000000	
	5	7.305-023.0	Countersunk screw M4x16 -4.8-A2E ISO 20	1.000	ST	0000000000	0000000000	
X-X	6	5.321-023.0	CONTROL KNOB	1.000	ST	0000000000	0000000000	
X-X	7	5.332-028.0	Helical spring	1.000	ST	0000000000	0000000000	
X-X	9	6.362-385.0	O-Ring seal 26,0 X 2,5-NBR 70	1.000	ST	0000000000	0000000000	
X-X	10	6.388-515.0	Hose clip	1.000	ST	0000000000	0000000000	
X-X	11	6.388-194.0	Hose DN 7	1.000	M	0000000000	0000000000	TO ORDER AS CUT GOODS
	12	7.305-255.0	Countersunk screw M 4x12-A2-70-sw ISO70	2.000	ST	0000000000	0000000000	
X-X	13	6.362-386.0	O-Ring seal 5,0 x 1,5-NBR 80	1.000	ST	0000000000	0000000000	
X-X	15	6.388-559.0	Hose clip	2.000	ST	0000000000	0000000000	
X-X	16	6.388-225.0	Hose DN 7	2.000	M	0000000000	0000000000	
X	17	7.305-599.0	Countersunk screw M 5x10-A2-70-sw ISO 7	2.000	ST	0000000000	0000000000	
X-X	18	7.311-421.0	Hexagon nut M 5-04-A2E ISO 10511	8.000	ST	0000000000	0000000000	
	19	5.052-013.0	Stand right	1.000	ST	0000000000	0000000000	
	20	7.304-395.0	Hexagonal head screw M8x16-8.8-A2E ISO	4.000	ST	0000000000	0000000000	
X	21	7.313-004.0	Spring washer B 8-FSt-A3E DIN 127	8.000	ST	0000000000	0000000000	
X-X	22	7.311-004.0	Hexagon nut M8 -8-A3E ISO 4032	4.000	ST	0000000000	0000000000	
X-X	24	7.303-038.0	Screw M5x12 -St-P2R (In6Rd)	2.000	ST	0000000000	0000000000	
	25	6.421-075.0	Pressure gauge O-250 BAR	1.000	ST	0000000000	0000000000	
	26	5.052-012.0	Stand left	1.000	ST	0000000000	0000000000	
X-X	27	7.306-415.0	Cylinder head screw M3,5x12-4.8-A2E ISO1	1.000	ST	0000000000	0000000000	
X	28	5.321-328.0	Handhold	1.000	ST	0000000000	0000000000	

**110 Control panel**

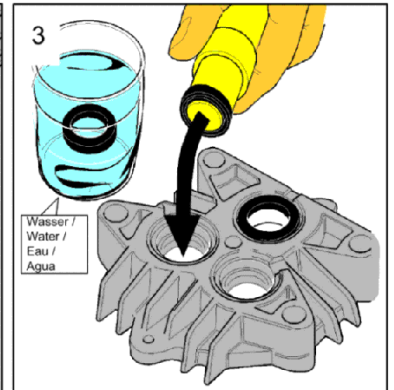
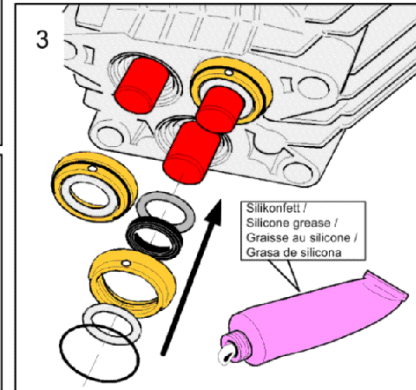
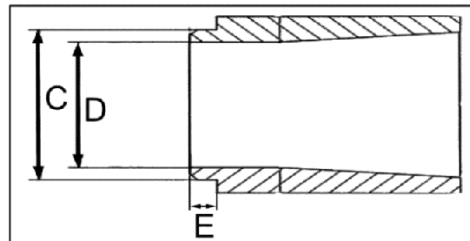
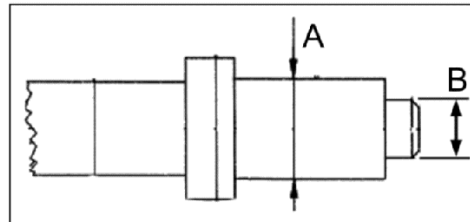
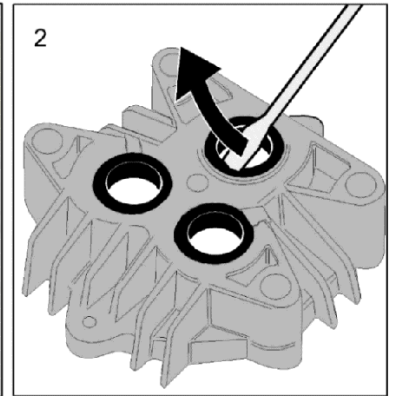
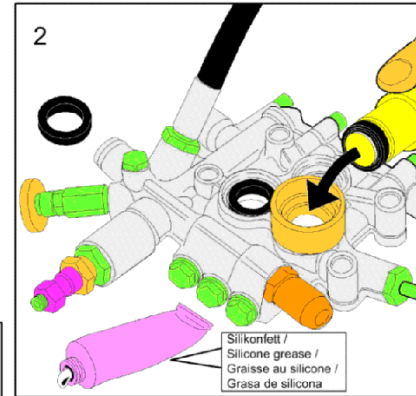
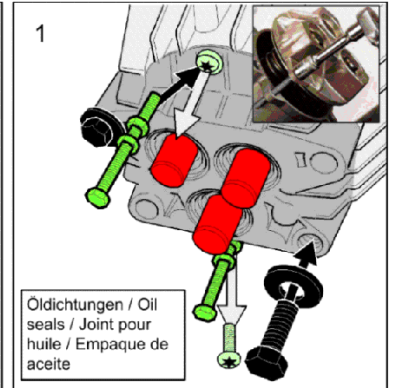
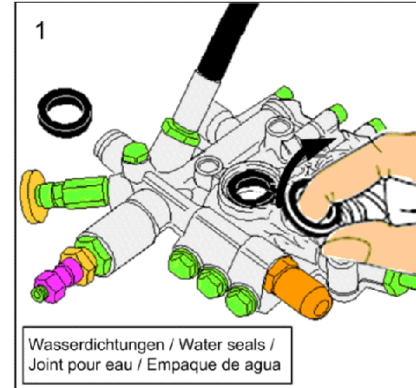
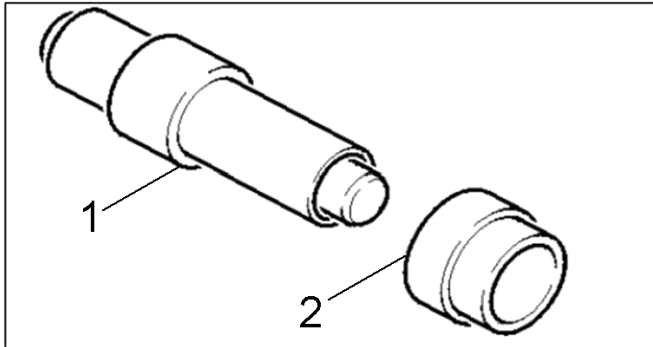
ET/VT (spare/wear parts)	Pos	Material #	Name	Qty.	Unit	from ser.nr.	up to ser.nr.	Footnote text
	29	6.651-234.0	Pilot lamp red	3.000	ST	0000000000	0000000000	
	31	7.312-165.0	Toothed lock washer A6,4-FST-PH DIN 679	12.000	ST	0000000000	0000000000	
X-X	33	4.580-064.0	Valve	1.000	ST	0000000000	0000000000	

**120 Special tools**

---

Pos	Name	Qty.	Unit
10	Tool sleeve grooved rings -Piston D20mm	1.000	ST

---



**10 Tool sleeve grooved rings -Piston D20mm**

---

Pos	Material #	Name	Qty.	Unit
2	5.901-135.0	Fitting case C=37,5;D=27,7;E=13,5mm	1.000	ST

---