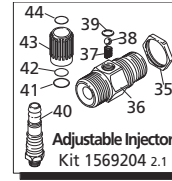
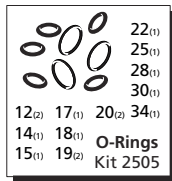
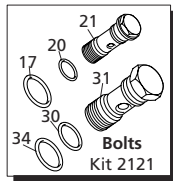
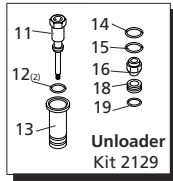


**Repair Kits**



Pos	Code	Description	Qty	Pos	Code	Description	Qty	Legend
1	1560580	Cap	1	36	1560530	Injector body 3/8" G 2.1	■ 1	3/B
2	540290	Bolt M8x25	1	37	1560520	Spring	■ 1	For ●
3	1660210	Nut M8	1	38	1250280	Ball	■ 1	AR20992
4	1560400	Unloader knob	1	39	480480	O-Ring ø4.48x1.78	■ 1	AR24760
5	1560420	Bolt	(310 in/lbs) 1	40	1560650	Hose barb (adjustable)	(35 in/lbs) ■ 1	AR21669
6	1080070	Pin	1	41	800560	O-Ring ø8.73x1.78	■ 1	AR24763
7	2260330	Spring guide	1	42	480560	O-Ring ø6.75x1.78	■ 1	
8	2260140	Upper plate	1	43	1560670	Detergent regulator knob	■ 1	
9	1560350	Spring	1	44	1560660	Ring	■ 1	
10	2260340	Lower plate	1					
11	2260060	Piston	1					
12	2260100	O-Ring ø6.02x2.62	(90 sh) 2					
13	2260040	Piston guide	1					
14	740290	O-Ring ø14x1.78	1					
15	394280	O-Ring ø12.42x1.78	1					
16	2761290	By-pass jet	(26 in/lbs) 1					
17	2260190	O-Ring ø20.29x2.62	1					
18	2260080	Seat	1					
19	1260740	O-Ring ø10.77x2.62	1					
20	390080	O-Ring ø11.91x2.62	1					
21	1540272	Thread bolt 3/8" G	(265 in/lbs) 1					
22	1560150	O-Ring ø5.94x3.53	1					
23	1560100	Shutter valve	1					
24	1560140	Spring	1					
25	180101	O-Ring ø17.5x2	1					
26	1560111	Adaptor 3/8" G - Steel	(310 in/lbs) 1					
27	2260170	Valve housing	1					
28	390080	O-Ring ø11.91x2.62	1					
29	1540440	By-pass housing 1/2" NPT	1					
	1540470	By-pass housing 1/2" G	1					
30	880270	O-Ring ø17.17x1.78	1					
31	2260420	Inlet bolt 1/2" G	(354 in/lbs) 1					
32	480440	O-Ring ø17.13x2.62	1					
33	1540050	Suction fitting	(354 in/lbs) 1					
34	1540630	O-Ring ø23.47x2.62	1					
35	1560510	Lock nut	■ 1					

**DESIGNED FOR  
XM AND RK PUMPS  
UP TO 4000 PSI**