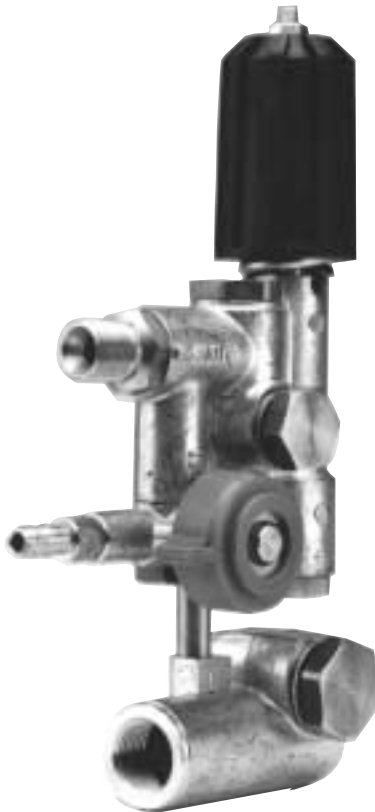


Models ZKW2.1, ZKW2.1L, ZKW2.2L

TRAPPED PRESSURE CONTROL SET UNLOADER

with Chemical Injector



FEATURES

- Reduces Cost – Eliminates the need for fittings and bypass hose.
- Compact Design – Features forged brass body and hardware.
- Versatile – Mounts in seconds to either side of pump manifold.
- Adjustable Unloader Valve – Trapped pressure type with internal bypass system
- Built-In Chemical Injector – Includes variable metering adjustment.

SPECIFICATIONS

Flow Range:	ZKW2.1, ZKW2.1L	2.9-4.5 GPM
	ZKW2.2L	4.5-6.0 GPM
Maximum Pressure	3000 PSI	
Maximum Temperature	200° F	
Port Sizes:	Inlet	1/2-14 BSPP - F
	Outlet	3/8-19 BSPP - M
Chemical Inlet	5/16 in. I.D. Hose	
Weight	4 lb.	
Dimensions	8.5" x 2.0" x 5.0"	

General Pump recommends using a safety relief device in conjunction with this unloader valve when installed on a positive displacement pump. General Pump is not liable and assumes no responsibility for this valve when used in a customer's high pressure system.

Model ZKW2.1, ZKW2.1L

2.9-4.5 GPM

Model ZKW2.1
used on pump models:

TS1371, TT1411, TT1611, TT9351,
TT9441, T9971, All EZ Pumps

Model ZKW2.1L
used on pump models:

T811, TS1011, TS1311, TS1331, TS1511,
TS1711, TS2011, T9131, T9211

Model ZKW2.2L

4.5-6.0 GPM

Model ZKW2.2L
used on pump models:

T821, T921, T1021, T1321, T1621, T9121,
T9161, TS821, TS921, TS1321, TS1521,
TS1621, TS2021

Trapped Pressure Control Set Unloader

PARTS LIST

ZKW2 Pressure Control Set

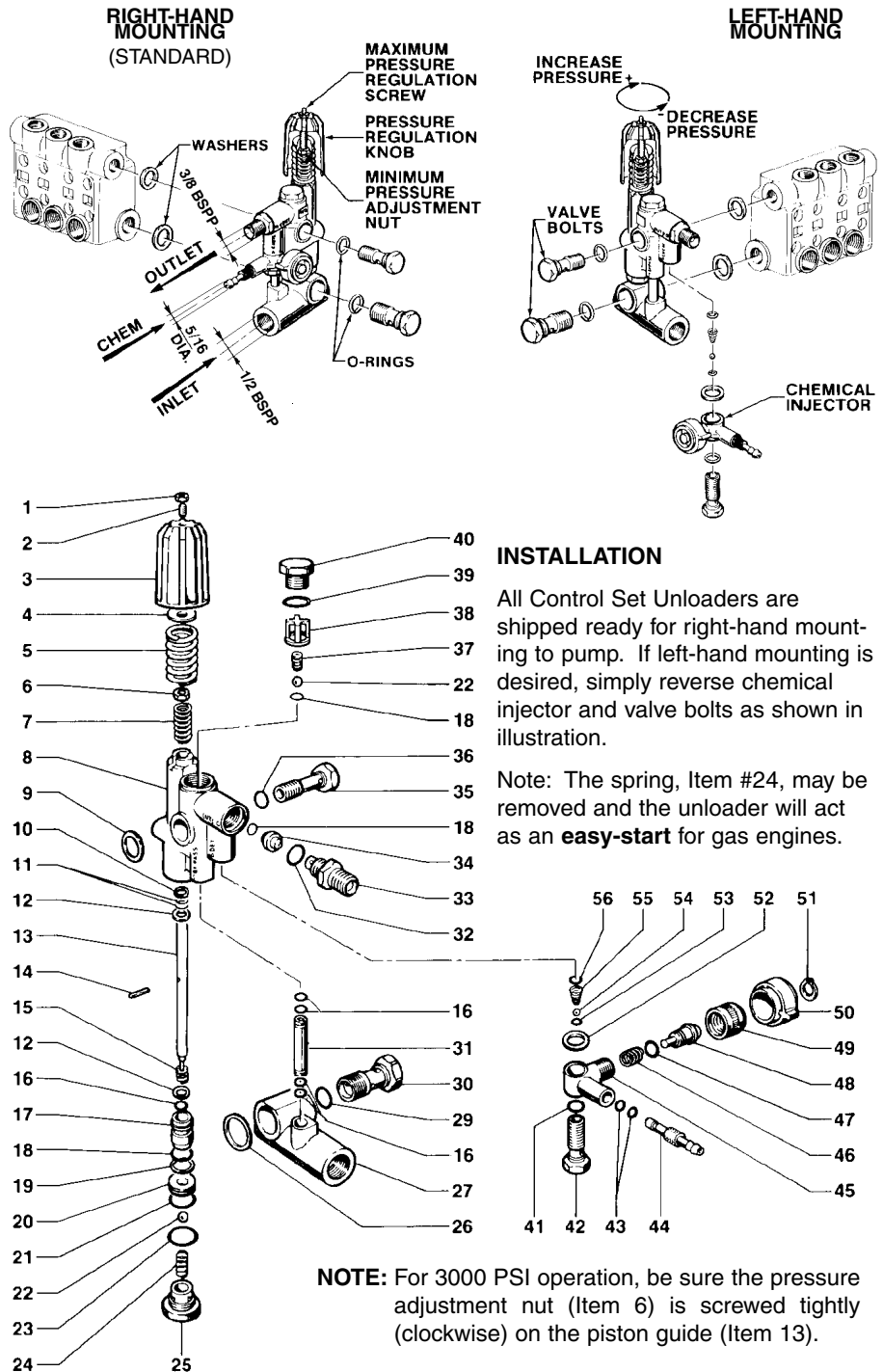
No.	Part No.	Description	Repair Kit	Qty.
1.	92.2020.00	Nut, M6		1
2.	99.1848.00	Screw, M6 x 16		1
3.	36.3145.02	Knob		1
4.	36.3141.64	Guide, Spring		1
5.	94.7516.00	Spring	93	1
6.	92.2200.00	Nut, M8		1
7.	94.7400.00	Spring		1
8.	36.3134.01	Body		1
9.	93.1858.00	Washer, M17.5		1
10.	90.5034.00	Ring, Back-up	93	1
11.	90.3577.00	O-Ring, .302 x .070	93	2
12.	96.7009.00	Washer, M8		2
13.	36.3143.73	Guide, Piston		1
14.	97.6660.00	Pin		1
15.	94.7384.00	Spring	93	1
16.	90.3574.00	O-Ring, .239 x .070	93	5
17.	36.3142.66	Piston, Control		1
18.	90.3822.00	O-Ring, .391 x .103	93, 94	3
19.	90.5065.00	Ring, Back-up, M10.6 x 15	93	1
20.	36.3137.66	Seat, Valve	93	1
21.	90.3593.00	O-Ring, .614 x .070	93	1
22.	97.4838.00	Ball, 13/32"	93	2
23.	90.3843.00	O-Ring, .703 x .103	93	1
24.	94.7374.00	Spring	93	1
25.	36.3136.70	Screw, M22 x 1.5		1
26.	93.1972.00	Washer, M21.5		1
27.	36.3135.22	Body, Banjo		1
29.	90.3841.00	O-Ring, .674 x .103	93	1
30.	36.3139.70	Fitting, Banjo		1
31.	36.3138.93	Bypass Tube; W2.1		1
	36.3162.93	W2.1L, W2.2L		
32.	90.3832.00	O-Ring, .549 x .103	94	1
33.	10.0078.70	Nipple		1
34.	10.0076.66	Nozzle; Ø.087" W2.1, W2.1L		1
	10.0077.66	Ø.098" W2.2L		
35.	36.3140.70	Screw, 3/8"		1
36.	90.3827.00	O-Ring, .469 x .103	93	1
37.	94.7355.00	Spring	93	1
38.	36.3104.51	Guide, Valve	93	1
39.	90.3839.00	O-Ring, .625 x .103	93	1
40.	98.2152.00	Cap, M20		1
41.	90.3585.00	O-Ring, .426 x .070	94	1
42.	36.2563.70	Seat, Valve		1
43.	90.3570.00	O-Ring, .176 x .070	94	2
44.	36.2566.70	Fitting, Hose Barb		1
45.	36.3146.41	Body, Injector		1
46.	94.7383.00	Spring	94	1
47.	90.3580.00	O-Ring, .344 x .070	94	1
48.	36.3147.70	Shutter		1
49.	36.3148.70	Insert, Knob		1
50.	36.3149.51	Knob, Regulation		1
51.	90.0545.00	Circlip		1
52.	96.7280.00	Washer, M14		1
53.	90.3572.00	O-Ring, .208 x .070	94	1
54.	97.4782.00	Ball, 7/32"	94	1
55.	94.8217.00	Spring, Taper	94	1
56.	90.3582.00	O-Ring, .364 x .070	94	1

Repair Kit 93

Includes No.'s: 5, 10, 11, 15, 16, 18, 19, 20, 21, 22, 23, 24, 28, 29, 36, 37, 38, 39

Repair Kit 94

Includes No.'s: 18, 32, 41, 43, 46, 47, 53, 54, 55, 56



INSTALLATION

All Control Set Unloaders are shipped ready for right-hand mounting to pump. If left-hand mounting is desired, simply reverse chemical injector and valve bolts as shown in illustration.

Note: The spring, Item #24, may be removed and the unloader will act as an **easy-start** for gas engines.

NOTE: For 3000 PSI operation, be sure the pressure adjustment nut (Item 6) is screwed tightly (clockwise) on the piston guide (Item 13).