

Spare parts list
(5.970-616.0) Spare parts list HD 2.3/15 C Ed/ 3.0/20

DE HINWEISE

Weitere Sprachen:

Diese Ersatzteilliste ist in weiteren Sprachen erhältlich. Sie erhalten diese unter www.kaercher.com im Bereich Service. Die Schreibweise der Teilenummer, z.B. 75456380, entspricht der Teilenummer 7.545-638.0.

Mengenangaben:

Die Mengenangaben in der Ersatzteilliste entsprechen den in der Baugruppe verbauten Stückzahlen der Bauteile.

Meterware:

Ersatzteile welche als Meterware geliefert werden sind auf Einbaulänge selbst zu kürzen. Die Stückzahlen sind als Mindestbestellmenge =1m angegeben und müssen je nach Bedarf auf weitere volle Meterzahlen erhöht werden.

Versionen/ Werknummern:

Sind Versionen oder Werknummern in der Ersatzteilliste angegeben, ist anhand dieser vor Bestellung zu prüfen, welches Bauteil für ihr Gerät verwendet werden muss.

Lackierte Teile:

Bei Bestellungen von lackierten Teilen welche in der Ersatzteilliste nicht in verschiedenen Farben ausgewiesen sind, ist zusätzlich die Farbnummer oder Farbe mit anzugeben.

Technische Änderungen:

Technische Änderungen sowie das Recht der ausschließlichen Auswertung unseres geistigen Eigentums behalten wir uns vor.

EN INSTRUCTIONS

Other languages:

This list of spare parts is also available in other languages. You can get this list from www.kaercher.com in the Service division. The designation of the part number e.g. 75456380 is equal to 7.545-638.0.

Quantity details:

The quantity details in the spare parts list correspond to the number of pieces of the component installed in the assembly group.

Piece goods:

Spare parts that are sold as piece goods are to be cut to the desired length. The quantities have been indicated as minimum order quantity =1m and must be rounded off to the full meter figure depending on your requirements.

Version/ Plant numbers:

If version or plant numbers are mentioned in the spare parts list, then use the same to check before ordering which spare part needs to be used for your appliance.

Painted parts:

While ordering painted parts that are not mentioned in the spare parts list in their colour variations, please mention the colour number or the colour you require.

Technical changes:

We reserve the right to make technical changes as well as the right to exclusive use of our intellectual property.

FR REMARQUES

Autres langues:

Cette liste de pièces de rechange est disponible en autres langues. Cela est disponible sous www.kaercher.com dans le menu Service. La désignation du numéro de pièce, par ex. 75456380, correspond au numéro de pièce 7.545-638.0.

Indications de quantité:

Les indications de quantité dans la liste de pièces de rechange correspondre aux nombres de pièces des composant utilisées dans la construction.

Matériel au mètre:

Les pièces de rechange qui sont livrées au mètre doivent être raccourcies à longueur souhaitée par l'acheteur même. Les nombres des pièces sont indiquées en quantité de commande minimale = 1m et doivent être augmentés selon le besoin à une chiffre de mètre complète.

Versions/ Numéros d'usine:

Lorsqu'il sont indiquées des versions ou des numéros d'usine dans la liste de pièces de rechange, vous devez vérifier que composant doit être utilisé pour votre appareil.

Pièces laquées:

Pour commander des pièces laquées, où les différentes couleurs ne sont pas indiquées dans la liste des pièces de rechange, vous devez indiquer en plus le numéro de la couleur ou seulement la couleur.

Modifications techniques:

Nous nous réservons la possibilité des modifications techniques ainsi le droit d'exploitation exclusive de notre propriété intellectuelle.

IT AVVERTENZE

Altre lingue:

Il presente elenco di parti di ricambio è disponibile sul nostro sito Web anche in altre lingue: sotto www.kaercher.com alla voce "Service".

L'indicazione del codice pezzo, ad es. 75456380, corrisponde al codice pezzo 7.545-638.0

Indicazioni di quantità:

Le indicazioni di quantità riportate dall'elenco "parti di ricambio" corrispondono al numero delle singole componenti contenute nella rispettiva unità.

Merce a metro:

Le parti di ricambio fornite come "merce a metro" devono venire in seguito accorciate alla lunghezza necessaria per il montaggio. La quantità unitaria è indicata come "quantità minima di ordinazione = 1m" e deve all'occorrenza venire moltiplicata per il numero intero di metri necessari.

Versioni / Numeri di fabbricazione:

Quando l'elenco "parti di ricambio" riporta diverse versioni o numeri di fabbricazione, confrontare la versione o il numero di fabbricazione del ricambio desiderato con quelle/i presenti nell'elenco e indicarla/o al momento dell'ordinazione.

Parti di ricambio verniciate:

Nel caso di ricambi verniciati, se l'elenco parti di ricambio non ne riporta espressamente i diversi colori, al momento dell'ordinazione è necessario indicare anche il colore o il numero del colore desiderato.

Modifiche tecniche:

Ci riserviamo il diritto di apportare modifiche tecniche così come il diritto di utilizzo esclusivo della nostra proprietà intellettuale.

ES INDICACIONES

Otros idiomas:

La lista de piezas de repuesto se puede adquirir en otros idiomas. La puede adquirir en www.kaercher.com en el área de servicios.

La notación de los números de las piezas, p.ej. 75456380 corresponde al número de pieza 7.545-638.0.

Cantidades:

Las indicaciones de cantidades de la lista de piezas de repuesto corresponden al número de piezas montadas en el componente.

Mercancía por metros:

Las piezas de repuesto que se suministran por metros se pueden cortar al largo deseado. La unidad mínima de pedido es de = 1 m y el número de metros completos se puede aumentar según necesidad.

Versiones/números de fábrica:

Si se indica la versión o número de fábrica en la lista de piezas de repuesto, se debe comprobar en ella la pieza a usar para su aparato antes de realizar el pedido.

Piezas lacadas:

Al realizar pedidos de piezas lacadas que no estén indicadas en los diferentes colores en la lista de piezas de repuesto, se debe indicar también la referencia del color o el color.

Modificaciones técnicas:

Reservados los derechos de realizar modificaciones técnicas y aprovechar nuestra propiedad intelectual.

PL WSKAZÓWKI

Pozostałe języki:

Ta lista części zamiennych jest dostępna w także w innych językach. Mogą ją Państwo pobrać ze strony www.kaercher.com w dziale Serwis.

Sposób zapisywania numeru części, np. 75456380, odpowiada numerowi części 7.545-638.0.

Dane ilości:

Dane ilości podane w liście części zamiennych odpowiadają liczbie sztuk podzespołów tworzących dany moduł.

Towar sprzedawany na metry:

Części zamienne dostarczane jako towar sprzedawany na metry po zamontowaniu należy samodzielnie skrócić do potrzebnej długości. Liczba sztuk podana jest jako minimalna ilość zamówienia = 1m i w zależności od potrzeb zwiększa się ją o kolejne pełne metry.

Wersje/ Numer zakładu:

Jeżeli w liście części zamiennych podane są wersje lub numery zakładu, przed zamówieniem na ich podstawie należy sprawdzić, który podzespół stosuje się w Państwa urządzeniu.

Części lakierowane:

W przypadku zamówień części lakierowanych, które w liście części zamiennych nie podano w wielu kolorach, należy dodatkowo zaznaczyć nr koloru lub kolor.

Zmiany techniczne:

Zastrzegamy sobie prawo do zmian technicznych oraz wyłącznego wykorzystywania naszej własności intelektualnej.

RU УКАЗАНИЯ:

Другие языки:

Данный список запасных частей также доступен на других языках. Вы найдете его на сайте www.kaercher.com в разделе Service
Маркировка номера детали, например, 75456380, соответствует номеру детали 7.545-638.0.

Указание количества:

Количественные данные в списке запасных частей соответствуют числу компонентов, входящих в состав узлов.

Товар, продаваемый на метры:

Запасные части, продающиеся на метры, необходимо обрезать до нужной длины. Число изделий указано в виде минимального объема заказа = 1м и их количество можно округлить до требуемого по мере необходимости.

Варианты исполнения/заводские номера:

Если варианты исполнения или заводские номера указаны в списке запасных частей, то перед заказом необходимо проверить, какая деталь подходит для вашего устройства.

Лакированные детали:

При заказе лакированных деталей, варианты расцветки которых не указаны в списке запасных частей, необходимо дополнительно указать номер цвета или необходимый для вас цвет.

Технические изменения:

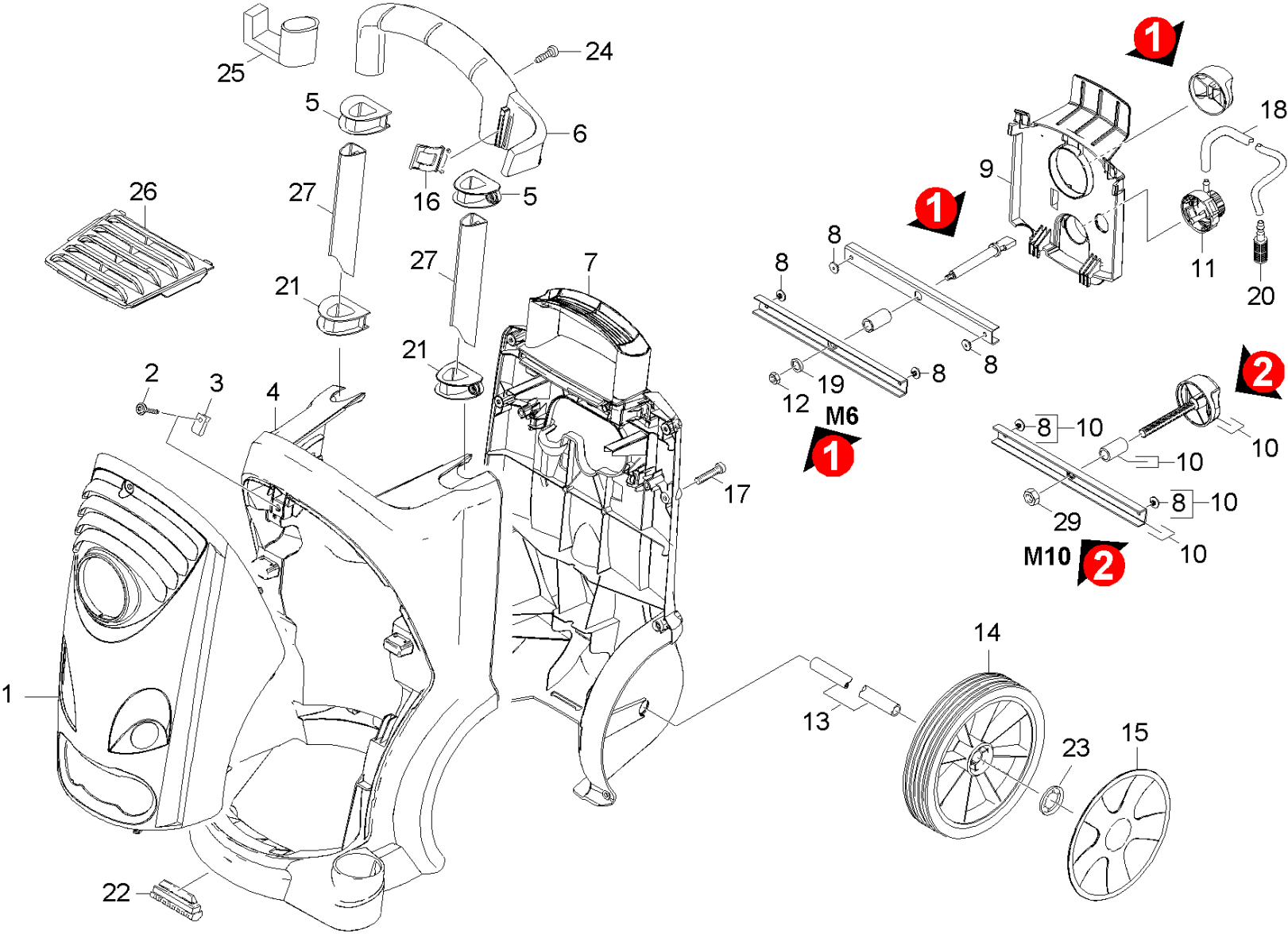
Мы оставляем за собой право на технические изменения, а также право на исключительное использование нашей интеллектуальной собственности.

Table of contents

| | |
|--|----------|
| Spare parts list HD 2.3/15 C Ed/ 3.0/20 (5.970-616.0) | 6 |
| 10 Housing (0.103-162.0) | 7 |
| 20 Pump set (0.107-689.0) | 10 |
| 21 Cylinder head (0.107-696.0) | 11 |
| 100 PUMP SET HD 5/12 C (2.883-997.0) | 15 |
| 22 Thrust guidance (0.107-700.0) | 16 |
| 30 Motor (0.112-101.0) | 18 |
| 40 Accessories (0.149-023.0) | 21 |
| 41 Hand trigger gun (0.148-901.0) | 22 |
| 9 Spare part set O-Ring seal 5x (2.880-296.0) | 24 |
| 42 Jet pipe (0.148-902.0) | 25 |
| 4 Spare part set O-Ring seal 5x (2.880-296.0) | 27 |
| 43 Nozzle (0.149-024.0) | 28 |
| 44 Nozzle (0.103-719.0) | 30 |
| 50 Electric box (0.105-939.0) | 32 |
| 51 Electric box (0.127-244.0) | 33 |
| 52 Electric box (0.105-940.0) | 36 |

Spare parts list HD 2.3/15 C Ed/ 3.0/20 (5.970-616.0)

| Pos | Material # | Name |
|-----|-------------|--------------|
| 10 | 0.103-162.0 | Housing |
| 20 | 0.107-689.0 | Pump set |
| 30 | 0.112-101.0 | Motor |
| 40 | 0.149-023.0 | Accessories |
| 50 | 0.105-939.0 | Electric box |



10 Housing (0.103-162.0)

| ET/VT (spare/wear parts) | Pos | Material # | Name | Qty. | Unit | from ser.nr. | up to ser.nr. | var. information | Footnote text |
|---|-----|-------------|-----------------------------------|-------|------|--------------|---------------|------------------|---------------|
| | 1 | 5.069-202.0 | Device cover | 1.000 | ST | | | | |
| Position text: 1.150-614.0 | | | | | | | | | |
| | 1 | 5.069-121.0 | Device cover | 1.000 | ST | 0000000000 | 0000000000 | | |
| Position text: 1.150-610.0 /-611.0 /-616.0 | | | | | | | | | |
| X-X | 2 | 6.304-099.0 | Saucer-head screw M 6x 18-4.8-R2R | 1.000 | ST | 0000000000 | 0000000000 | | |
| X-X | 3 | 6.310-053.0 | Putting nut | 1.000 | ST | 0000000000 | 0000000000 | | |
| | 4 | 5.050-286.0 | Frame front part | 1.000 | ST | 0000000000 | 0000000000 | | |
| Position text: 1.150-610.0 / -611.0 /-616.0 | | | | | | | | | |
| | 4 | 5.050-206.0 | Frame front part | 1.000 | ST | | | | |
| Position text: 1.150-614.0 / | | | | | | | | | |
| | 5 | 5.032-554.0 | Guide | 2.000 | ST | 0000000000 | 0000000000 | | |
| X-X | 6 | 5.321-721.0 | Hand grip | 1.000 | ST | 0000000000 | 0000000000 | | |
| | 7 | 5.050-207.0 | Frame rear panel | 1.000 | ST | 0000000000 | 0000000000 | | |
| | 8 | 6.315-086.0 | Rivet | 4.000 | ST | 0000000000 | 0000000000 | | |
| | 9 | 5.032-556.0 | Covering cap | 1.000 | ST | 0000000000 | 0000000000 | | |
| | 10 | 2.885-007.0 | Spare part set Griff | 1.000 | ST | 0000000000 | 0000000000 | | |
| X-X | 11 | 4.063-778.0 | Proportioning valve chemistry | 1.000 | ST | 0000000000 | 0000000000 | | |
| | 12 | 7.311-061.0 | Hexagon nut M6-LH -8-A2E ISO 4032 | 1.000 | ST | 0000000000 | 0000000000 | (M6) | |
| | 13 | 5.105-399.0 | Axle | 1.000 | ST | 0000000000 | 0000000000 | | |
| X-X | 14 | 6.435-662.0 | Wheel D200 | 2.000 | ST | 0000000000 | 0000000000 | | |
| Position text: 1.150-610.0 / -611.0 /-616.0 | | | | | | | | | |
| | 14 | 6.435-756.0 | Wheel grey D200 | 2.000 | ST | | | | |
| Position text: 1.150-614.0 / | | | | | | | | | |
| | 15 | 4.515-273.0 | Spare parts set wheel cab | 1.000 | ST | | | | |
| Position text: 1.150-614.0 / | | | | | | | | | |

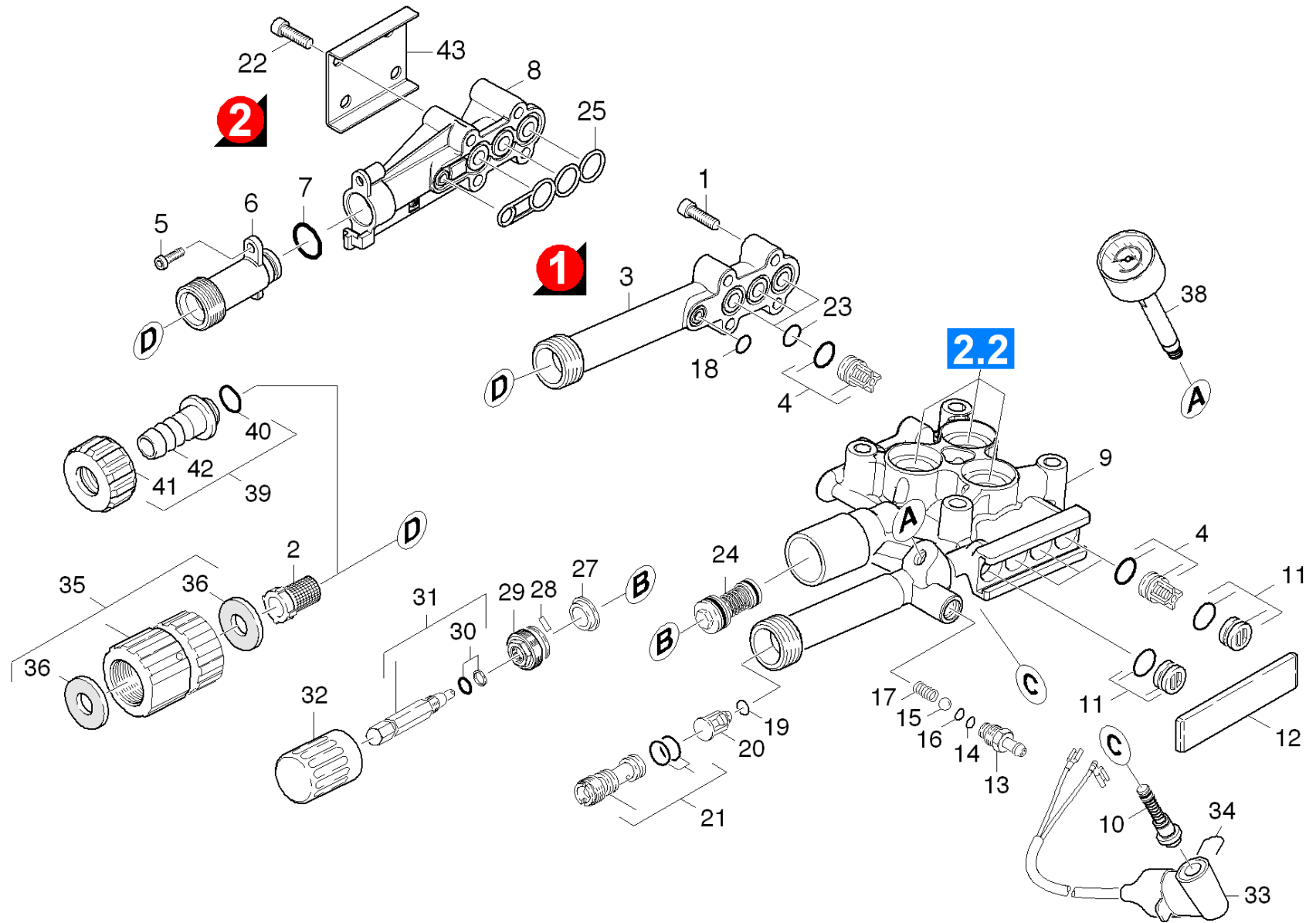
10 Housing (0.103-162.0)

| ET/VT (spare/wear parts) | Pos | Material # | Name | Qty. | Unit | from ser.nr. | up to ser.nr. | var. information | Footnote text |
|---|-----|-------------|-------------------------------|--------|------|--------------|---------------|------------------|-----------------------|
| X | 15 | 4.515-103.0 | Spare parts set wheel cab | 1.000 | ST | 0000000000 | 0000000000 | | SET OF 2 PIECES |
| Position text: 1.150-610.0 / -611.0 /-616.0 | | | | | | | | | |
| X-X | 16 | 5.044-216.0 | Holder | 1.000 | ST | 0000000000 | 0000000000 | | |
| X-X | 17 | 7.303-108.0 | Screw 5x20 -10.9-R2R (In6Rd) | 10.000 | ST | 0000000000 | 0000000000 | | |
| | 18 | 6.388-216.0 | Hose DN 5 | 1.000 | M | 0000000000 | 0000000000 | | TO ORDER AS CUT GOODS |
| X-X | 19 | 7.312-260.0 | Washer 6 -100HV-A3E ISO 7094 | 1.000 | ST | 0000000000 | 0000000000 | | |
| X | 20 | 5.731-652.0 | Filter with weight | 1.000 | ST | 0000000000 | 0000000000 | | |
| | 21 | 5.032-555.0 | Guide | 2.000 | ST | 0000000000 | 0000000000 | | |
| | 22 | 5.057-077.0 | Support | 2.000 | ST | | | | |
| Position text: 1.150-614.0 / | | | | | | | | | |
| X-X | 22 | 5.057-062.0 | Support | 2.000 | ST | 0000000000 | 0000000000 | | |
| Position text: 1.150-610.0 / -611.0 /-616.0 | | | | | | | | | |
| X-X | 23 | 6.343-168.0 | Lock washer | 2.000 | ST | 0000000000 | 0000000000 | | |
| X-X | 24 | 7.303-046.0 | Screw M6x12 -St-R3R (In6Rd) | 2.000 | ST | 0000000000 | 0000000000 | | |
| | 25 | 5.037-170.0 | Hook | 1.000 | ST | 0000000000 | 0000000000 | | |
| | 26 | 5.064-217.0 | Cover air inlet | 1.000 | ST | 0000000000 | 0000000000 | | |
| | 27 | 5.107-248.0 | Bar shearing shackle | 2.000 | ST | | | | |
| | 29 | 7.311-088.0 | Hexagon nut M10-8-A2K EN 1664 | 1.000 | ST | | | (M10) | |

20 Pump set (0.107-689.0)

| Pos | Material # | Name | Qty. | Unit |
|-----|-------------|-----------------|-------|------|
| 21 | 0.107-696.0 | Cylinder head | 1.000 | ST |
| 22 | 0.107-700.0 | Thrust guidance | 1.000 | ST |

21 Cylinder head (0.107-696.0)



21 Cylinder head (0.107-696.0)

| ET/VT (spare/wear parts) | Pos | Material # | Name | Qty. | Unit |
|--------------------------|-----|-------------|------------------------------------|-------|------|
| X-X | 1 | 7.306-105.0 | Screw M6x30 -8.8-R3R (In6Rd) | 4.000 | ST |
| X-X | 2 | 6.414-252.0 | Strainer | 1.000 | ST |
| | 3 | 5.064-150.0 | Suction cover | 1.000 | ST |
| X-X | 4 | 2.884-916.0 | Valve (3 Stück) | 2.000 | ST |
| X-X | 5 | 7.303-108.0 | Screw 5x20 -10.9-R2R (In6Rd) | 1.000 | ST |
| | 6 | 5.402-727.0 | Suction nipple | 1.000 | ST |
| X-X | 7 | 6.362-481.0 | O-Ring seal 14,0x2,0-NBR 80 | 1.000 | ST |
| | 8 | 5.064-230.0 | Suction cover | 1.000 | ST |
| | 9 | 5.550-324.0 | Cylinder head | 1.000 | ST |
| X-X | 10 | 2.884-501.0 | Spare part set control piston | 1.000 | ST |
| X-X | 11 | 4.132-007.0 | Drain plug only for replacement | 4.000 | ST |
| | 12 | 5.003-062.0 | Plate | 1.000 | ST |
| X-X | 13 | 5.443-624.0 | Nipple | 1.000 | ST |
| X | 14 | 6.362-113.0 | O-Ring seal 6,0 X 2,0 | 1.000 | ST |
| | 15 | 7.401-908.0 | Sphere 7 G300 -1.4301 DIN 5401 | 1.000 | ST |
| X-X | 16 | 6.362-175.0 | O-Ring seal 5,28x 1,78 | 1.000 | ST |
| | 17 | 5.332-258.0 | Helical spring | 1.000 | ST |
| X-X | 18 | 6.362-384.0 | O-Ring seal 9,0 x 1,5 | 1.000 | ST |
| X-X | 19 | 6.362-851.0 | O-Ring seal 4 x 2 NBR 90 | 1.000 | ST |
| X-X | 20 | 5.584-091.0 | Valve pin check valve | 1.000 | ST |
| X | 21 | 4.769-034.0 | Nozzle insert only for replacement | 1.000 | ST |
| | 22 | 7.306-129.0 | Screw M6x40 -8.8-R3R (In6Rd) | 4.000 | ST |
| X-X | 23 | 6.362-533.0 | O-Ring seal 14,0 X 1,5-NBR 70 | 3.000 | ST |
| X-X | 24 | 4.591-038.0 | Overflow valve | 1.000 | ST |
| X | 25 | 5.365-284.0 | Profile gasket | 1.000 | ST |

21 Cylinder head (0.107-696.0)

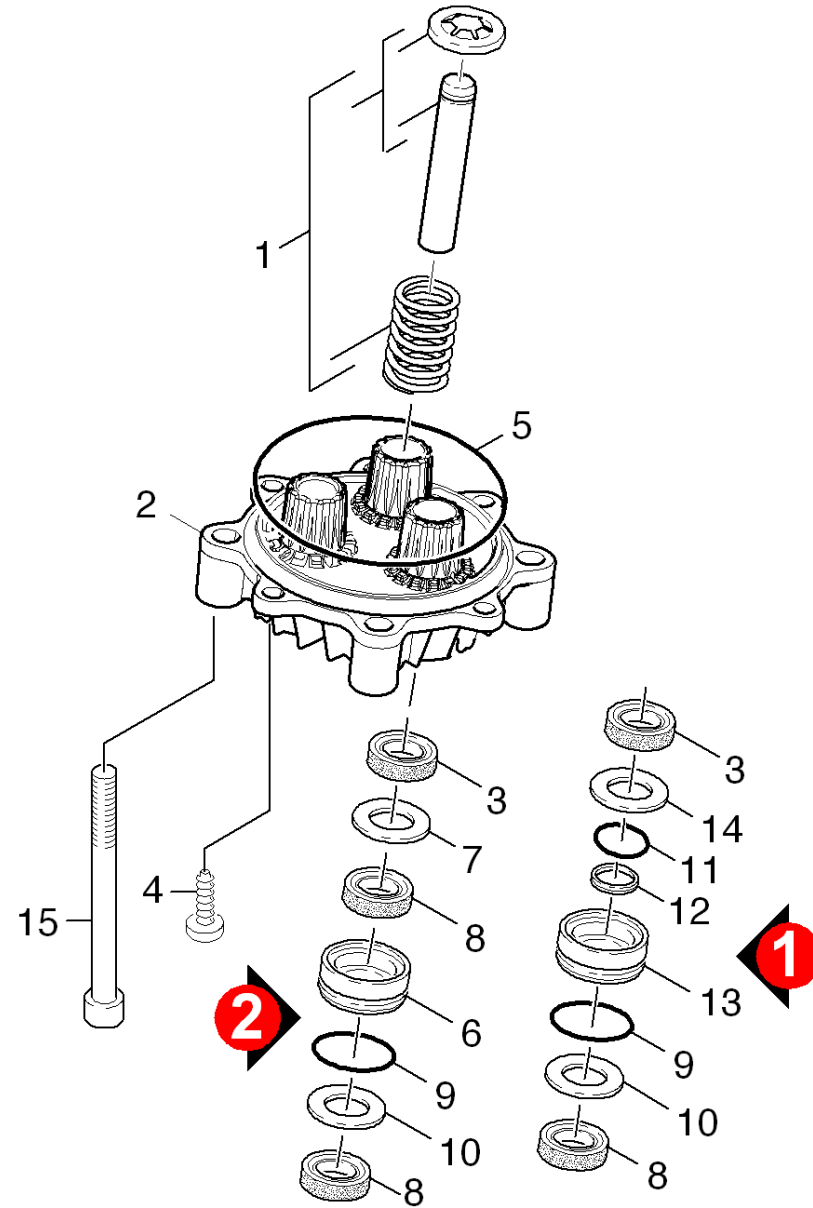
| ET/VT (spare/wear parts) | Pos | Material # | Name | Qty. | Unit |
|--|-----|-------------|--------------------------------------|-------|------|
| X | 27 | 5.110-630.0 | Sleeve | 1.000 | ST |
| X-X | 28 | 7.314-629.0 | Grooved pin 2x10 -A1 ISO 8742 | 1.000 | ST |
| X | 29 | 5.583-147.0 | Valve screw | 1.000 | ST |
| X-X | 30 | 6.362-468.0 | O-Ring seal complete 1ST.-R. | 1.000 | ST |
| | 31 | 4.291-014.0 | Spindle complete | 1.000 | ST |
| X-X | 32 | 5.321-307.0 | Handhold | 1.000 | ST |
| X-X | 33 | 4.744-242.0 | Switch kpl. -nur für Ersatz- | 1.000 | ST |
| Position text: 1.150-616.0 | | | | | |
| | 33 | 4.744-193.0 | Switch complete | 1.000 | ST |
| Position text: 1.150-610.0 /-611.0 /-614.0 / | | | | | |
| X-X | 34 | 5.034-494.0 | Retaining bracket | 1.000 | ST |
| X-X | 35 | 4.401-059.0 | Screw connector part | 1.000 | ST |
| | 36 | 5.364-129.0 | Flat gasket | 1.000 | ST |
| | 38 | 6.421-320.0 | Pressure gauge 0-15 MPa | 1.000 | ST |
| Position text: /1.150-611.0 / -614.0 /-616.0 / | | | | | |
| X-X | 38 | 6.421-274.0 | Pressure gauge | 1.000 | ST |
| Position text: /1.150-610.0 | | | | | |
| | 39 | 4.401-070.0 | Screw connector part neutrally * AUS | 1.000 | ST |
| Position text: 1.150-616.0 | | | | | |
| X-X | 40 | 6.362-078.0 | O-Ring seal 13,3x2,4 | 1.000 | ST |
| Position text: 1.150-616.0 | | | | | |
| | 41 | 5.310-065.0 | Nut | 1.000 | ST |
| Position text: 1.150-616.0 | | | | | |
| | 42 | 5.443-229.0 | Hose stem | 1.000 | ST |
| Position text: 1.150-616.0 | | | | | |

21 Cylinder head (0.107-696.0)

| ET/VT (spare/wear parts) | Pos | Material # | Name | Qty. | Unit |
|--------------------------|-----|-------------|---------------------|-------|------|
| | 43 | 5.005-314.0 | Plate suction cover | 1.000 | ST |
| X-X | 100 | 2.883-997.0 | PUMP SET HD 5/12 C | 1.000 | ST |

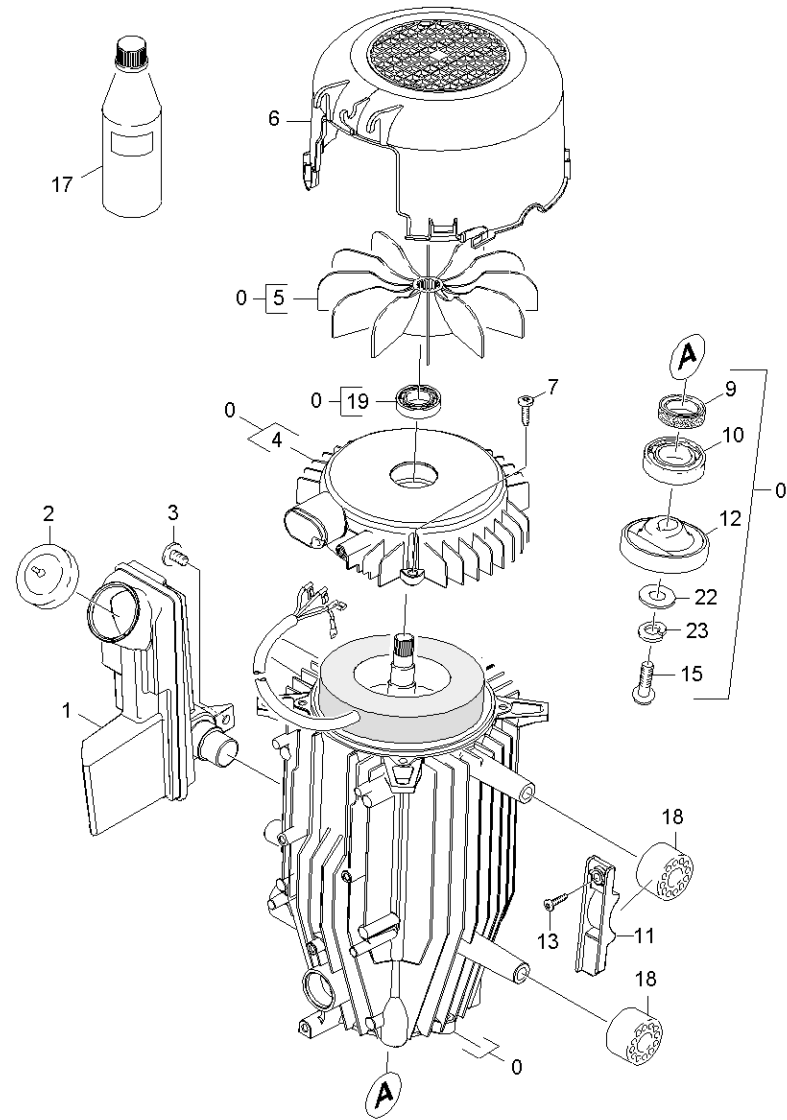
100 PUMP SET HD 5/12 C (2.883-997.0)

| ET/VT (spare/wear parts) | Pos | Material # | Name | Qty. | Unit |
|--------------------------|-----|-------------|---------------------------------|-------|------|
| X-X | 10 | 4.132-007.0 | Drain plug only for replacement | 4.000 | ST |
| X-X | 20 | 4.580-311.0 | Valve complete | 6.000 | ST |
| X-X | 30 | 5.112-726.0 | Bush | 3.000 | ST |
| X-X | 40 | 5.115-721.0 | Washer | 3.000 | ST |
| X-X | 50 | 5.116-093.0 | Washer | 3.000 | ST |
| X | 60 | 6.288-072.0 | Silicon grease | 1.000 | ST |
| X-X | 70 | 6.362-376.0 | O-Ring seal 24,0 X 1,5 | 3.000 | ST |
| X-X | 80 | 6.362-384.0 | O-Ring seal 9,0 x 1,5 | 1.000 | ST |
| X-X | 90 | 6.362-533.0 | O-Ring seal 14,0 X 1,5-NBR 70 | 3.000 | ST |
| X-X | 100 | 6.365-393.0 | Oil sealing 12x20x4/6 | 3.000 | ST |
| X-X | 110 | 6.365-477.0 | Grooved ring | 6.000 | ST |



22 Thrust guidance (0.107-700.0)

| ET/VT (spare/wear parts) | Pos | Material # | Name | Qty. | Unit |
|--|-----|-------------|---|-------|------|
| X-X | 1 | 4.553-265.0 | Piston complete only for replacement | 3.000 | ST |
| Position text: /1.150-611.0 / -614.0 /-616.0 / | | | | | |
| X-X | 1 | 4.553-231.0 | Piston complete only for replacement | 3.000 | ST |
| Position text: /1.150-610.0 | | | | | |
| | 2 | 5.061-018.0 | Thrust guidance | 1.000 | ST |
| X-X | 3 | 6.365-393.0 | Oil sealing 12x20x4/6 | 3.000 | ST |
| | 4 | 7.303-047.0 | Screw M6x16 -St-R3R (In6Rd) | 2.000 | ST |
| X-X | 5 | 6.363-252.0 | O-Ring seal 75,87 x 2,62 | 1.000 | ST |
| X-X | 6 | 5.112-726.0 | Bush | 3.000 | ST |
| Position text: 1.150-610.0 / -611.0 /-616.0 | | | | | |
| X-X | 7 | 5.116-093.0 | Washer | 3.000 | ST |
| Position text: 1.150-610.0 / -611.0 /-616.0 | | | | | |
| X-X | 8 | 6.365-477.0 | Grooved ring | 6.000 | ST |
| Position text: 1.150-610.0 / -611.0 /-616.0 | | | | | |
| X-X | 9 | 6.362-376.0 | O-Ring seal 24,0 X 1,5 | 3.000 | ST |
| X-X | 10 | 5.115-721.0 | Washer | 3.000 | ST |
| X-X | 11 | 6.363-402.0 | O-Ring seal 11x3 NBR | 3.000 | ST |
| Position text: 1.150-614.0 / | | | | | |
| X-X | 12 | 5.362-012.0 | Joint ring D 12 | 3.000 | ST |
| Position text: 1.150-614.0 / | | | | | |
| | 13 | 5.112-825.0 | Bush | 3.000 | ST |
| Position text: 1.150-614.0 / | | | | | |
| X | 14 | 5.116-335.0 | Washer | 3.000 | ST |
| Position text: 1.150-614.0 / | | | | | |
| X | 15 | 7.306-106.0 | Cylinder head screw M8x70 -8.8-A2E ISO4 | 4.000 | ST |



30 Motor (0.112-101.0)

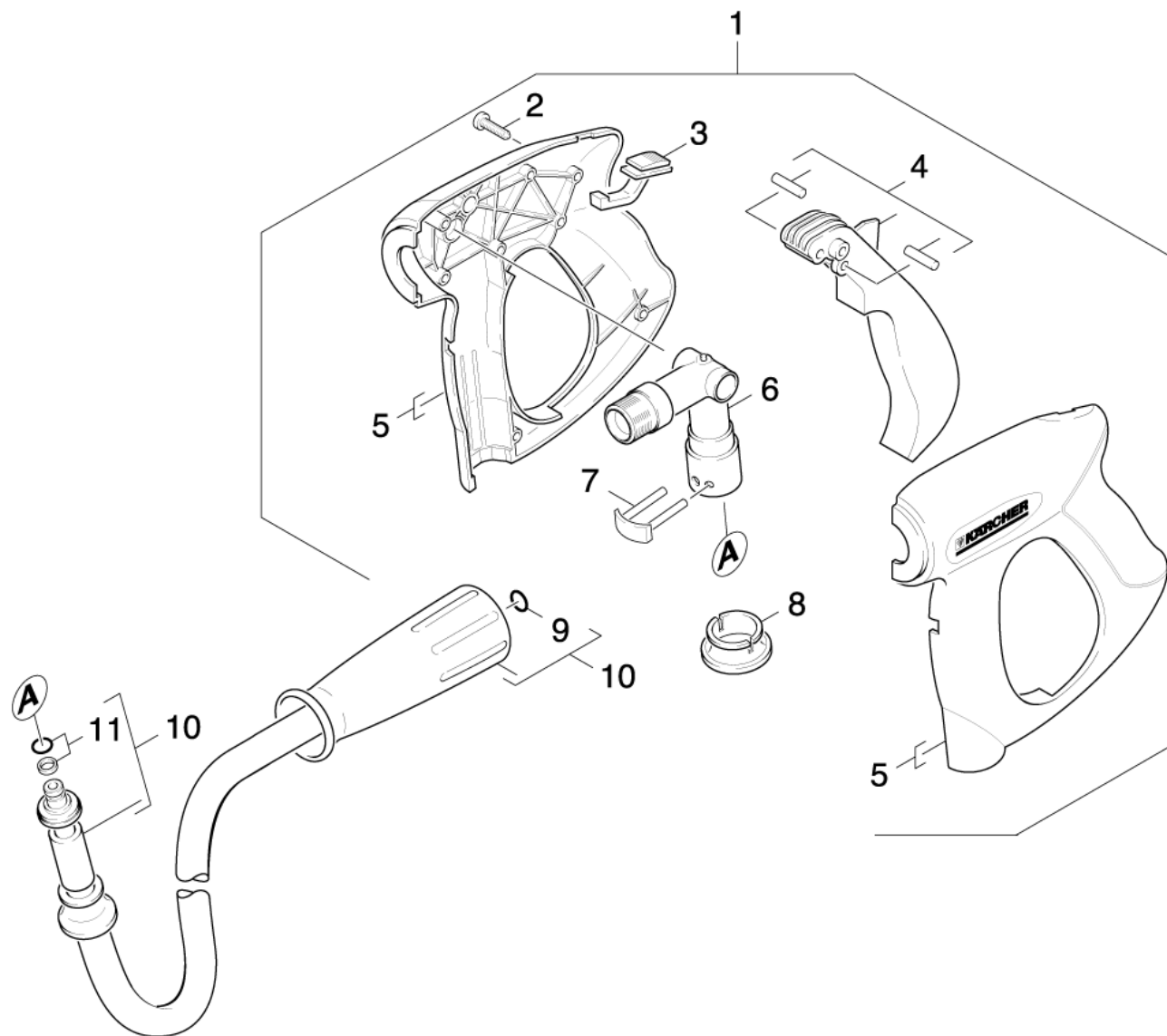
| ET/VT (spare/wear parts) | Pos | Material # | Name | Qty. | Unit |
|--|-----|-------------|---|-------|------|
| | 0 | 4.623-853.0 | Motor complete only for replacement | 1.000 | ST |
| Position text: /1.150-610.0 | | | | | |
| | 0 | 4.623-858.0 | Motor complete only for replacement | 1.000 | ST |
| Position text: /1.150-611.0 / -614.0 /-616.0 / | | | | | |
| X | 1 | 5.070-639.0 | Tank oil | 1.000 | ST |
| X-X | 2 | 5.063-195.0 | Cover | 1.000 | ST |
| | 3 | 6.303-153.0 | Screw M5x15-ST-R2R (IN6RD) | 1.000 | ST |
| | 4 | 5.064-197.0 | Bearing cover B | 1.000 | ST |
| X-X | 5 | 5.600-060.0 | Blower wheel | 1.000 | ST |
| X | 6 | 5.692-081.0 | Air circulation | 1.000 | ST |
| | 7 | 6.303-320.0 | Screw M 5x 20-St-R2R | 4.000 | ST |
| X-X | 9 | 7.367-001.0 | Radial shaft seal ring A24x37x7 -NBR DI | 1.000 | ST |
| | 10 | 6.401-410.0 | Angular contact ball bearing | 1.000 | ST |
| X | 11 | 5.802-288.0 | Mounting part | 2.000 | ST |
| | 12 | 4.120-219.0 | Wobble plate complete | 1.000 | ST |
| Position text: /1.150-611.0 / -614.0 /-616.0 / | | | | | |
| | 12 | 4.120-216.0 | Wobble plate | 1.000 | ST |
| Position text: /1.150-610.0 | | | | | |
| X-X | 13 | 7.303-108.0 | Screw 5x20 -10.9-R2R (In6Rd) | 2.000 | ST |
| X | 15 | 7.306-042.0 | Cylinder head screw M8x25 -8.8-A2E ISO4 | 1.000 | ST |
| X | 17 | 6.288-219.0 | Engine oil 1 L | 1.000 | ST |
| Position text: /1.150-611.0 / -614.0 /-616.0 / | | | | | |
| X-X | 17 | 6.288-050.0 | Engine oil 1L | 1.000 | ST |
| Position text: /1.150-610.0 | | | | | |
| X | 18 | 5.767-005.0 | Rubber buffer | 4.000 | ST |

30 Motor (0.112-101.0)

| ET/VT (spare/wear parts) | Pos | Material # | Name | Qty. | Unit |
|--------------------------|-----|-------------|---|-------|------|
| | 19 | 7.401-128.0 | Ball bearing 6202-2RS -Wälzl.St DIN 625 | 1.000 | ST |
| | 22 | 7.312-277.0 | Washer 8-200HV-A2E ISO7093-1 | 1.000 | ST |
| | 23 | 7.313-004.0 | Spring washer B 8-FSt-A3E DIN 127 | 1.000 | ST |

40 Accessories (0.149-023.0)

| Pos | Material # | Name | Qty. | Unit | var. information |
|-----|-------------|------------------|-------|------|------------------|
| 41 | 0.148-901.0 | Hand trigger gun | 1.000 | ST | |
| 42 | 0.148-902.0 | Jet pipe | 1.000 | ST | |
| 43 | 0.149-024.0 | Nozzle | 1.000 | ST | VERSION 1 |
| 44 | 0.103-719.0 | Nozzle | 1.000 | ST | VERSION 2 |

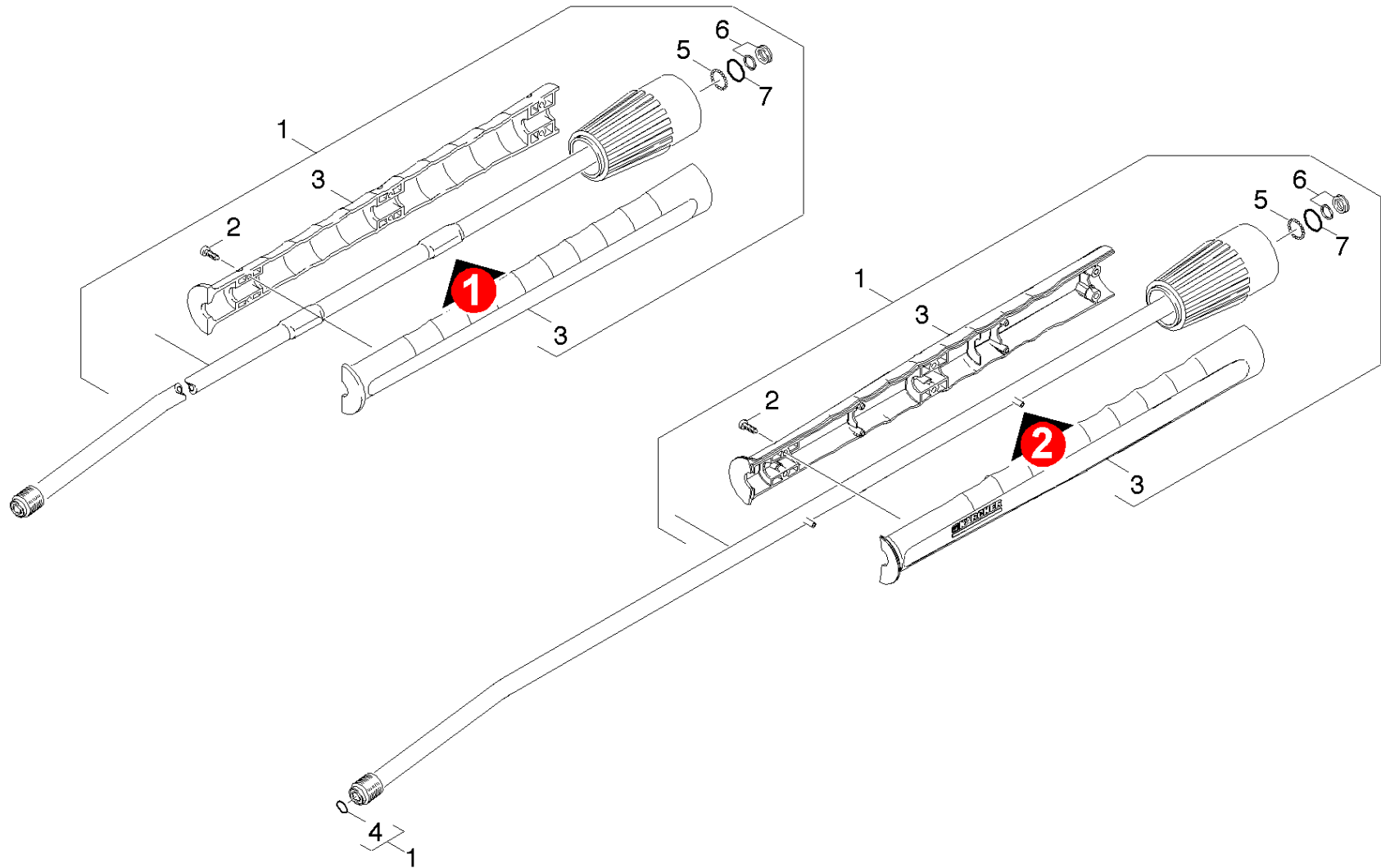


41 Hand trigger gun (0.148-901.0)

| ET/VT (spare/wear parts) | Pos | Material # | Name | Qty. | Unit | from ser.nr. | up to ser.nr. |
|---|-----|-------------|--|-------|------|--------------|---------------|
| X-X | 1 | 4.775-463.0 | HAND TRIGGER GUN EASY PRESS | 1.000 | ST | 0000000000 | 0000000000 |
| Position text: / -251.0 | | | | | | | |
| | 2 | 7.303-096.0 | Screw 4x22 -ST-10.9-R2R (IN6RD) | 7.000 | ST | 0000000000 | 0000000000 |
| | 3 | 5.481-331.0 | Slider | 1.000 | ST | 0000000000 | 0000000000 |
| X | 4 | 4.481-209.0 | Lever complete | 1.000 | ST | 0000000000 | 0000000000 |
| | 5 | 5.321-669.0 | Handhold few | 1.000 | ST | 0000000000 | 0000000000 |
| X-X | 6 | 4.427-215.0 | Manifold complete only for replacement | 1.000 | ST | 0000000000 | 0000000000 |
| X-X | 7 | 4.037-013.0 | Hook | 1.000 | ST | 0000000000 | 0000000000 |
| X-X | 8 | 5.110-596.0 | Sleeve | 1.000 | ST | 0000000000 | 0000000000 |
| X-X | 9 | 2.880-296.0 | Spare part set O-Ring seal 5x | 1.000 | ST | 0000000000 | 0000000000 |
| X-X | 10 | 6.390-025.0 | High pressure hose DN 8 | 1.000 | ST | 0000000000 | 0000000000 |
| Position text: 1.150-610.0 / -611.0 /-616.0 | | | | | | | |
| X-X | 10 | 6.391-654.0 | High pressure hose food DN6 15m | 1.000 | ST | | |
| Position text: 1.150-614.0 / | | | | | | | |
| X-X | 11 | 4.363-691.0 | O-Ring seal kpl. -nur fuer Ersatz- | 1.000 | ST | 0000000000 | 0000000000 |

9 Spare part set O-Ring seal 5x (2.880-296.0)

| Pos | Material # | Name | Qty. | Unit |
|-----|-------------|-----------------------------------|-------|------|
| 10 | 6.362-957.0 | O-Ring seal 10,0 X 2,0-EPDM 85-90 | 5.000 | ST |

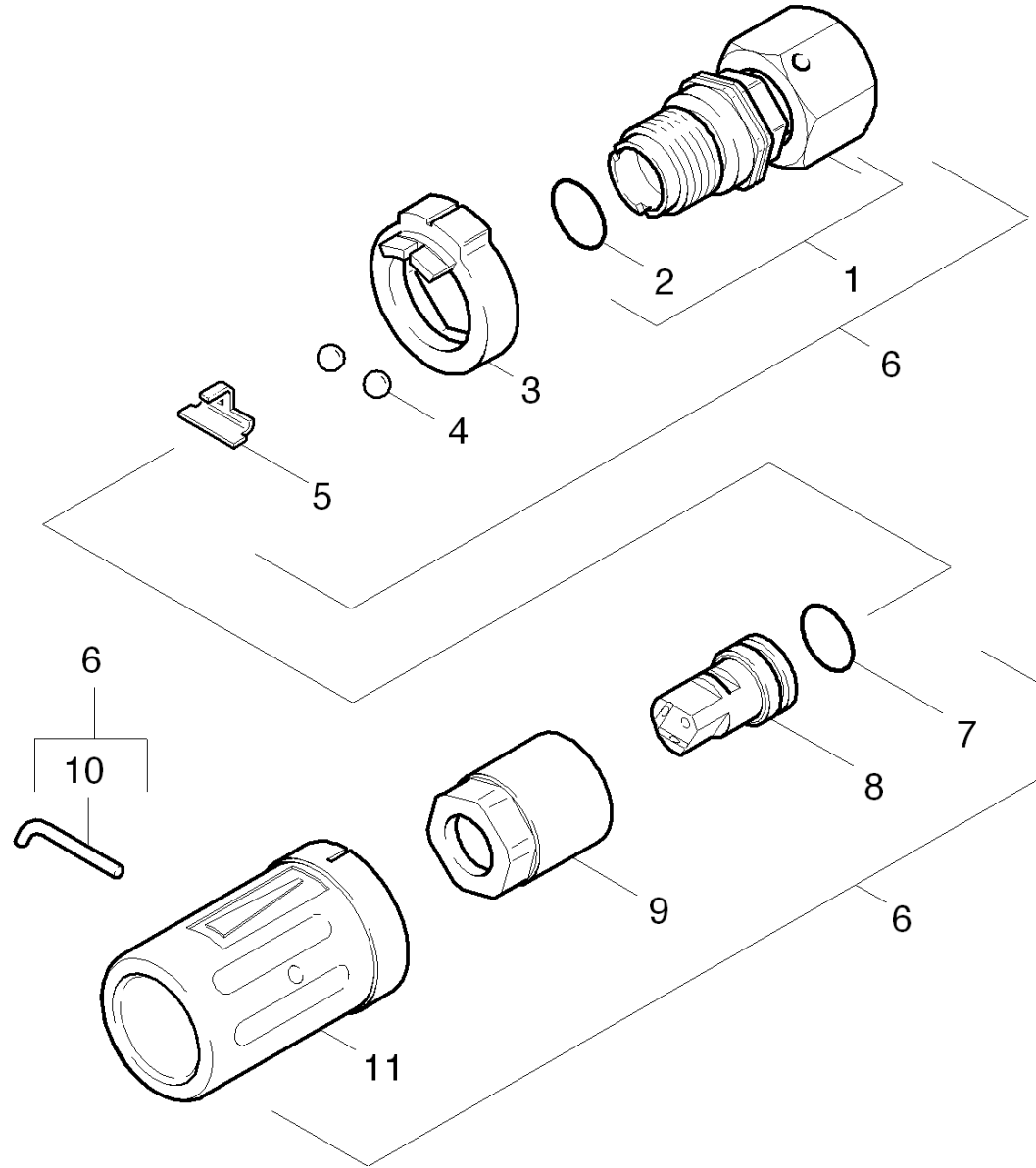


42 Jet pipe (0.148-902.0)

| ET/VT (spare/wear parts) | Pos | Material # | Name | Qty. | Unit | from ser.nr. | up to ser.nr. | var. information |
|--------------------------|-----|-------------|---|--------|------|--------------|---------------|------------------|
| X-X | 1 | 4.760-663.0 | Jet pipe packaged only for replacement | 1.000 | ST | 0000000000 | 0000000000 | |
| X-X | 2 | 7.303-129.0 | Screw 4x16 -10.9-R2R (K-In6Rd) | 6.000 | ST | 0000000000 | 0000000000 | |
| | 3 | 5.321-855.0 | Handhold few jet pipe with welding bolt | 1.000 | ST | | | VERSION 2 |
| | 3 | 5.321-691.0 | Handhold few jet pipe | 1.000 | ST | 0000000000 | 0000000000 | VERSION 1 |
| X-X | 4 | 2.880-296.0 | Spare part set O-Ring seal 5x | 1.000 | ST | 0000000000 | 0000000000 | |
| X-X | 5 | 7.401-915.0 | Sphere 2,5 G20 -1.4034 DIN 5401 | 20.000 | ST | 0000000000 | 0000000000 | |
| X-X | 6 | 6.362-532.0 | Grooved ring complete 1ST.R. | 1.000 | ST | 0000000000 | 0000000000 | |
| X-X | 7 | 6.362-524.0 | O-Ring seal 17,0 X 1,5 | 1.000 | ST | 0000000000 | 0000000000 | |

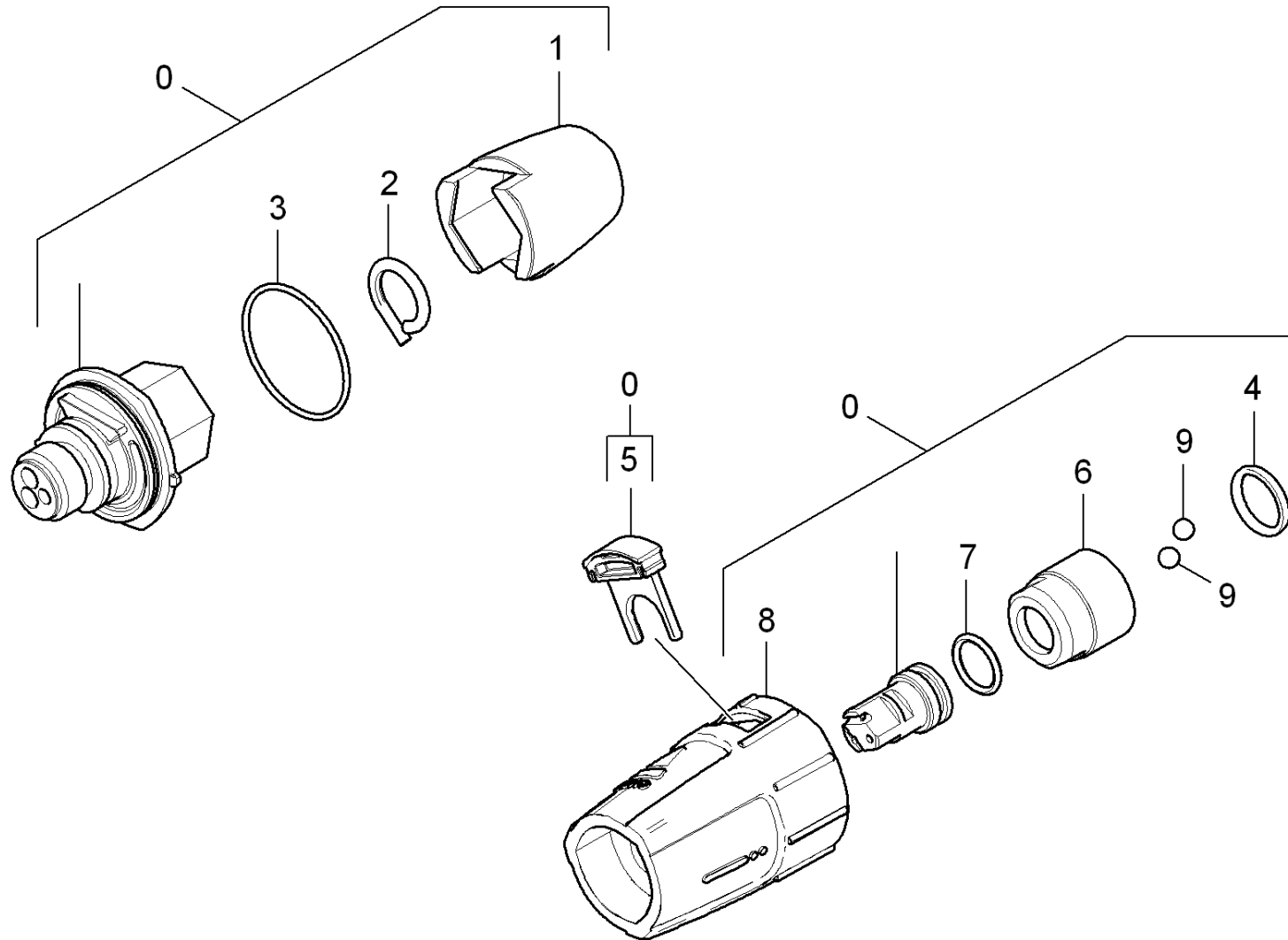
4 Spare part set O-Ring seal 5x (2.880-296.0)

| Pos | Material # | Name | Qty. | Unit |
|-----|-------------|-----------------------------------|-------|------|
| 10 | 6.362-957.0 | O-Ring seal 10,0 X 2,0-EPDM 85-90 | 5.000 | ST |



43 Nozzle (0.149-024.0)

| ET/VT (spare/wear parts) | Pos | Material # | Name | Qty. | Unit | from ser.nr. | up to ser.nr. |
|--|-----|-------------|-------------------------------|-------|------|--------------|---------------|
| | 1 | 4.402-042.0 | Screw union | 1.000 | ST | 0000000000 | 0000000000 |
| | 2 | 6.362-460.0 | O-Ring seal 14,0 X 2,5-NBR 70 | 1.000 | ST | 0000000000 | 0000000000 |
| | 3 | 5.030-528.0 | Moulded part | 1.000 | ST | 0000000000 | 0000000000 |
| | 4 | 7.401-902.0 | Sphere 5 G20 -1.4034 DIN 5401 | 2.000 | ST | 0000000000 | 0000000000 |
| | 5 | 5.042-405.0 | Holder | 1.000 | ST | 0000000000 | 0000000000 |
| | 6 | 7.777-999.0 | Stockpiling discontinued | 1.000 | ST | | |
| X-X | 7 | 6.362-480.0 | O-Ring seal 12,42x 1,78 | 1.000 | ST | 0000000000 | 0000000000 |
| | 8 | 5.415-605.0 | Triple jet nozzle 043 | 1.000 | ST | 0000000000 | 0000000000 |
| Position text: /1.150-610.0 | | | | | | | |
| | 8 | 5.415-603.0 | Triple jet nozzle 040 | 1.000 | ST | | |
| Position text: /1.150-611.0 / -614.0 /-616.0 / | | | | | | | |
| | 9 | 5.311-117.0 | Hexagon nut | 1.000 | ST | 0000000000 | 0000000000 |
| | 10 | 5.037-059.0 | Hook | 1.000 | ST | 0000000000 | 0000000000 |
| | 11 | 5.394-269.0 | Protection part | 1.000 | ST | 0000000000 | 0000000000 |

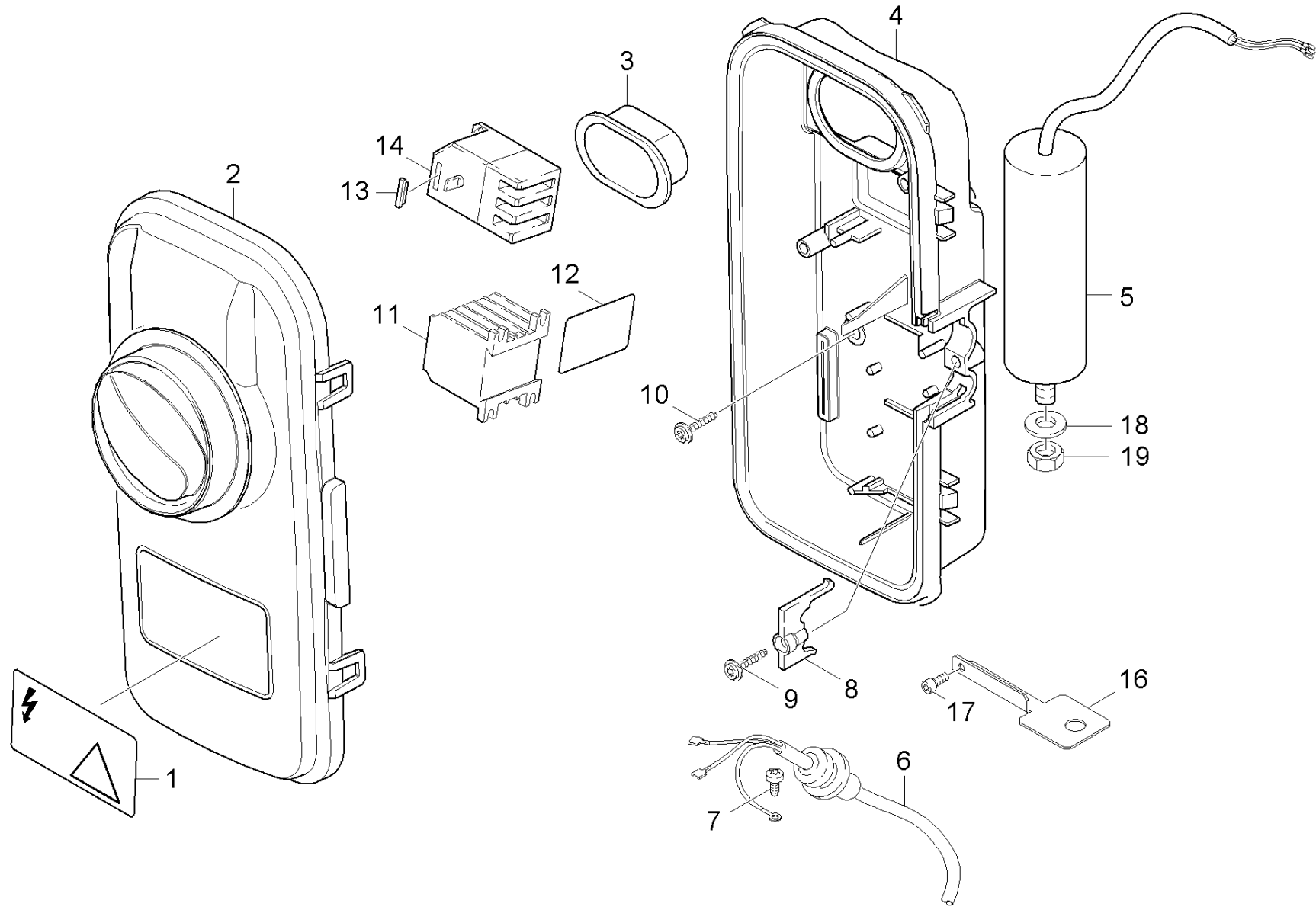


44 Nozzle (0.103-719.0)

| ET/VT (spare/wear parts) | Pos | Material # | Name | Qty. | Unit |
|--|-----|-------------|--|-------|------|
| X-X | 0 | 4.767-152.0 | Triple jet nozzle only for replacement 0 | 1.000 | ST |
| Position text: 1.150-610.0 / | | | | | |
| X-X | 0 | 4.767-150.0 | Triple jet nozzle only for replacement 0 | 1.000 | ST |
| Position text: 1.150-611.0 /-614.0 /-616.0 / | | | | | |
| | 1 | 5.394-530.0 | Protection part | 1.000 | ST |
| | 2 | 6.343-150.0 | Pin 03 | 1.000 | ST |
| | 3 | 6.362-409.0 | O-Ring seal 32,0 X 1,5 | 1.000 | ST |
| | 4 | 6.362-460.0 | O-Ring seal 14,0 X 2,5-NBR 70 | 1.000 | ST |
| | 5 | 5.321-884.0 | Clamp | 1.000 | ST |
| | 6 | 5.311-225.0 | Nut | 1.000 | ST |
| X-X | 7 | 6.362-480.0 | O-Ring seal 12,42x 1,78 | 1.000 | ST |
| | 8 | 5.394-859.0 | Protection part | 1.000 | ST |
| | 9 | 7.401-902.0 | Sphere 5 G20 -1.4034 DIN 5401 | 2.000 | ST |

50 Electric box (0.105-939.0)

| Pos | Material # | Name | Qty. | Unit | var. information |
|-----|-------------|--------------|-------|------|------------------|
| 51 | 0.127-244.0 | Electric box | 1.000 | ST | VERSION 1 |
| 52 | 0.105-940.0 | Electric box | 1.000 | ST | VERSION 2 |

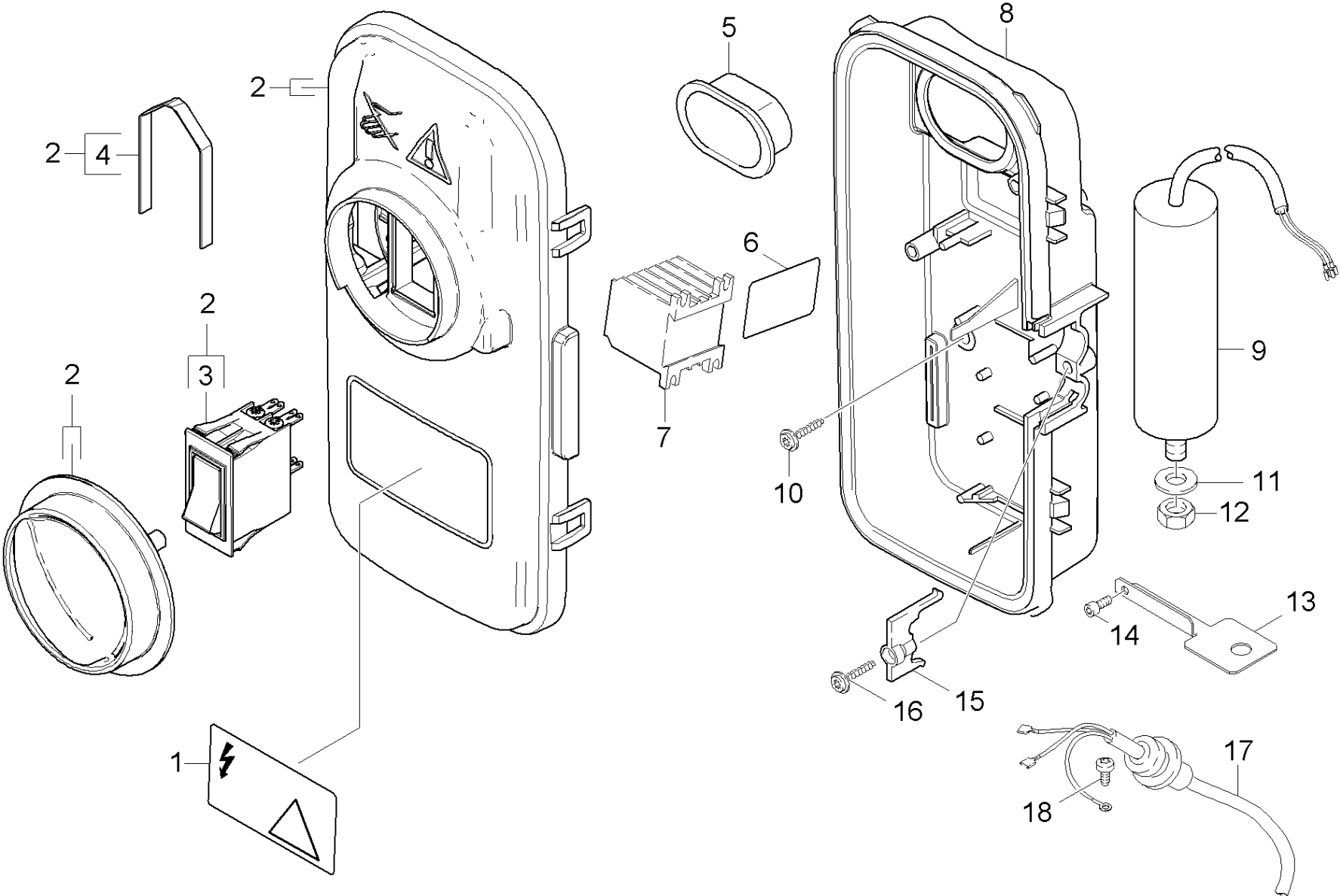


51 Electric box (0.127-244.0)

| ET/VT (spare/wear parts) | Pos | Material # | Name | Qty. | Unit | from ser.nr. | up to ser.nr. |
|--|-----|-------------|-----------------------------|-------|------|--------------|---------------|
| | 1 | 5.388-512.0 | Label | 1.000 | ST | 0000000000 | 0000000000 |
| | 2 | 4.063-810.0 | Cover completely | 1.000 | ST | 0000000000 | 0000000000 |
| | 3 | 5.365-181.0 | Profile gasket | 1.000 | ST | 0000000000 | 0000000000 |
| | 4 | 5.064-242.0 | Housing with bore | 1.000 | ST | 0000000000 | 0000000000 |
| | 5 | 6.661-254.0 | Capacitor 80 µF | 1.000 | ST | 0000000000 | 0000000000 |
| Position text: 1.150-610.0 | | | | | | | |
| | 5 | 6.661-274.0 | Capacitor 100 µF | 1.000 | ST | | |
| Position text: /1.150-611.0 / -614.0 /-616.0 / | | | | | | | |
| | 6 | 6.649-361.0 | Cable with plug GFCI | 1.000 | ST | 0000000000 | 0000000000 |
| Position text: /1.150-611.0 / -614.0 / | | | | | | | |
| | 6 | 6.649-359.0 | Cable with plug GFCI | 1.000 | ST | 0000000000 | 0000000000 |
| Position text: 1.150-610.0 | | | | | | | |
| | 6 | 6.649-467.0 | Cable without plug | 1.000 | ST | | |
| Position text: 1.150-616.0 | | | | | | | |
| | 7 | 7.303-031.0 | Screw M4x10 -St-P2R (In6Rd) | 1.000 | ST | 0000000000 | 0000000000 |
| | 8 | 5.263-058.0 | Tensioning part | 1.000 | ST | 0000000000 | 0000000000 |
| Position text: 1.150-610.0 /-616.0 | | | | | | | |
| | 8 | 5.263-051.0 | Tensioning part | 1.000 | ST | | |
| Position text: 1.150-611.0 /-614.0 / | | | | | | | |
| | 9 | 6.303-200.0 | Screw 5x25-IN6RD | 1.000 | ST | 0000000000 | 0000000000 |
| | 10 | 6.303-153.0 | Screw M5x15-ST-R2R (IN6RD) | 3.000 | ST | 0000000000 | 0000000000 |
| | 11 | 6.632-421.0 | Contactactor 7,5 kW / 220 V | 1.000 | ST | 0000000000 | 0000000000 |
| Position text: 1.150-610.0 | | | | | | | |
| X-X | 11 | 6.632-422.0 | Contactactor 7,5 kW / 115 V | 1.000 | ST | 0000000000 | 0000000000 |
| Position text: 1.150-611.0 / -614.0 /-616.0 | | | | | | | |

51 Electric box (0.127-244.0)

| ET/VT (spare/wear parts) | Pos | Material # | Name | Qty. | Unit | from ser.nr. | up to ser.nr. |
|--------------------------|-----|-------------|--------------------------------|-------|------|--------------|---------------|
| | 12 | 5.048-251.0 | Plate | 1.000 | ST | 0000000000 | 0000000000 |
| X-X | 13 | 6.630-049.0 | Cap | 1.000 | ST | 0000000000 | 0000000000 |
| X-X | 14 | 6.631-196.0 | Motor protecting switch | 1.000 | ST | 0000000000 | 0000000000 |
| | 16 | 5.043-050.0 | Holder for capacitor | 1.000 | ST | | |
| X-X | 17 | 7.303-037.0 | Screw M5x10 -St-P2R (In6Rd) | 1.000 | ST | | |
| X-X | 18 | 7.312-054.0 | Washer 12-A2 ISO 7090 | 1.000 | ST | | |
| | 19 | 7.311-071.0 | Hexagon nut M12-A2-70 ISO 4032 | 1.000 | ST | | |



52 Electric box (0.105-940.0)

| ET/VT (spare/wear parts) | Pos | Material # | Name | Qty. | Unit |
|--|-----|-------------|--------------------------------|-------|------|
| | 1 | 5.388-512.0 | Label | 1.000 | ST |
| | 2 | 4.744-229.0 | Switch kpl. | 1.000 | ST |
| Position text: 1.150-610.0 /-611.0 /-614.0 / | | | | | |
| X-X | 3 | 6.632-412.0 | Switch 14 A | 1.000 | ST |
| | 4 | 5.263-085.0 | Tensioning part | 1.000 | ST |
| | 5 | 5.365-181.0 | Profile gasket | 1.000 | ST |
| | 6 | 5.048-251.0 | Plate | 1.000 | ST |
| X-X | 7 | 6.632-422.0 | Contactactor 7,5 kW / 115 V | 1.000 | ST |
| Position text: 1.150-611.0 /-614.0 / | | | | | |
| | 7 | 6.632-421.0 | Contactactor 7,5 kW / 220 V | 1.000 | ST |
| Position text: 1.150-610.0 | | | | | |
| | 8 | 5.061-598.0 | Housing electric control box | 1.000 | ST |
| | 9 | 6.661-254.0 | Capacitor 80 µF | 1.000 | ST |
| Position text: 1.150-610.0 | | | | | |
| | 9 | 6.661-274.0 | Capacitor 100 µF | 1.000 | ST |
| Position text: 1.150-611.0 /-614.0 / | | | | | |
| | 10 | 6.303-153.0 | Screw M5x15-ST-R2R (IN6RD) | 3.000 | ST |
| X-X | 11 | 7.312-054.0 | Washer 12-A2 ISO 7090 | 1.000 | ST |
| | 12 | 7.311-071.0 | Hexagon nut M12-A2-70 ISO 4032 | 1.000 | ST |
| | 13 | 5.043-050.0 | Holder for capacitor | 1.000 | ST |
| X-X | 14 | 7.303-037.0 | Screw M5x10 -St-P2R (In6Rd) | 1.000 | ST |
| | 15 | 5.263-058.0 | Tensioning part | 1.000 | ST |
| Position text: 1.150-610.0 | | | | | |
| | 15 | 5.263-051.0 | Tensioning part | 1.000 | ST |
| Position text: 1.150-611.0 /-614.0 / | | | | | |

52 Electric box (0.105-940.0)

| ET/VT (spare/wear parts) | Pos | Material # | Name | Qty. | Unit |
|--------------------------------------|-----|-------------|-----------------------------|-------|------|
| | 16 | 6.303-200.0 | Screw 5x25-IN6RD | 1.000 | ST |
| | 17 | 6.649-361.0 | Cable with plug GFCI | 1.000 | ST |
| Position text: 1.150-611.0 /-614.0 / | | | | | |
| | 17 | 6.649-359.0 | Cable with plug GFCI | 1.000 | ST |
| Position text: 1.150-610.0 | | | | | |
| | 18 | 7.303-031.0 | Screw M4x10 -St-P2R (In6Rd) | 1.000 | ST |