

**Spare parts list**  
**(5.955-875.0) Spare parts list HDS 700 B**

## DE HINWEISE

### Weitere Sprachen:

Diese Ersatzteilliste ist in weiteren Sprachen erhältlich. Sie erhalten diese unter [www.kaercher.com](http://www.kaercher.com) im Bereich Service. Die Schreibweise der Teilenummer, z. B. 75456380, entspricht der Teilenummer 7.545-638.0.

### Mengenangaben:

Die Mengenangaben in der Ersatzteilliste entsprechen den in der Baugruppe verbauten Stückzahlen der Bauteile.

### Meterware:

Ersatzteile welche als Meterware geliefert werden sind auf Einbaulänge selbst zu kürzen. Die Stückzahlen sind als Mindestbestellmenge =1m angegeben und müssen je nach Bedarf auf weitere volle Meterzahlen erhöht werden.

### Versionen/ Werknummern:

Sind Versionen oder Werknummern in der Ersatzteilliste angegeben, ist anhand dieser vor Bestellung zu prüfen, welches Bauteil für ihr Gerät verwendet werden muss.

### Lackierte Teile:

Bei Bestellungen von lackierten Teilen welche in der Ersatzteilliste nicht in verschiedenen Farben ausgewiesen sind, ist zusätzlich die Farbnummer oder Farbe mit anzugeben.

### Technische Änderungen:

Technische Änderungen sowie das Recht der ausschließlichen Auswertung unseres geistigen Eigentums behalten wir uns vor.

## EN INSTRUCTIONS

### Other languages:

This list of spare parts is also available in other languages. You can get this list from [www.kaercher.com](http://www.kaercher.com) in the Service division. The designation of the part number e.g. 75456380 is equal to 7.545-638.0.

### Quantity details:

The quantity details in the spare parts list correspond to the number of pieces of the component installed in the assembly group.

### Piece goods:

Spare parts that are sold as piece goods are to be cut to the desired length. The quantities have been indicated as minimum order quantity =1m and must be rounded off to the full meter figure depending on your requirements.

### Version/ Plant numbers:

If version or plant numbers are mentioned in the spare parts list, then use the same to check before ordering which spare part needs to be used for your appliance.

### Painted parts:

While ordering painted parts that are not mentioned in the spare parts list in their colour variations, please mention the colour number or the colour you require.

### Technical changes:

We reserve the right to make technical changes as well as the right to exclusive use of our intellectual property.

## FR REMARQUES

### Autres langues:

Cette liste de pièces de rechange est disponible en autres langues. Cela est disponible sous [www.kaercher.com](http://www.kaercher.com) dans le menu Service. La désignation du numéro de pièce, par ex. 75456380, correspond au numéro de pièce 7.545-638.0.

### Indications de quantité:

Les indications de quantité dans la liste de pièces de rechange correspondre aux nombres de pièces des composant utilisées dans la construction.

### Matériel au mètre:

Les pièces de rechange qui sont livrées au mètre doivent être raccourcies à longueur souhaitée par l'acheteur même. Les nombres des pièces sont indiquées en quantité de commande minimale = 1m et doivent être augmentés selon le besoin à une chiffre de mètre complète.

### Versions/ Numéros d'usine:

Lorsqu'il sont indiquées des versions ou des numéros d'usine dans la liste de pièces de rechange, vous devez vérifier que composant doit être utilisé pour votre appareil.

### Pièces laquées:

Pour commander des pièces laquées, où les différentes couleurs ne sont pas indiquées dans la liste des pièces de rechange, vous devez indiquer en plus le numéro de la couleur ou seulement la couleur.

### Modifications techniques:

Nous nous réservons la possibilité des modifications techniques ainsi le droit d'exploitation exclusive de notre propriété intellectuelle.

## IT AVVERTENZE

### Altre lingue:

Il presente elenco di parti di ricambio è disponibile sul nostro sito Web anche in altre lingue: sotto [www.kaercher.com](http://www.kaercher.com) alla voce "Service".

L'indicazione del codice pezzo, ad es. 75456380, corrisponde al codice pezzo 7.545-638.0

### Indicazioni di quantità:

Le indicazioni di quantità riportate dall'elenco "parti di ricambio" corrispondono al numero delle singole componenti contenute nella rispettiva unità.

### Merce a metro:

Le parti di ricambio fornite come "merce a metro" devono venire in seguito accorciate alla lunghezza necessaria per il montaggio. La quantità unitaria è indicata come "quantità minima di ordinazione = 1m" e deve all'occorrenza venire moltiplicata per il numero intero di metri necessari.

### Versioni / Numeri di fabbricazione:

Quando l'elenco "parti di ricambio" riporta diverse versioni o numeri di fabbricazione, confrontare la versione o il numero di fabbricazione del ricambio desiderato con quelle/i presenti nell'elenco e indicarla/o al momento dell'ordinazione.

### Parti di ricambio verniciate:

Nel caso di ricambi verniciati, se l'elenco parti di ricambio non ne riporta espressamente i diversi colori, al momento dell'ordinazione è necessario indicare anche il colore o il numero del colore desiderato.

### Modifiche tecniche:

Ci riserviamo il diritto di apportare modifiche tecniche così come il diritto di utilizzo esclusivo della nostra proprietà intellettuale.

## ES INDICACIONES

### Otros idiomas:

La lista de piezas de repuesto se puede adquirir en otros idiomas. La puede adquirir en [www.kaercher.com](http://www.kaercher.com) en el área de servicios.

La notación de los números de las piezas, p.ej. 75456380 corresponde al número de pieza 7.545-638.0.

### Cantidades:

Las indicaciones de cantidades de la lista de piezas de repuesto corresponden al número de piezas montadas en el componente.

### Mercancía por metros:

Las piezas de repuesto que se suministran por metros se pueden cortar al largo deseado. La unidad mínima de pedido es de = 1 m y el número de metros completos se puede aumentar según necesidad.

### Versiones/números de fábrica:

Si se indica la versión o número de fábrica en la lista de piezas de repuesto, se debe comprobar en ella la pieza a usar para su aparato antes de realizar el pedido.

### Piezas lacadas:

Al realizar pedidos de piezas lacadas que no estén indicadas en los diferentes colores en la lista de piezas de repuesto, se debe indicar también la referencia del color o el color.

### Modificaciones técnicas:

Reservados los derechos de realizar modificaciones técnicas y aprovechar nuestra propiedad intelectual.

## PL WSKAZÓWKI

### Pozostałe języki:

Ta lista części zamiennych jest dostępna w także w innych językach. Mogą ją Państwo pobrać ze strony [www.kaercher.com](http://www.kaercher.com) w dziale Serwis.

Sposób zapisywania numeru części, np. 75456380, odpowiada numerowi części 7.545-638.0.

### Dane ilości:

Dane ilości podane w liście części zamiennych odpowiadają liczbie sztuk podzespołów tworzących dany moduł.

### Towar sprzedawany na metry:

Części zamienne dostarczane jako towar sprzedawany na metry po zamontowaniu należy samodzielnie skrócić do potrzebnej długości. Liczba sztuk podana jest jako minimalna ilość zamówienia = 1m i w zależności od potrzeb zwiększa się ją o kolejne pełne metry.

### Wersje/ Numer zakładu:

Jeżeli w liście części zamiennych podane są wersje lub numery zakładu, przed zamówieniem na ich podstawie należy sprawdzić, który podzespół stosuje się w Państwa urządzeniu.

### Części lakierowane:

W przypadku zamówień części lakierowanych, które w liście części zamiennych nie podano w wielu kolorach, należy dodatkowo zaznaczyć nr koloru lub kolor.

### Zmiany techniczne:

Zastrzegamy sobie prawo do zmian technicznych oraz wyłącznego wykorzystywania naszej własności intelektualnej.

## **RU УКАЗАНИЯ:**

### **Другие языки:**

Данный список запасных частей также доступен на других языках. Вы найдете его на сайте [www.kaercher.com](http://www.kaercher.com) в разделе Service  
Маркировка номера детали, например, 75456380, соответствует номеру детали 7.545-638.0.

### **Указание количества:**

Количественные данные в списке запасных частей соответствуют числу компонентов, входящих в состав узлов.

### **Товар, продаваемый на метры:**

Запасные части, продающиеся на метры, необходимо обрезать до нужной длины. Число изделий указано в виде минимального объема заказа = 1м и их количество можно округлить до требуемого по мере необходимости.

### **Варианты исполнения/заводские номера:**

Если варианты исполнения или заводские номера указаны в списке запасных частей, то перед заказом необходимо проверить, какая деталь подходит для вашего устройства.

### **Лакированные детали:**

При заказе лакированных деталей, варианты расцветки которых не указаны в списке запасных частей, необходимо дополнительно указать номер цвета или необходимый для вас цвет.

### **Технические изменения:**

Мы оставляем за собой право на технические изменения, а также право на исключительное использование нашей интеллектуальной собственности.

## Table of contents

---

<b>Spare parts list HDS 700 B (5.955-875.0)</b> .....	<b>6</b>
10 Individual parts.....	7
11 Frame.....	8
12 Control panel.....	10
20 Pump set.....	13
21 Piston.....	14
22 Chemistry.....	16
10 Spare part set aspiration chemistry (2.883-291.0).....	18
23 Valves.....	19
30 Motor.....	22
31 Motor.....	23
32 Motor.....	25
33 Transmission.....	27
35 Generator.....	29
40 Blower.....	31
50 Fuel system.....	33
60 Electric control box.....	36
70 Flow heater.....	38
71 Flow heater.....	39
72 Burner cover.....	42
73 Heating coil.....	43
74 Burner bottom.....	45
80 Safety system.....	47
90 Accessories.....	49
91 Hand trigger gun.....	50
100 HDS 1290 GUN KIT (2.883-014.0).....	52
92 Jet pipe.....	53
7 Spare part set O-Ring seal 5x (2.880-296.0).....	55
93 Jet pipe.....	56
4 Spare part set O-Ring seal 5x (2.880-296.0).....	58
94 High pressure hose.....	59
2 Spare part set O-Ring seal 5x (2.880-296.0).....	61
95 Triple jet nozzle.....	62
96 Nozzle.....	64
100 Pressure switch.....	66

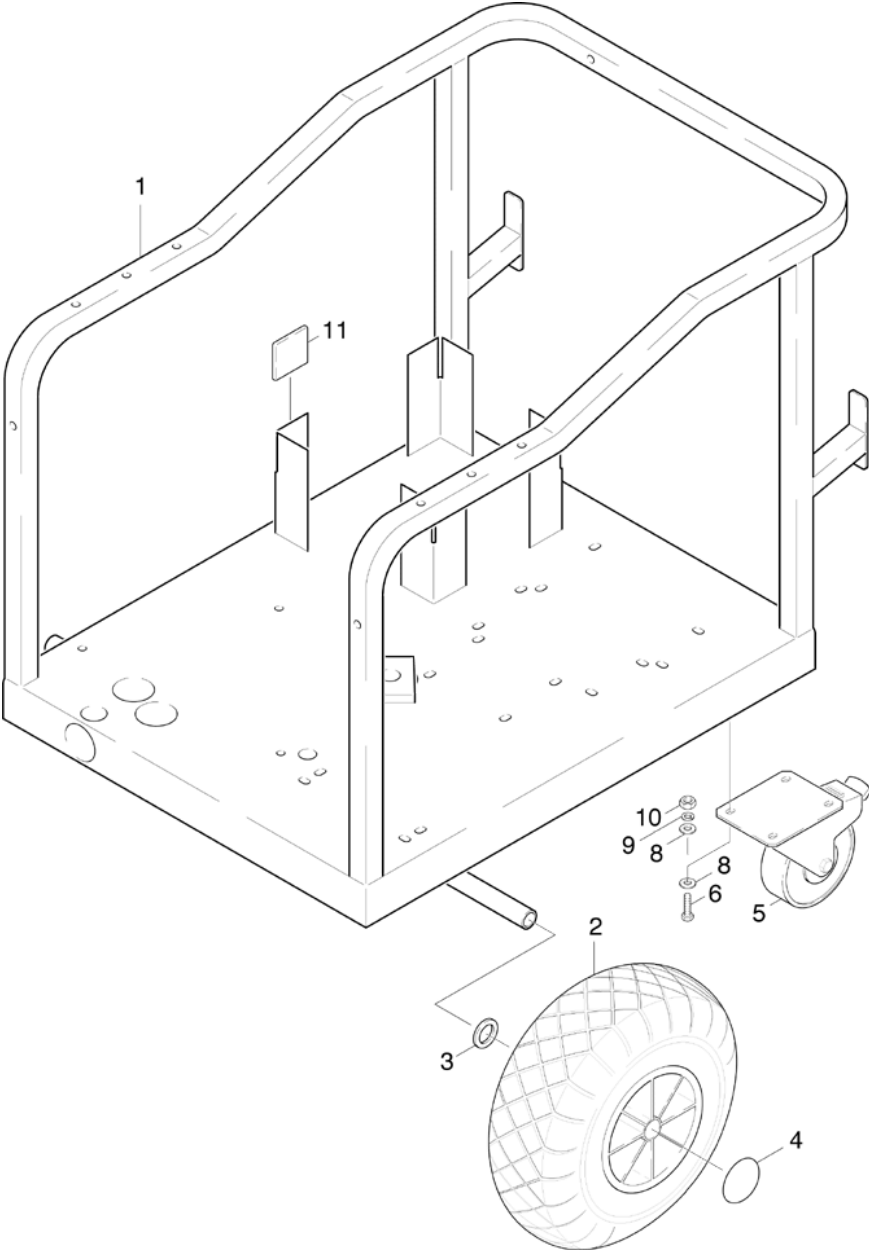
**Spare parts list HDS 700 B (5.955-875.0)**

Pos	Name	Qty.	Unit	from ser.nr.	up to ser.nr.
10	Individual parts	1.000	ST	0000000000	0000000000
20	Pump set	1.000	ST	0000000000	0000000000
30	Motor	1.000	ST	0000000000	0000000000
40	Blower	1.000	ST	0000000000	0000000000
50	Fuel system	1.000	ST	0000000000	0000000000
60	Electric control box	1.000	ST	0000000000	0000000000
70	Flow heater	1.000	ST	0000000000	0000000000
80	Safety system	1.000	ST	0000000000	0000000000
90	Accessories	1.000	ST	0000000000	0000000000
100	Pressure switch	1.000	ST	0000000000	0000000000

## 10 Individual parts

---

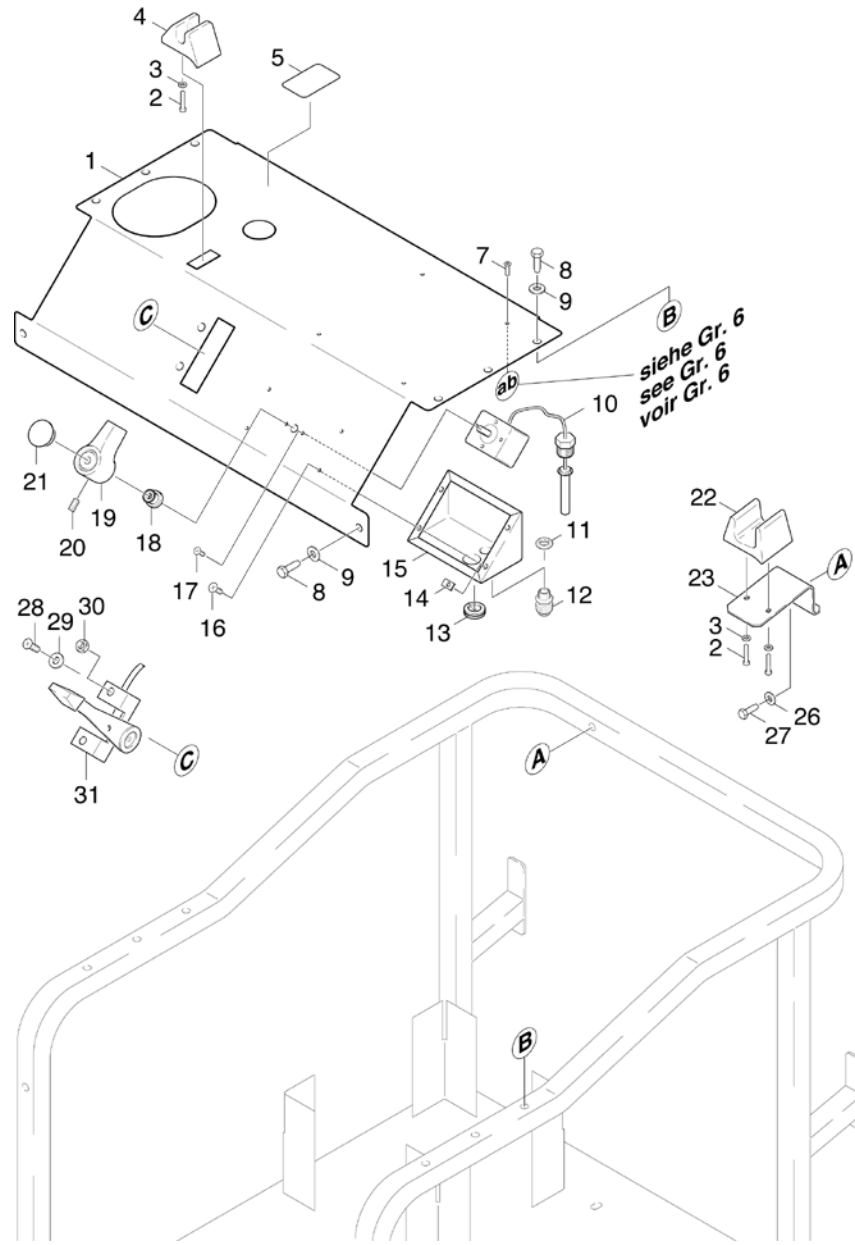
Pos	Name	Qty.	Unit	from ser.nr.	up to ser.nr.
11	Frame	1.000	ST	0000000000	0000000000
12	Control panel	1.000	ST	0000000000	0000000000





11 Frame

ET/VT (spare/wear parts)	Pos	Material #	Name	Qty.	Unit	from ser.nr.	up to ser.nr.
	1	4.050-327.0	Frame complete	1.000	ST	0000000000	0000000000
X-X	2	6.435-308.0	Wheel	2.000	ST	0000000000	0000000000
	3	6.362-936.0	Spacer washer 6-32	2.000	ST	0000000000	0000000000
X-X	4	6.343-137.0	Quick-fastener	2.000	ST	0000000000	0000000000
X-X	5	6.435-116.0	Castor	1.000	ST	0000000000	0000000000
	6	6.965-019.0	Screw	4.000	ST	0000000000	0000000000
	8		Stockpiling discontinued	8.000	ST	0000000000	0000000000
	9	6.965-012.0	Lock washer 1/4"-vz	4.000	ST	0000000000	0000000000
	10	6.310-100.0	Nut	4.000	ST	0000000000	0000000000
	11		Stockpiling discontinued	8.000	ST	0000000000	0000000000



## 12 Control panel

ET/VT (spare/wear parts)	Pos	Material #	Name	Qty.	Unit	from ser.nr.	up to ser.nr.
	1		Stockpiling discontinued	1.000	ST	0000000000	0000000000
Position text: / 1.077-122.0 / -132.0							
	1	5.841-336.0	Control panel	1.000	ST	0000000000	0000000000
Position text: / 1.077-102.0 / -112.0							
	2	7.303-071.0	Sheet metal screw ST4,2X9,5 -St-A2K (In	3.000	ST	0000000000	0000000000
	3	7.312-001.0	Washer 4 -200HV-A3E ISO 7089	3.000	ST	0000000000	0000000000
	4	5.042-406.0	Holder	1.000	ST	0000000000	0000000000
	5	5.389-529.0	Label DANGER HOT	1.000	ST	0000000000	0000000000
	7		Stockpiling discontinued	4.000	ST	0000000000	0000000000
	8	6.303-105.0	Screw M6x20-ST-A2R DIN 7500-1	8.000	ST	0000000000	0000000000
	9	7.312-291.0	Washer 6-200HV-A2R ISO7093-1	8.000	ST	0000000000	0000000000
X	10	6.685-871.0	Thermostat	1.000	ST	0000000000	0000000000
	11	6.641-366.0	Locknut PG 9	1.000	ST	0000000000	0000000000
	12	6.641-355.0	Cable gland PG9	1.000	ST	0000000000	0000000000
	13	5.365-109.0	Profile gasket	1.000	ST	0000000000	0000000000
	14		Stockpiling discontinued	4.000	ST	0000000000	0000000000
	15		Stockpiling discontinued	1.000	ST	0000000000	0000000000
	16		Stockpiling discontinued	4.000	ST	0000000000	0000000000
	17	7.306-513.0	Cylinder head screw M 4x10-A2-70 sw DIN	2.000	ST	0000000000	0000000000
	18	5.365-152.0	Profile gasket	1.000	ST	0000000000	0000000000
X-X	19	5.321-026.0	Handhold	1.000	ST	0000000000	0000000000
	20	7.307-181.0	Threaded pin M5x10-14H-A2E ISO 7434	1.000	ST	0000000000	0000000000
X	21	5.132-010.0	Plug	1.000	ST	0000000000	0000000000
	22	5.042-402.0	Holder	1.000	ST	0000000000	0000000000
	23	5.018-888.0	Angle	1.000	ST	0000000000	0000000000

## 12 Control panel

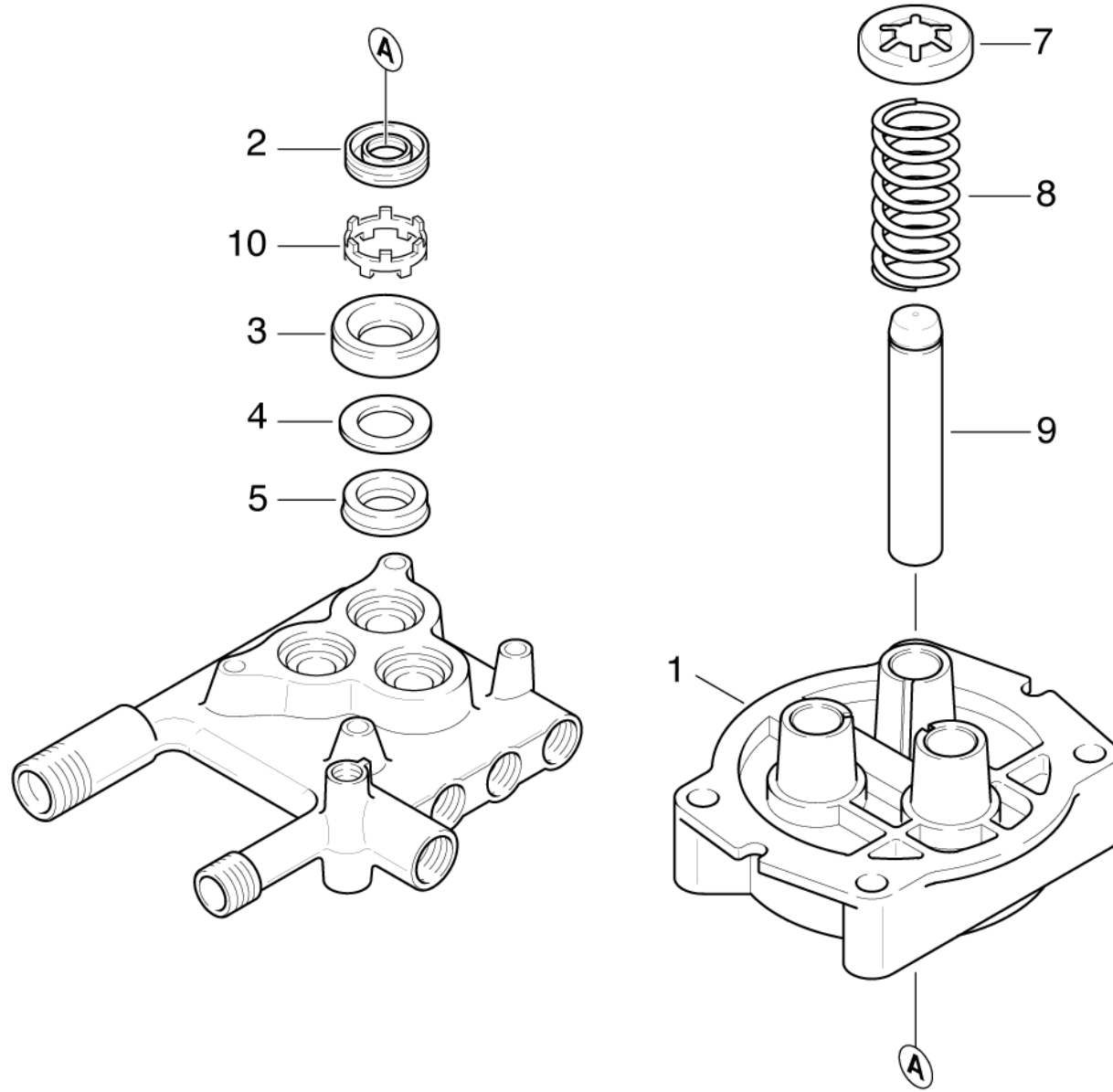
ET/VT (spare/wear parts)	Pos	Material #	Name	Qty.	Unit	from ser.nr.	up to ser.nr.
	26	7.312-277.0	Washer 8-200HV-A2E ISO7093-1	1.000	ST	0000000000	0000000000
	27	7.304-395.0	Hexagonal head screw M8x16-8.8-A2E ISO	1.000	ST	0000000000	0000000000
X	28	7.306-443.0	Cylinder head screw M5x12-4.8-A2E ISO 1	2.000	ST	0000000000	0000000000
	29	7.312-002.0	Washer 5-200HV-A3E ISO 7090	2.000	ST	0000000000	0000000000
Position text: / 1.077-122.0 / -132.0							
X-X	30	7.311-421.0	Hexagon nut M 5-04-A2E ISO 10511	2.000	ST	0000000000	0000000000
Position text: / 1.077-122.0 / -132.0							
	31	9.185-002.0	Throttle control	1.000	ST	0000000000	0000000000
Position text: / 1.077-122.0 / -132.0							

## 20 Pump set

---

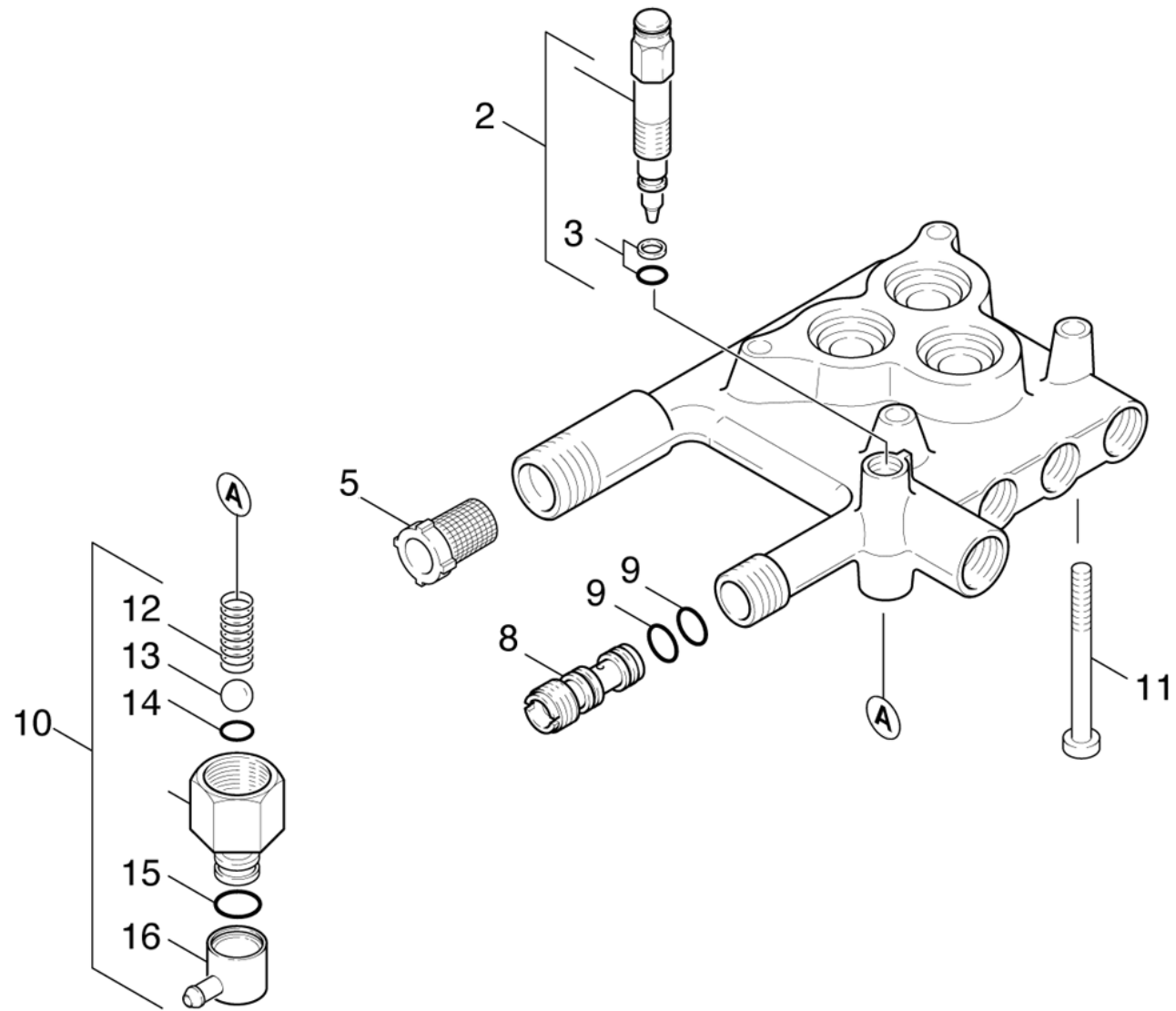
Pos	Name	Qty.	Unit	from ser.nr.	up to ser.nr.
21	Piston	1.000	ST	0000000000	0000000000
22	Chemistry	1.000	ST	0000000000	0000000000
23	Valves	1.000	ST	0000000000	0000000000

---



**21 Piston**

ET/VT (spare/wear parts)	Pos	Material #	Name	Qty.	Unit	from ser.nr.	up to ser.nr.
	1	5.060-369.0	Housing thrust guidance	1.000	ST	0000000000	0000000000
X-X	2	6.365-340.0	Grooved ring 14X22X5/7	3.000	ST	0000000000	0000000000
X	3	5.115-466.0	Washer	3.000	ST	0000000000	0000000000
X-X	4	5.115-465.0	Washer	3.000	ST	0000000000	0000000000
X-X	5	6.365-341.0	Grooved ring	3.000	ST	0000000000	0000000000
	7	5.030-625.0	Moulded part	3.000	ST	0000000000	0000000000
	8	5.332-251.0	Helical spring	3.000	ST	0000000000	0000000000
	9	5.553-231.0	Piston	3.000	ST	0000000000	0000000000
	10	5.110-618.0	Sleeve	3.000	ST	0000000000	0000000000



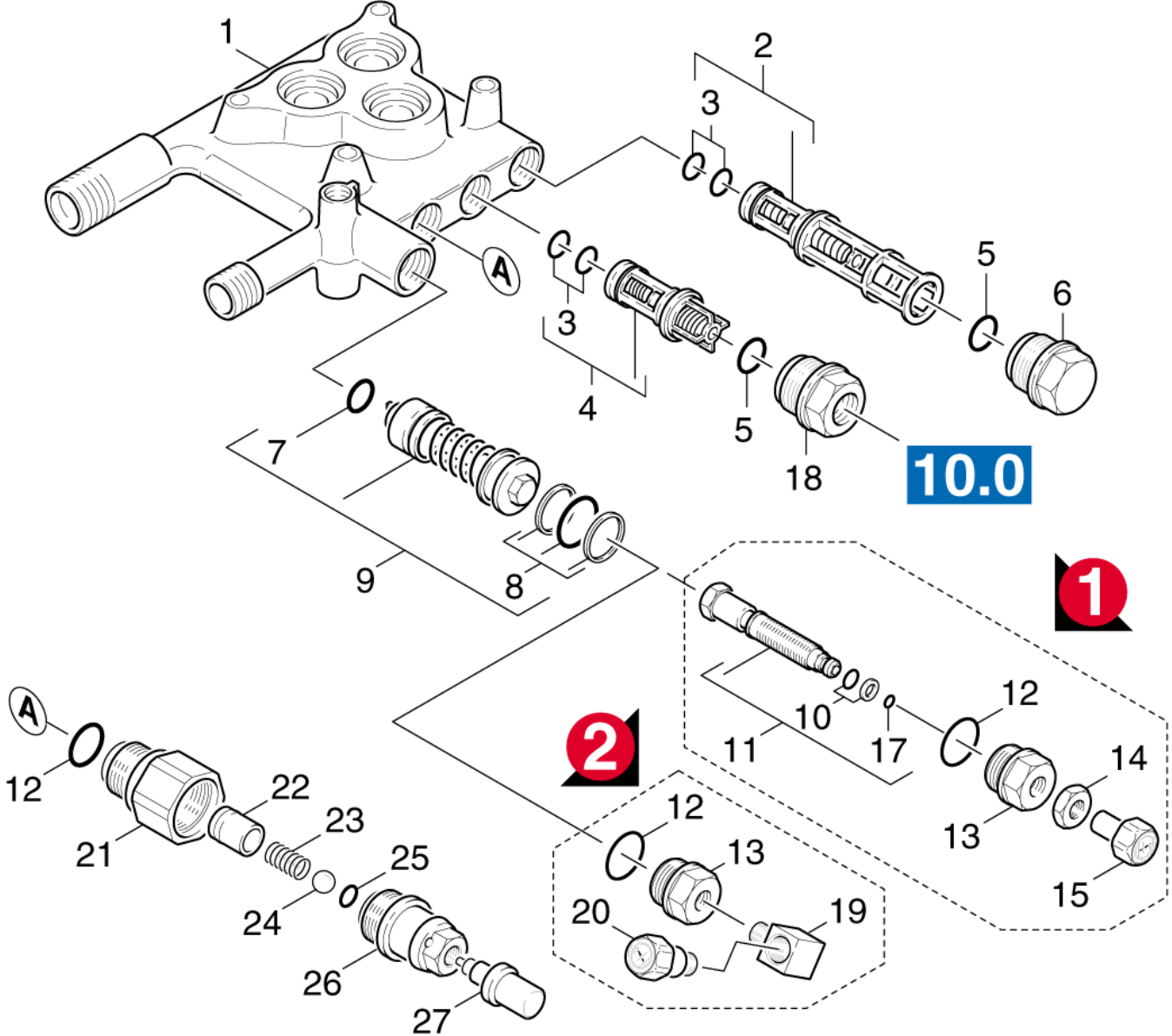


## 22 Chemistry

ET/VT (spare/wear parts)	Pos	Material #	Name	Qty.	Unit	from ser.nr.	up to ser.nr.
	2	4.291-004.0	Spindle only for replacement	1.000	ST	0000000000	0000000000
X-X	3	6.363-037.0	O-Ring seal complete 1ST.-R.	1.000	ST	0000000000	0000000000
	4	5.550-207.0	Cylinder head MS	1.000	ST	0000000000	0000000000
X-X	5	6.414-252.0	Strainer	1.000	ST	0000000000	0000000000
	8	5.769-095.0	Nozzle insert	1.000	ST	0000000000	0000000000
X-X	9	6.362-384.0	O-Ring seal 9x1,5 - NBR 70	2.000	ST	0000000000	0000000000
	10	2.883-291.0	Spare part set aspiration chemistry	1.000	ST	0000000000	0000000000
	11	7.306-154.0	Screw M8x75 -8.8-A3R (In6Rd)	4.000	ST	0000000000	0000000000
	12	5.332-258.0	Helical spring	1.000	ST	0000000000	0000000000
	13	7.401-908.0	Sphere 7 G300 -1.4301 DIN 5401	1.000	ST	0000000000	0000000000
X-X	14	6.362-383.0	O-Ring seal 6,0 X 2,0	1.000	ST	0000000000	0000000000
	15	6.362-101.0	O-Ring seal 8 X 2	1.000	ST	0000000000	0000000000
	16	5.443-338.0	Hose stem	1.000	ST	0000000000	0000000000

10 Spare part set aspiration chemistry (2.883-291.0)

ET/VT (spare/wear parts)	Pos	Material #	Name	Qty.	Unit	from ser.nr.	up to ser.nr.
	10	5.332-258.0	Helical spring	1.000	ST	0000000000	0000000000
	20	5.443-338.0	Hose stem	1.000	ST	0000000000	0000000000
	30	5.446-006.0	Hose coupling	1.000	ST	0000000000	0000000000
	40	6.288-072.0	Silicon grease	1.000	ST	0000000000	0000000000
	50	6.362-101.0	O-Ring seal 8 X 2	1.000	ST	0000000000	0000000000
X-X	60	6.362-383.0	O-Ring seal 6,0 X 2,0	1.000	ST	0000000000	0000000000
X-X	70	6.590-002.0	Bag PE 150x230 mm	1.000	ST	0000000000	0000000000
	80	7.401-909.0	Sphere 7 G40 -1.4401 DIN 5401	1.000	ST	0000000000	0000000000



## 23 Valves

ET/VT (spare/wear parts)	Pos	Material #	Name	Qty.	Unit	from ser.nr.	up to ser.nr.
	1	5.550-207.0	Cylinder head MS	1.000	ST	0000000000	0000000000
	2	2.884-904.0	Valve ( 2 Stück)	1.000	ST	0000000000	0000000000
	3	6.362-566.0	O-Ring seal 8,73X 1,78	6.000	ST	0000000000	0000000000
	4	4.580-276.0	Valve complete short	1.000	ST	0000000000	0000000000
X	5	6.362-078.0	O-Ring seal 13,3x2,4	3.000	ST	0000000000	0000000000
	6	5.583-099.0	Valve screw	2.000	ST	0000000000	0000000000
	7	6.362-169.0	O-Ring seal 12,0 X 2,0	1.000	ST	0000000000	0000000000
X-X	8	6.362-921.0	O-Ring seal complete	1.000	ST	0000000000	0000000000
	9	4.580-236.0	Overflow valve only for replacement	1.000	ST	0000000000	0000000000
	10	6.362-719.0	O-Ring seal complete 1ST.R.	1.000	ST	0000000000	0000000000
	11	4.291-003.0	Spindle only for replacement	1.000	ST	0000000000	0000000000
X	12	6.362-079.0	O-Ring seal 18,0 X 2,5	1.000	ST	0000000000	0000000000
	13	9.154-002.0	Shaped screw	1.000	ST	0000000000	0000000000
	14	6.310-058.0	Hexagon nut M 8x0,75	1.000	ST	0000000000	0000000000
	15	6.421-202.0	Pressure gauge	1.000	ST	0000000000	0000000000
	17	7.362-505.0	O-Ring seal 3,75x1,6-NBR 70 DIN 3770	1.000	ST	0000000000	0000000000
	18	5.310-115.0	Nut	1.000	ST	0000000000	0000000000
	19	7.387-907.0	Elbow 1/4"	1.000	ST	0000000000	0000000000
	20	9.166-001.0	Pressure gauge	1.000	ST	0000000000	0000000000
	21	5.031-563.0	Joining piece	1.000	ST	0000000000	0000000000
	22	5.028-692.0	Tube	1.000	ST	0000000000	0000000000
	23	5.332-365.0	Helical spring	1.000	ST	0000000000	0000000000
	24	7.401-908.0	Sphere 7 G300 -1.4301 DIN 5401	1.000	ST	0000000000	0000000000
X-X	25	6.362-383.0	O-Ring seal 6,0 X 2,0	1.000	ST	0000000000	0000000000
	26	5.411-142.0	Screw plug	1.000	ST	0000000000	0000000000

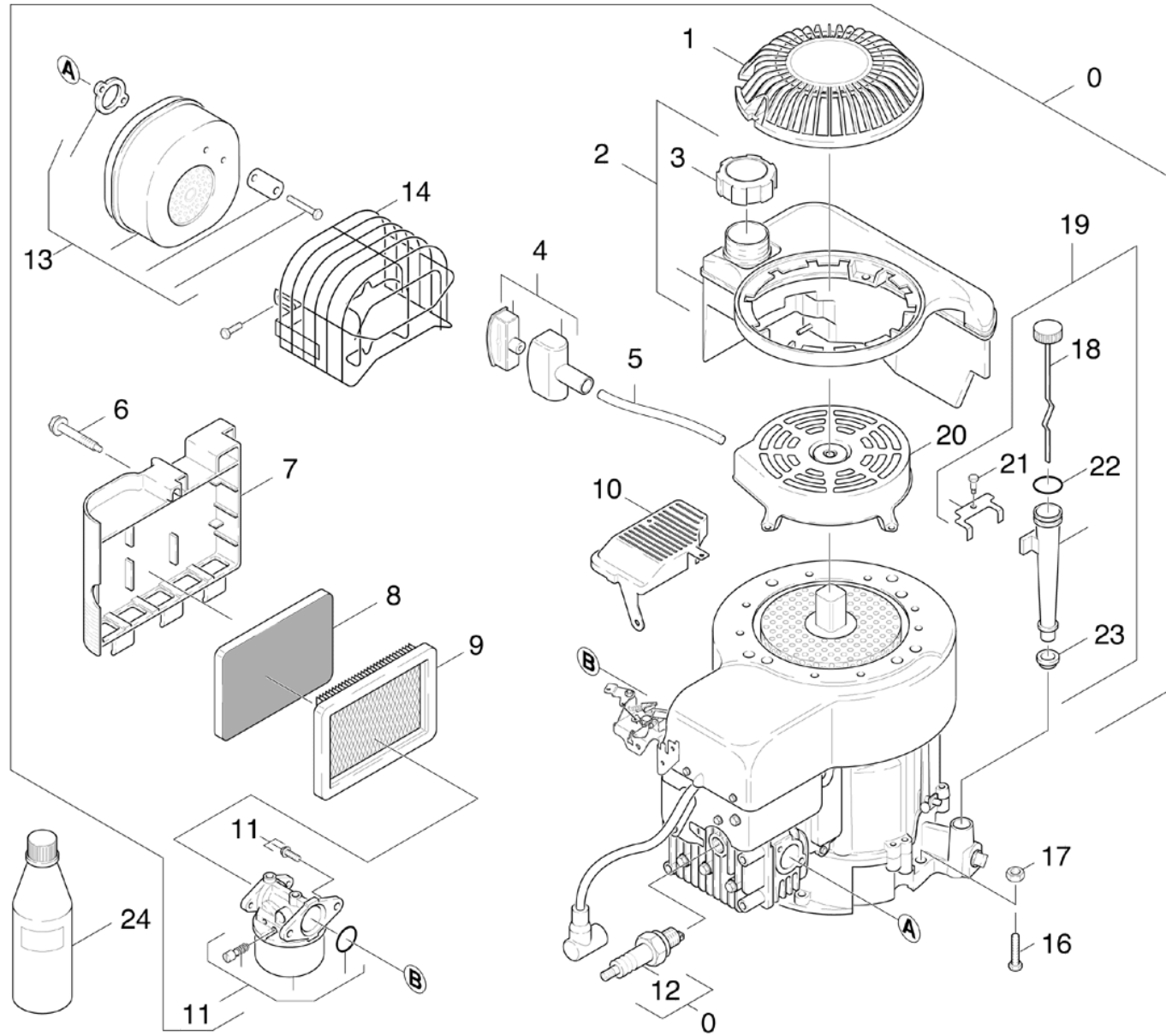
## 23 Valves

---

ET/VT (spare/wear parts)	Pos	Material #	Name	Qty.	Unit	from ser.nr.	up to ser.nr.
	27	4.580-339.0	Therموالفة	1.000	ST	0000000000	0000000000

**30 Motor**

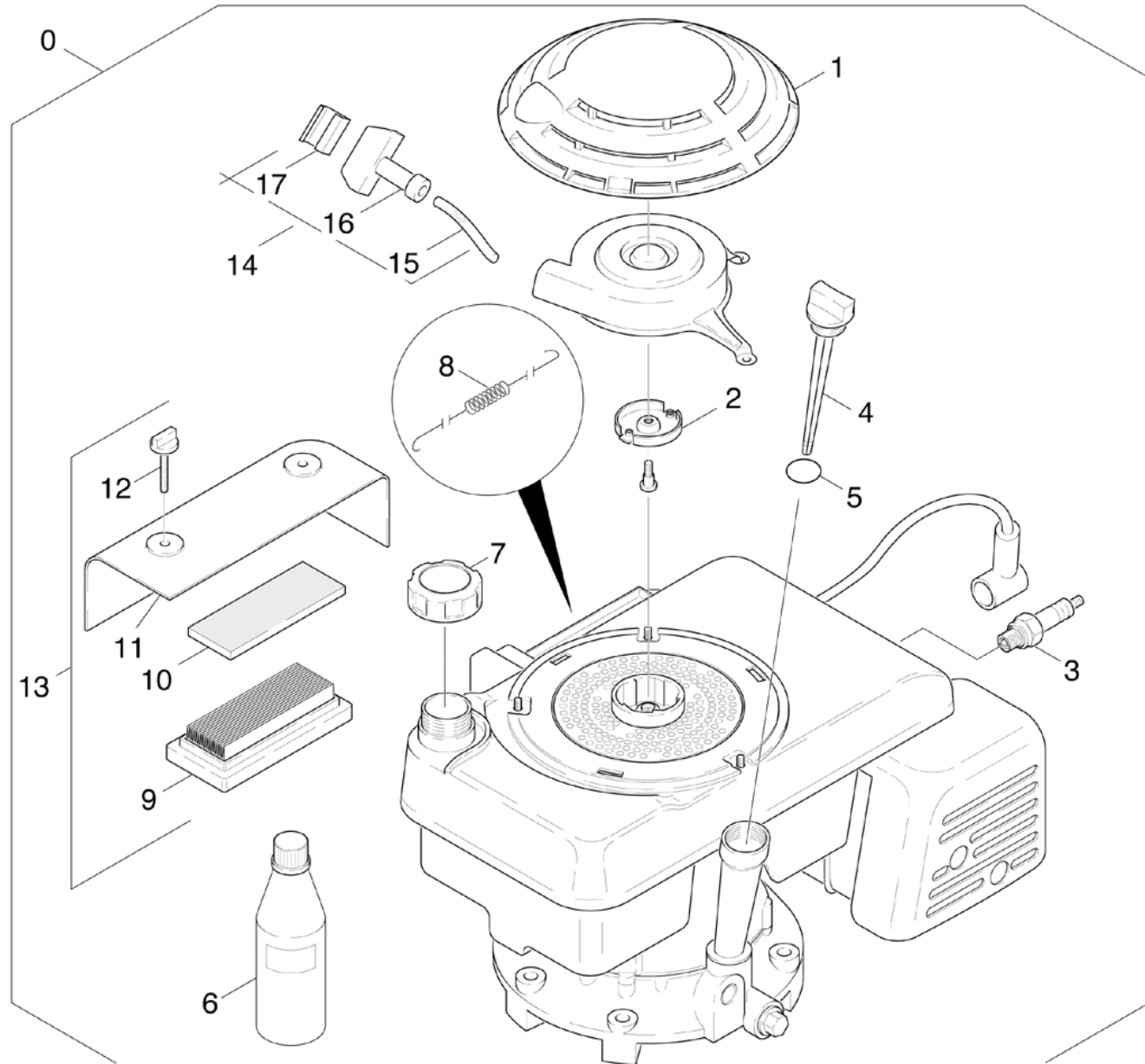
Pos	Name	Qty.	Unit	from ser.nr.	up to ser.nr.	var. information
31	Motor	1.000	ST	0000000000	0000000000	VERSION 1
Position text: / 1.077-102.0 / -112.0						
32	Motor	1.000	ST	0000000000	0000000000	VERSION 2
Position text: / 1.077-122.0 / -132.0						
33	Transmission	1.000	ST	0000000000	0000000000	
35	Generator	1.000	ST	0000000000	0000000000	



31 Motor

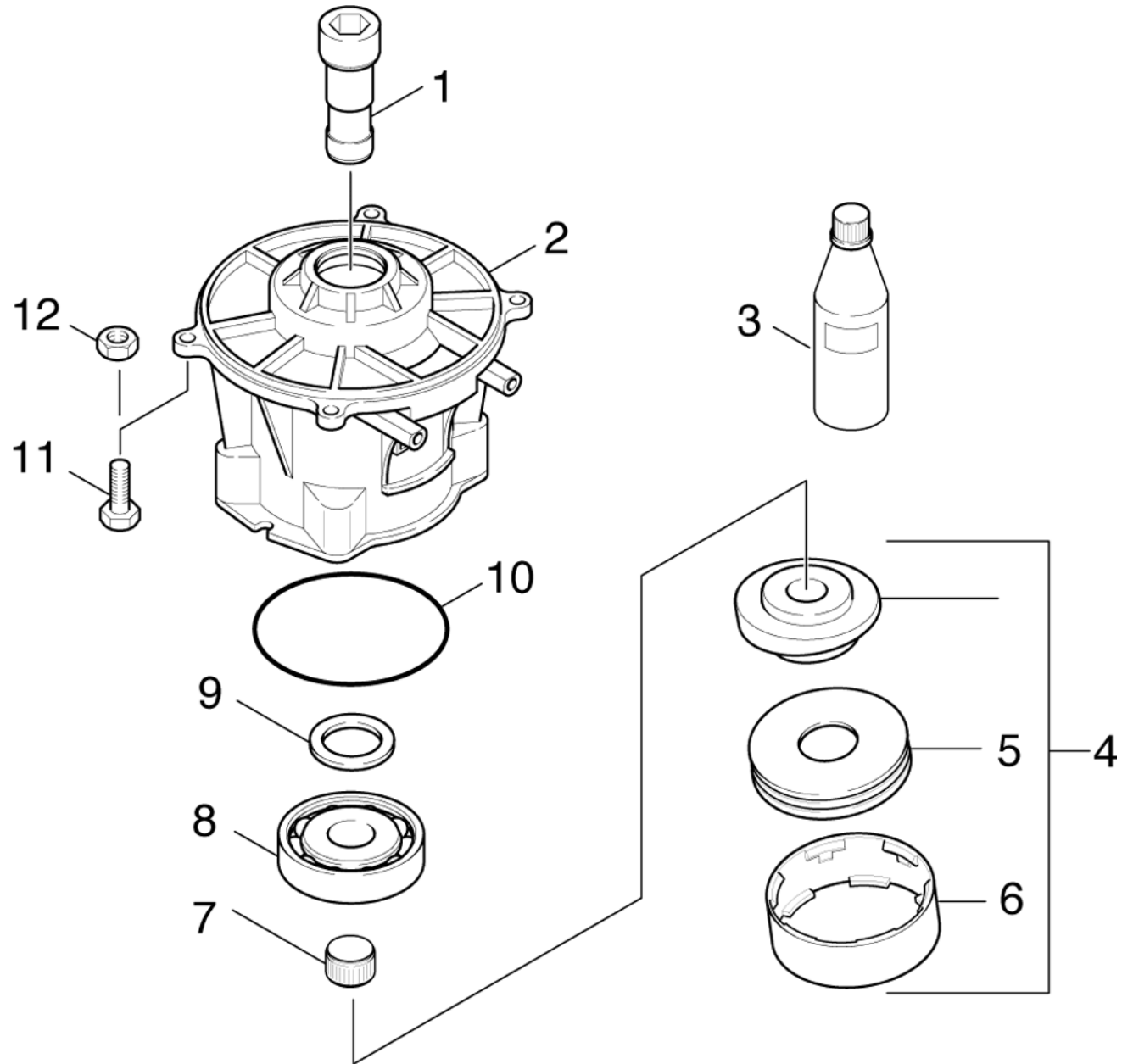
Pos	Material #	Name	Qty.	Unit	from ser.nr.	up to ser.nr.
0	6.491-395.0	Gasoline engine 6 HP	1.000	ST	0000000000	0000000000
1	6.491-431.0	Shockproff protection	1.000	ST	0000000000	0000000000
2		Stockpiling discontinued	1.000	ST	0000000000	0000000000
3	6.491-331.0	Cap of a tank	1.000	ST	0000000000	0000000000
4	6.491-411.0	Handhold -ANWERF	1.000	ST	0000000000	0000000000
5	6.491-334.0	Starter rope	1.000	ST	0000000000	0000000000
6		Stockpiling discontinued	1.000	ST	0000000000	0000000000
7		Stockpiling discontinued	1.000	ST	0000000000	0000000000
8	6.491-428.0	Prefilter	1.000	ST	0000000000	0000000000
9	6.491-338.0	Air filter	1.000	ST	0000000000	0000000000
10	6.491-432.0	Cover	1.000	ST	0000000000	0000000000
11		Stockpiling discontinued	1.000	ST	0000000000	0000000000
12	6.951-192.0	Ignition plug	1.000	ST	0000000000	0000000000
13		Stockpiling discontinued	1.000	ST	0000000000	0000000000
14		Stockpiling discontinued	1.000	ST	0000000000	0000000000
16		Stockpiling discontinued	3.000	ST	0000000000	0000000000
17		Stockpiling discontinued	3.000	ST	0000000000	0000000000
20		Stockpiling discontinued	1.000	ST	0000000000	0000000000
21	6.491-437.0	Hexagonal head screw	1.000	ST	0000000000	0000000000
22	6.491-435.0	O-Ring seal	1.000	ST	0000000000	0000000000
23		Stockpiling discontinued	1.000	ST	0000000000	0000000000
24	6.288-086.0	Engine oil SAE30	1.000	ST	0000000000	0000000000





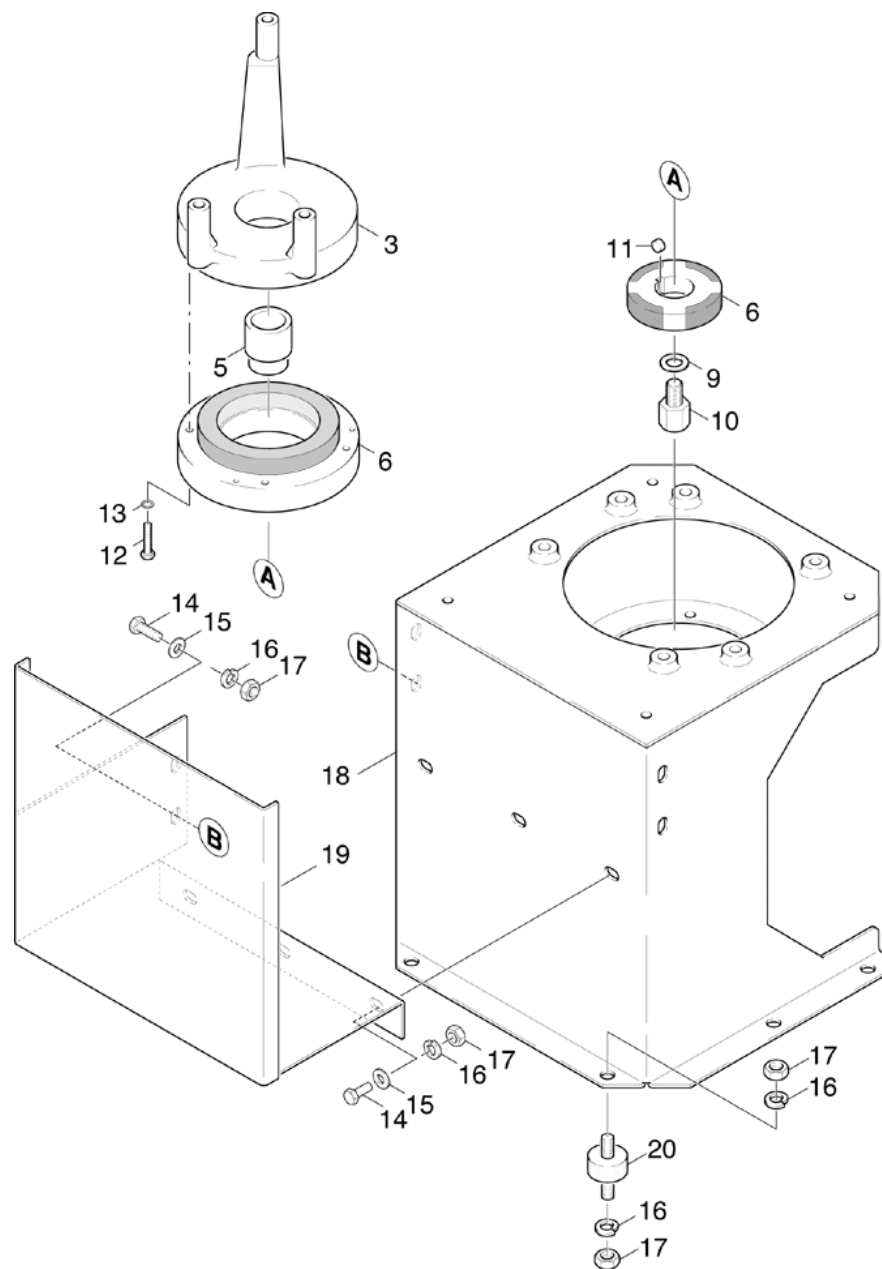
32 Motor

Pos	Material #	Name	Qty.	Unit	from ser.nr.	up to ser.nr.
0	6.491-443.0	Gasoline engine -HONDA GXV 140	1.000	ST	0000000000	0000000000
1		Stockpiling discontinued	1.000	ST	0000000000	0000000000
2		Stockpiling discontinued	1.000	ST	0000000000	0000000000
3	6.618-098.0	Ignition plug	1.000	ST	0000000000	0000000000
4		Stockpiling discontinued	1.000	ST	0000000000	0000000000
5	6.491-115.0	O-Ring seal 26,0 X 2,7	1.000	ST	0000000000	0000000000
6	6.288-086.0	Engine oil SAE30	1.000	ST	0000000000	0000000000
7	6.491-461.0	Cap of a tank	1.000	ST	0000000000	0000000000
8		Stockpiling discontinued	1.000	ST	0000000000	0000000000
9	6.491-462.0	Air filter	1.000	ST	0000000000	0000000000
10	6.491-463.0	Air filter fleece	1.000	ST	0000000000	0000000000
11		Stockpiling discontinued	1.000	ST	0000000000	0000000000
12		Stockpiling discontinued	2.000	ST	0000000000	0000000000
13		Stockpiling discontinued	1.000	ST	0000000000	0000000000
14	6.275-036.0	Set hand starter	1.000	ST	0000000000	0000000000
15	6.491-612.0	Pull cord	1.000	ST	0000000000	0000000000
16	6.491-466.0	Handhold for pull cord	1.000	ST	0000000000	0000000000
17	6.491-468.0	Handhold reinforcement	1.000	ST	0000000000	0000000000



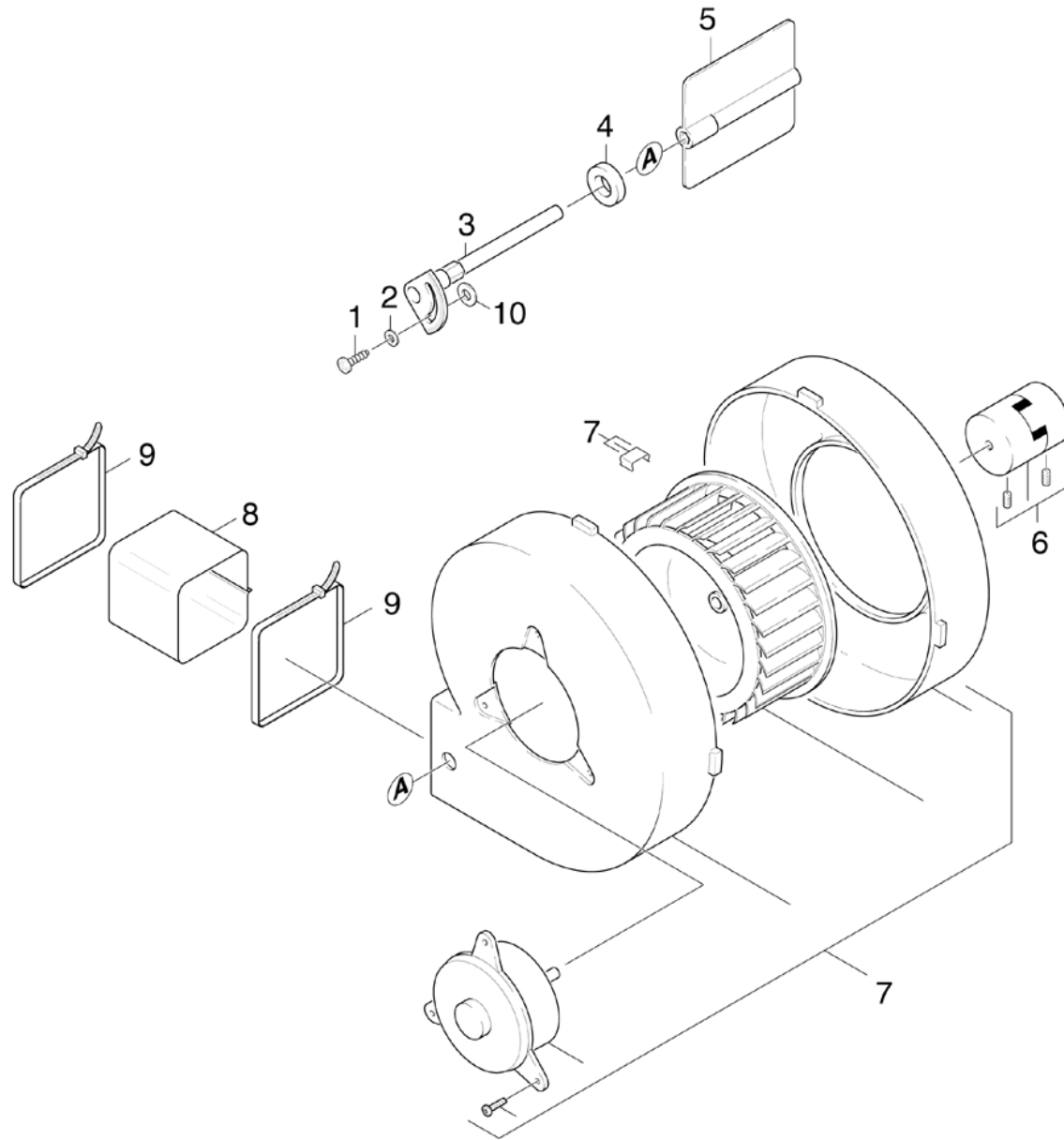
### 33 Transmission

ET/VT (spare/wear parts)	Pos	Material #	Name	Qty.	Unit	from ser.nr.	up to ser.nr.
	1	5.471-076.0	Coupling element	1.000	ST	0000000000	0000000000
	2	5.063-418.0	Cover A	1.000	ST	0000000000	0000000000
X	3	6.288-050.0	Engine oil 1L	1.000	ST	0000000000	0000000000
	4	4.120-154.0	Wobble plate	1.000	ST	0000000000	0000000000
	5	6.401-141.0	Deep groove ball thrust bearing	1.000	ST	0000000000	0000000000
	6	5.015-044.0	Ring	1.000	ST	0000000000	0000000000
	7	6.343-016.0	Tolerance ring 20X14	1.000	ST	0000000000	0000000000
	8	6.401-142.0	Ball bearing 7305 B	1.000	ST	0000000000	0000000000
	9	7.367-018.0	Radial shaft seal ring A26x37x7 -NBR DI	1.000	ST	0000000000	0000000000
X	10	6.362-097.0	O-Ring seal 85,0 X 3,0-NBR 70	1.000	ST	0000000000	0000000000
	11	7.306-092.0	Screw M6x20-ST- 8.8-R3R (IN6RD)	4.000	ST	0000000000	0000000000
X-X	12	7.311-425.0	Hexagon nut M6 -04-A2E ISO 10511	4.000	ST	0000000000	0000000000



35 Generator

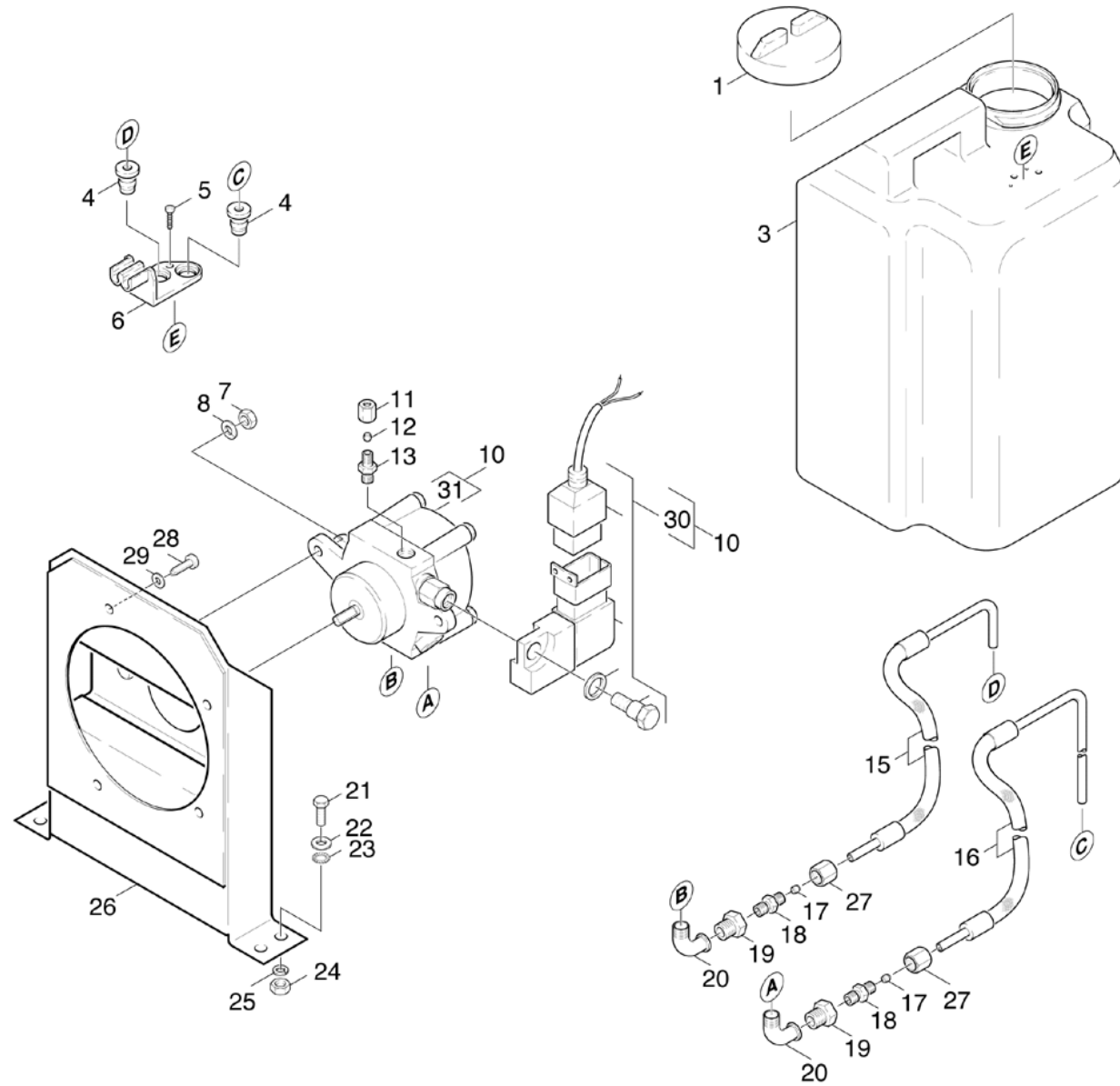
Pos	Material #	Name	Qty.	Unit	from ser.nr.	up to ser.nr.
2		Stockpiling discontinued	3.000	ST	0000000000	0000000000
Position text: / 1.077-102.0 / -112.0						
3	9.134-001.0	Housing	1.000	ST	0000000000	0000000000
3	9.134-002.0	Housing	1.000	ST	0000000000	0000000000
Position text: / 1.077-102.0 / -112.0						
5	9.178-003.0	Coupler motor	1.000	ST	0000000000	0000000000
6	6.611-715.0	PACKET (STATOR)	1.000	ST	0000000000	0000000000
9	7.312-903.0	Washer .375X1.25"	1.000	ST	0000000000	0000000000
10	6.303-244.0	Threaded bolt	1.000	ST	0000000000	0000000000
11	6.612-533.0	WEDGE KEY	1.000	ST	0000000000	0000000000
12		Stockpiling discontinued	4.000	ST	0000000000	0000000000
13		Stockpiling discontinued	4.000	ST	0000000000	0000000000
14	6.965-019.0	Screw	5.000	ST	0000000000	0000000000
15		Stockpiling discontinued	5.000	ST	0000000000	0000000000
16	6.965-012.0	Lock washer 1/4"-vz	17.000	ST	0000000000	0000000000
17	6.310-100.0	Nut	17.000	ST	0000000000	0000000000
18		Stockpiling discontinued	1.000	ST	0000000000	0000000000
19	5.042-926.0	Holder	1.000	ST	0000000000	0000000000
20	6.339-142.0	Rubber buffer	6.000	ST	0000000000	0000000000
22	9.178-002.0	Moulded part	1.000	ST	0000000000	0000000000
Position text: / 1.077-102.0 / -112.0						
23		Stockpiling discontinued	4.000	ST	0000000000	0000000000
Position text: / 1.077-102.0 / -112.0						
24	7.312-001.0	Washer 4 -200HV-A3E ISO 7089	4.000	ST	0000000000	0000000000
Position text: / 1.077-102.0 / -112.0						



40 Blower

ET/VT (spare/wear parts)	Pos	Material #	Name	Qty.	Unit	from ser.nr.	up to ser.nr.
X-X	1	7.303-077.0	Sheet metal screw ST4,8X16-ST-A2R (IN6R	1.000	ST	0000000000	0000000000
X	2	7.312-278.0	Washer 5-200HV-A2E ISO7093-1	1.000	ST	0000000000	0000000000
	3	5.603-016.0	Shaft	1.000	ST	0000000000	0000000000
	4		Stockpiling discontinued	1.000	ST	0000000000	0000000000
	5		Stockpiling discontinued	1.000	ST	0000000000	0000000000
	6	5.471-081.0	Coupler	1.000	ST	0000000000	0000000000
	7	6.484-267.0	Blower	1.000	ST	0000000000	0000000000
	8	5.178-025.0	Cloth collar	1.000	ST	0000000000	0000000000
X	9	6.388-604.0	Tightening strap	2.000	ST	0000000000	0000000000
	10		Stockpiling discontinued	1.000	ST	0000000000	0000000000





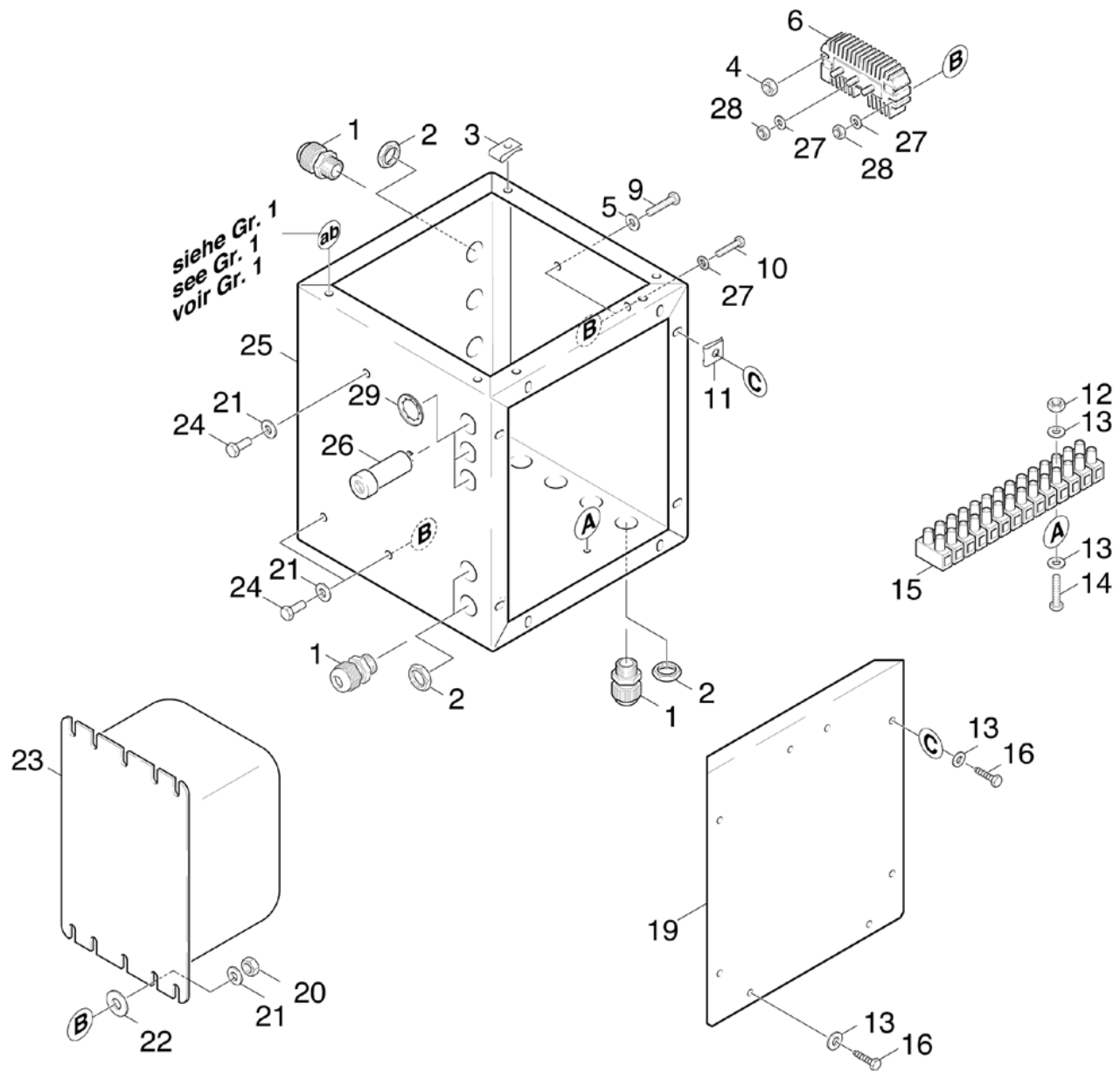
50 Fuel system

ET/VT (spare/wear parts)	Pos	Material #	Name	Qty.	Unit	from ser.nr.	up to ser.nr.
X-X	1	5.063-217.0	Cover	1.000	ST	0000000000	0000000000
	3		Stockpiling discontinued	1.000	ST	0000000000	0000000000
	4	5.365-145.0	Profile gasket	2.000	ST	0000000000	0000000000
	5	7.303-033.0	Screw M4x16-ST-A2R (KOMBI-IN6RD)	2.000	ST	0000000000	0000000000
	6	5.042-432.0	Holder	1.000	ST	0000000000	0000000000
	7		Stockpiling discontinued	2.000	ST	0000000000	0000000000
	8	6.312-066.0	Washer	2.000	ST	0000000000	0000000000
	10		Stockpiling discontinued	1.000	ST	0000000000	0000000000
X-X	11	6.389-262.0	Union nut A 4-LL	1.000	ST	0000000000	0000000000
X-X	12	6.389-263.0	Cutting ring d.4	1.000	ST	0000000000	0000000000
X	13	6.389-261.0	Screw union	1.000	ST	0000000000	0000000000
	15	6.389-379.0	Hose assembly	1.000	ST	0000000000	0000000000
	16	6.389-378.0	Hose assembly	1.000	ST	0000000000	0000000000
X-X	17	6.386-160.0	Cutting ring D 6-L/S	2.000	ST	0000000000	0000000000
X	18	6.386-181.0	Connection piece 6-L1/8NPT	2.000	ST	0000000000	0000000000
	19		Stockpiling discontinued	2.000	ST	0000000000	0000000000
	20	7.387-907.0	Elbow 1/4"	2.000	ST	0000000000	0000000000
	21	6.965-019.0	Screw	4.000	ST	0000000000	0000000000
	22		Stockpiling discontinued	4.000	ST	0000000000	0000000000
	23	6.312-056.0	Washer	4.000	ST	0000000000	0000000000
	24	6.310-100.0	Nut	4.000	ST	0000000000	0000000000
	25	6.965-012.0	Lock washer 1/4"-vz	1.000	ST	0000000000	0000000000
	26	4.038-471.0	Sheet metal component	1.000	ST	0000000000	0000000000
X-X	27	6.386-346.0	Union nut A 6-L	2.000	ST	0000000000	0000000000
	28	6.303-256.0	Screw 10-32X.75	5.000	ST	0000000000	0000000000

**50 Fuel system**

---

ET/VT (spare/wear parts)	Pos	Material #	Name	Qty.	Unit	from ser.nr.	up to ser.nr.
	29	6.312-057.0	Washer 10-32	5.000	ST	0000000000	0000000000
	30	9.185-004.0	Solenoid valve	1.000	ST	0000000000	0000000000
	31	6.472-421.0	Pump	1.000	ST	0000000000	0000000000



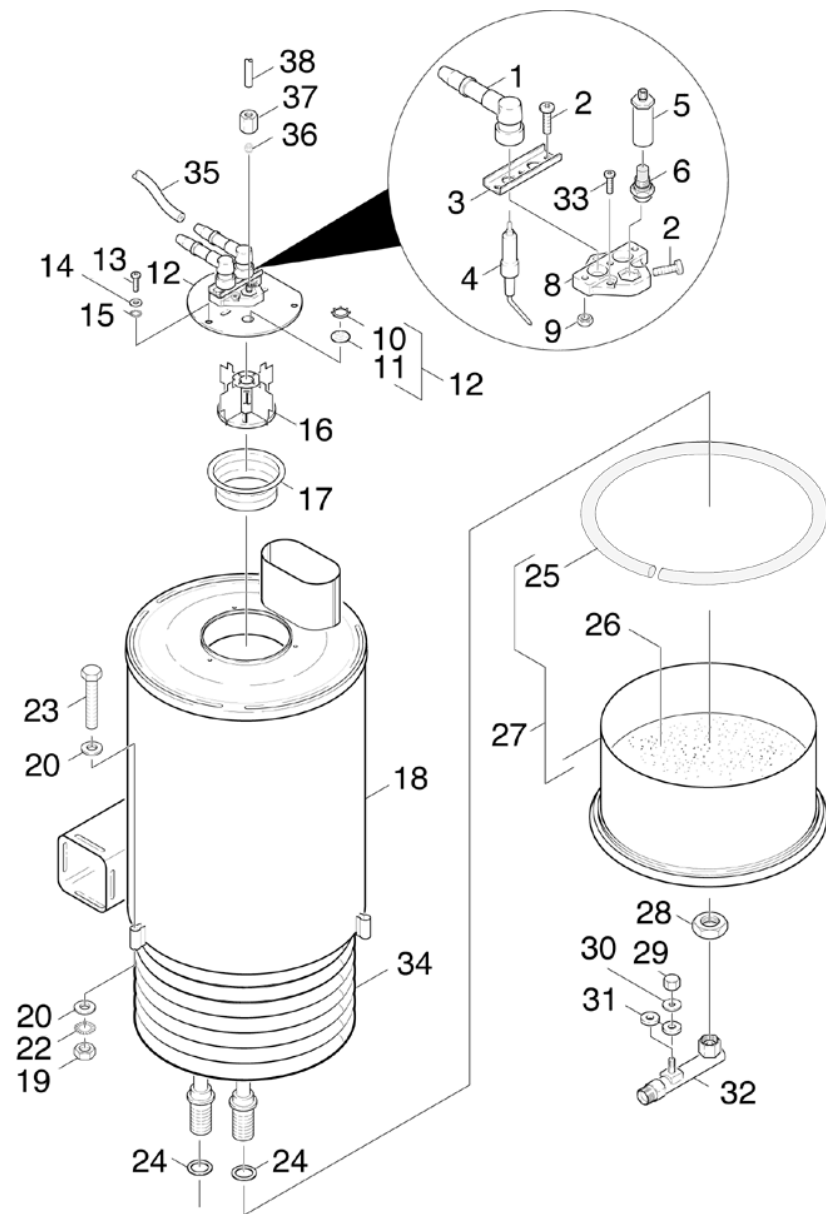
60 Electric control box

ET/VT (spare/wear parts)	Pos	Material #	Name	Qty.	Unit	from ser.nr.	up to ser.nr.
	1	6.641-355.0	Cable gland PG9	9.000	ST	0000000000	0000000000
	2	6.641-366.0	Locknut PG 9	9.000	ST	0000000000	0000000000
	3		Stockpiling discontinued	4.000	ST	0000000000	0000000000
	4	6.310-100.0	Nut	1.000	ST	0000000000	0000000000
	5		Stockpiling discontinued	1.000	ST	0000000000	0000000000
	6	5.031-222.0	Rectifier	1.000	ST	0000000000	0000000000
	9		Stockpiling discontinued	1.000	ST	0000000000	0000000000
	10		Stockpiling discontinued	1.000	ST	0000000000	0000000000
	11		Stockpiling discontinued	8.000	ST	0000000000	0000000000
	12		Stockpiling discontinued	2.000	ST	0000000000	0000000000
	13		Stockpiling discontinued	11.000	ST	0000000000	0000000000
	14		Stockpiling discontinued	2.000	ST	0000000000	0000000000
	15	6.643-249.0	Strip terminal	1.000	ZST	0000000000	0000000000
	16	6.303-251.0	Screw 6-32X1/2"	9.000	ST	0000000000	0000000000
	19		Stockpiling discontinued	1.000	ST	0000000000	0000000000
X-X	20	7.311-425.0	Hexagon nut M6 -04-A2E ISO 10511	3.000	ST	0000000000	0000000000
	21	7.312-276.0	Washer 6 -200HV-A2E ISO7093-1	6.000	ST	0000000000	0000000000
	22	7.312-159.0	Toothed lock washer A8,4-FST-PH DIN 679	1.000	ST	0000000000	0000000000
	23	6.622-201.0	Ignition transformer	1.000	ST	0000000000	0000000000
	24	7.306-090.0	Screw M6x16 -8.8-R3R (In6Rd)	3.000	ST	0000000000	0000000000
	26	9.185-001.0	SAFETY FUSE	3.000	ST	0000000000	0000000000
	27		Stockpiling discontinued	5.000	ST	0000000000	0000000000
	28	6.311-011.0	Hexagon nut 8-32	4.000	ST	0000000000	0000000000
	29	9.182-001.0	Lock washer	3.000	ST	0000000000	0000000000

**70 Flow heater**

---

Pos	Name	Qty.	Unit	from ser.nr.	up to ser.nr.	var. information
71	Flow heater	1.000	ST	0000000000	0000000000	VERSION 1
72	Burner cover	1.000	ST	0000000000	0000000000	VERSION 2
73	Heating coil	1.000	ST	0000000000	0000000000	VERSION 2
74	Burner bottom	1.000	ST	0000000000	0000000000	VERSION 2



71 Flow heater

ET/VT (spare/wear parts)	Pos	Material #	Name	Qty.	Unit	from ser.nr.	up to ser.nr.	Footnote text
X-X	1	6.618-076.0	Spark plug connector	2.000	ST	0000000000	0000000000	
	2	7.309-019.0	Hexagonal head screw M 5x14-8.8-A2E TORX	4.000	ST	0000000000	0000000000	
	3	5.004-541.0	Strap	1.000	ST	0000000000	0000000000	
	4	5.826-047.0	Ignition electrode	2.000	ST	0000000000	0000000000	
X	5	5.667-042.0	Nozzle holder	1.000	ST	0000000000	0000000000	
X-X	6	6.415-520.0	Nozzle	1.000	ST	0000000000	0000000000	
	8	5.668-001.0	Spark holder	1.000	ST	0000000000	0000000000	
X-X	9	7.311-037.0	Hexagon nut M 5-CU2 ISO 4032	3.000	ST	0000000000	0000000000	
	10	6.343-165.0	Serrated ring	1.000	ST	0000000000	0000000000	
	11	6.278-018.0	Glass pane	1.000	ST	0000000000	0000000000	
	12	4.654-133.0	Cover D.K.	1.000	ST	0000000000	0000000000	
	13	7.303-078.0	Sheet metal screw ST4,8X19-ST-A2R (KOMBI	3.000	ST	0000000000	0000000000	
	14	7.312-002.0	Washer 5-200HV-A3E ISO 7090	3.000	ST	0000000000	0000000000	
	15	7.312-172.0	Toothed lock washer A5,3-FSt-A3E DIN 67	3.000	ST	0000000000	0000000000	
	16	4.663-088.0	Burner cage	1.000	ST	0000000000	0000000000	
	17	5.664-182.0	Burner part	1.000	ST	0000000000	0000000000	
	18		Stockpiling discontinued	1.000	ST	0000000000	0000000000	
	19		Stockpiling discontinued	3.000	ST	0000000000	0000000000	
	20		Stockpiling discontinued	3.000	ST	0000000000	0000000000	
	21	5.378-100.0	Spacer	2.000	ST	0000000000	0000000000	
	21	6.965-015.0	Washer 1/4"-vz	3.000	ST	0000000000	0000000000	
	23		Stockpiling discontinued	3.000	ST	0000000000	0000000000	
X-X	24	5.365-068.0	Profile gasket	2.000	ST	0000000000	0000000000	
X-X	25	6.366-009.0	Seal string	1.000	ST	0000000000	0000000000	
	26	2.889-061.0	Refractory material 8kg	1.000	ST	0000000000	0000000000	

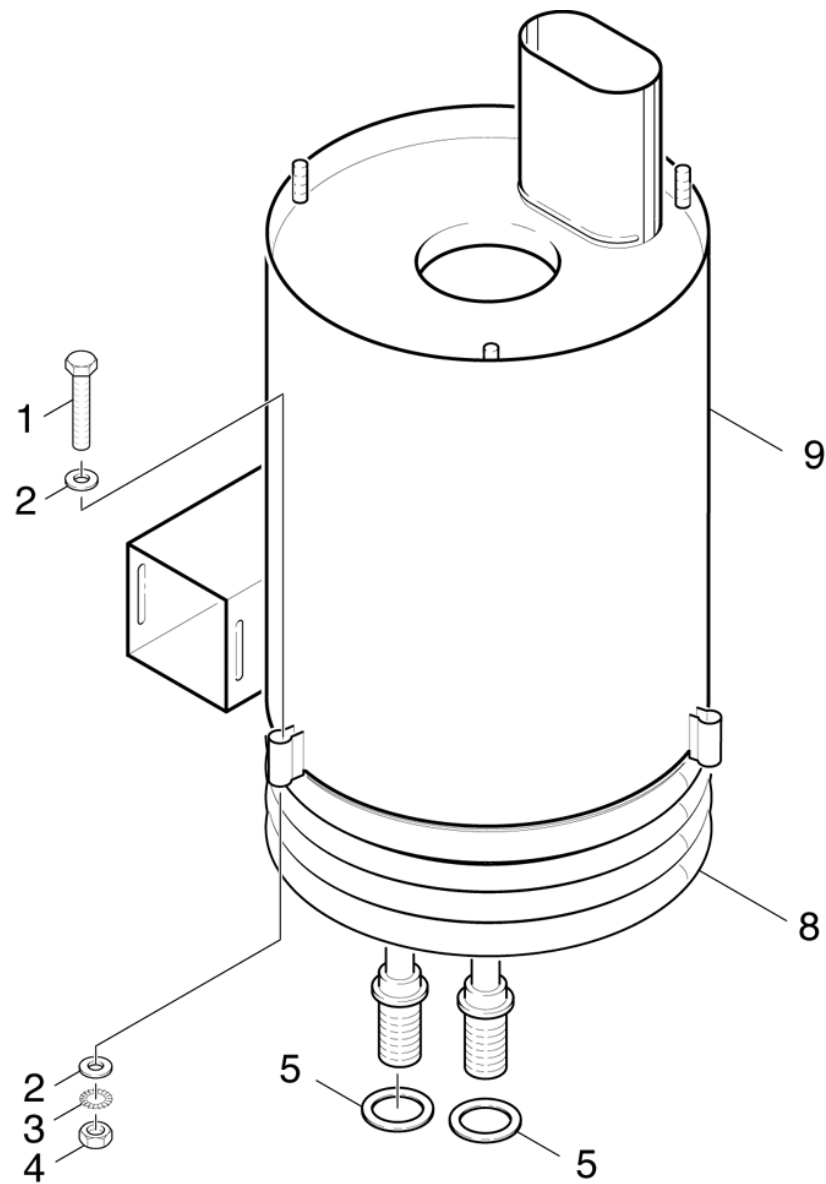


71 Flow heater

ET/VT (spare/wear parts)	Pos	Material #	Name	Qty.	Unit	from ser.nr.	up to ser.nr.	Footnote text
X-X	27	4.655-044.0	Bottom pressure boiler	1.000	ST	0000000000	0000000000	
X	28	7.311-155.0	Hexagon nut M22x1,5 -Cu2 DIN 936	2.000	ST	0000000000	0000000000	
X-X	29	7.311-427.0	Hexagon nut M8 -04-A2E ISO 10511	1.000	ST	0000000000	0000000000	
	30	7.312-277.0	Washer 8-200HV-A2E ISO7093-1	1.000	ST	0000000000	0000000000	
	32	4.427-123.0	Manifold	1.000	ST	0000000000	0000000000	
	33	7.303-039.0	Screw M5x16 -St-A2R (In6Rd)	3.000	ST	0000000000	0000000000	
	34	4.680-127.0	Heating coil	1.000	ST	0000000000	0000000000	
	35	6.641-198.0	Ignition cable	1.000	M	0000000000	0000000000	TO ORDER AS CUT GOODS
X-X	36	6.389-263.0	Cutting ring d.4	1.000	ST	0000000000	0000000000	
X-X	37	6.389-262.0	Union nut A 4-LL	1.000	ST	0000000000	0000000000	
	38	5.423-231.0	Conduit	1.000	ST	0000000000	0000000000	

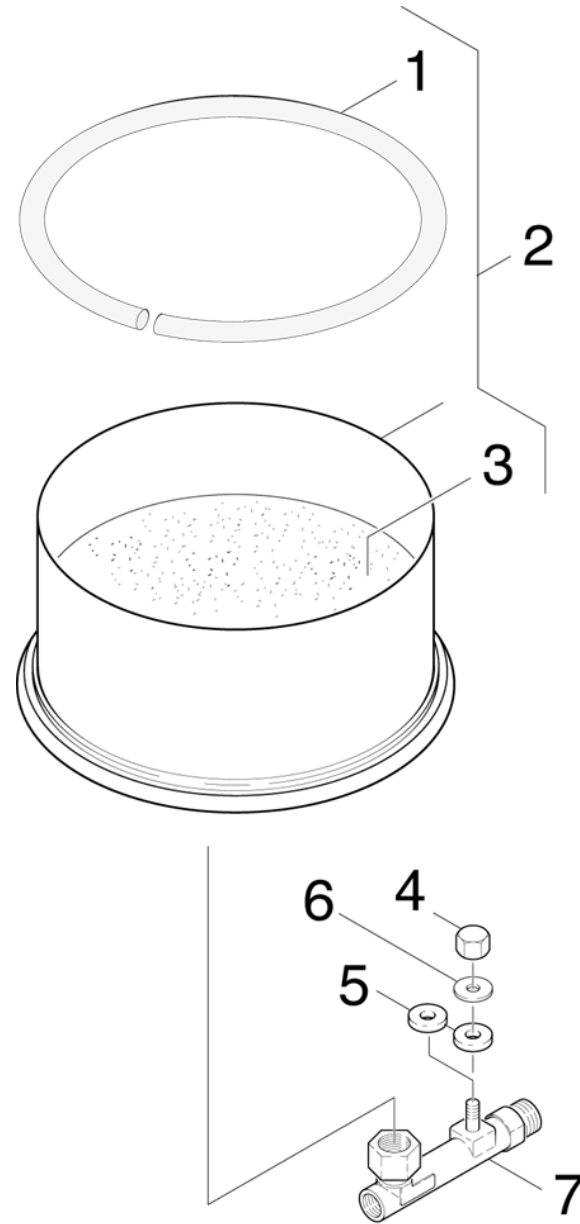
**72 Burner cover**

ET/VT (spare/wear parts)	Pos	Material #	Name	Qty.	Unit	from ser.nr.	up to ser.nr.
X-X	1	6.618-076.0	Spark plug connector	2.000	ST	0000000000	0000000000
	2	7.309-019.0	Hexagonal head screw M 5x14-8.8-A2E TORX	3.000	ST	0000000000	0000000000
	3	5.004-228.0	Strap	1.000	ST	0000000000	0000000000
X-X	4	2.883-083.0	Spare part set	2.000	ST	0000000000	0000000000
X	5	7.306-443.0	Cylinder head screw M5x12-4.8-A2E ISO 1	6.000	ST	0000000000	0000000000
	6	5.668-001.0	Spark holder	1.000	ST	0000000000	0000000000
	7	5.423-231.0	Conduit	1.000	ST	0000000000	0000000000
X-X	8	6.389-262.0	Union nut A 4-LL	1.000	ST	0000000000	0000000000
X-X	9	6.389-263.0	Cutting ring d.4	1.000	ST	0000000000	0000000000
X	10	5.667-042.0	Nozzle holder	1.000	ST	0000000000	0000000000
	11	9.179-001.0	Nozzle	1.000	ST	0000000000	0000000000
X	12	7.306-443.0	Cylinder head screw M5x12-4.8-A2E ISO 1	1.000	ST	0000000000	0000000000
X-X	13	7.311-037.0	Hexagon nut M 5-CU2 ISO 4032	3.000	ST	0000000000	0000000000
	14	7.311-380.0	Cap nut M6 -6-A2E DIN 1587	3.000	ST	0000000000	0000000000
	15	7.312-167.0	Toothed lock washer A6,4-FSt-A3E DIN 67	3.000	ST	0000000000	0000000000
	16	4.654-091.0	Cover D.K.	1.000	ST	0000000000	0000000000
	17	7.303-136.0	Sheet metal screw ST3,5X 6,5-ST-R2R (IN	1.000	ST	0000000000	0000000000
	18	5.000-590.0	Plate	1.000	ST	0000000000	0000000000
	19	5.364-100.0	Flat gasket	1.000	ST	0000000000	0000000000
	20	6.278-014.0	Glass pane	1.000	ST	0000000000	0000000000
	21		Stockpiling discontinued	3.000	ST	0000000000	0000000000
	22	7.311-002.0	Hexagon nut M5 -8-A2E ISO 4032	3.000	ST	0000000000	0000000000
	23	4.663-060.0	Burner cage	1.000	ST	0000000000	0000000000
	24	6.641-198.0	Ignition cable	2.000	M	0000000000	0000000000



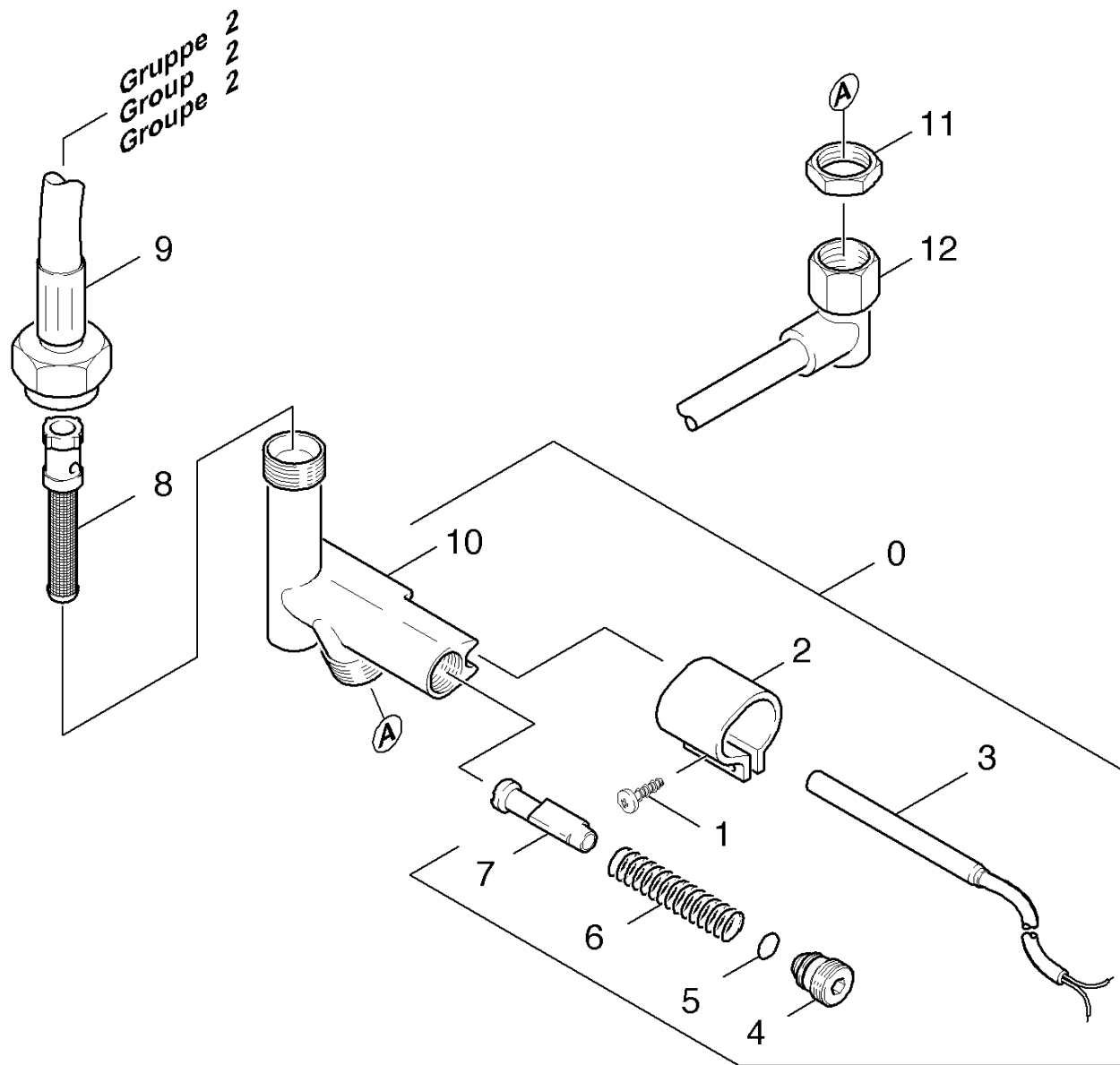
73 Heating coil

ET/VT (spare/wear parts)	Pos	Material #	Name	Qty.	Unit	from ser.nr.	up to ser.nr.
	1		Stockpiling discontinued	3.000	ST	0000000000	0000000000
	2		Stockpiling discontinued	6.000	ST	0000000000	0000000000
	3	6.965-015.0	Washer 1/4"-vz	3.000	ST	0000000000	0000000000
	4	6.310-059.0	Cage nut M 5	3.000	ST	0000000000	0000000000
X-X	5	5.365-068.0	Profile gasket	2.000	ST	0000000000	0000000000
X	6	7.311-155.0	Hexagon nut M22x1,5 -Cu2 DIN 936	2.000	ST	0000000000	0000000000
	8	4.680-127.0	Heating coil	1.000	ST	0000000000	0000000000
	9	4.652-072.0	Outer covering	1.000	ST	0000000000	0000000000



**74 Burner bottom**

ET/VT (spare/wear parts)	Pos	Material #	Name	Qty.	Unit	from ser.nr.	up to ser.nr.
X-X	1	6.366-009.0	Seal string	1.000	ST	0000000000	0000000000
X-X	2	4.655-044.0	Bottom pressure boiler	1.000	ST	0000000000	0000000000
	3	2.889-061.0	Refractory material 8kg	1.000	ST	0000000000	0000000000
X-X	4	7.311-427.0	Hexagon nut M8 -04-A2E ISO 10511	1.000	ST	0000000000	0000000000
	5	5.378-100.0	Spacer	2.000	ST	0000000000	0000000000
	6	7.312-277.0	Washer 8-200HV-A2E ISO7093-1	1.000	ST	0000000000	0000000000
	7	4.427-123.0	Manifold	1.000	ST	0000000000	0000000000



## 80 Safety system

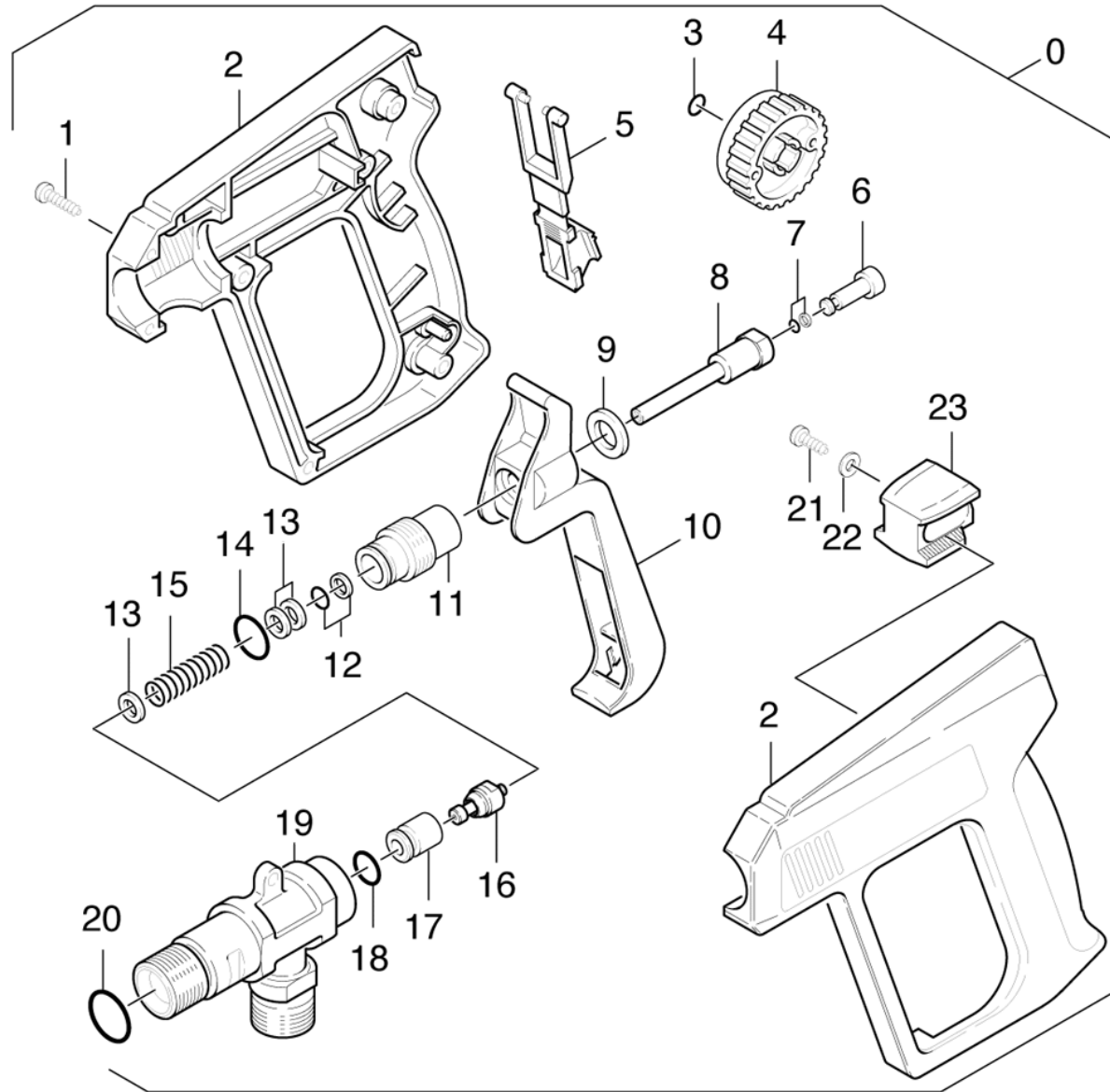
ET/VT (spare/wear parts)	Pos	Material #	Name	Qty.	Unit	from ser.nr.	up to ser.nr.
	0	4.749-122.0	Safety system	1.000	ST	0000000000	0000000000
	1	6.303-122.0	M4 .2X13 DIN 7981 TORX T15 PAN HD HI/LO	1.000	ST	0000000000	0000000000
	2	5.041-076.0	Clamp	1.000	ST	0000000000	0000000000
X-X	3	2.883-384.0	Reed switch replacement	1.000	ST	0000000000	0000000000
X	4	5.305-162.0	Shaped screw	1.000	ST	0000000000	0000000000
X	5	6.362-482.0	O-Ring seal 10 x 1,5-NBR 70	1.000	ST	0000000000	0000000000
X-X	6	5.332-057.0	Helical spring	1.000	ST	0000000000	0000000000
X-X	7	4.553-022.0	Piston	1.000	ST	0000000000	0000000000
X-X	8	6.414-418.0	Strainer	1.000	ST	0000000000	0000000000
	9	6.389-537.0	High pressure hose DN 8	1.000	ST	0000000000	0000000000
	10	5.060-479.0	Housing	1.000	ST	0000000000	0000000000
X	11	7.311-155.0	Hexagon nut M22x1,5 -Cu2 DIN 936	1.000	ST	0000000000	0000000000
	12	4.421-066.0	Pipelines	1.000	ST	0000000000	0000000000



**90 Accessories**

---

Pos	Name	Qty.	Unit	from ser.nr.	up to ser.nr.	var. information
91	Hand trigger gun	1.000	ST	0000000000	0000000000	
92	Jet pipe	1.000	ST	0000000000	0000000000	VERSION 1
93	Jet pipe	1.000	ST	0000000000	0000000000	VERSION 2
94	High pressure hose	1.000	ST	0000000000	0000000000	
95	Triple jet nozzle	1.000	ST	0000000000	0000000000	VERSION 1
96	Nozzle	1.000	ST			VERSION 2

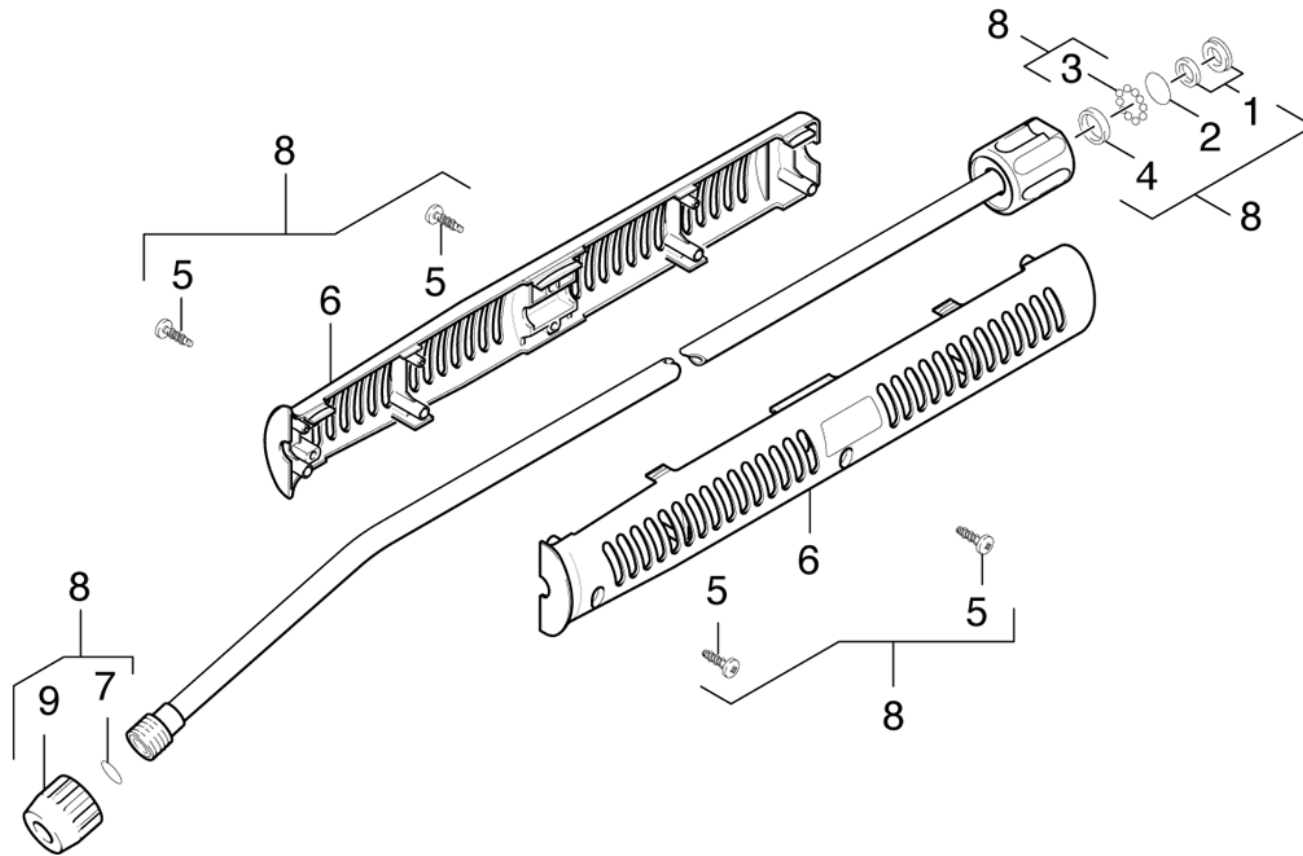


91 Hand trigger gun

ET/VT (spare/wear parts)	Pos	Material #	Name	Qty.	Unit	from ser.nr.	up to ser.nr.
X-X	0	4.775-026.0	Hand trigger gun	1.000	ST	0000000000	0000000000
	1	7.303-096.0	Screw 4x22 -ST-10.9-R2R (IN6RD)	8.000	ST	0000000000	0000000000
	2	5.321-174.0	Handhold few	1.000	ST	0000000000	0000000000
	3	6.362-176.0	O-Ring seal 6,07x1,78	1.000	ST	0000000000	0000000000
	4	5.322-006.0	Hand wheel	1.000	ST	0000000000	0000000000
	5	5.030-283.0	Moulded part	1.000	ST	0000000000	0000000000
	6	5.553-118.0	Piston	1.000	ST	0000000000	0000000000
X-X	7	6.362-477.0	O-Ring seal complete 1ST.-R.	1.000	ST	0000000000	0000000000
	8	5.107-062.0	Bar	1.000	ST	0000000000	0000000000
	9	5.115-227.0	Washer	1.000	ST	0000000000	0000000000
	10	5.481-039.0	Lever	1.000	ST	0000000000	0000000000
	11	5.305-110.0	Shaped screw	1.000	ST	0000000000	0000000000
X-X	12	6.362-468.0	O-Ring seal complete 1ST.-R.	1.000	ST	0000000000	0000000000
	13	5.115-260.0	Washer	3.000	ST	0000000000	0000000000
	14	6.362-478.0	O-Ring seal 12,42X 1,78	1.000	ST	0000000000	0000000000
	15	5.332-140.0	Helical spring	1.000	ST	0000000000	0000000000
X-X	16	4.581-049.0	Valve seat	1.000	ST	0000000000	0000000000
	17	5.110-348.0	Sleeve	1.000	ST	0000000000	0000000000
	18	6.362-479.0	O-Ring seal 7,59X 2,62	1.000	ST	0000000000	0000000000
	19	5.427-079.0	Manifold	1.000	ST	0000000000	0000000000
	20	6.362-496.0	O-Ring seal 17,12X 2,62-NBR 70	1.000	ST	0000000000	0000000000
	21	6.303-025.0	Oval head screw 4,2x16-St-vz	1.000	ST	0000000000	0000000000
	22	7.312-001.0	Washer 4 -200HV-A3E ISO 7089	1.000	ST	0000000000	0000000000
	23	5.030-459.0	Moulded part	1.000	ST	0000000000	0000000000
	100	2.883-014.0	HDS 1290 GUN KIT	1.000	ST	0000000000	0000000000

100 HDS 1290 GUN KIT (2.883-014.0)

ET/VT (spare/wear parts)	Pos	Material #	Name	Qty.	Unit	from ser.nr.	up to ser.nr.
X-X	10	4.581-049.0	Valve seat	1.000	ST	0000000000	0000000000
	20	5.110-348.0	Sleeve	1.000	ST	0000000000	0000000000
	30	5.332-140.0	Helical spring	1.000	ST	0000000000	0000000000
	40	6.303-024.0	Oval head screw 4,2x22-ST-VERZ	8.000	ST	0000000000	0000000000
X-X	50	6.362-468.0	O-Ring seal complete 1ST.-R.	1.000	ST	0000000000	0000000000
X-X	60	6.362-477.0	O-Ring seal complete 1ST.-R.	1.000	ST	0000000000	0000000000
	70	6.362-478.0	O-Ring seal 12,42X 1,78	1.000	ST	0000000000	0000000000
	80	6.362-479.0	O-Ring seal 7,59X 2,62	1.000	ST	0000000000	0000000000
	90	6.362-496.0	O-Ring seal 17,12X 2,62-NBR 70	1.000	ST	0000000000	0000000000



92 Jet pipe

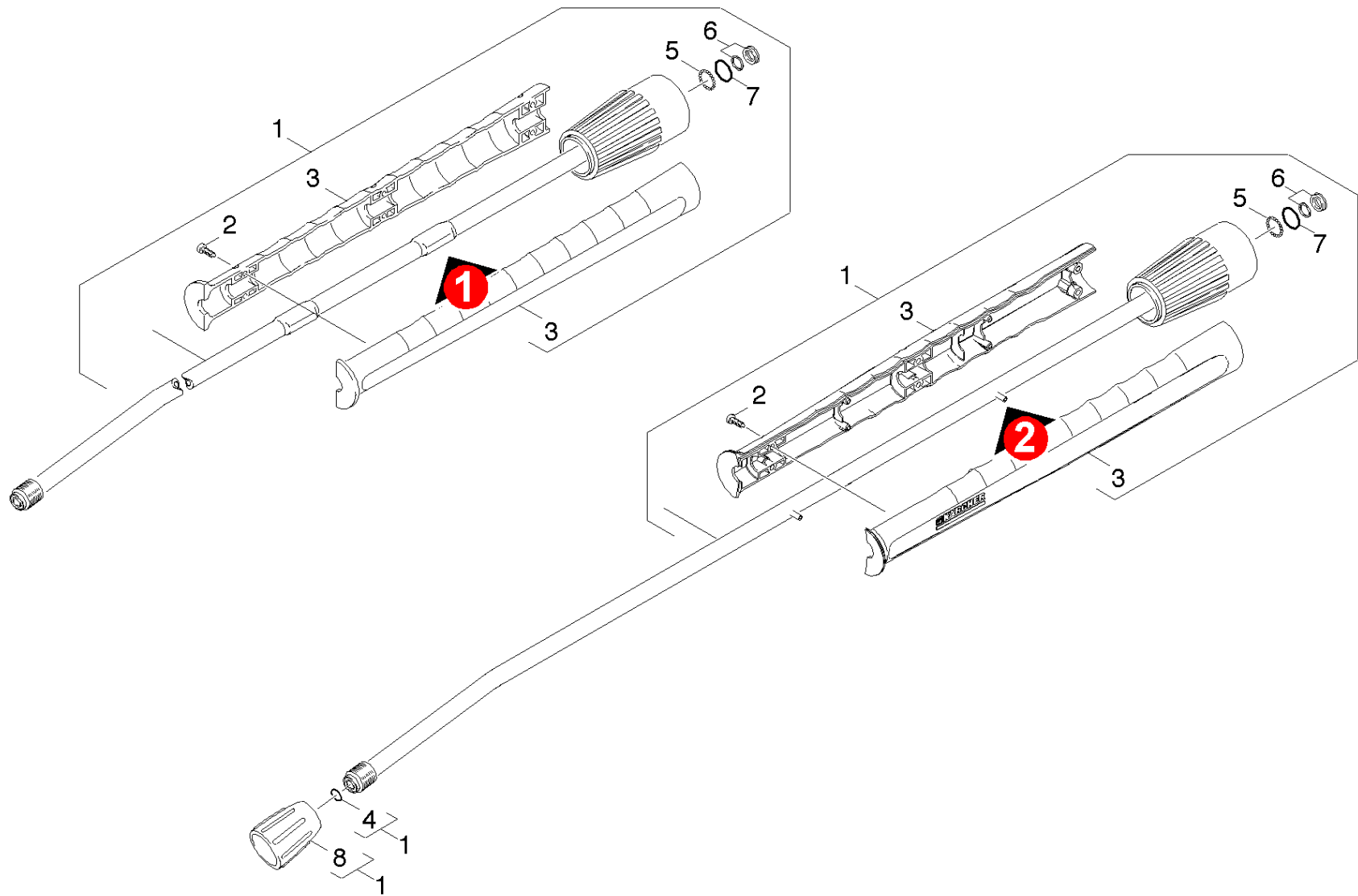
ET/VT (spare/wear parts)	Pos	Material #	Name	Qty.	Unit	from ser.nr.	up to ser.nr.
X-X	1	4.363-692.0	Grooved ring kpl. -nur fuer Ersatz-	1.000	ST	0000000000	0000000000
X-X	2	6.362-524.0	O-Ring seal 17,0 X 1,5	1.000	ST	0000000000	0000000000
X-X	3	7.401-921.0	Sphere 4 G20 -1.4034 DIN 5401	12.000	ST	0000000000	0000000000
	4	6.362-529.0	Joint ring 12x1,5	1.000	ST	0000000000	0000000000
	5	6.303-025.0	Oval head screw 4,2x16-St-vz	4.000	ST	0000000000	0000000000
	6	5.321-150.0	HANDLE (PART NO=ONE HALF)	2.000	ST	0000000000	0000000000
X-X	7	2.880-296.0	Spare part set O-Ring seal 5x	1.000	ST	0000000000	0000000000
X-X	8	4.760-660.0	Jet pipe packaged only for replacement	1.000	ST	0000000000	0000000000
X-X	9	5.401-129.0	Screw connector part	1.000	ST	0000000000	0000000000

7 Spare part set O-Ring seal 5x (2.880-296.0)

---

Pos	Material #	Name	Qty.	Unit	from ser.nr.	up to ser.nr.
10	6.362-957.0	O-Ring seal 10,0 X 2,0-EPDM 85-90	5.000	ST	0000000000	0000000000

---





93 Jet pipe

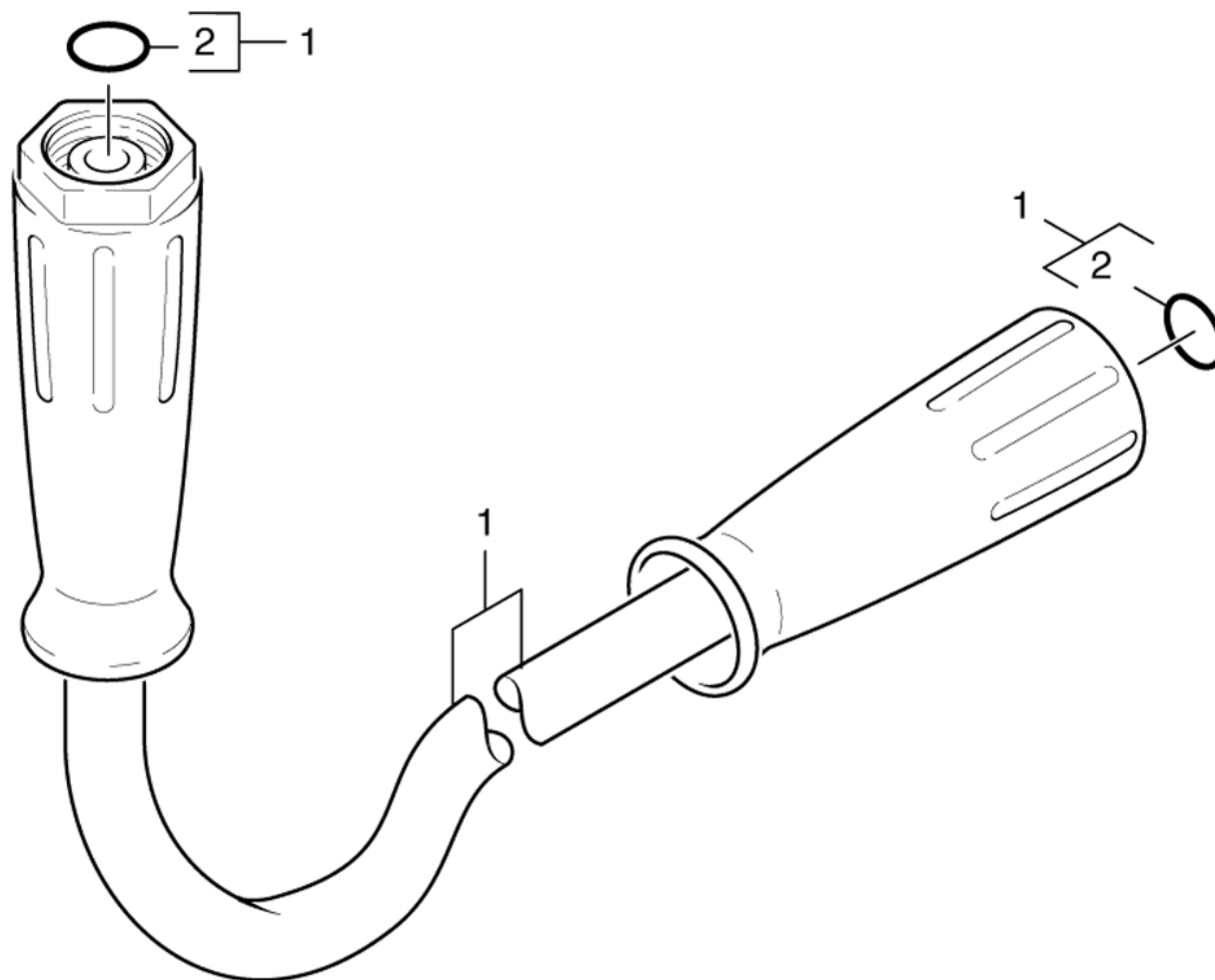
ET/VT (spare/wear parts)	Pos	Material #	Name	Qty.	Unit	from ser.nr.	up to ser.nr.	var. information
X-X	1	4.760-660.0	Jet pipe packaged only for replacement	1.000	ST	0000000000	0000000000	
	2	7.303-129.0	Screw 4x16 -10.9-R2R (K-In6Rd)	6.000	ST	0000000000	0000000000	
	3	5.321-855.0	Handhold few jet pipe with welding bolt	1.000	ST			VERSION 2
	3	5.321-691.0	Handhold few jet pipe	1.000	ST	0000000000	0000000000	VERSION 1
X-X	4	2.880-296.0	Spare part set O-Ring seal 5x	1.000	ST	0000000000	0000000000	
X-X	5	7.401-915.0	Sphere 2,5 G20 -1.4034 DIN 5401	20.000	ST	0000000000	0000000000	
X-X	6	4.363-692.0	Grooved ring kpl. -nur fuer Ersatz-	1.000	ST	0000000000	0000000000	
X-X	7	6.362-524.0	O-Ring seal 17,0 X 1,5	1.000	ST	0000000000	0000000000	
X-X	8	5.401-129.0	Screw connector part	1.000	ST	0000000000	0000000000	

4 Spare part set O-Ring seal 5x (2.880-296.0)

---

Pos	Material #	Name	Qty.	Unit	from ser.nr.	up to ser.nr.
10	6.362-957.0	O-Ring seal 10,0 X 2,0-EPDM 85-90	5.000	ST	0000000000	0000000000

---



## 94 High pressure hose

---

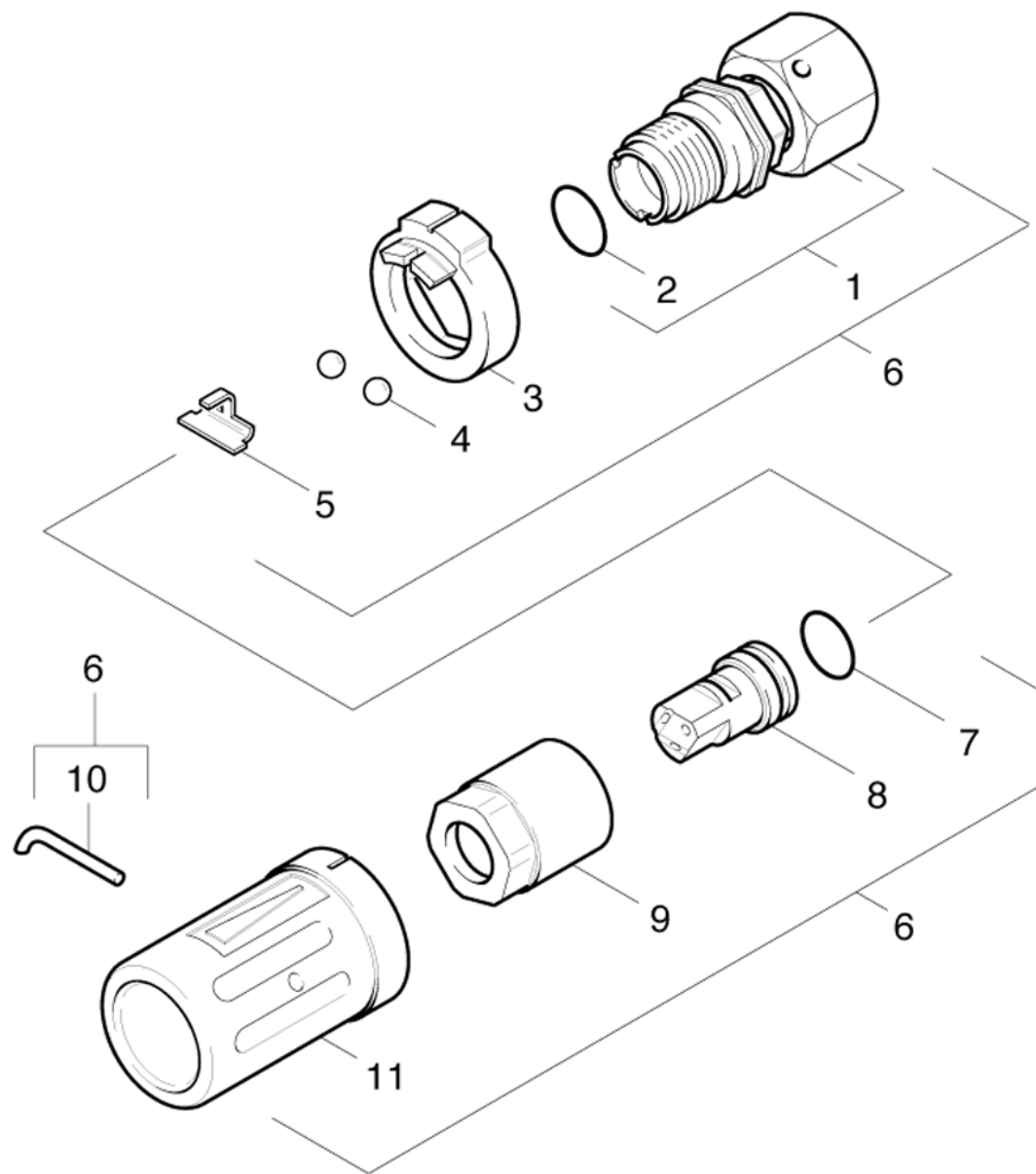
ET/VT (spare/wear parts)	Pos	Material #	Name	Qty.	Unit	from ser.nr.	up to ser.nr.
X-X	1	6.390-010.0	Hose assembly rotatable DN8 max.31,5MPa	1.000	ST	0000000000	0000000000
X-X	2	2.880-296.0	Spare part set O-Ring seal 5x	1.000	ST	0000000000	0000000000

2 Spare part set O-Ring seal 5x (2.880-296.0)

---

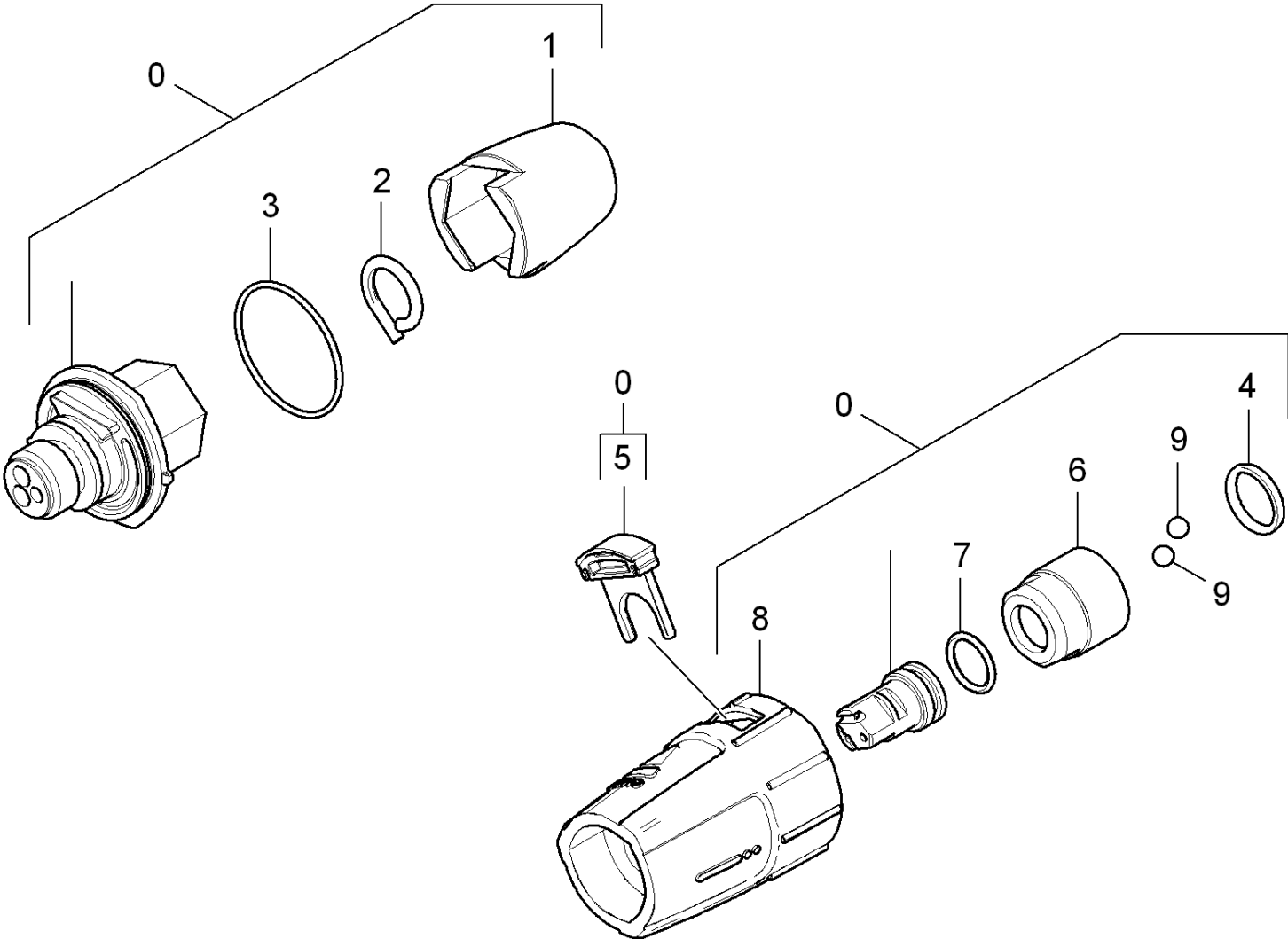
Pos	Material #	Name	Qty.	Unit	from ser.nr.	up to ser.nr.
10	6.362-957.0	O-Ring seal 10,0 X 2,0-EPDM 85-90	5.000	ST	0000000000	0000000000

---



95 Triple jet nozzle

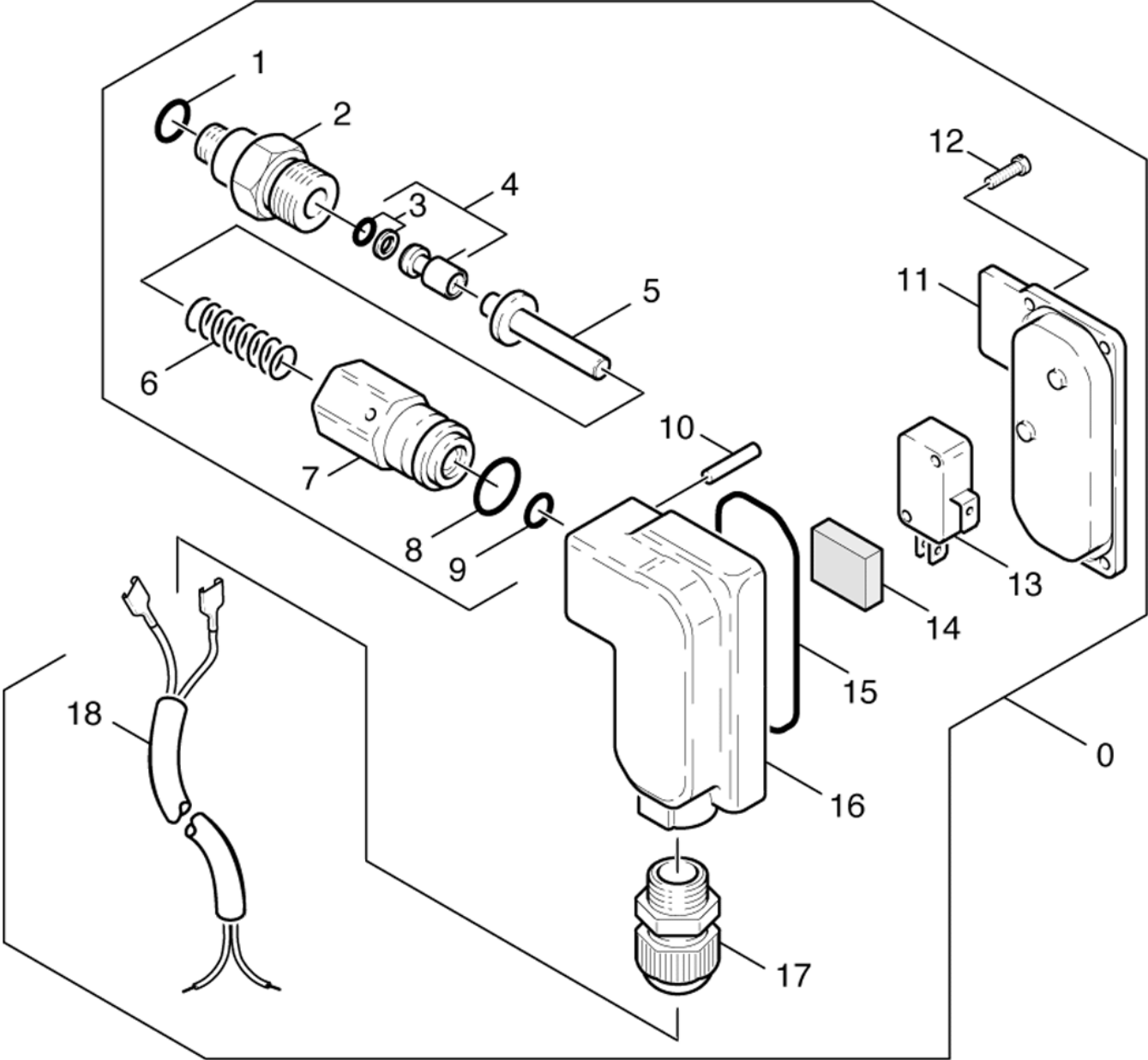
ET/VT (spare/wear parts)	Pos	Material #	Name	Qty.	Unit	from ser.nr.	up to ser.nr.
	1	4.402-042.0	Screw union	1.000	ST	0000000000	0000000000
	2	6.362-460.0	O-Ring seal 14,0 X 2,5-NBR 70	1.000	ST	0000000000	0000000000
	3	5.030-528.0	Moulded part	1.000	ST	0000000000	0000000000
	4	7.401-902.0	Sphere 5 G20 -1.4034 DIN 5401	2.000	ST	0000000000	0000000000
	5	5.042-405.0	Holder	1.000	ST	0000000000	0000000000
	6		Stockpiling discontinued	1.000	ST	0000000000	0000000000
X	7	6.362-480.0	O-Ring seal 12,42x 1,78	1.000	ST	0000000000	0000000000
	8	5.415-600.0	Triple jet nozzle 034	1.000	ST	0000000000	0000000000
	9	5.311-117.0	Hexagon nut	1.000	ST	0000000000	0000000000
	10	5.037-059.0	Hook	1.000	ST	0000000000	0000000000
	11	5.394-269.0	Protection part	1.000	ST	0000000000	0000000000





**96 Nozzle**

ET/VT (spare/wear parts)	Pos	Material #	Name	Qty.	Unit
X-X	0	4.767-147.0	Triple jet nozzle replacement 034	1.000	ST
	1	5.394-530.0	Protection part complete	1.000	ST
	2	6.343-150.0	Pin 03	1.000	ST
	3	6.362-409.0	O-Ring seal 32,0 X 1,5	1.000	ST
	4	6.362-460.0	O-Ring seal 14,0 X 2,5-NBR 70	1.000	ST
	5	5.321-884.0	Clamp	1.000	ST
	6	5.311-225.0	Nut	1.000	ST
X	7	6.362-480.0	O-Ring seal 12,42x 1,78	1.000	ST
	8	5.394-859.0	Protection part	1.000	ST
	9	7.401-902.0	Sphere 5 G20 -1.4034 DIN 5401	2.000	ST



100 Pressure switch

ET/VT (spare/wear parts)	Pos	Material #	Name	Qty.	Unit	from ser.nr.	up to ser.nr.
	0	4.747-050.0	Pressure switch	1.000	ST	0000000000	0000000000
	1	6.362-101.0	O-Ring seal 8 X 2	1.000	ST	0000000000	0000000000
	2	5.305-180.0	Shaped screw	1.000	ST	0000000000	0000000000
X-X	3	6.363-037.0	O-Ring seal complete 1ST.-R.	1.000	ST	0000000000	0000000000
X-X	4	4.553-025.0	Piston	1.000	ST	0000000000	0000000000
	5	5.553-241.0	Piston	1.000	ST	0000000000	0000000000
X-X	6	5.332-158.0	Helical spring	1.000	ST	0000000000	0000000000
	7	5.311-154.0	Hexagon nut	1.000	ST	0000000000	0000000000
X	8	6.362-078.0	O-Ring seal 13,3x2,4	1.000	ST	0000000000	0000000000
X-X	9	6.362-175.0	O-Ring seal 5,28x 1,78	1.000	ST	0000000000	0000000000
	10	7.314-630.0	Straight grooved pin 4,0x20-CU2 ISO 874	1.000	ST	0000000000	0000000000
	11	5.063-412.0	Cover	1.000	ST	0000000000	0000000000
	12	6.303-058.0	Oval head screw 2,9X 13-ST-VERZ	1.000	ST	0000000000	0000000000
	13	6.631-571.0	Micro switch	1.000	ST	0000000000	0000000000
	14	5.365-156.0	Sealing tape cellularrubber	1.000	ST	0000000000	0000000000
	15	6.362-691.0	O-Ring seal	1.000	ST	0000000000	0000000000
	16	5.060-367.0	Housing	1.000	ST	0000000000	0000000000
	17	6.641-355.0	Cable gland PG9	1.000	ST	0000000000	0000000000
	18	4.820-436.0	Cable	1.000	ST	0000000000	0000000000