

FEATURES

- Designed and engineered exclusively for pressure washers.
- Seven year limited warranty.
- Forged brass manifold with an exclusive lifetime warranty.
- Die-cast, anodized aluminum oil-bath crankcase.
- Aluminum two piece connecting rods with lubrication channels for maximum life.
- Heavy-duty crankshaft bearings.
- Solid ceramic plungers with mirror finish and corrosion resistance.
- Stainless steel inlet and discharge valve assemblies.
- Forged valve caps with recessed O-rings.
- Dacromet® coated manifold bolts for extra corrosion resistance.
- Precision oil dipstick for proper ventilation of crankcase.
- Parker® high temperature "U" seals.

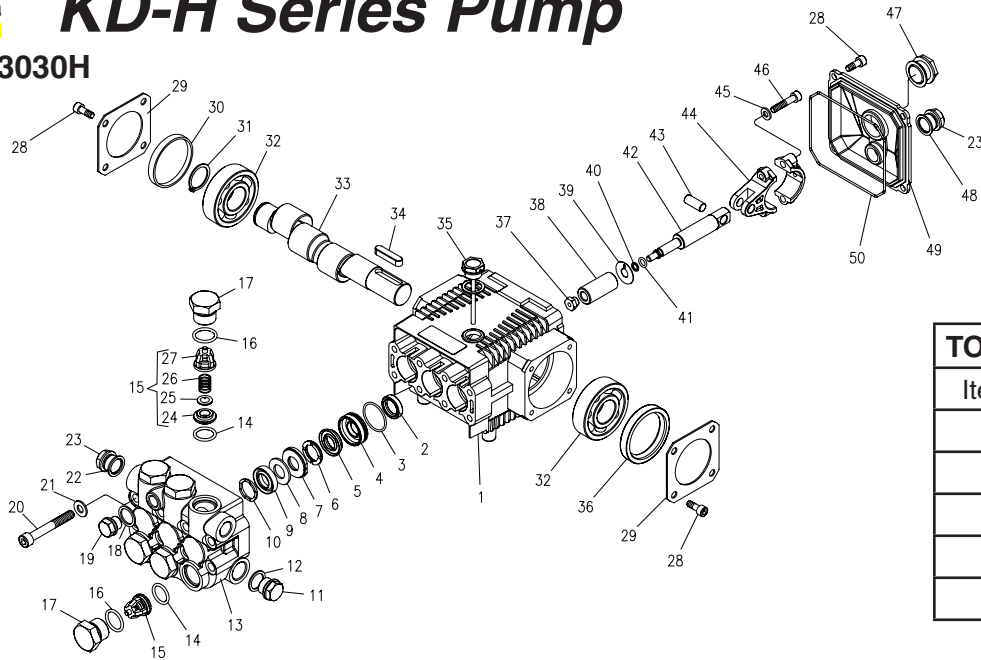


SPECIFICATIONS

PUMP MODEL	KD-3030H
Maximum Volume (GPM/LPM)	3 / 11.3
Max. Discharge Pressure (PSI/BAR)	3000 / 207
Maximum Pump Speed (RPM)	1650
Maximum Inlet Pressure (PSI/BAR)	125 / 8.6
Maximum Inlet Vacuum	2.6 in. HG / 66 mm HG
Bore	15 mm
Stroke	13.6 mm
Crankcase Oil Capacity	14 oz. / .41 liter
Maximum Fluid Temperature	185° F / 85°C
Inlet Port Thread	1/2-14 BSPP-F
Discharge Port Thread	3/8-19 BSPP-F
Shaft Diameter	24 mm
Weight	16 lbs / 7.25 kg
Dimensions (LxWxH) in/mm	8.5 x 8.4 x 5.0 / .22 x .21 x .13
Part Number	9.804-018.0

KD-H Series Pump

9.803-826.0 KD 3030H



TORQUE SPECS	
Item #	Ft.-lbs
17	65
20	18
28	7.6
37	7
46	13

PARTS LIST

ITEM	PART NO.	DESCRIPTION	QTY	ITEM	PART NO.	DESCRIPTION	QTY
1	9.803-938.0	Crankcase	1	28	9.802-939.0	Screw	12
2*	See Kits Below	Plunger Oil Seal	3	29	9.803-953.0	Bearing Cover	2
3*	9.803-939.0	O-Ring Ø1.78 x 28.30	3	30	9.803-954.0	Bearing Seal	1
4*	9.803-940.0	Pressure Ring 15mm	3	31	9.802-914.0	Snap Ring	1
5*	See Kits Below	"U" Seal, 15mm	6	32	9.803-955.0	Ball Bearing	2
6*	9.803-942.0	Support Ring 15mm	6	33	9.803-956.0	Crankshaft	1
7*	9.804-075.0	Intermed. Ring 15mm	3	34	9.803-167.0	Crankshaft Key	1
8*	70-000933	Ring, Teflon 15mm	3	35	9.803-957.0	Oil Dipstick	1
9*	70-000222	"U" Seal 15mm	3	36	9.803-958.0	Crankshaft Seal	1
10*	70-030029	Ring, Support 15mm	3	37*	9.803-959.0	Plunger Nut	3
11	9.802-926.0	Brass Plug 1/2"	1	38*	9.803-960.0	Plunger, 15mm	3
12	9.803-199.0	Copper Washer 1/2"	1	39*	9.803-962.0	Copper Spacer	3
13	9.803-946.0	Manifold Housing	1	40*	9.803-963.0	O-Ring Ø1.78 x 5.28	3
14*	9.803-947.0	O-Ring Ø1.78 x 15.54	6	41*	9.803-156.0	Teflon Ring	3
15*	See Kits Below	Valve Assembly	6	42*	9.803-964.0	Plunger Rod	3
16*	9.803-948.0	O-Ring Ø2.62 x 18.77	6	43	9.803-965.0	Connecting Rod Pin	3
17	9.803-949.0	Valve Plug	6	44	9.803-966.0	Connecting Rod	3
18	9.803-950.0	Copper Washer 1/4	1	45	9.803-218.0	Spring Washer	6
19	9.803-951.0	Brass Plug G1/4	1	46	9.803-967.0	Connecting Rod Screw	6
20	9.803-952.0	Manifold Stud Bolt	8	47	9.803-202.0	Sight Glass	1
21	9.802-884.0	Washer	8	48	9.803-197.0	Gasket	1
22	9.803-198.0	Copper Washer 3/8	1	49	9.803-968.0	Crankcase Cover	1
23	9.802-925.0	Brass Plug 3/8	2	50	9.803-969.0	O-Ring Ø2.62 x 107.62	1

* Available in kit (See below)

REPAIR KITS

REPAIR KIT NUMBER	9.804-076.0	9.804-077.0	9.803-934.0	9.803-936.0	9.803-937.0
KIT DESCRIPTION	*Plunger Seal 15mm KD-3030H	**Complete Seal Packing KD-3030H	Plunger 15mm KD-3030H	Complete Valve	Plunger Oil Seals
ITEM NUMBERS INCLUDED	3, 5, 6, 8, 9, 10	2, 3, 4, 5, 6, 7, 8, 9, 10	37, 38, 39, 40, 41	14, 15, 16	2
NUMBER OF CYLINDERS KIT WILL SERVICE	3	1	1	6	3