

## FEATURES

- Designed and engineered for pressure washers.
- Five year limited warranty.
- Forged brass manifold with an exclusive lifetime warranty.
- Large capacity, die-cast, anodized aluminum oil-bath crankcase.
- Over-sized connecting rods for maximum life.
- Heavy-duty tapered roller bearing.
- Solid ceramic plungers with mirror finish and corrosion resistance.
- Stainless steel inlet and discharge valve assemblies.
- Forged valve caps with recessed O-rings.
- Dacromet® coated manifold bolts for extra corrosion resistance.

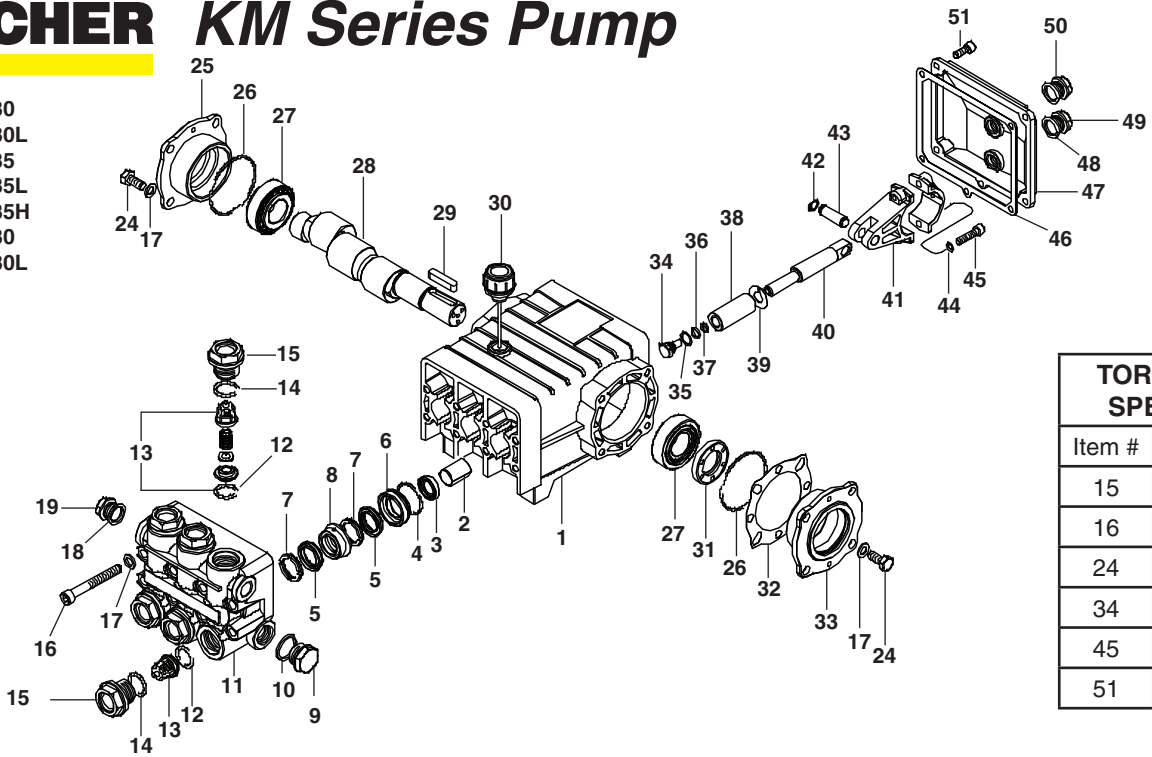


## SPECIFICATIONS

| PUMP MODEL                    | KM-4030                  | KM-4035 | KM-5030 | KM-4035H | KM-3540 |
|-------------------------------|--------------------------|---------|---------|----------|---------|
| Maximum Volume (GPM)          | 4                        | 4.8     | 5.1     | 4.8      | 3.5     |
| Max. Discharge Pressure (PSI) | 3000                     | 3500    | 3000    | 3500     | 4000    |
| Maximum Pump Speed            | 1000                     | 1500    | 1550    | 1500     | 1850    |
| Maximum Inlet Pressure        | 125 PSI                  |         |         |          |         |
| Maximum Inlet Vacuum          | 9 ft. water (7.9 in. HG) |         |         |          |         |
| Bore                          | 20 mm                    | 18 mm   | 20 mm   | 18 mm    | 15 mm   |
| Stroke                        | 17mm                     | 17 mm   | 14.3 mm | 17 mm    | 14.3 mm |
| Crankcase Oil Capacity        | 23.3 oz.                 |         |         |          |         |
| Maximum Fluid Temperature     | 165° F                   |         |         | 185° F   | 165°    |
| Inlet Port Thread             | 1/2-14 BSPP-F            |         |         |          |         |
| Discharge Port Thread         | 3/8-19 BSPP-F            |         |         |          |         |
| Shaft Diameter                | 24 mm                    |         |         |          |         |
| Weight                        | 22 lbs                   |         |         |          |         |
| Dimensions (LxWxH)            | 11 x 8.8 x 5.4 in.       |         |         |          |         |

# KÄRCHER KM Series Pump

9.803-405.0 KM 4030  
 9.803-406.0 KM 4030L  
 9.802-343.0 KM 4035  
 9.803-407.0 KM 4035L  
 9.802-344.0 KM 4035H  
 9.802-342.0 KM 5030  
 9.803-408.0 KM 5030L



| TORQUE SPECS |         |
|--------------|---------|
| Item #       | Ft.-lbs |
| 15           | 75      |
| 16           | 30      |
| 24           | 7.6     |
| 34           | 4.5     |
| 45           | 13      |
| 51           | 7.6     |

## PARTS LIST

| ITEM           | PART NO.                         | DESCRIPTION                | QTY | ITEM        | PART NO.                 | DESCRIPTION          | QTY | ITEM           | PART NO.             | DESCRIPTION              | QTY |
|----------------|----------------------------------|----------------------------|-----|-------------|--------------------------|----------------------|-----|----------------|----------------------|--------------------------|-----|
| 1              | 9.803-162.0                      | Crankcase                  | 1   | 12*         | 9.803-191.0              | O-Ring Ø2.62 x 17.13 | 6   | 35*            | 9.802-885.0          | Copper Spacer            | 3   |
| 2              | 9.803-196.0                      | Plunger Guide              | 3   | 13*         | See Kits Below           | Valve Assembly       | 6   | 36*            | 9.803-188.0          | O-Ring Ø1.78 x 7.66      | 3   |
| 3*             | See Kits Below                   | Plunger Oil Seal           | 3   | 14*         | 9.803-193.0              | O-Ring Ø2.62 x 20.29 | 6   | 37*            | 9.803-155.0          | Teflon Ring              | 3   |
| 4*             | 9.803-189.0                      | O-Ring Ø1.78 x 31.47       | 3   | 15          | 9.802-928.0              | Valve Plug           | 6   | 38*            | See Kits Below       | Plunger (4035, 4035H)    | 3   |
| 5*             | See Kits Below                   | "V" Seal (4035)            | 6   | 16          | 9.802-938.0              | Manifold Stud Bolt   | 8   | See Kits Below | Plunger (4030, 5030) | 3                        |     |
| See Kits Below | See Kits Below                   | "V" Seal (4030, 5030)      | 6   | 17          | 9.802-884.0              | Washer               | 16  | 39*            | 9.802-888.0          | Copper Spacer            | 3   |
| 6*             | 9.803-205.0                      | Pressure Ring 18mm (4035)  | 3   | 18          | 9.803-198.0              | Copper Washer 3/8    | 1   | 40             | 9.803-144.0          | Plunger Rod              | 3   |
| 9.803-204.0    | Pressure Ring 20mm (4030, 5030)  | 3                          | 19  | 9.802-925.0 | Brass Plug 3/8           | 1                    | 41  | 9.803-158.0    | Connecting Rod       | 3                        |     |
| 7*             | 9.803-171.0                      | Support Ring 18mm (4035)   | 6   | 24          | 9.802-944.0              | Hexagonal Screw      | 8   | 42             | 9.802-913.0          | Snap Ring                | 6   |
| 9.803-172.0    | Support Ring 20mm (4030, 5030)   | 6                          | 25  | 9.803-180.0 | Closed Bearing Housing   | 1                    | 43  | 9.802-916.0    | Connecting Rod Pin   | 3                        |     |
| 8*             | 9.803-174.0                      | Intermed. Ring 18mm (4035) | 3   | 26          | 9.803-192.0              | O-Ring Ø1.78 x 60.05 | 2   | 44             | 9.803-218.0          | Spring Washer            | 6   |
| 9.803-173.0    | Intermed. Ring 20mm (4030, 5030) | 3                          | 27  | 9.803-159.0 | Tapered Roller Bearing   | 2                    | 45  | 9.803-238.0    | Connecting Rod Screw | 6                        |     |
| 9              | 9.802-926.0                      | Brass Plug 1/2"            | 1   | 28          | 9.803-146.0              | Crankshaft (5030)    | 1   | 46             | 9.803-185.0          | Cover Gasket             | 1   |
| 10             | 9.803-199.0                      | Copper Washer 1/2"         | 1   | 9.803-142.0 | Crankshaft (4030,4035/H) | 1                    | 47  | 9.803-165.0    | Crankcase Cover      | 1                        |     |
| 11             | 9.802-932.0                      | Manifold Head              | 1   | 29          | 9.803-167.0              | Crankshaft Key       | 1   | 48             | 9.803-197.0          | Gasket, G3/8             | 1   |
|                |                                  |                            |     | 30          | 9.802-921.0              | Oil Dip Stick        | 1   | 49             | 9.802-925.0          | Brass Plug 3/8           | 1   |
|                |                                  |                            |     | 31          | 9.803-140.0              | Crankshaft Seal      | 1   | 50             | 9.803-201.0          | Sight Glass G3/8         | 1   |
|                |                                  |                            |     | 32          | 9.803-178.0              | Shim                 | 2   | 51             | 9.802-939.0          | Cover Screw              | 5   |
|                |                                  |                            |     | 33          | 9.803-179.0              | Bearing Housing      | 1   | 52             | 70-000929            | ▲ Bach Ring 1/2" (4035H) | 3   |
|                |                                  |                            |     | 34*         | 9.802-936.0              | Plunger Bolt         | 3   |                |                      |                          |     |

\* Available in kit (See below) ▲ Not Shown

## REPAIR KITS

| REPAIR KIT NUMBER                    | 9.802-628.0           | 9.802-619.0                  | 9.802-624.0                     | 8.933-022.0                           | 9.802-629.0              | 9.802-620.0             | 9.802-603.0    | 9.802-609.0       |
|--------------------------------------|-----------------------|------------------------------|---------------------------------|---------------------------------------|--------------------------|-------------------------|----------------|-------------------|
| KIT DESCRIPTION                      | *Plunger Seal KM-4035 | Plunger Seal KM-4030 KM-5030 | **Complete Seal Packing KM-4035 | Complete Seal Packing KM-4030 KM-5030 | Plunger KM-4035 KM-4035H | Plunger KM-4030 KM-5030 | Complete Valve | Plunger Oil Seals |
| ITEM NUMBERS INCLUDED                | 4, 5, 7               | 4, 5, 7                      | 3, 4, 5, 6, 7, 8                | 3, 4, 5, 6, 7, 8                      | 34, 35, 36, 37, 38, 39   | 34, 35, 36, 37, 38, 39  | 12, 13, 14     | 3                 |
| NUMBER OF CYLINDERS KIT WILL SERVICE | 3                     | 3                            | 1                               | 1                                     | 1                        | 1                       | 6              | 3                 |

\* For KM 4035H High Heat Packings, Use 9.802-626.0

\*\*For KM 4035H High Heat Packings, Use 9.802-627.0