

## FEATURES

- Five year limited warranty.
- Forged brass manifold with an exclusive lifetime warranty.
- Large capacity, die-cast, anodized aluminum oil-bath crankcase.
- Over-sized connecting rods and crankshaft for maximum life.
- Heavy-duty dual raceway crankcase bearing.
- High load capacity flange needle bearing.
- Solid ceramic plungers with mirror finish and corrosion resistance.
- Parker "V" seals for premium performance.
- Stainless steel inlet and discharge valve assemblies.
- Forged valve caps with recessed O-rings to withstand high pressures.
- Dacromet® coated manifold bolts for superior corrosion resistance.

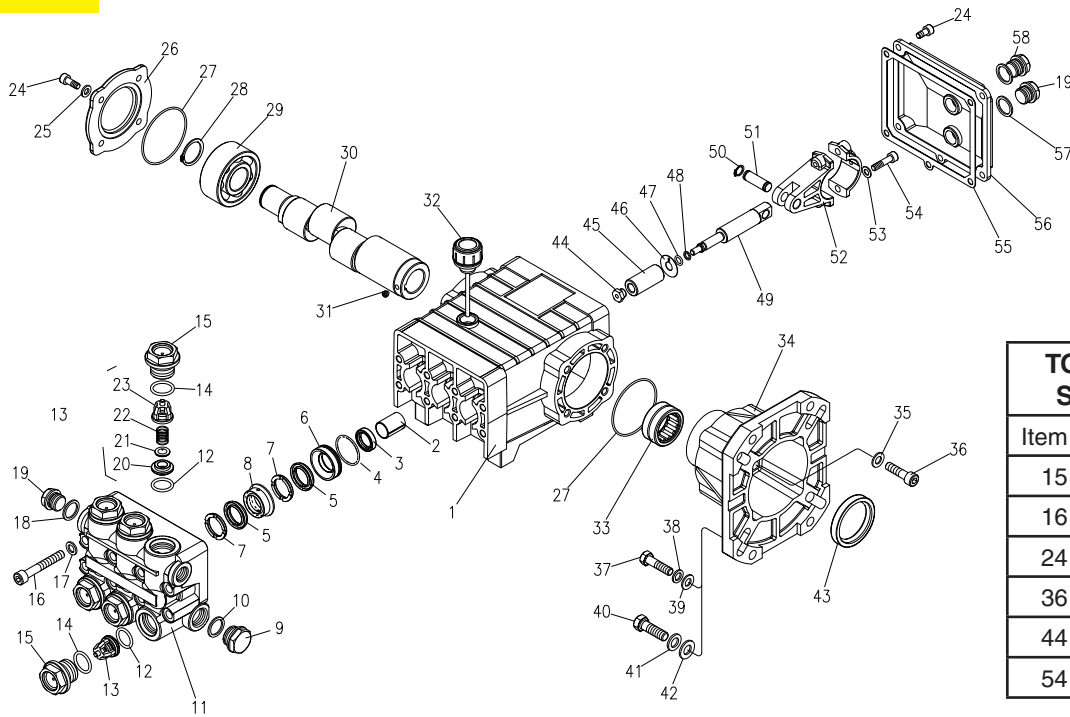


## SPECIFICATIONS

PUMP MODEL	KS3040G	KS3540G	KS4040G	KS5030G
Maximum Volume (GPM)	3	3.5	4	5
Max. Discharge Pressure (PSI)	4000	4000	4000	3000
Maximum Pump Speed	3400	3400	3400	3400
Maximum Inlet Pressure	125 psi			
Maximum Inlet Vacuum	Flooded			
Bore	15 mm	15 mm	15 mm	15 mm
Stroke	7.7 mm	9 mm	10.3 mm	12 mm
Crankcase Oil Capacity	23.3 oz.			
Maximum Fluid Temperature	165°F			
Inlet Port Thread	1/2-14 BSPP-F			
Discharge Port Thread	3/8-19 BSPP-F			
Shaft Diameter	1" Hollow			
Weight	24.5 lbs.			
Dimensions	11 x 10.2 x 5.7 in.			

# **KÄRCHER** *KS Series Pump*

9.802-348.0 KS3040G  
 9.802-349.0 KS3540G  
 9.802-350.0 KS4040G  
 9.803-409.0 KS5030G



TORQUE SPECS	
Item #	Ft.-lbs
15	75
16	30
24	8
36	10
44	4.5
54	13

## PARTS LIST

ITEM	PART NO.	DESCRIPTION	QTY	ITEM	PART NO.	DESCRIPTION	QTY	ITEM	PART NO.	DESCRIPTION	QTY
1	9.802-746.0	Crankcase	1	24	9.802-939.0	Hexagonal Screw	9	40	9.803-244.0	Engine Screw 3/8"	4
2	9.803-196.0	Plunger Guide	3	25	9.803-210.0	Washer	4	41	9.803-216.0	Washer	4
3*	See Kit Below	Plunger Oil Seal	3	26	9.803-184.0	Closed Bearing Housing	1	42	9.803-217.0	Spring Washer	4
4*	9.803-189.0	O-Ring Ø1.78 x 31.47	3	27	9.803-192.0	O-Ring Ø 1.78 x 60.05	2	43	9.803-142.0	Crankshaft Seal	1
5*	See Kit Below	"V" Seal , 15mm	6	28	9.802-914.0	Snap Ring	1	44*	See Kit Below	Plunger Nut	3
6*	See Kit Below	Pressure Ring, 15mm	3	29	9.803-168.0	Double Row Ball Bearing	1	45*	See Kit Below	Plunger, 15mm	3
7*	See Kit Below	Support Ring 15mm	6	30	9.803-150.0	Crankshaft (KS3040G)	1	46*	See Kit Below	Copper Spacer	3
8*	See Kit Below	Intermed. Ring 15mm	3		9.803-151.0	Crankshaft (KS3540G)	1	47*	See Kit Below	O-Ring Ø1.78x5.28	3
9	9.802-926.0	Brass Plug, 1/2"	1		9.803-152.0	Crankshaft (KS4040G)	1	48*	9.803-156.0	Teflon Ring	3
10	9.803-199.0	Copper Washer 1/2"	1		9.803-153.0	Crankshaft (KS5030G)	1	49	9.803-145.0	Plunger Rod	3
11	9.802-932.0	Manifold Housing	1	31	9.802-945.0	Set Screw	1	50	9.802-913.0	Snap Ring	6
12*	9.803-191.0	O-Ring Ø2.62 x 17.13	6	32	9.802-921.0	Oil Dip Stick	1	51	9.802-916.0	Connecting Rod Pin	3
13*	See Kit Below	Valve Assembly	6	33	9.803-161.0	Needle Roller Bearing	1	52	9.803-158.0	Connecting Rod	3
14*	9.803-191.0	O-Ring Ø2.62 x 20.29	6	34	9.803-183.0	Engine Flange	1	53	9.803-218.0	Spring Washer	6
15	9.802-928.0	Valve Plug	6	35	9.803-221.0	Spring Washer	4	54	9.803-238.0	Connecting Rod Screw	6
16	9.802-938.0	Manifold Stud Bolt	8	36	9.803-240.0	Flange Screw	4	55	9.803-185.0	Cover Gasket	1
17	9.802-884.0	Washer	8	37	9.803-243.0	Engine Screw, 5/16"	4	56	9.803-165.0	Crankcase Cover	1
18	9.803-198.0	Copper Washer 3/8"	1	38	9.803-215.0	Washer	4	57	9.803-197.0	Gasket, G3/8	1
19	9.802-925.0	Brass Plug 3/8"	2	39	9.802-889.0	Spring Washer	4	58	9.803-201.0	Sight Glass, G3/8	1

\* Part available in kit (See below)

## REPAIR KITS

REPAIR KIT NUMBER	9.802-622.0	9.802-623.0	9.802-621.0	9.802-603.0	9.802-609.0
KIT DESCRIPTION	Plunger Seal 15mm	Complete Seal Packing 15mm	Plunger 15mm	Complete Valve	Plunger Oil Seals
ITEM NUMBERS INCLUDED	4, 5, 7	3, 4, 5, 6, 7, 8	44, 45, 46, 47, 48	12, 13, 14	3
NUMBER OF CYLINDERS KIT WILL SERVICE	3	1	1	6	3