

FEATURES

- Five year limited warranty.
- Forged brass manifold with an exclusive lifetime warranty.
- Large capacity, die-cast, anodized aluminum oil-bath crankcase.
- Over-sized connecting rods and crankshaft for maximum life.
- Heavy-duty tapered roller bearing.
- Solid ceramic plungers with mirror finish and corrosion resistance.
- Parker "V" seals for premium performance.
- Stainless steel inlet and discharge valve assemblies.
- Forged valve caps with recessed O-rings to withstand high pressures.
- Dacromet® coated manifold bolts for superior corrosion resistance.

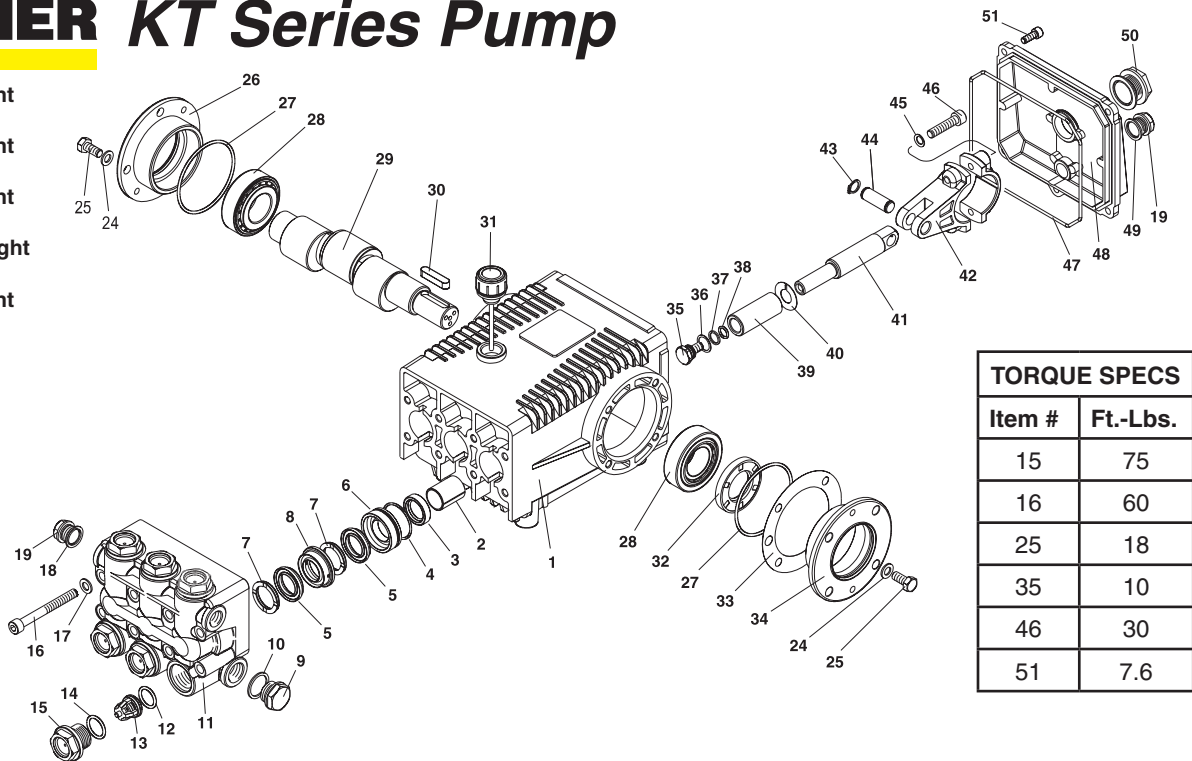


SPECIFICATIONS

PUMP MODEL	KT-4035	KT-4040	KT-5030	KT-6035
Maximum Volume (GPM)	4.2	4	5	6
Max. Discharge Pressure (PSI)	4000	4000	3000	3500
Maximum Pump Speed	1325	1030	1060	1540
Maximum Inlet Pressure	125 psi			
Maximum Inlet Vacuum	9 ft. water (7.9 in. Hg)			
Bore	20	20	22	20
Stroke	14	17	17	17
Crankcase Oil Capacity	40.6 oz.			
Maximum Fluid Temperature	165° F			
Inlet Port Thread	1/2-14 BSPP-F			
Discharge Port Thread	3/8-19 BSPP-F			
Shaft Diameter	25 mm			
Weight	33 lbs.			
Dimensions	12.5 x 9.3 x 6.9 in.			

KÄRCHER KT Series Pump

- 9.802-345.0 KT 4035 Right
- 9.803-410.0 KT 4035 Left
- 9.803-411.0 KT 4040 Right
- 9.803-412.0 KT 4040 Left
- 9.803-413.0 KT 5030 Right
- 9.803-414.0 KT 5030 Left
- 9.803-415.0 KT 5030H Right
- High Heat Packings
- 9.802-346.0 KT 6035 Right
- 9.803-416.0 KT 6035 Left



TORQUE SPECS	
Item #	Ft.-Lbs.
15	75
16	60
25	18
35	10
46	30
51	7.6

PARTS LIST

ITEM	PART NO.	DESCRIPTION	QTY	ITEM	PART NO.	DESCRIPTION	QTY	ITEM	PART NO.	DESCRIPTION	QTY
1	9.804-604.0	Crankcase	1	13*	See Kit Below	Valve Assembly	6	35*	9.803-235.0	Plunger Bolt	3
2	9.803-195.0	Plunger Guide	3	14*	9.803-193.0	O-Ring Ø2.62 x 20.29	6	36*	9.802-886.0	Copper Spacer	3
3*	See Kit Below	Plunger Oil Seal	3	15	9.802-928.0	Valve Plug	6	37*	9.803-187.0	O-Ring Ø1.78 x 10.82	3
4*	9.803-190.0	O-Ring Ø1.78 x 31, 47	3	16	9.802-943.0	Manifold Stud Bolt	8	38*	9.803-154.0	Teflon Ring	3
5*	See Kit Below	"V" Seal, Plunger	6	17	9.802-890.0	Washer	8	39*	See Kit Below	Plunger (KT 4035, 4040, 6035)	3
	See Kit Below	"V" Seal Plunger	6	18	9.803-198.0	Copper Washer 3/8"	1		See Kit Below	Plunger (KT 5030)	3
6*	9.803-206.0	Pressure Ring (KT 4035, 4040, 6035)	3	19	9.802-925.0	Brass Plug 3/8"	1	40*	9.802-887.0	Copper Spacer	3
	9.803-207.0	Pressure Ring (KT 5030)	3	24	9.802-884.0	Washer	8	41	9.803-143.0	Plunger Rod	3
7*	9.803-169.0	Support Ring (KT 4035, 4040, 6035)	6	25	9.802-944.0	Hexagonal Screw	8	42	9.803-157.0	Connecting Rod	3
	9.803-170.0	Support Ring (KT 5030)	6	26	9.803-182.0	Closed Bearing Housing	1	43	9.802-912.0	Snap Ring	6
8*	9.803-175.0	Intermed. Ring (KT 4035, 4040, 6035)	3	27	9.803-186.0	O-Ring Ø2.62 x 71.12	2	44	9.802-915.0	Connecting Rod Pin	3
	9.803-176.0	Intermed. Ring (KT 5030)	3	28	9.803-160.0	Roller Bearing, Tapered	2	45	9.802-889.0	Spring Washer	6
9	9.802-926.0	Brass Plug, 1/2"	1	29	9.803-148.0	Crankshaft (KT 4040, 5030, 6035)	1	46	9.802-937.0	Connecting Rod Screw	6
10	9.803-199.0	Copper Washer 1/2"	1		9.803-149.0	Crankshaft (KT 4035)		47	9.803-194.0	O-Ring Ø2.62 x 152.07	1
11	9.802-933.0	Manifold Head	1	30	9.803-167.0	Crankshaft Key	1	48	9.803-166.0	Crankcase Cover	1
12*	9.803-191.0	O-Ring Ø2.62 x 17.13	6	31	9.802-923.0	Oil Dip Stick	1	49	9.803-197.0	Gasket, G3/8	1
				32	9.803-139.0	Crankshaft Seal	1	50	9.803-202.0	Sight Glass G3/4	1
				33	9.803-177.0	Shim	2	51	9.802-939.0	Cover Screw	5
				34	9.803-181.0	Bearing Housing	1				

* Part available in kit (See below)

REPAIR KITS

REPAIR KIT NUMBER	9.802-605.0	9.802-610.0*	9.802-625.0	9.802-618.0**	9.802-607.0	9.802-611.0	9.802-603.0	9.802-606.0
KIT DESCRIPTION	Plunger Seal KT-4040, KT-6035 KT-4035	Plunger Seal KT-5030	Complete Seal Packing KT-4040 KT-6035 KT-4035	Complete Seal Packing KT-5030	Plunger KT-4040 KT-6035 KT-4035	Plunger KT-5030	Complete Valve (all pumps)	Plunger Oil Seals (all pumps)
ITEM NUMBERS INCLUDED	4, 5, 7	4, 5, 7	3, 4, 5, 6, 7, 8	3, 4, 5, 6, 7, 8	35, 36, 37, 38, 39, 40	35, 36, 37, 38, 39, 40	12, 13, 14	3
NO. OF CYLINDERS KIT WILL SERVICE	3	3	1	1	1	1	6	3

* High Heat, Use 9.802-631.0 KT-5030H/R

** High Heat, Use 9.802-630.0 KT-5030H/R