

**Spare parts list**  
**(5.955-189.0) Spare parts list HD 1050 DE**

## DE HINWEISE

### Weitere Sprachen:

Diese Ersatzteilliste ist in weiteren Sprachen erhältlich. Sie erhalten diese unter [www.kaercher.com](http://www.kaercher.com) im Bereich Service.  
Die Schreibweise der Teilenummer, z.B. 75456380, entspricht der Teilenummer 7.545-638.0.

### Mengenangaben:

Die Mengenangaben in der Ersatzteilliste entsprechen den in der Baugruppe verbauten Stückzahlen der Bauteile.

### Meterware:

Ersatzteile welche als Meterware geliefert werden sind auf Einbaulänge selbst zu kürzen. Die Stückzahlen sind als Mindestbestellmenge =1m angegeben und müssen je nach Bedarf auf weitere volle Meterzahlen erhöht werden.

### Versionen/ Werknummern:

Sind Versionen oder Werknummern in der Ersatzteilliste angegeben, ist anhand dieser vor Bestellung zu prüfen, welches Bauteil für ihr Gerät verwendet werden muss.

### Lackierte Teile:

Bei Bestellungen von lackierten Teilen welche in der Ersatzteilliste nicht in verschiedenen Farben ausgewiesen sind, ist zusätzlich die Farbnummer oder Farbe mit anzugeben.

### Technische Änderungen:

Technische Änderungen sowie das Recht der ausschließlichen Auswertung unseres geistigen Eigentums behalten wir uns vor.

## EN INSTRUCTIONS

### Other languages:

This list of spare parts is also available in other languages. You can get this list from [www.kaercher.com](http://www.kaercher.com) in the Service division.  
The designation of the part number e.g. 75456380 is equal to 7.545-638.0.

### Quantity details:

The quantity details in the spare parts list correspond to the number of pieces of the component installed in the assembly group.

### Piece goods:

Spare parts that are sold as piece goods are to be cut to the desired length. The quantities have been indicated as minimum order quantity =1m and must be rounded off to the full meter figure depending on your requirements.

### Version/ Plant numbers:

If version or plant numbers are mentioned in the spare parts list, then use the same to check before ordering which spare part needs to be used for your appliance.

### Painted parts:

While ordering painted parts that are not mentioned in the spare parts list in their colour variations, please mention the colour number or the colour you require.

### Technical changes:

We reserve the right to make technical changes as well as the right to exclusive use of our intellectual property.

## FR REMARQUES

### Autres langues:

Cette liste de pièces de rechange est disponible en autres langues. Cela est disponible sous [www.kaercher.com](http://www.kaercher.com) dans le menu Service.  
La désignation du numéro de pièce, par ex. 75456380, correspond au numéro de pièce 7.545-638.0.

### Indications de quantité:

Les indications de quantité dans la liste de pièces de rechange correspondre aux nombres de pièces des composant utilisées dans la construction.

### Matériel au mètre:

Les pièces de rechange qui sont livrées au mètre doivent être raccourcies à longueur souhaitée par l'acheteur même. Les nombres des pièces sont indiquées en quantité de commande minimale = 1m et doivent être augmentés selon le besoin à une chiffre de mètre complète.

### Versions/ Numéros d'usine:

Lorsqu'il sont indiquées des versions ou des numéros d'usine dans la liste de pièces de rechange, vous devez vérifier que composant doit être utilisé pour votre appareil.

### Pièces laquées:

Pour commander des pièces laquées, où les différentes couleurs ne sont pas indiquées dans la liste des pièces de rechange, vous devez indiquer en plus le numéro de la couleur ou seulement la couleur.

### Modifications techniques:

Nous nous réservons la possibilité des modifications techniques ainsi le droit d'exploitation exclusive de notre propriété intellectuelle.

## IT AVVERTENZE

### Altre lingue:

Il presente elenco di parti di ricambio è disponibile sul nostro sito Web anche in altre lingue: sotto [www.kaercher.com](http://www.kaercher.com) alla voce "Service".

L'indicazione del codice pezzo, ad es. 75456380, corrisponde al codice pezzo 7.545-638.0

### Indicazioni di quantità:

Le indicazioni di quantità riportate dall'elenco "parti di ricambio" corrispondono al numero delle singole componenti contenute nella rispettiva unità.

### Merce a metro:

Le parti di ricambio fornite come "merce a metro" devono venire in seguito accorciate alla lunghezza necessaria per il montaggio. La quantità unitaria è indicata come "quantità minima di ordinazione = 1m" e deve all'occorrenza venire moltiplicata per il numero intero di metri necessari.

### Versioni / Numeri di fabbricazione:

Quando l'elenco "parti di ricambio" riporta diverse versioni o numeri di fabbricazione, confrontare la versione o il numero di fabbricazione del ricambio desiderato con quelle/i presenti nell'elenco e indicarla/o al momento dell'ordinazione.

### Parti di ricambio verniciate:

Nel caso di ricambi verniciati, se l'elenco parti di ricambio non ne riporta espressamente i diversi colori, al momento dell'ordinazione è necessario indicare anche il colore o il numero del colore desiderato.

### Modifiche tecniche:

Ci riserviamo il diritto di apportare modifiche tecniche così come il diritto di utilizzo esclusivo della nostra proprietà intellettuale.

## ES INDICACIONES

### Otros idiomas:

La lista de piezas de repuesto se puede adquirir en otros idiomas. La puede adquirir en [www.kaercher.com](http://www.kaercher.com) en el área de servicios.

La notación de los números de las piezas, p.ej. 75456380 corresponde al número de pieza 7.545-638.0.

### Cantidades:

Las indicaciones de cantidades de la lista de piezas de repuesto corresponden al número de piezas montadas en el componente.

### Mercancía por metros:

Las piezas de repuesto que se suministran por metros se pueden cortar al largo deseado. La unidad mínima de pedido es de = 1 m y el número de metros completos se puede aumentar según necesidad.

### Versiones/números de fábrica:

Si se indica la versión o número de fábrica en la lista de piezas de repuesto, se debe comprobar en ella la pieza a usar para su aparato antes de realizar el pedido.

### Piezas lacadas:

Al realizar pedidos de piezas lacadas que no estén indicadas en los diferentes colores en la lista de piezas de repuesto, se debe indicar también la referencia del color o el color.

### Modificaciones técnicas:

Reservados los derechos de realizar modificaciones técnicas y aprovechar nuestra propiedad intelectual.

## PL WSKAZÓWKI

### Pozostałe języki:

Ta lista części zamiennych jest dostępna w także w innych językach. Mogą ją Państwo pobrać ze strony [www.kaercher.com](http://www.kaercher.com) w dziale Serwis.

Sposób zapisywania numeru części, np. 75456380, odpowiada numerowi części 7.545-638.0.

### Dane ilości:

Dane ilości podane w liście części zamiennych odpowiadają liczbie sztuk podzespołów tworzących dany moduł.

### Towar sprzedawany na metry:

Części zamienne dostarczane jako towar sprzedawany na metry po zamontowaniu należy samodzielnie skrócić do potrzebnej długości. Liczba sztuk podana jest jako minimalna ilość zamówienia = 1m i w zależności od potrzeb zwiększa się ją o kolejne pełne metry.

### Wersje/ Numer zakładu:

Jeżeli w liście części zamiennych podane są wersje lub numery zakładu, przed zamówieniem na ich podstawie należy sprawdzić, który podzespół stosuje się w Państwa urządzeniu.

### Części lakierowane:

W przypadku zamówień części lakierowanych, które w liście części zamiennych nie podano w wielu kolorach, należy dodatkowo zaznaczyć nr koloru lub kolor.

### Zmiany techniczne:

Zastrzegamy sobie prawo do zmian technicznych oraz wyłącznego wykorzystywania naszej własności intelektualnej.

## **RU УКАЗАНИЯ:**

### **Другие языки:**

Данный список запасных частей также доступен на других языках. Вы найдете его на сайте [www.kaercher.com](http://www.kaercher.com) в разделе Service  
Маркировка номера детали, например, 75456380, соответствует номеру детали 7.545-638.0.

### **Указание количества:**

Количественные данные в списке запасных частей соответствуют числу компонентов, входящих в состав узлов.

### **Товар, продаваемый на метры:**

Запасные части, продающиеся на метры, необходимо обрезать до нужной длины. Число изделий указано в виде минимального объема заказа = 1м и их количество можно округлить до требуемого по мере необходимости.

### **Варианты исполнения/заводские номера:**

Если варианты исполнения или заводские номера указаны в списке запасных частей, то перед заказом необходимо проверить, какая деталь подходит для вашего устройства.

### **Лакированные детали:**

При заказе лакированных деталей, варианты расцветки которых не указаны в списке запасных частей, необходимо дополнительно указать номер цвета или необходимый для вас цвет.

### **Технические изменения:**

Мы оставляем за собой право на технические изменения, а также право на исключительное использование нашей интеллектуальной собственности.

## Table of contents

---

<b>Spare parts list HD 1050 DE (5.955-189.0)</b> .....	<b>6</b>
10 Individual parts (0.101-648.0) .....	7
11 Individual parts (0.101-649.0) .....	8
12 Base frame (0.101-650.0) .....	11
20 Pump set (0.106-528.0) .....	14
21 Excess-current (0.106-847.0) .....	15
22 Speed control (0.106-526.0) .....	17
23 Cylinder head (0.106-527.0) .....	19
24 Chemistry (0.106-468.0) .....	21
25 Piston (0.106-400.0) .....	23
100 PUMPSET (2.883-285.0) .....	25
30 Motor (0.111-533.0) .....	27
31 Motor (0.111-534.0) .....	28
32 Motor (0.113-836.0) .....	30
33 Transmission (0.111-559.0) .....	32
40 Accessories (0.146-205.0) .....	34
41 Hand trigger gun (0.146-587.0) .....	35
100 Spare part set 4.775-041 (2.880-369.0) .....	38
42 Jet pipe (0.146-383.0) .....	39
7 Spare part set O-Ring seal 5x (2.880-296.0) .....	41
43 Jet pipe (0.148-571.0) .....	42
4 Spare part set O-Ring seal 5x (2.880-296.0) .....	44
44 Nozzle (0.147-872.0) .....	45

**Spare parts list HD 1050 DE (5.955-189.0)**

---

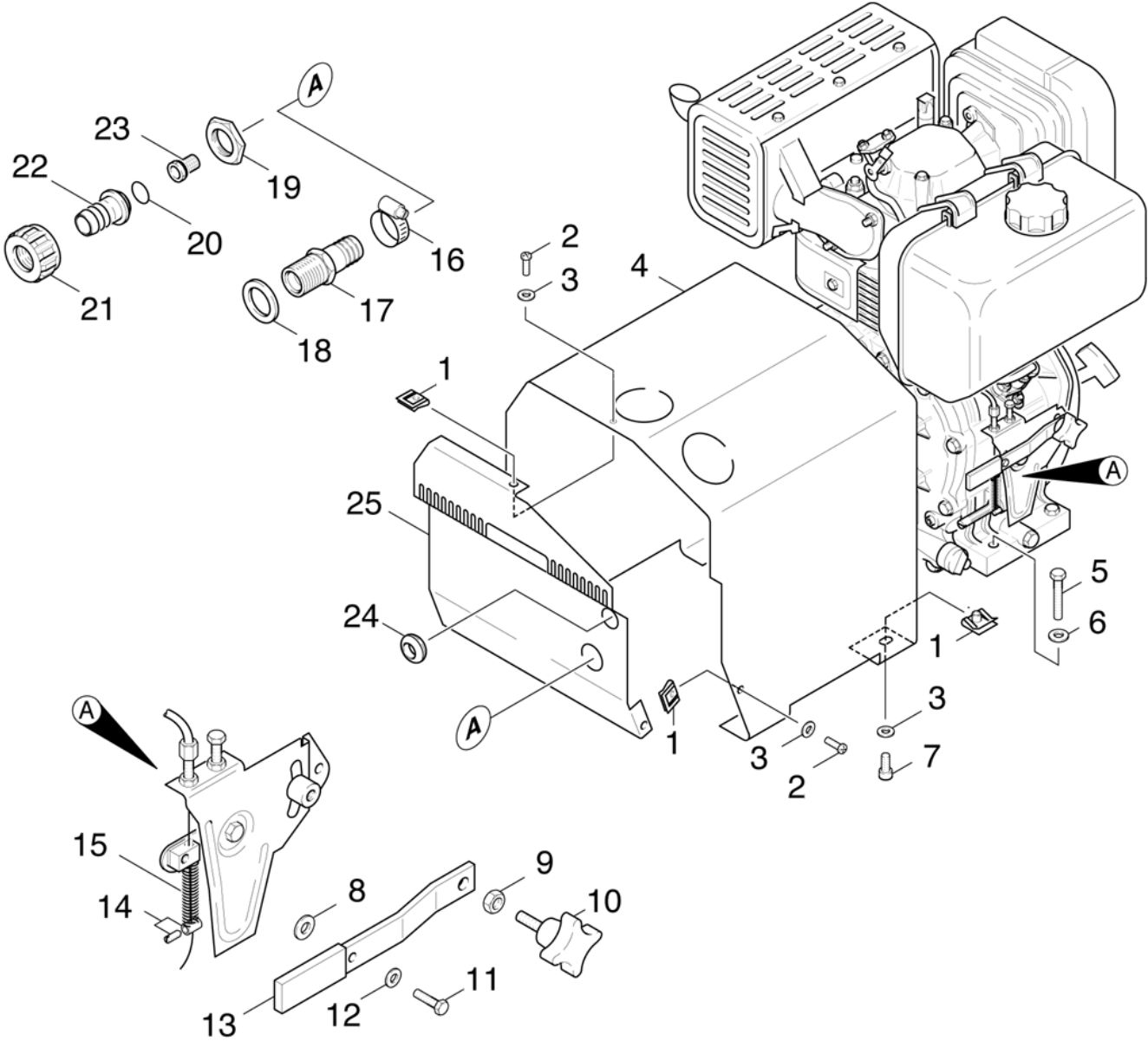
<b>Pos</b>	<b>Material #</b>	<b>Name</b>	<b>from ser.nr.</b>	<b>up to ser.nr.</b>
10	0.101-648.0	Individual parts	0000000000	0000000000
20	0.106-528.0	Pump set	0000000000	0000000000
30	0.111-533.0	Motor	0000000000	0000000000
40	0.146-205.0	Accessories	0000000000	0000000000

**10 Individual parts (0.101-648.0)**

---

Pos	Material #	Name	Qty.	Unit	from ser.nr.	up to ser.nr.
11	0.101-649.0	Individual parts	1.000	ST	0000000000	0000000000
12	0.101-650.0	Base frame	1.000	ST	0000000000	0000000000

11 Individual parts (0.101-649.0)





## 11 Individual parts (0.101-649.0)

ET/VT (spare/wear parts)	Pos	Material #	Name	Qty.	Unit	from ser.nr.	up to ser.nr.
	1	6.310-051.0	Putting nut M 5	7.000	ST	0000000000	0000000000
	2	7.306-077.0	Screw M5x16 -8.8-R2R (In6Rd)	3.000	ST	0000000000	0000000000
X-X	3	7.312-002.0	Washer 5-200HV-A3E ISO 7090	7.000	ST	0000000000	0000000000
	4	7.777-999.0	Stockpiling discontinued	1.000	ST	0000000000	0000000000
	5	7.304-404.0	Hexagonal head screw M8x40-8.8-A2E ISO	3.000	ST	0000000000	0000000000
X-X	6	7.312-004.0	Washer 8 -200HV-A3E ISO 7090	3.000	ST	0000000000	0000000000
	7	7.306-090.0	Screw M6x16 -8.8-R3R (In6Rd)	4.000	ST	0000000000	0000000000
X	8	7.312-264.0	Washer 5-100HV-A3E ISO 7094	1.000	ST	0000000000	0000000000
X	9	7.311-512.0	Hexagon nut M 6-8-A2E ISO 7040	1.000	ST	0000000000	0000000000
X-X	10	6.321-069.0	Handhold M6x20	1.000	ST	0000000000	0000000000
	11	7.306-057.0	Screw M4x10 -8.8-R2R (In6Rd)	1.000	ST	0000000000	0000000000
	12	7.312-001.0	Washer 4 -200HV-A3E ISO 7089	1.000	ST	0000000000	0000000000
	13	4.481-058.0	Lever	1.000	ST	0000000000	0000000000
	14	6.431-053.0	Clamping bolt	1.000	ST	0000000000	0000000000
X-X	15	5.332-264.0	Helical spring	1.000	ST	0000000000	0000000000
X-X	16	6.388-548.0	Hose clip	1.000	ST	0000000000	0000000000
	17	7.777-999.0	Stockpiling discontinued	1.000	ST	0000000000	0000000000
X-X	18	7.312-060.0	Washer 24-100HV-A3E ISO 7091	1.000	ST	0000000000	0000000000
	19	6.310-055.0	Nut G3/4"	1.000	ST	0000000000	0000000000
X-X	20	6.362-161.0	O-Ring seal 19,3 X 2,4	1.000	ST	0000000000	0000000000
	21	5.310-071.0	Nut	1.000	ST	0000000000	0000000000
X-X	21	5.310-076.0	Nut	1.000	ST	0000000000	0000000000
Position text: / 1.878-602.0							
X-X	22	5.443-282.0	Hose stem	1.000	ST	0000000000	0000000000
X-X	22	5.443-291.0	Hose stem	1.000	ST	0000000000	0000000000
Position text: / 1.878-602.0							

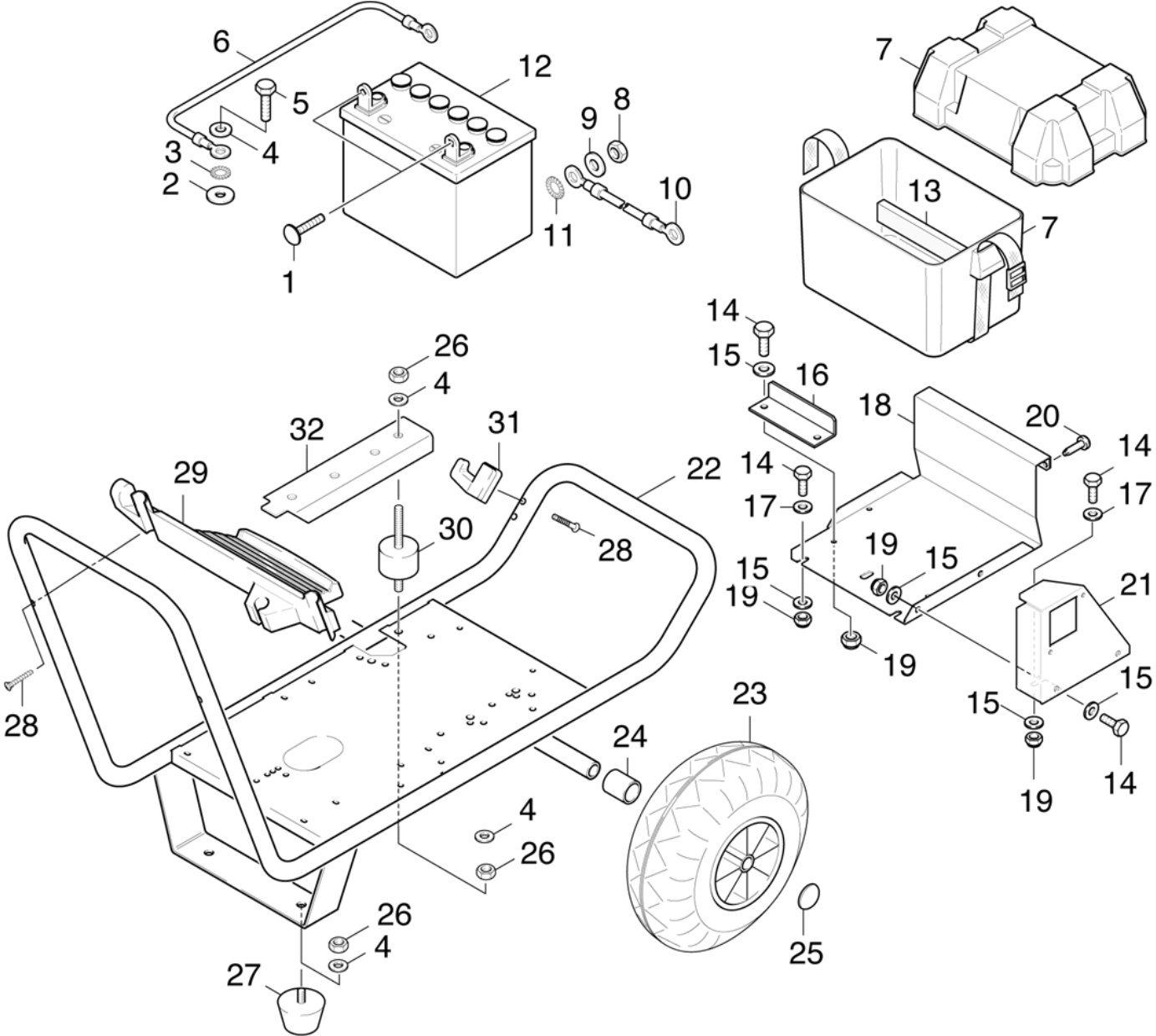
11 Individual parts (0.101-649.0)

---

ET/VT (spare/wear parts)	Pos	Material #	Name	Qty.	Unit	from ser.nr.	up to ser.nr.
X-X	23	6.414-282.0	Strainer	1.000	ST	0000000000	0000000000
	24	6.641-640.0	Wire protecting sleeve D21	1.000	ST	0000000000	0000000000
	25	7.777-999.0	Stockpiling discontinued	1.000	ST	0000000000	0000000000

---

12 Base frame (0.101-650.0)



12 Base frame (0.101-650.0)

ET/VT (spare/wear parts)	Pos	Material #	Name	Qty.	Unit	from ser.nr.	up to ser.nr.
	1	7.303-800.0	Round head bolt 1/4-20X1 1/4-ST-VZ G.2AS	2.000	ST	0000000000	0000000000
X	2	7.312-277.0	Washer 8-200HV-A2E ISO7093-1	1.000	ST	0000000000	0000000000
X-X	3	7.312-166.0	Toothed lock washer A8,4-FSt-A3E DIN 67	1.000	ST	0000000000	0000000000
X-X	4	7.312-004.0	Washer 8 -200HV-A3E ISO 7090	9.000	ST	0000000000	0000000000
	5	7.304-404.0	Hexagonal head screw M8x40-8.8-A2E ISO	1.000	ST	0000000000	0000000000
	6	7.777-999.0	Stockpiling discontinued	1.000	ST	0000000000	0000000000
	7	6.654-025.0	Housing battery	1.000	ST	0000000000	0000000000
	8	7.311-800.0	Hexagon nut 1/4"-20-ST-VZ ASME B18.2.2	2.000	ST	0000000000	0000000000
	9	7.312-901.0	Washer 1/4"-ST-VZ ANSI B18.22.1	2.000	ST	0000000000	0000000000
	10	4.820-518.0	Cable red 16,0mm <sup>2</sup> x650mm	1.000	ST	0000000000	0000000000
	11	7.312-902.0	Toothed lock washer 1/4"-ST-VZ ANSI B18.	2.000	ST	0000000000	0000000000
	12	6.654-024.0	Battery	1.000	ST	0000000000	0000000000
	13	6.273-120.0	Adhesiv cloth tape Zellkautschuk	2.000	M	0000000000	0000000000
	14	7.306-090.0	Screw M6x16 -8.8-R3R (In6Rd)	10.000	ST	0000000000	0000000000
X-X	15	7.312-003.0	Washer 6 -200HV-A3E ISO 7090	17.000	ST	0000000000	0000000000
	16	5.018-876.0	Angle	1.000	ST	0000000000	0000000000
X-X	17	7.312-276.0	Washer 6 -200HV-A2E ISO7093-1	2.000	ST	0000000000	0000000000
	18	5.045-646.0	Sheet metal component	1.000	ST	0000000000	0000000000
X	19	7.311-512.0	Hexagon nut M 6-8-A2E ISO 7040	8.000	ST	0000000000	0000000000
	20	6.303-105.0	Screw M6x20-ST-A2R DIN 7500-1	2.000	ST	0000000000	0000000000
	21	7.777-999.0	Stockpiling discontinued	1.000	ST	0000000000	0000000000
	22	4.050-180.0	Frame	1.000	ST	0000000000	0000000000
X-X	23	6.435-310.0	Wheel	2.000	ST	0000000000	0000000000
X-X	24	5.110-378.0	Sleeve	2.000	ST	0000000000	0000000000
X-X	25	6.343-137.0	Quick-fastener	2.000	ST	0000000000	0000000000

**12 Base frame (0.101-650.0)**

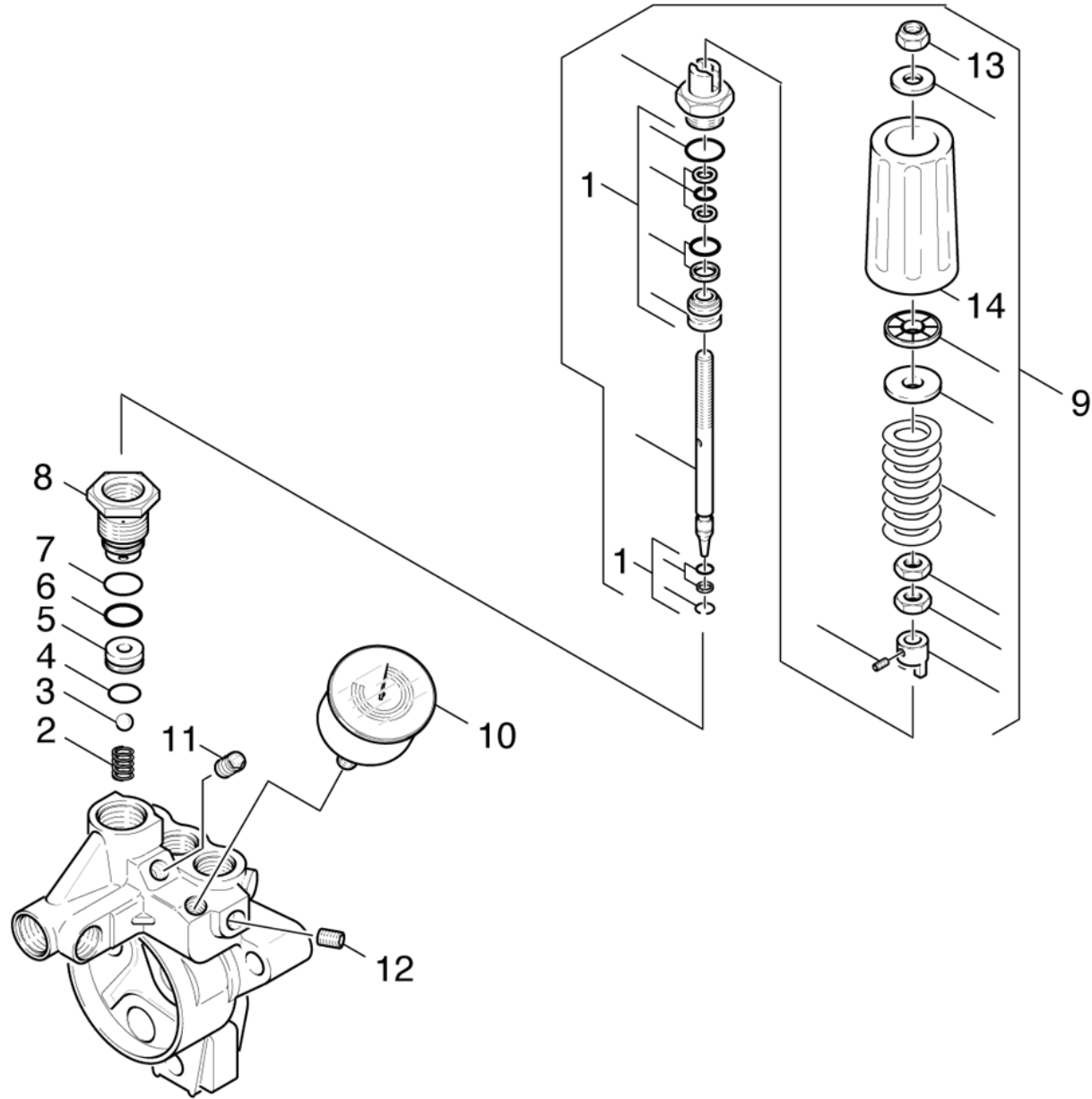
ET/VT (spare/wear parts)	Pos	Material #	Name	Qty.	Unit	from ser.nr.	up to ser.nr.
X-X	26	7.311-427.0	Hexagon nut M8 -04-A2E ISO 10511	10.000	ST	0000000000	0000000000
X-X	27	6.339-100.0	Rubber buffer	2.000	ST	0000000000	0000000000
	28	7.303-384.0	Sheet metal screw ST4,8X38,0-ST-A2S IS	4.000	ST	0000000000	0000000000
	29	5.321-273.0	Handhold	1.000	ST	0000000000	0000000000
X-X	30	6.339-014.0	Rubber buffer	4.000	ST	0000000000	0000000000
	31	5.042-456.0	Holder	1.000	ST	0000000000	0000000000
	32	4.022-045.0	U-Section complete	2.000	ST	0000000000	0000000000

**20 Pump set (0.106-528.0)**

---

Pos	Material #	Name	Qty.	Unit	from ser.nr.	up to ser.nr.
21	0.106-847.0	Excess-current	1.000	ST	0000000000	0000000000
22	0.106-526.0	Speed control	1.000	ST	0000000000	0000000000
23	0.106-527.0	Cylinder head	1.000	ST	0000000000	0000000000
24	0.106-468.0	Chemistry	1.000	ST	0000000000	0000000000
25	0.106-400.0	Piston	1.000	ST	0000000000	0000000000

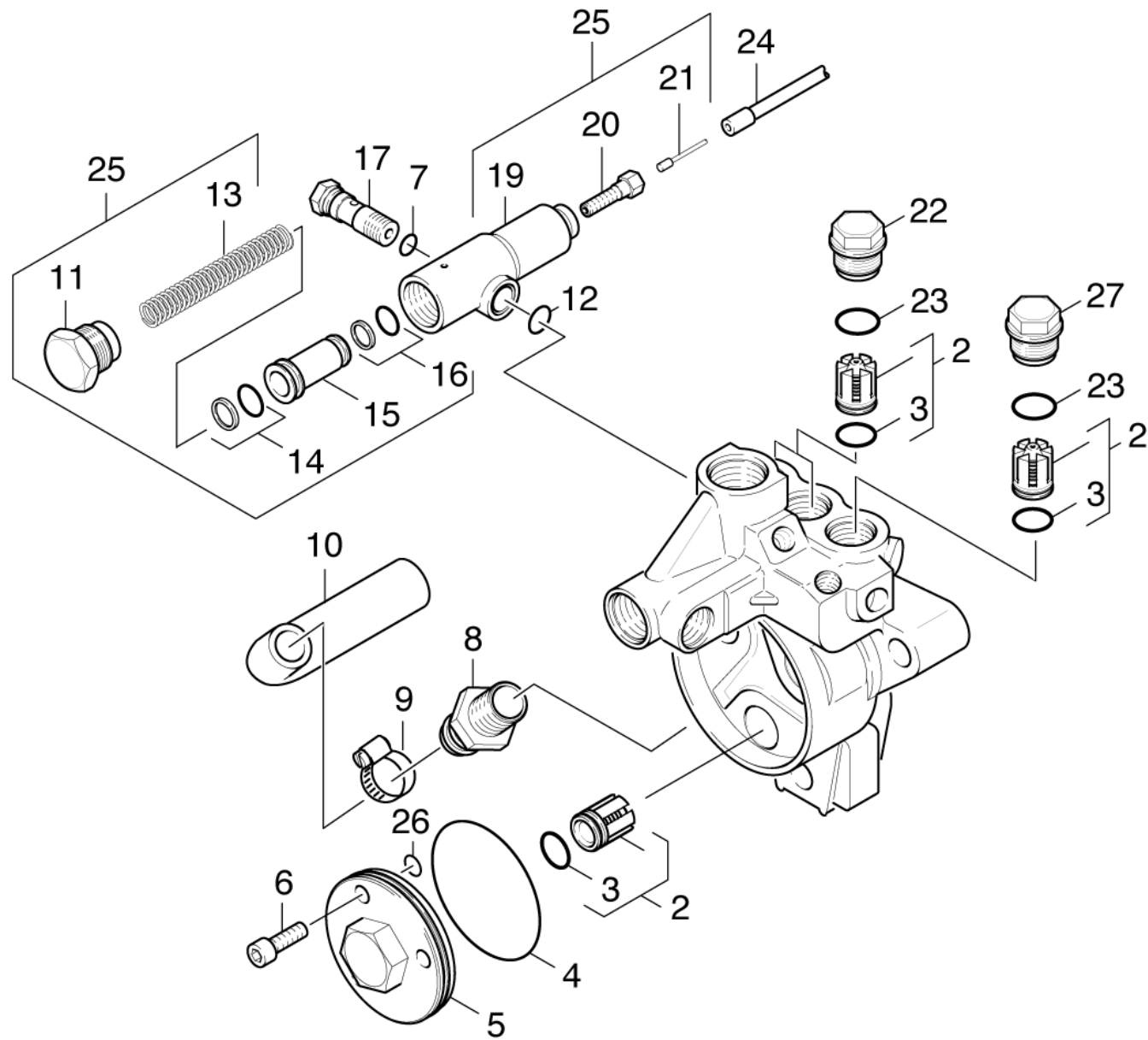
---



21 Excess-current (0.106-847.0)

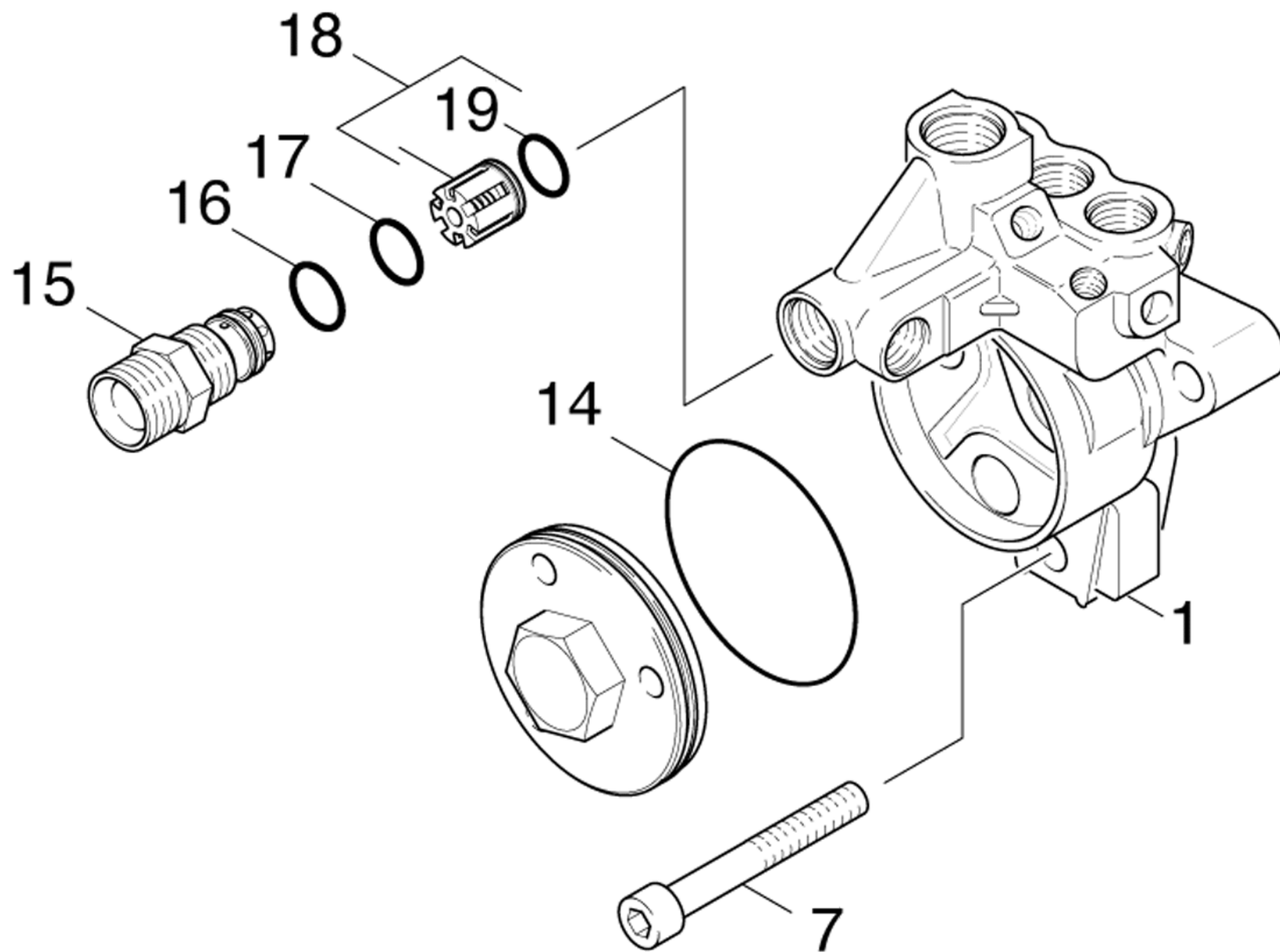
ET/VT (spare/wear parts)	Pos	Material #	Name	Qty.	Unit	from ser.nr.	up to ser.nr.
X-X	1	6.412-043.0	Spare part set C	1.000	ST	0000000000	0000000000
X-X	2	5.332-066.0	Helical spring	1.000	ST	0000000000	0000000000
	3	7.401-928.0	Sphere 8 G300 -1.4301 DIN 5401	1.000	ST	0000000000	0000000000
X-X	4	6.362-481.0	O-Ring seal 14,0 x 2,0 NBR 80	1.000	ST	0000000000	0000000000
X-X	5	5.581-160.0	Valve seat	1.000	ST	0000000000	0000000000
X-X	6	6.362-799.0	O-Ring seal 18,0 X 1,0	1.000	ST	0000000000	0000000000
X-X	7	6.362-079.0	O-Ring seal 18,0 X 2,5	1.000	ST	0000000000	0000000000
X-X	8	5.305-193.0	Shaped screw	1.000	ST	0000000000	0000000000
X-X	9	6.412-049.0	Excess-current -FA. SUTTNER	1.000	ST	0000000000	0000000000
X-X	10	6.421-157.0	Pressure gauge 0-400bar	1.000	ST	0000000000	0000000000
	11	7.382-301.0	Screw plug R 1/4"-St-A2E DIN 906	1.000	ST	0000000000	0000000000
	12	7.382-300.0	Screw plug M10x1-St-A2E DIN 906	1.000	ST	0000000000	0000000000
	13	7.311-439.0	Hexagon nut M 8x1,0-6-A2E ISO 10512	1.000	ST	0000000000	0000000000
X	14	6.412-045.0	Hand wheel cap	1.000	ST	0000000000	0000000000





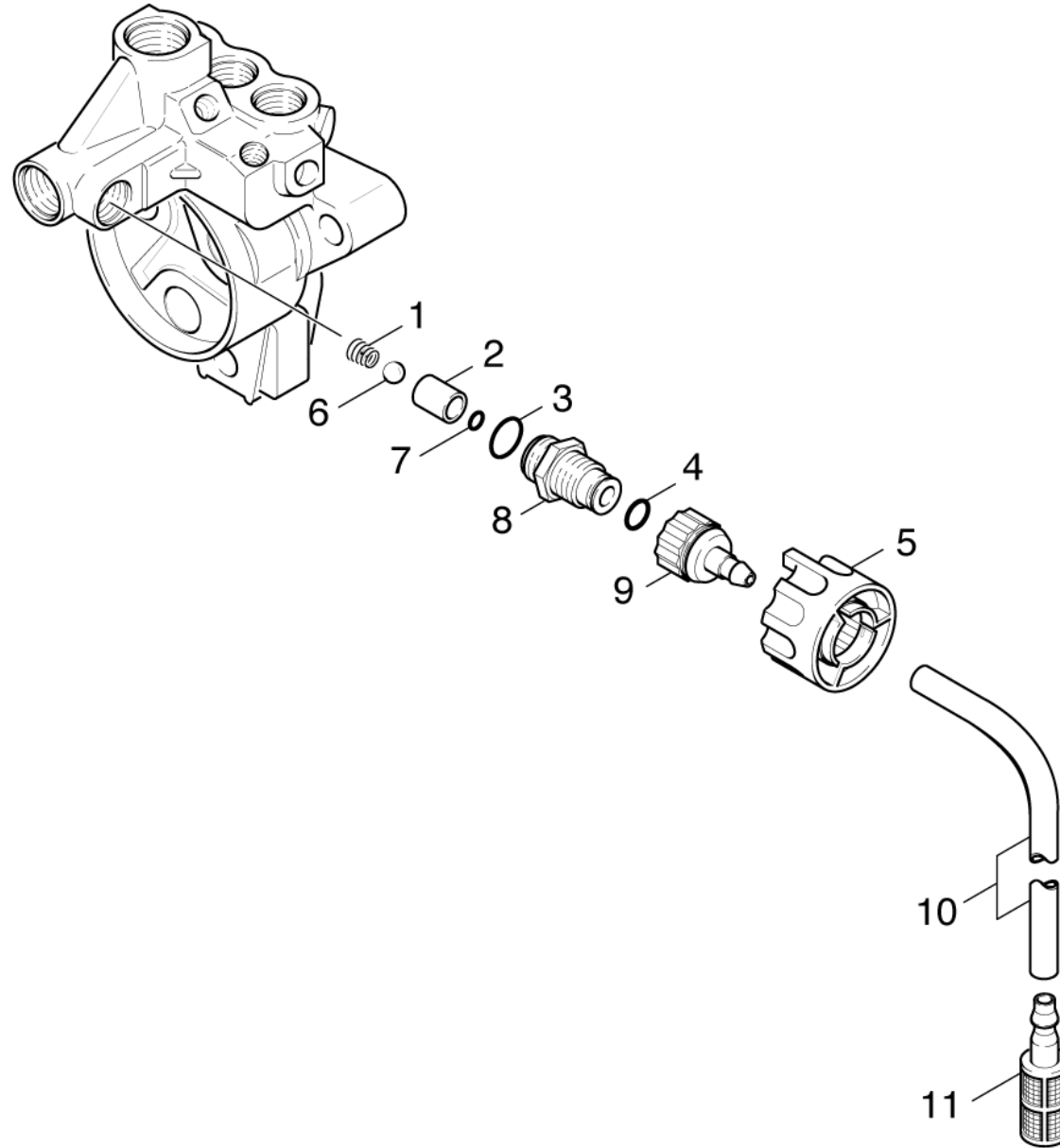
## 22 Speed control (0.106-526.0)

ET/VT (spare/wear parts)	Pos	Material #	Name	Qty.	Unit	from ser.nr.	up to ser.nr.
X-X	2	2.884-911.0	Valve (3 Stück)	1.000	ST	0000000000	0000000000
X-X	3	6.362-481.0	O-Ring seal 14,0 x 2,0 NBR 80	6.000	ST	0000000000	0000000000
X-X	4	6.362-501.0	O-Ring seal 68,0 X 2,0-NBR 70	1.000	ST	0000000000	0000000000
	5	5.063-466.0	Cover housing	1.000	ST	0000000000	0000000000
X-X	6	7.306-062.0	Cylinder head screw M10x25 -8.8-A3E DIN	3.000	ST	0000000000	0000000000
X-X	7	6.362-384.0	O-Ring seal 9x1,5 - NBR 70	4.000	ST	0000000000	0000000000
X-X	8	6.388-612.0	Hose stem R3/4"	1.000	ST	0000000000	0000000000
X-X	9	6.388-548.0	Hose clip	1.000	ST	0000000000	0000000000
X	10	5.442-747.0	Piece of tube	1.000	ST	0000000000	0000000000
	11	5.411-081.0	Screw plug	1.000	ST	0000000000	0000000000
X-X	12	6.362-527.0	O-Ring seal 12,0 X 1,5-NBR 70	1.000	ST	0000000000	0000000000
	13	5.332-232.0	Helical spring	1.000	ST	0000000000	0000000000
X-X	14	6.362-611.0	O-Ring seal complete	1.000	ST	0000000000	0000000000
	15	5.553-222.0	Piston	1.000	ST	0000000000	0000000000
X-X	16	6.362-575.0	O-Ring seal 12,42 KOMPL	1.000	ST	0000000000	0000000000
X-X	17	5.404-063.0	Hollow screw	1.000	ST	0000000000	0000000000
	19	5.060-335.0	Housing	1.000	ST	0000000000	0000000000
X	20	6.431-054.0	Adjusting screw	1.000	ST	0000000000	0000000000
X-X	21	6.431-089.0	Strand 635 mm	1.000	ST	0000000000	0000000000
X-X	22	5.583-090.0	Valve screw	3.000	ST	0000000000	0000000000
X-X	23	6.362-153.0	O-Ring seal 15,3 X 2,4-NBR 70	3.000	ST	0000000000	0000000000
X-X	24	6.431-065.0	Wire cage 435mm	1.000	ST	0000000000	0000000000
X-X	25	4.741-016.0	Speed control	1.000	ST	0000000000	0000000000
X-X	26	6.362-402.0	O-Ring seal 11,0 X 1,3-NBR 70	3.000	ST	0000000000	0000000000



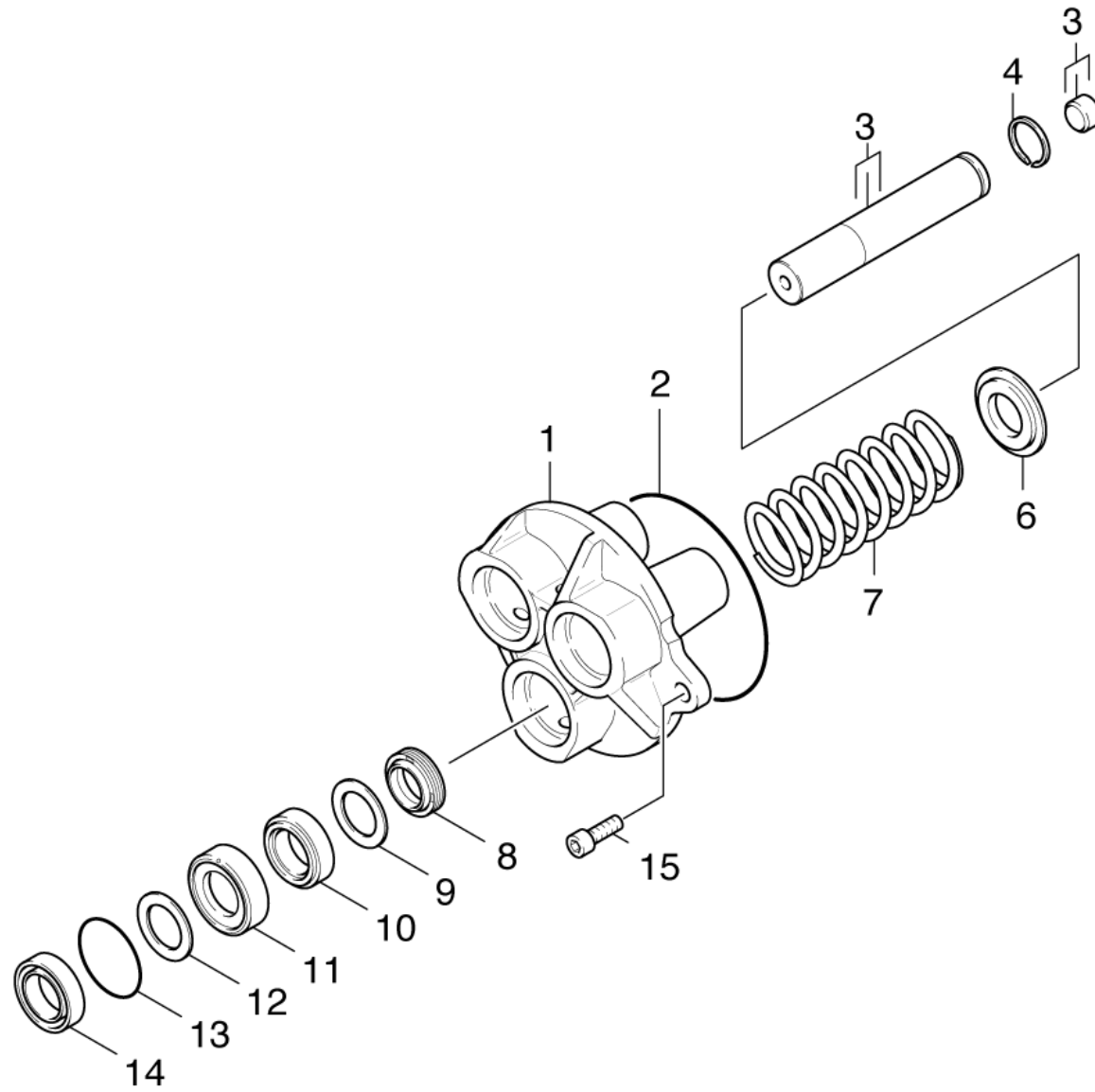
## 23 Cylinder head (0.106-527.0)

ET/VT (spare/wear parts)	Pos	Material #	Name	Qty.	Unit	from ser.nr.	up to ser.nr.
	1	5.550-179.0	Cylinder head	1.000	ST	0000000000	0000000000
X-X	7	7.306-122.0	Cylinder head screw M12x80- 8.8-A3E IS	3.000	ST	0000000000	0000000000
X-X	14	6.362-501.0	O-Ring seal 68,0 X 2,0-NBR 70	1.000	ST	0000000000	0000000000
	15	5.769-114.0	Nozzle insert only for replacement D2,2	1.000	ST	0000000000	0000000000
X-X	16	6.362-153.0	O-Ring seal 15,3 X 2,4-NBR 70	1.000	ST	0000000000	0000000000
X-X	17	6.362-481.0	O-Ring seal 14,0 x 2,0 NBR 80	1.000	ST	0000000000	0000000000
X-X	18	4.580-219.0	Valve complete	1.000	ST	0000000000	0000000000
X-X	19	6.362-381.0	O-Ring seal 13x2 - NBR 70	1.000	ST	0000000000	0000000000



24 Chemistry (0.106-468.0)

ET/VT (spare/wear parts)	Pos	Material #	Name	Qty.	Unit	from ser.nr.	up to ser.nr.	Footnote text
X-X	1	5.332-124.0	Helical spring	1.000	ST	0000000000	0000000000	
X	2	5.026-764.0	Tube	1.000	ST	0000000000	0000000000	
X-X	3	6.362-533.0	O-Ring seal 14,0 X 1,5-NBR 70	1.000	ST	0000000000	0000000000	
X-X	4	6.362-151.0	O-Ring d. 10 x 2 NBR 70	1.000	ST	0000000000	0000000000	
X-X	5	5.321-199.0	Handhold	1.000	ST	0000000000	0000000000	
	6	7.401-908.0	Sphere 7 G300 -1.4301 DIN 5401	1.000	ST	0000000000	0000000000	
X-X	7	6.362-383.0	O-Ring seal 6,0 X 2,0	1.000	ST	0000000000	0000000000	
X-X	8	5.402-362.0	Screw union	1.000	ST	0000000000	0000000000	
X-X	9	5.443-281.0	Hose stem	1.000	ST	0000000000	0000000000	
	10	6.388-216.0	Hose DN 5	1.000	M	0000000000	0000000000	TO ORDER AS CUT GOODS
X	11	5.731-652.0	Filter with weight	1.000	ST	0000000000	0000000000	



**25 Piston (0.106-400.0)**

ET/VT (spare/wear parts)	Pos	Material #	Name	Qty.	Unit	from ser.nr.	up to ser.nr.
X-X	1	5.060-261.0	Housing	1.000	ST	0000000000	0000000000
X-X	2	6.362-448.0	O-Ring seal 100,0 X 1,78	1.000	ST	0000000000	0000000000
X-X	3	4.553-105.0	Piston	3.000	ST	0000000000	0000000000
X-X	4	6.472-331.0	Snap ring 20	3.000	ST	0000000000	0000000000
X-X	6	5.115-289.0	Washer	3.000	ST	0000000000	0000000000
X-X	7	5.332-150.0	Helical spring	3.000	ST	0000000000	0000000000
X-X	8	6.365-052.0	Grooved ring 20X28X6/8	3.000	ST	0000000000	0000000000
X-X	9	5.115-255.0	Washer	3.000	ST	0000000000	0000000000
X-X	10	6.365-053.0	Compact seal 20X30X6	3.000	ST	0000000000	0000000000
X-X	11	5.112-181.0	Bush	3.000	ST	0000000000	0000000000
X-X	12	5.115-224.0	Washer	3.000	ST	0000000000	0000000000
X-X	13	6.362-484.0	O-Ring seal 34,65X 1,78	3.000	ST	0000000000	0000000000
X-X	14	6.365-330.0	Grooved ring	3.000	ST	0000000000	0000000000
X	15	7.306-042.0	Cylinder head screw M8x25 -8.8-A2E ISO4	2.000	ST	0000000000	0000000000
X-X	100	2.883-285.0	PUMPSET	1.000	ST	0000000000	0000000000



**100 PUMPSET (2.883-285.0)**

ET/VT (spare/wear parts)	Pos	Material #	Name	Qty.	Unit
X	10	4.580-175.0	Valve complete	6.000	ST
X-X	20	4.580-219.0	Valve complete	1.000	ST
X-X	30	5.115-224.0	Washer	3.000	ST
X	40	5.332-004.0	Helical spring	1.000	ST
X-X	50	5.332-066.0	Helical spring	1.000	ST
X-X	60	5.332-124.0	Helical spring	1.000	ST
X-X	70	5.581-128.0	Valve seat	1.000	ST
X-X	80	5.581-160.0	Valve seat	1.000	ST
X	90	5.582-003.0	Valve disc	1.000	ST
X-X	100	5.587-185.0	Valve housing	1.000	ST
	110	5.769-115.0	Nozzle insert D2,4	1.000	ST
X-X	120	6.362-079.0	O-Ring seal 18,0 X 2,5	1.000	ST
X-X	130	6.362-151.0	O-Ring d. 10 x 2 NBR 70	1.000	ST
X-X	140	6.362-153.0	O-Ring seal 15,3 X 2,4-NBR 70	1.000	ST
X-X	150	6.362-383.0	O-Ring seal 6,0 X 2,0	1.000	ST
X-X	160	6.362-384.0	O-Ring seal 9x1,5 - NBR 70	3.000	ST
X-X	170	6.362-402.0	O-Ring seal 11,0 X 1,3-NBR 70	3.000	ST
X-X	180	6.362-448.0	O-Ring seal 100,0 X 1,78	1.000	ST
X-X	190	6.362-481.0	O-Ring seal 14,0 x 2,0 NBR 80	2.000	ST
X-X	200	6.362-484.0	O-Ring seal 34,65X 1,78	3.000	ST
X-X	210	6.362-501.0	O-Ring seal 68,0 X 2,0-NBR 70	1.000	ST
X-X	220	6.362-524.0	O-Ring seal 17,0 X 1,5	1.000	ST
X-X	230	6.362-527.0	O-Ring seal 12,0 X 1,5-NBR 70	1.000	ST
X-X	240	6.362-533.0	O-Ring seal 14,0 X 1,5-NBR 70	1.000	ST
X-X	250	6.362-799.0	O-Ring seal 18,0 X 1,0	1.000	ST

**100 PUMPSET (2.883-285.0)**

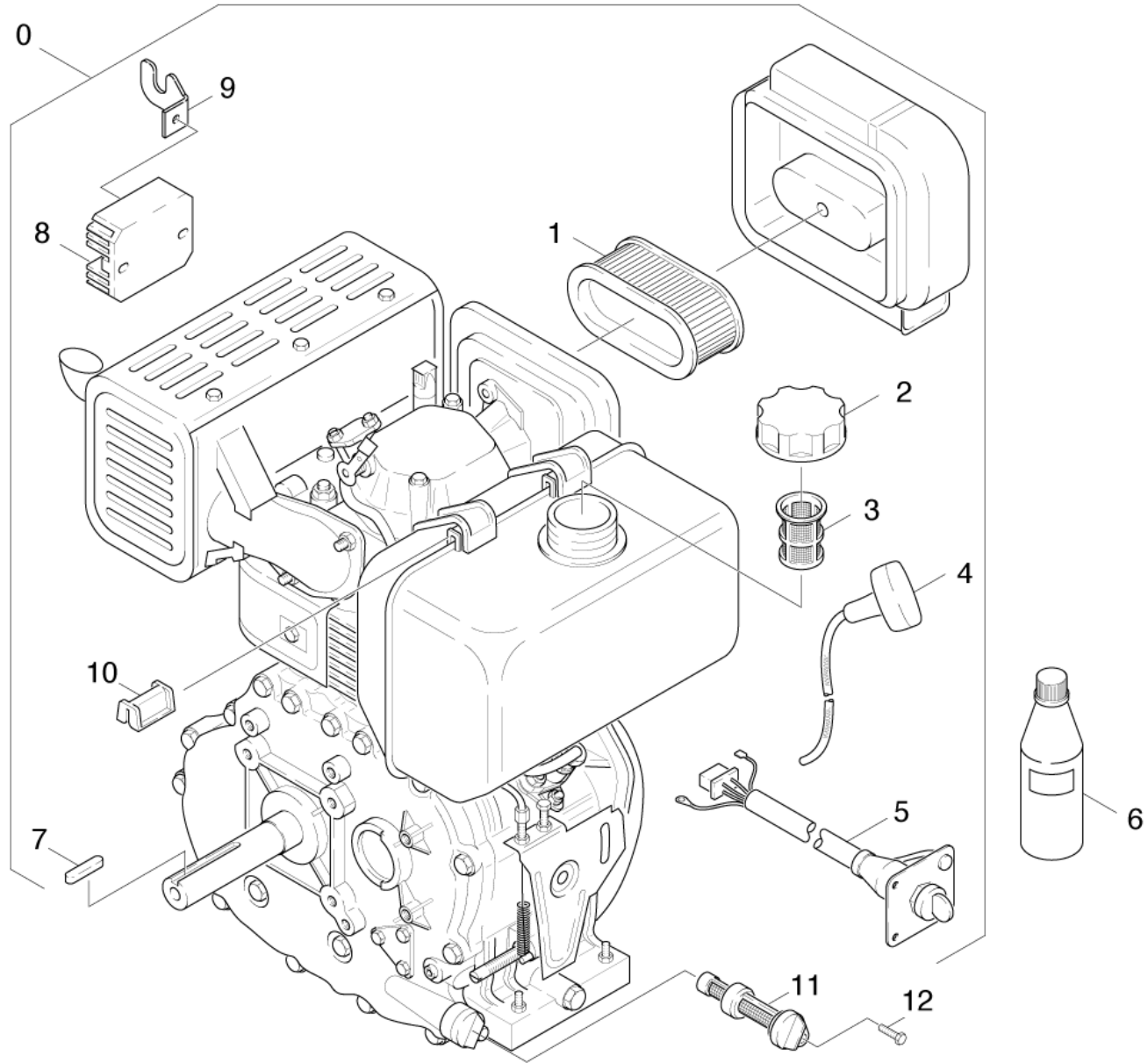
ET/VT (spare/wear parts)	Pos	Material #	Name	Qty.	Unit
X-X	260	6.365-052.0	Grooved ring 20X28X6/8	3.000	ST
X-X	270	6.365-053.0	Compact seal 20X30X6	3.000	ST
X-X	280	6.365-330.0	Grooved ring	3.000	ST
X-X	290	6.412-043.0	Spare part set C	1.000	ST
	300	7.401-908.0	Sphere 7 G300 -1.4301 DIN 5401	1.000	ST
	310	7.401-928.0	Sphere 8 G300 -1.4301 DIN 5401	1.000	ST

**30 Motor (0.111-533.0)**

---

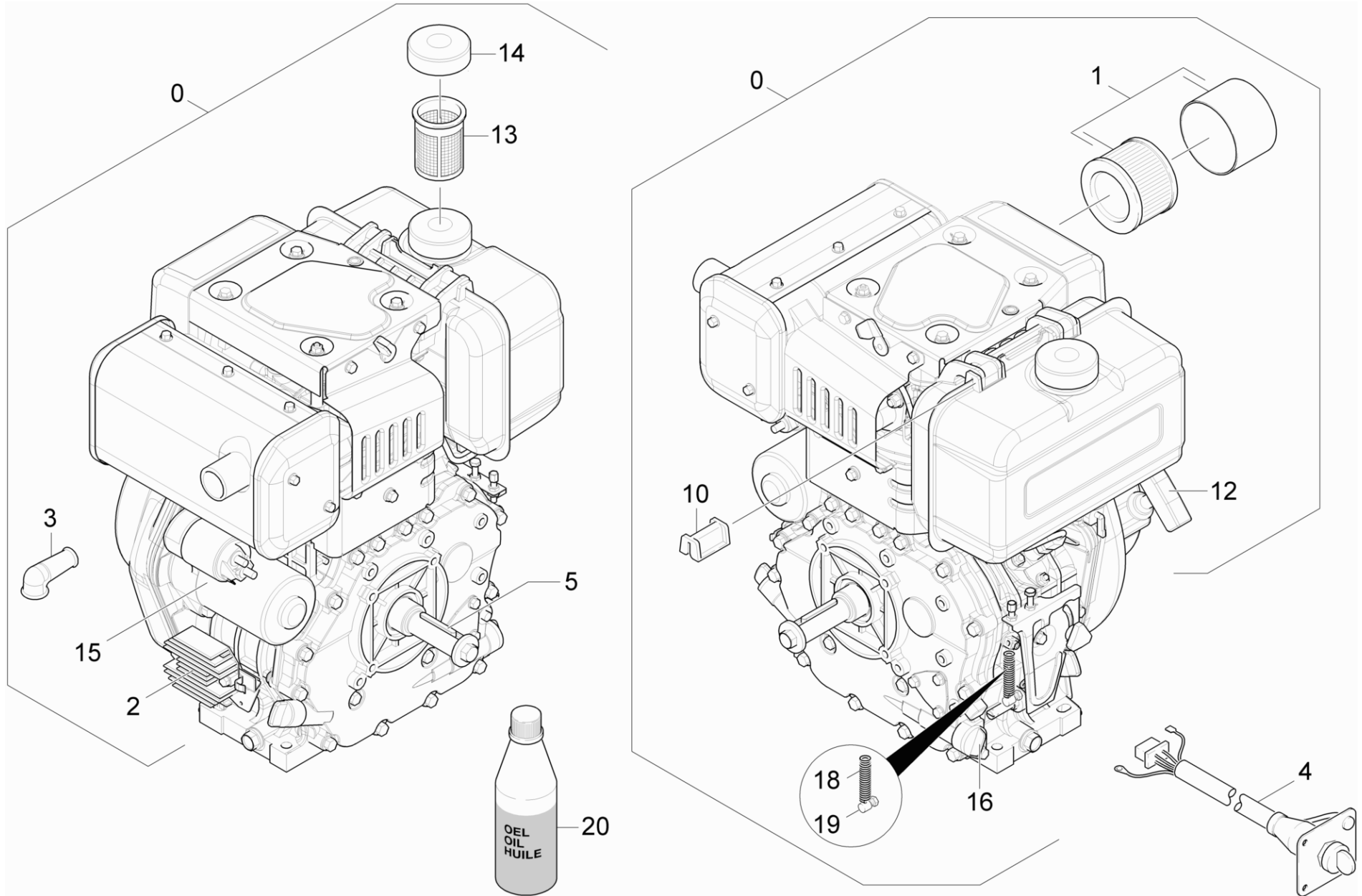
Pos	Material #	Name	Qty.	Unit	from ser.nr.	up to ser.nr.	Footnote text
31	0.111-534.0	Motor	1.000	ST	0000000000	0000000000	VERSION 1
32	0.113-836.0	Motor	1.000	ST			VERSION 2
33	0.111-559.0	Transmission	1.000	ST	0000000000	0000000000	

---



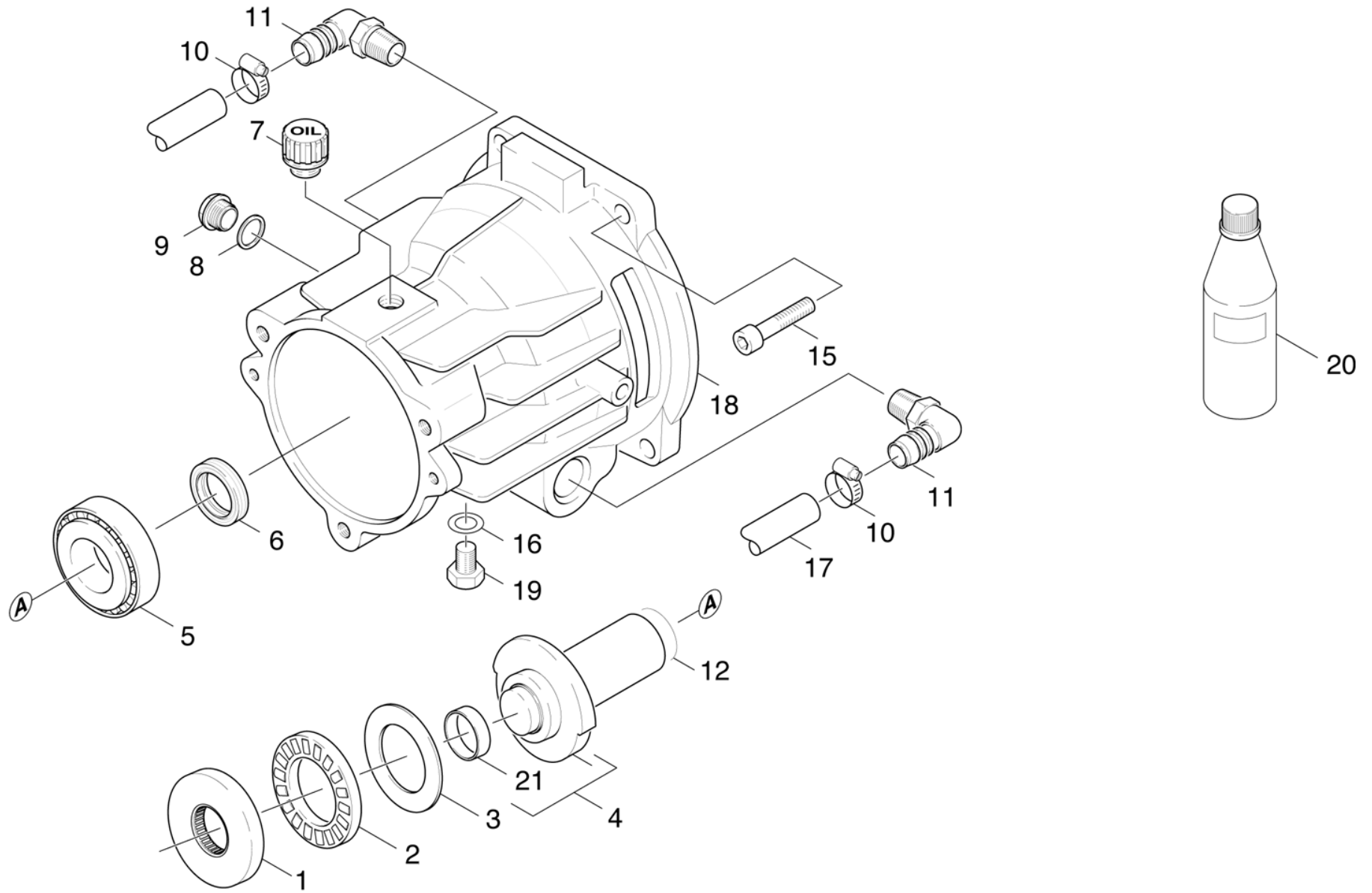
**31 Motor (0.111-534.0)**

ET/VT (spare/wear parts)	Pos	Material #	Name	Qty.	Unit	from ser.nr.	up to ser.nr.	Footnote text
	0	6.491-271.0	Diesel engine 10HP	1.000	ST	0000000000	0000000000	
X-X	1	6.491-263.0	Air filter	1.000	ST	0000000000	0000000000	
	2	6.491-261.0	Cap of a tank complete	1.000	ST	0000000000	0000000000	
X-X	3	6.491-262.0	Fuel filter	1.000	ST	0000000000	0000000000	
	4	6.491-265.0	Pull cord complete	1.000	ST	0000000000	0000000000	
X-X	5	6.491-274.0	Switch start-up	1.000	ST	0000000000	0000000000	
X-X	6	6.288-050.0	Engine oil 1L	2.000	ST	0000000000	0000000000	MOTOR 1,6 L
	7	6.491-224.0	Parallel key 7X7X33	1.000	ST	0000000000	0000000000	
	8	6.491-275.0	Control device	1.000	ST	0000000000	0000000000	
	9	5.042-607.0	Holder	1.000	ST	0000000000	0000000000	
X-X	10	6.491-709.0	Holder rubber	2.000	ST	0000000000	0000000000	
X-X	11	6.491-471.0	Oil filter	1.000	ST	0000000000	0000000000	
X-X	12	7.306-118.0	Screw M 6x35 -8.8-R3R (In6Rd)	1.000	ST	0000000000	0000000000	



**32 Motor (0.113-836.0)**

ET/VT (spare/wear parts)	Pos	Material #	Name	Qty.	Unit
	0	6.491-970.0	Diesel engine 10HP	1.000	ST
X-X	1	6.491-958.0	Air filter insert	1.000	ST
	2	6.491-991.0	Control device	1.000	ST
	3	6.618-019.0	Protecting cap	1.000	ST
	4	6.491-997.0	Switch start-up	1.000	ST
	5	6.491-998.0	Parallel key 6.3x50	1.000	ST
X-X	10	6.491-709.0	Holder rubber	2.000	ST
	12	6.491-993.0	Starter rope complete	1.000	ST
X	13	6.491-994.0	Fuel filter	1.000	ST
	14	6.491-261.0	Cap of a tank complete	1.000	ST
	15	6.491-273.0	Starter	1.000	ST
X-X	16	6.491-471.0	Oil filter	1.000	ST
X-X	18	5.332-264.0	Helical spring	1.000	ST
	19	6.431-114.0	Clamping bolt	1.000	ST
X-X	20	6.288-050.0	Engine oil 1L	1.000	ST





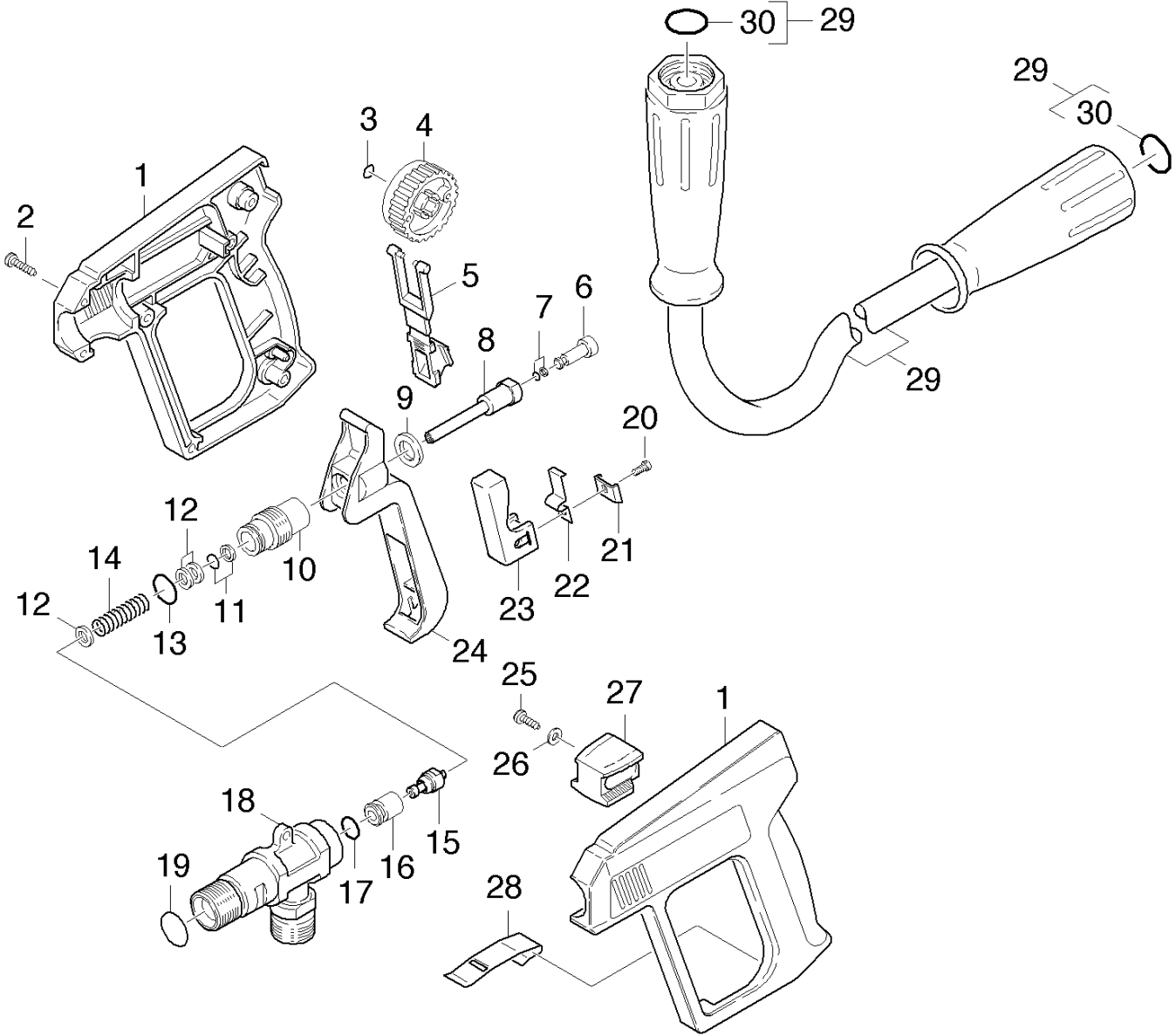
### 33 Transmission (0.111-559.0)

ET/VT (spare/wear parts)	Pos	Material #	Name	Qty.	Unit	from ser.nr.	up to ser.nr.	Footnote text
X	1	6.401-124.0	Thrust washer with cage	1.000	ST	0000000000	0000000000	
	2	6.401-123.0	Axial roller cage	1.000	ST	0000000000	0000000000	
	3	6.401-122.0	Rotor disc	1.000	ST	0000000000	0000000000	
	4	4.120-146.0	Wobble plate	1.000	ST	0000000000	0000000000	
X-X	5	6.401-225.0	Taper roller bearing 41	1.000	ST	0000000000	0000000000	
X-X	6	7.367-011.0	Radial shaft seal ring A40x52x7-NBR DIN	1.000	ST	0000000000	0000000000	
	7	6.472-383.0	Breather cap	1.000	ST	0000000000	0000000000	
X-X	8	6.362-585.0	Seal	1.000	ST	0000000000	0000000000	
X-X	9	5.411-062.0	Screw plug	1.000	ST	0000000000	0000000000	
X-X	10	6.388-548.0	Hose clip	2.000	ST	0000000000	0000000000	
X-X	11	6.388-716.0	Angle bushing R 3/4"	2.000	ST	0000000000	0000000000	
X	12	6.362-612.0	O-Ring seal 24,77x5,33-NBR 70	1.000	ST	0000000000	0000000000	
X-X	15	7.304-650.0	Hexagonal head screw M 8x25-8.8-A2E EN	4.000	ST	0000000000	0000000000	
X-X	16	7.362-005.0	Joint ring A14x18 -Cu DIN 7603	1.000	ST	0000000000	0000000000	
X-X	17	6.388-162.0	Hose DN19 x 4,5	1.000	M	0000000000	0000000000	
	18	5.060-419.0	Housing	1.000	ST	0000000000	0000000000	
	19	7.382-233.0	Screw plug M14x1,5-A-CuZn DIN 7604	1.000	ST	0000000000	0000000000	
X-X	20	6.288-050.0	Engine oil 1L	1.000	ST	0000000000	0000000000	PUMP 0,35 L
	21	6.401-121.0	Ring inside	1.000	ST	0000000000	0000000000	

**40 Accessories (0.146-205.0)**

---

Pos	Material #	Name	Qty.	Unit	from ser.nr.	up to ser.nr.	var. information
41	0.146-587.0	Hand trigger gun	1.000	ST	0000000000	0000000000	
42	0.146-383.0	Jet pipe	1.000	ST	0000000000	0000000000	VERSION 1
43	0.148-571.0	Jet pipe	1.000	ST	0000000000	0000000000	VERSION 2
44	0.147-872.0	Nozzle	1.000	ST	0000000000	0000000000	



41 Hand trigger gun (0.146-587.0)

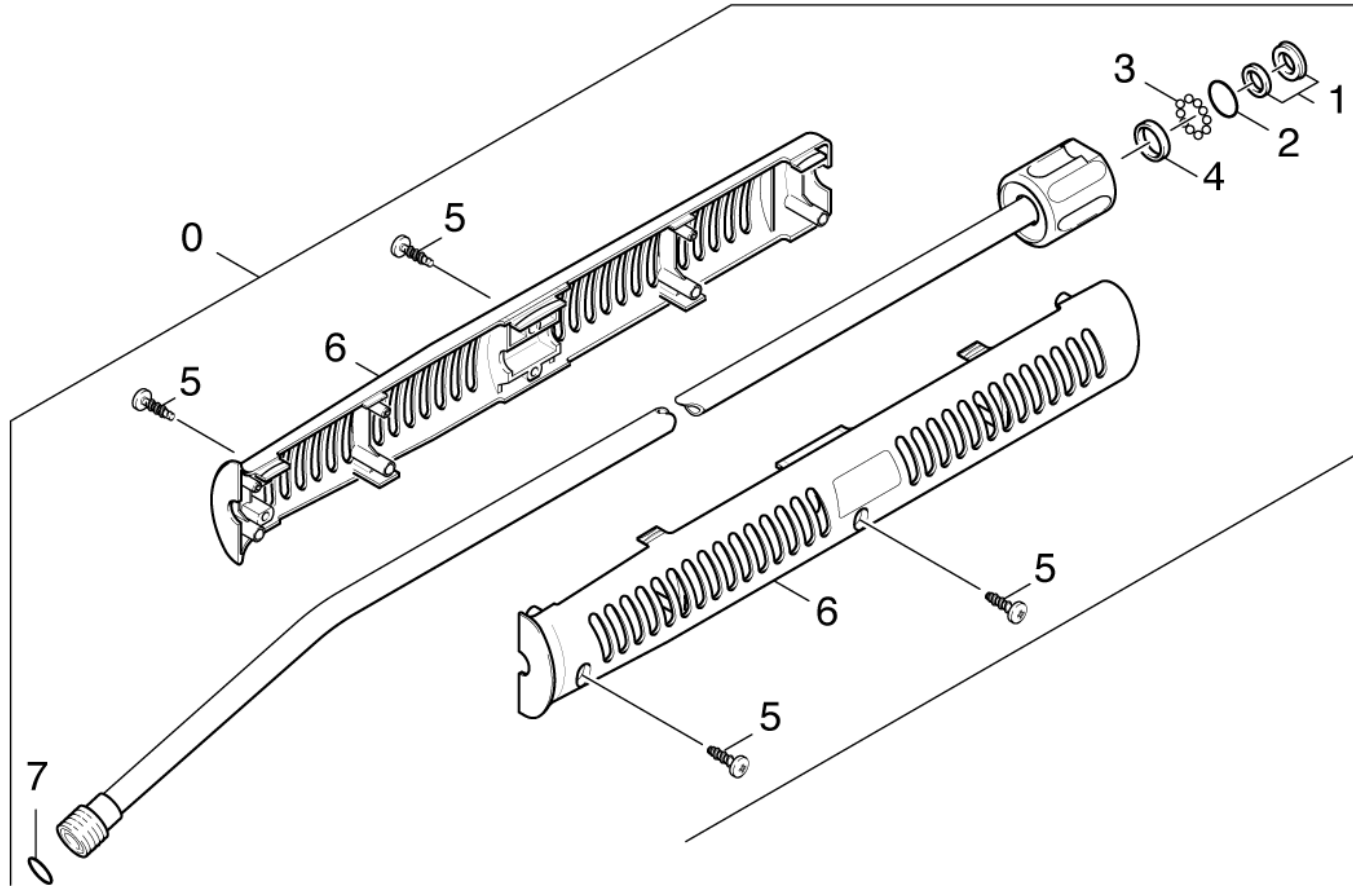
ET/VT (spare/wear parts)	Pos	Material #	Name	Qty.	Unit	from ser.nr.	up to ser.nr.
	1	5.321-107.0	Handhold few	1.000	ST	0000000000	0000000000
	2	7.303-096.0	Screw 4x22 -ST-10.9-R2R (IN6RD)	8.000	ST	0000000000	0000000000
X-X	3	6.362-176.0	O-Ring seal 6,07x1,78	1.000	ST	0000000000	0000000000
	4	5.322-006.0	Hand wheel	1.000	ST	0000000000	0000000000
	5	5.030-283.0	Moulded part	1.000	ST	0000000000	0000000000
	6	5.553-118.0	Piston	1.000	ST	0000000000	0000000000
X-X	7	6.362-477.0	O-Ring seal complete 1ST.-R.	1.000	ST	0000000000	0000000000
	8	5.107-062.0	Bar	1.000	ST	0000000000	0000000000
	9	5.115-227.0	Washer	1.000	ST	0000000000	0000000000
	10	5.305-110.0	Shaped screw	1.000	ST	0000000000	0000000000
X-X	11	6.362-468.0	O-Ring seal complete 1ST.-R.	1.000	ST	0000000000	0000000000
	12	5.115-260.0	Washer	3.000	ST	0000000000	0000000000
	13	6.362-478.0	O-Ring seal 12,42X 1,78	1.000	ST	0000000000	0000000000
	14	5.332-140.0	Helical spring	1.000	ST	0000000000	0000000000
	15	4.581-013.0	Valve seat	1.000	ST	0000000000	0000000000
	16	5.110-240.0	Sleeve 800L/H	1.000	ST	0000000000	0000000000
	17	6.362-479.0	O-Ring seal 7,59X 2,62	1.000	ST	0000000000	0000000000
	18	5.427-079.0	Manifold	1.000	ST	0000000000	0000000000
	19	6.362-496.0	O-Ring seal 17,12X 2,62-NBR 70	1.000	ST	0000000000	0000000000
	20	6.303-058.0	Oval head screw 2,9X 13-ST-VERZ	1.000	ST	0000000000	0000000000
	21	5.040-480.0	Sheet metal component	1.000	ST	0000000000	0000000000
	22	5.335-013.0	Spiral spring	1.000	ST	0000000000	0000000000
	23	5.325-010.0	Lever	1.000	ST	0000000000	0000000000
	24	5.325-009.0	Lever	1.000	ST	0000000000	0000000000
	25	6.303-025.0	Oval head screw 4,2x16-St-vz	1.000	ST	0000000000	0000000000

**41 Hand trigger gun (0.146-587.0)**

ET/VT (spare/wear parts)	Pos	Material #	Name	Qty.	Unit	from ser.nr.	up to ser.nr.
	26	7.312-001.0	Washer 4 -200HV-A3E ISO 7089	1.000	ST	0000000000	0000000000
	27	5.030-321.0	Moulded part	1.000	ST	0000000000	0000000000
	28	5.040-479.0	Sheet metal component	1.000	ST	0000000000	0000000000
	29	7.777-999.0	Stockpiling discontinued	1.000	ST	0000000000	0000000000
X-X	30	6.362-524.0	O-Ring seal 17,0 X 1,5	1.000	ST	0000000000	0000000000
	100	2.880-369.0	Spare part set 4.775-041	1.000	ST	0000000000	0000000000

**100 Spare part set 4.775-041 (2.880-369.0)**

ET/VT (spare/wear parts)	Pos	Material #	Name	Qty.	Unit
	10	4.581-013.0	Valve seat	1.000	ST
	20	5.110-240.0	Sleeve 800L/H	1.000	ST
	30	5.332-140.0	Helical spring	1.000	ST
	40	6.303-024.0	Oval head screw 4,2x22-ST-VERZ	8.000	ST
X-X	50	6.362-176.0	O-Ring seal 6,07x1,78	1.000	ST
X-X	60	6.362-468.0	O-Ring seal complete 1ST.-R.	1.000	ST
X-X	70	6.362-477.0	O-Ring seal complete 1ST.-R.	1.000	ST
	80	6.362-478.0	O-Ring seal 12,42X 1,78	1.000	ST
	90	6.362-479.0	O-Ring seal 7,59X 2,62	1.000	ST
	100	6.362-496.0	O-Ring seal 17,12X 2,62-NBR 70	1.000	ST



**42 Jet pipe (0.146-383.0)**

ET/VT (spare/wear parts)	Pos	Material #	Name	Qty.	Unit	from ser.nr.	up to ser.nr.
X-X	0	4.760-660.0	Jet pipe packaged only for replacement	1.000	ST	0000000000	0000000000
X-X	1	4.363-692.0	Grooved ring kpl. -nur fuer Ersatz-	1.000	ST	0000000000	0000000000
X-X	2	6.362-524.0	O-Ring seal 17,0 X 1,5	1.000	ST	0000000000	0000000000
X-X	3	7.401-921.0	Sphere 4 G20 -1.4034 DIN 5401	12.000	ST	0000000000	0000000000
X	4	6.362-529.0	Joint ring 12x1,5	1.000	ST	0000000000	0000000000
	5	6.303-025.0	Oval head screw 4,2x16-St-vz	2.000	ST	0000000000	0000000000
	6	5.321-150.0	HANDLE (PART NO=ONE HALF)	2.000	ST	0000000000	0000000000
X-X	7	2.880-296.0	Spare part set O-Ring seal 5x	1.000	ST	0000000000	0000000000

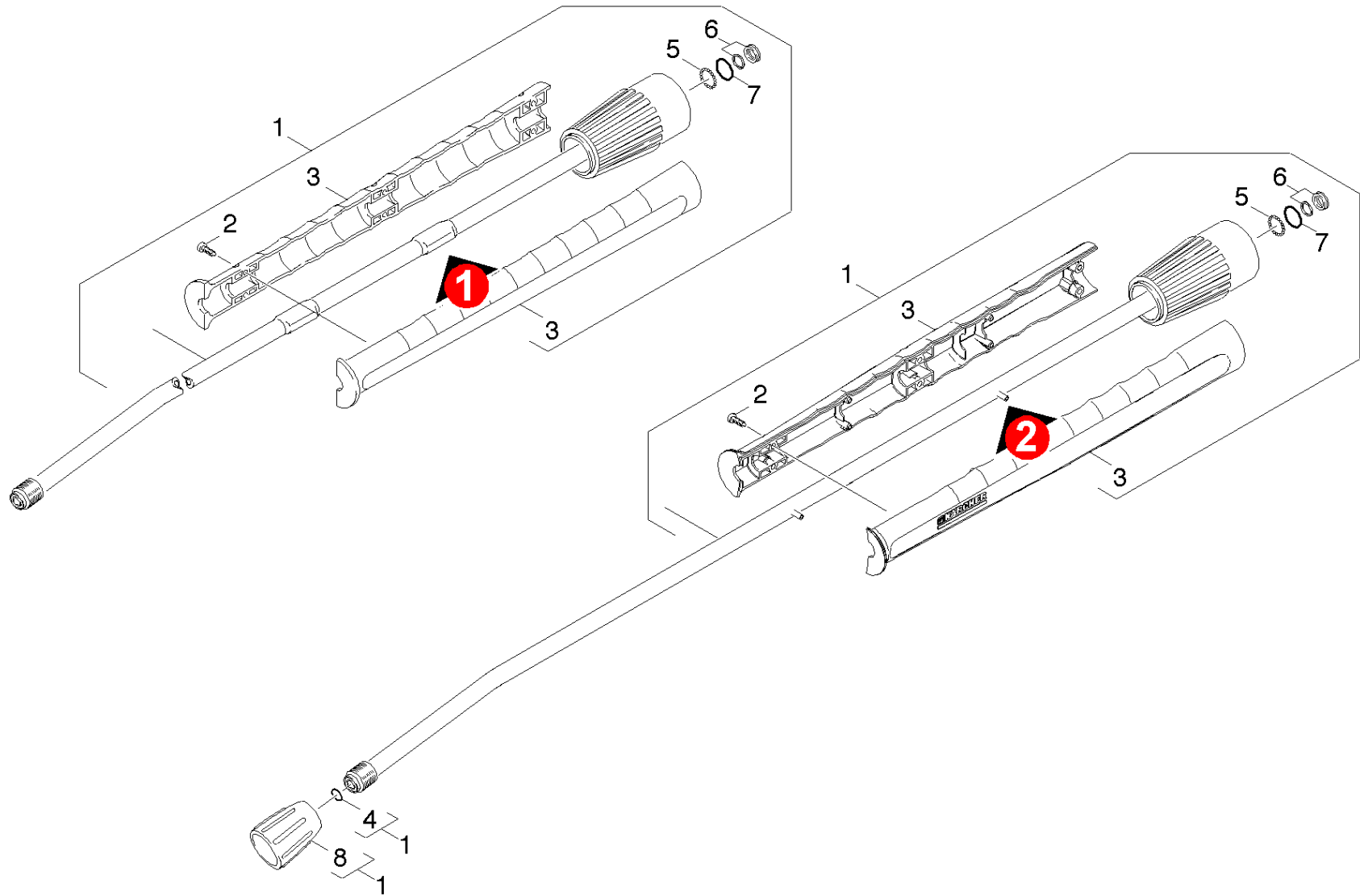


7 Spare part set O-Ring seal 5x (2.880-296.0)

---

Pos	Material #	Name	Qty.	Unit
10	6.362-957.0	O-Ring seal 10,0 X 2,0-EPDM 85-90	5.000	ST

---



**43 Jet pipe (0.148-571.0)**

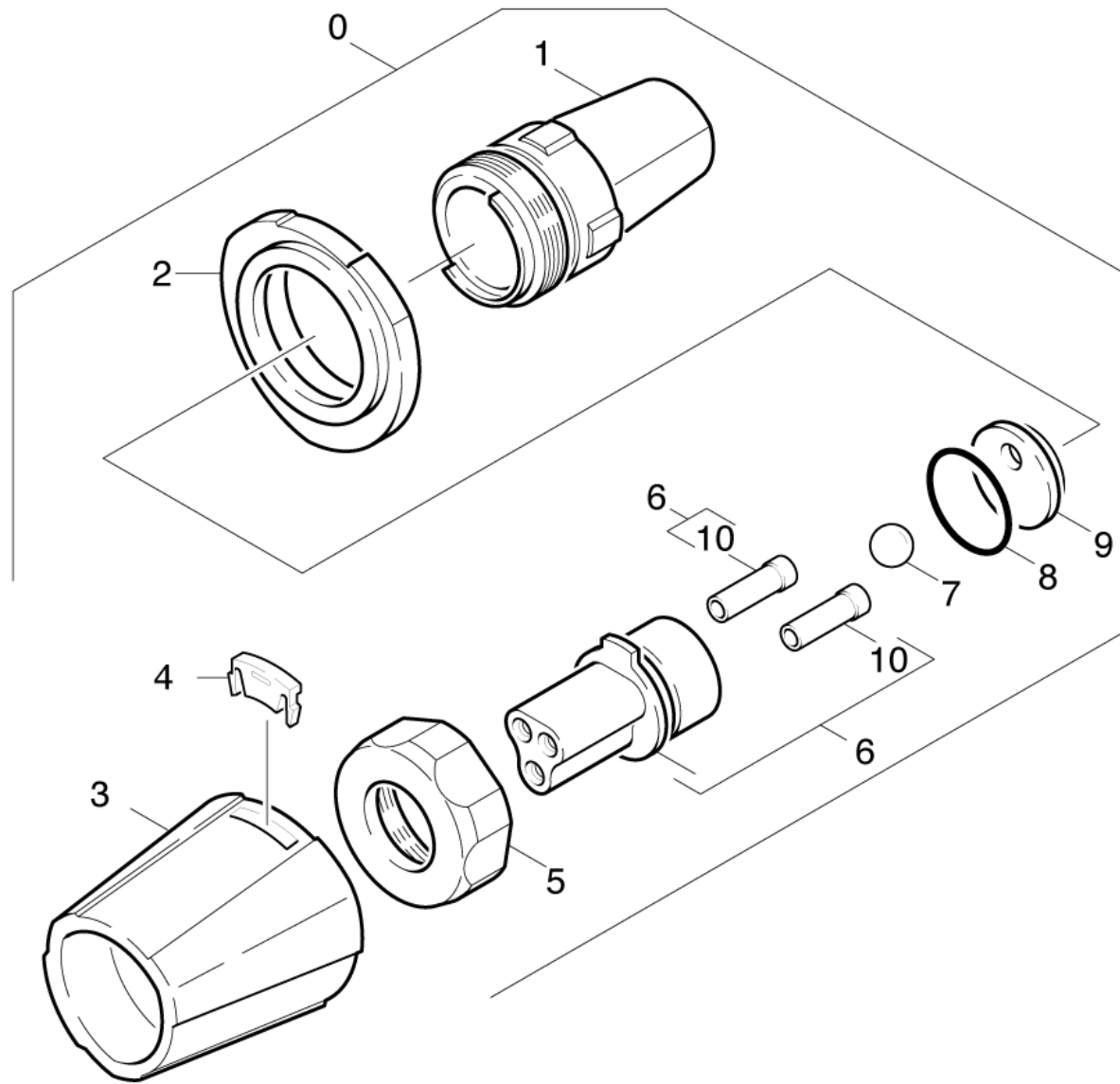
ET/VT (spare/wear parts)	Pos	Material #	Name	Qty.	Unit	from ser.nr.	up to ser.nr.	var. information
X-X	1	4.760-660.0	Jet pipe packaged only for replacement	1.000	ST	0000000000	0000000000	
Position text: 1.286-105.0 /-108.0 /-109.0 /-112.0/-113.0								
X-X	2	7.303-129.0	Screw 4x16 -10.9-R2R (K-In6Rd)	6.000	ST	0000000000	0000000000	
	3	5.321-855.0	Handhold few jet pipe with welding bolt	1.000	ST			VERSION 2
	3	5.321-691.0	Handhold few jet pipe	1.000	ST	0000000000	0000000000	VERSION 1
X-X	4	2.880-296.0	Spare part set O-Ring seal 5x	1.000	ST	0000000000	0000000000	
X-X	5	7.401-915.0	Sphere 2,5 G20 -1.4034 DIN 5401	20.000	ST	0000000000	0000000000	
X-X	6	4.363-692.0	Grooved ring kpl. -nur fuer Ersatz-	1.000	ST	0000000000	0000000000	
X-X	7	6.362-524.0	O-Ring seal 17,0 X 1,5	1.000	ST	0000000000	0000000000	
X-X	8	5.401-129.0	Screw connector part	1.000	ST	0000000000	0000000000	

**4 Spare part set O-Ring seal 5x (2.880-296.0)**

---

Pos	Material #	Name	Qty.	Unit
10	6.362-957.0	O-Ring seal 10,0 X 2,0-EPDM 85-90	5.000	ST

---



**44 Nozzle (0.147-872.0)**

ET/VT (spare/wear parts)	Pos	Material #	Name	Qty.	Unit	from ser.nr.	up to ser.nr.
X-X	0	4.767-002.0	Triple jet nozzle 045	1.000	ST	0000000000	0000000000
Position text: / 1.810-994.0							
	1	4.060-395.0	Housing complete only for replacement	1.000	ST	0000000000	0000000000
	2	5.394-401.0	Protection part	1.000	ST	0000000000	0000000000
	3	5.394-402.0	Protection part	1.000	ST	0000000000	0000000000
X-X	4	5.031-709.0	Moulded part	1.000	ST	0000000000	0000000000
	5	5.311-192.0	Union nut	1.000	ST	0000000000	0000000000
	6	4.764-139.0	Nozzle holder only for replacement 045	1.000	ST	0000000000	0000000000
	7	7.401-917.0	Sphere 10,0 G100-1.4301 DIN 5401	1.000	ST	0000000000	0000000000
	8	6.362-831.0	O-Ring d. 22x2 NBR 90	1.000	ST	0000000000	0000000000
	9	5.031-370.0	Moulded part	1.000	ST	0000000000	0000000000
	10	5.031-597.0	Rectifier	2.000	ST	0000000000	0000000000