

Spare parts list
(5.952-936.0) Spare parts list HDS 890 C

DE HINWEISE

Weitere Sprachen:

Diese Ersatzteilliste ist in weiteren Sprachen erhältlich. Sie erhalten diese unter www.kaercher.com im Bereich Service.
Die Schreibweise der Teilenummer, z.B. 75456380, entspricht der Teilenummer 7.545-638.0.

Mengenangaben:

Die Mengenangaben in der Ersatzteilliste entsprechen den in der Baugruppe verbauten Stückzahlen der Bauteile.

Meterware:

Ersatzteile welche als Meterware geliefert werden sind auf Einbaulänge selbst zu kürzen. Die Stückzahlen sind als Mindestbestellmenge =1m angegeben und müssen je nach Bedarf auf weitere volle Meterzahlen erhöht werden.

Versionen/ Werknummern:

Sind Versionen oder Werknummern in der Ersatzteilliste angegeben, ist anhand dieser vor Bestellung zu prüfen, welches Bauteil für ihr Gerät verwendet werden muss.

Lackierte Teile:

Bei Bestellungen von lackierten Teilen welche in der Ersatzteilliste nicht in verschiedenen Farben ausgewiesen sind, ist zusätzlich die Farbnummer oder Farbe mit anzugeben.

Technische Änderungen:

Technische Änderungen sowie das Recht der ausschließlichen Auswertung unseres geistigen Eigentums behalten wir uns vor.

EN INSTRUCTIONS

Other languages:

This list of spare parts is also available in other languages. You can get this list from www.kaercher.com in the Service division.
The designation of the part number e.g. 75456380 is equal to 7.545-638.0.

Quantity details:

The quantity details in the spare parts list correspond to the number of pieces of the component installed in the assembly group.

Piece goods:

Spare parts that are sold as piece goods are to be cut to the desired length. The quantities have been indicated as minimum order quantity =1m and must be rounded off to the full meter figure depending on your requirements.

Version/ Plant numbers:

If version or plant numbers are mentioned in the spare parts list, then use the same to check before ordering which spare part needs to be used for your appliance.

Painted parts:

While ordering painted parts that are not mentioned in the spare parts list in their colour variations, please mention the colour number or the colour you require.

Technical changes:

We reserve the right to make technical changes as well as the right to exclusive use of our intellectual property.

FR REMARQUES

Autres langues:

Cette liste de pièces de rechange est disponible en autres langues. Cela est disponible sous www.kaercher.com dans le menu Service.
La désignation du numéro de pièce, par ex. 75456380, correspond au numéro de pièce 7.545-638.0.

Indications de quantité:

Les indications de quantité dans la liste de pièces de rechange correspondre aux nombres de pièces des composant utilisées dans la construction.

Matériel au mètre:

Les pièces de rechange qui sont livrées au mètre doivent être raccourcies à longueur souhaitée par l'acheteur même. Les nombres des pièces sont indiquées en quantité de commande minimale = 1m et doivent être augmentés selon le besoin à une chiffre de mètre complète.

Versions/ Numéros d'usine:

Lorsqu'il sont indiquées des versions ou des numéros d'usine dans la liste de pièces de rechange, vous devez vérifier que composant doit être utilisé pour votre appareil.

Pièces laquées:

Pour commander des pièces laquées, où les différentes couleurs ne sont pas indiquées dans la liste des pièces de rechange, vous devez indiquer en plus le numéro de la couleur ou seulement la couleur.

Modifications techniques:

Nous nous réservons la possibilité des modifications techniques ainsi le droit d'exploitation exclusive de notre propriété intellectuelle.

IT AVVERTENZE

Altre lingue:

Il presente elenco di parti di ricambio è disponibile sul nostro sito Web anche in altre lingue: sotto www.kaercher.com alla voce "Service".

L'indicazione del codice pezzo, ad es. 75456380, corrisponde al codice pezzo 7.545-638.0

Indicazioni di quantità:

Le indicazioni di quantità riportate dall'elenco "parti di ricambio" corrispondono al numero delle singole componenti contenute nella rispettiva unità.

Merce a metro:

Le parti di ricambio fornite come "merce a metro" devono venire in seguito accorciate alla lunghezza necessaria per il montaggio. La quantità unitaria è indicata come "quantità minima di ordinazione = 1m" e deve all'occorrenza venire moltiplicata per il numero intero di metri necessari.

Versioni / Numeri di fabbricazione:

Quando l'elenco "parti di ricambio" riporta diverse versioni o numeri di fabbricazione, confrontare la versione o il numero di fabbricazione del ricambio desiderato con quelle/i presenti nell'elenco e indicarla/o al momento dell'ordinazione.

Parti di ricambio verniciate:

Nel caso di ricambi verniciati, se l'elenco parti di ricambio non ne riporta espressamente i diversi colori, al momento dell'ordinazione è necessario indicare anche il colore o il numero del colore desiderato.

Modifiche tecniche:

Ci riserviamo il diritto di apportare modifiche tecniche così come il diritto di utilizzo esclusivo della nostra proprietà intellettuale.

ES INDICACIONES

Otros idiomas:

La lista de piezas de repuesto se puede adquirir en otros idiomas. La puede adquirir en www.kaercher.com en el área de servicios.

La notación de los números de las piezas, p.ej. 75456380 corresponde al número de pieza 7.545-638.0.

Cantidades:

Las indicaciones de cantidades de la lista de piezas de repuesto corresponden al número de piezas montadas en el componente.

Mercancía por metros:

Las piezas de repuesto que se suministran por metros se pueden cortar al largo deseado. La unidad mínima de pedido es de = 1 m y el número de metros completos se puede aumentar según necesidad.

Versiones/números de fábrica:

Si se indica la versión o número de fábrica en la lista de piezas de repuesto, se debe comprobar en ella la pieza a usar para su aparato antes de realizar el pedido.

Piezas lacadas:

Al realizar pedidos de piezas lacadas que no estén indicadas en los diferentes colores en la lista de piezas de repuesto, se debe indicar también la referencia del color o el color.

Modificaciones técnicas:

Reservados los derechos de realizar modificaciones técnicas y aprovechar nuestra propiedad intelectual.

PL WSKAZÓWKI

Pozostałe języki:

Ta lista części zamiennych jest dostępna w także w innych językach. Mogą ją Państwo pobrać ze strony www.kaercher.com w dziale Serwis.

Sposób zapisywania numeru części, np. 75456380, odpowiada numerowi części 7.545-638.0.

Dane ilości:

Dane ilości podane w liście części zamiennych odpowiadają liczbie sztuk podzespołów tworzących dany moduł.

Towar sprzedawany na metry:

Części zamienne dostarczane jako towar sprzedawany na metry po zamontowaniu należy samodzielnie skrócić do potrzebnej długości. Liczba sztuk podana jest jako minimalna ilość zamówienia = 1m i w zależności od potrzeb zwiększa się ją o kolejne pełne metry.

Wersje/ Numer zakładu:

Jeżeli w liście części zamiennych podane są wersje lub numery zakładu, przed zamówieniem na ich podstawie należy sprawdzić, który podzespół stosuje się w Państwa urządzeniu.

Części lakierowane:

W przypadku zamówień części lakierowanych, które w liście części zamiennych nie podano w wielu kolorach, należy dodatkowo zaznaczyć nr koloru lub kolor.

Zmiany techniczne:

Zastrzegamy sobie prawo do zmian technicznych oraz wyłącznego wykorzystywania naszej własności intelektualnej.

RU УКАЗАНИЯ:

Другие языки:

Данный список запасных частей также доступен на других языках. Вы найдете его на сайте www.kaercher.com в разделе Service
Маркировка номера детали, например, 75456380, соответствует номеру детали 7.545-638.0.

Указание количества:

Количественные данные в списке запасных частей соответствуют числу компонентов, входящих в состав узлов.

Товар, продаваемый на метры:

Запасные части, продающиеся на метры, необходимо обрезать до нужной длины. Число изделий указано в виде минимального объема заказа = 1м и их количество можно округлить до требуемого по мере необходимости.

Варианты исполнения/заводские номера:

Если варианты исполнения или заводские номера указаны в списке запасных частей, то перед заказом необходимо проверить, какая деталь подходит для вашего устройства.

Лакированные детали:

При заказе лакированных деталей, варианты расцветки которых не указаны в списке запасных частей, необходимо дополнительно указать номер цвета или необходимый для вас цвет.

Технические изменения:

Мы оставляем за собой право на технические изменения, а также право на исключительное использование нашей интеллектуальной собственности.

Table of contents

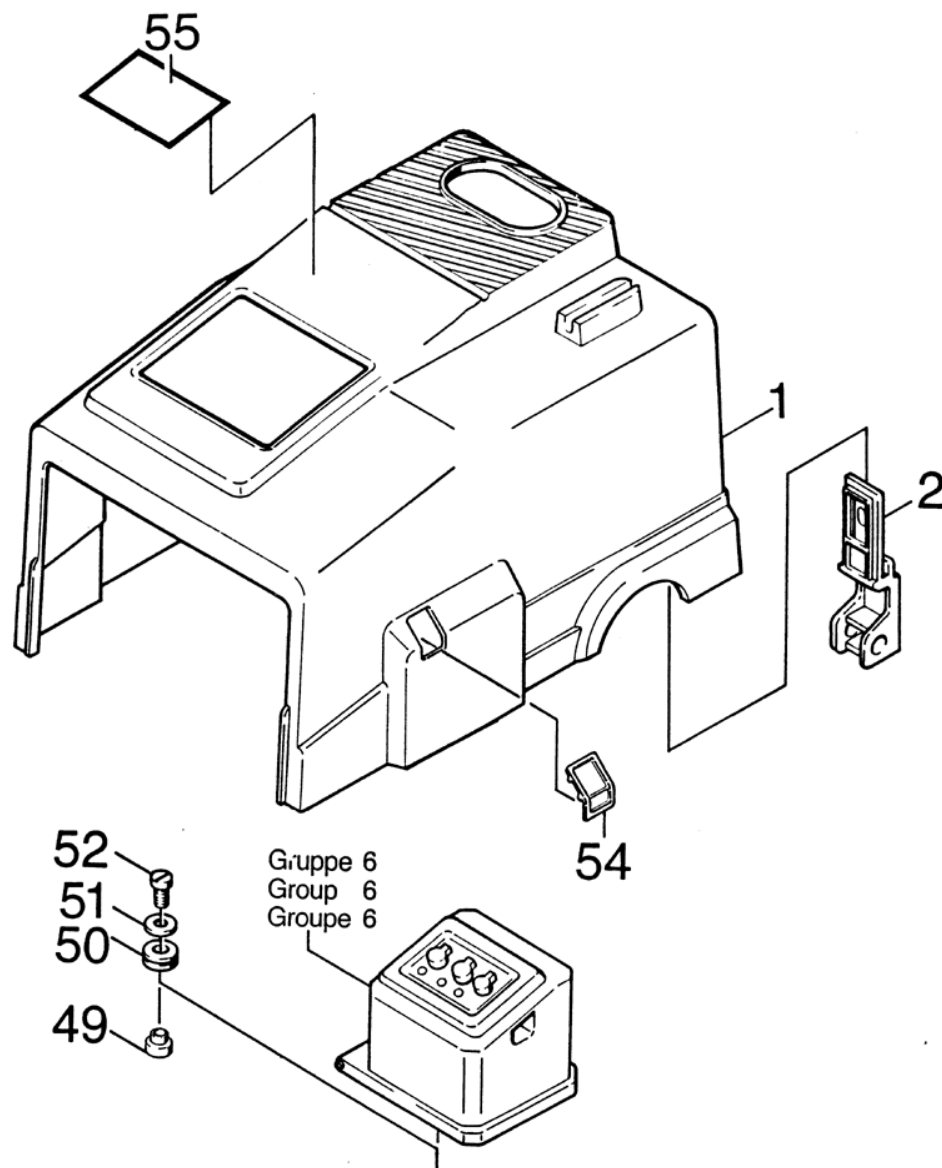
Spare parts list HDS 890 C (5.952-936.0)	6
10 Individual parts	7
11 Cover	8
12 Handhold	10
13 Frame	12
20 Pump set	15
21 Piston	16
49 Pump set (2.883-172.0)	18
22 Delivery side	19
100 Pump set (2.883-172.0)	21
30 Motor	22
31 Motor 1	23
32 Motor 2	25
33 Motor 3	27
40 Blower	29
41 Blower I	30
42 Blower II	32
43 Blower III	34
50 Fuel pump	36
60 Electric control box	38
61 Cover	39
62 Bottom	42
32 Spare parts set ignition transformer (2.883-468.0)	45
70 Flow heater	46
71 Flow heater 1	47
72 Flow heater 2	49
80 Safety system	51
81 Safety system 1	52
82 Safety system 2	54
22 Reed switch replacement (2.880-194.0)	56
90 Accessories	57
91 Hand trigger gun	58
100 Spare part set 1450HW,1500HWS+SUPE (2.883-192.0)	60
92 Jet pipe	61

Spare parts list HDS 890 C (5.952-936.0)

Pos	Name	Qty.	Unit	from ser.nr.	up to ser.nr.
10	Individual parts	1.000	ST	0000000000	0000000000
20	Pump set	1.000	ST	0000000000	0000000000
30	Motor	1.000	ST	0000000000	0000000000
40	Blower	1.000	ST	0000000000	0000000000
50	Fuel pump	1.000	ST	0000000000	0000000000
60	Electric control box	1.000	ST	0000000000	0000000000
70	Flow heater	1.000	ST	0000000000	0000000000
80	Safety system	1.000	ST	0000000000	0000000000
90	Accessories	1.000	ST	0000000000	0000000000

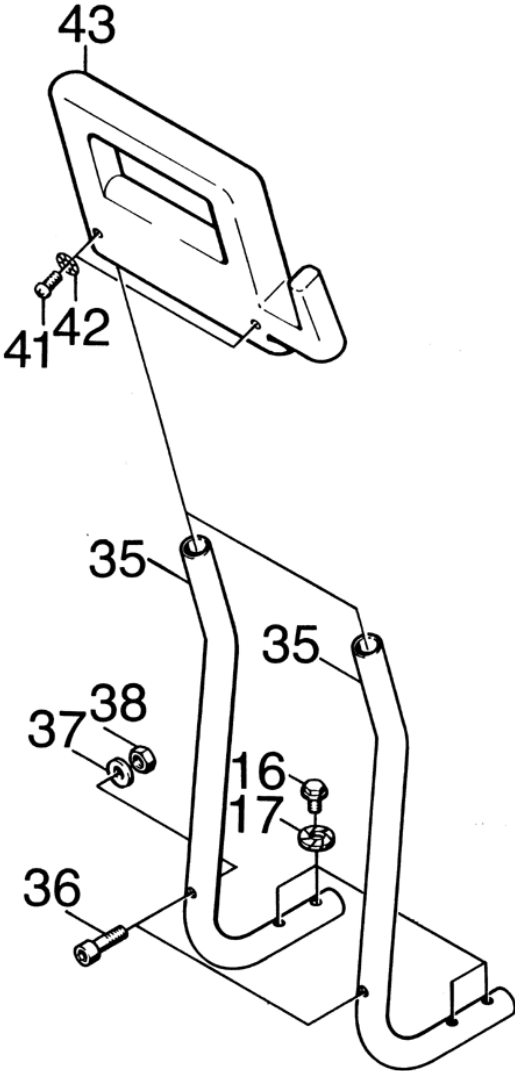
10 Individual parts

Pos	Name	Qty.	Unit	from ser.nr.	up to ser.nr.
11	Cover	1.000	ST	0000000000	0000000000
12	Handhold	1.000	ST	0000000000	0000000000
13	Frame	1.000	ST	0000000000	0000000000



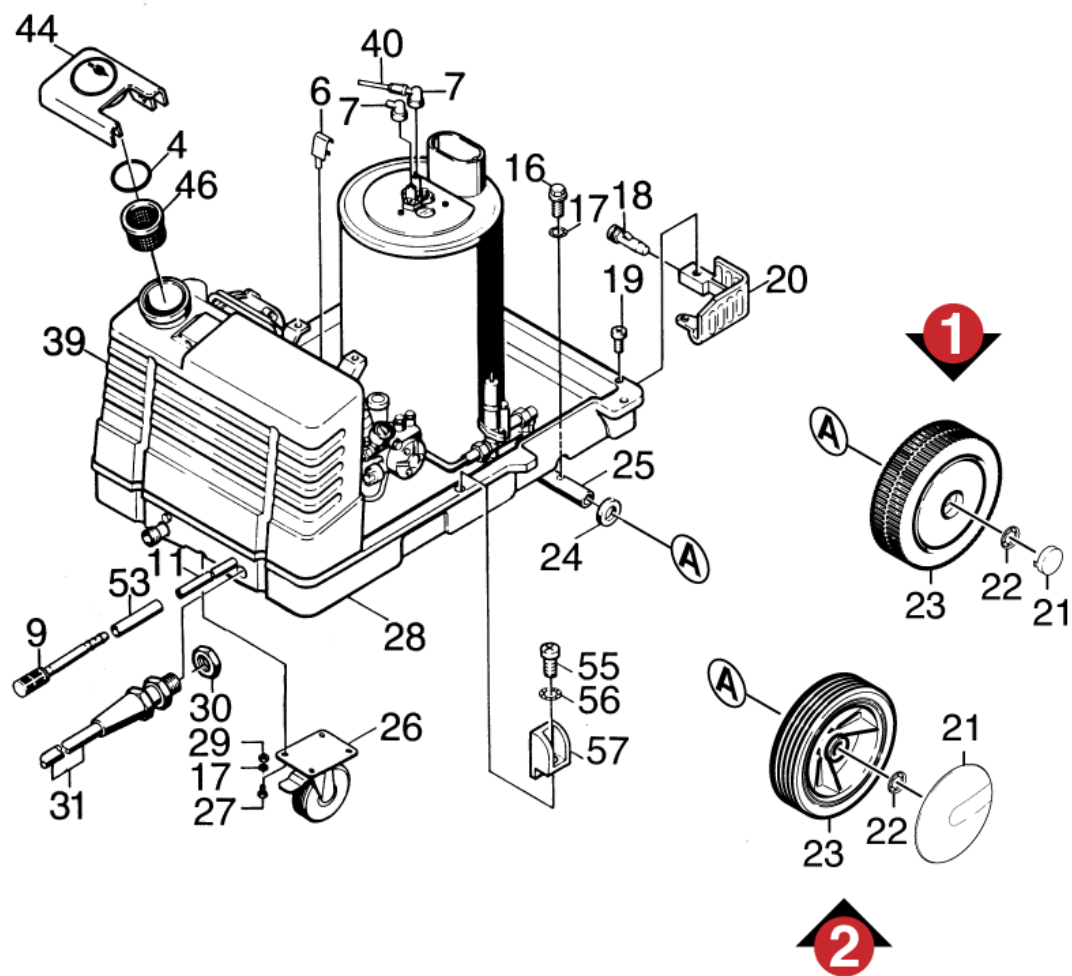
11 Cover

ET/VT (spare/wear parts)	Pos	Material #	Name	Qty.	Unit	from ser.nr.	up to ser.nr.
	1	5.066-688.0	Cover	1.000	ST	0000000000	0000000000
	2	5.042-462.0	Holder	2.000	ST	0000000000	0000000000
	49	5.110-357.0	Sleeve	4.000	ST	0000000000	0000000000
	50		Stockpiling discontinued	4.000	ST	0000000000	0000000000
X	51	7.312-264.0	Washer 5-100HV-A3E ISO 7094	4.000	ST	0000000000	0000000000
	52	7.303-042.0	Screw M5x25 -St-R2R (In6Rd)	4.000	ST	0000000000	0000000000
	54	2.883-167.0	Spare part set	1.000	ST	0000000000	0000000000
	55		Stockpiling discontinued	1.000	ST	0000000000	0000000000



12 Handhold

ET/VT (spare/wear parts)	Pos	Material #	Name	Qty.	Unit	from ser.nr.	up to ser.nr.
	16	6.303-031.0	Screw M8x16-ST-A2R DIN 7500-1	6.000	ST	0000000000	0000000000
X-X	17	7.312-166.0	Toothed lock washer A8,4-FSt-A3E DIN 67	10.000	ST	0000000000	0000000000
	35	5.321-239.0	Handhold	2.000	ST	0000000000	0000000000
X	36	7.306-131.0	Screw M6x45 -8.8-A3R (In6Rd)	2.000	ST	0000000000	0000000000
X-X	37	7.312-260.0	Washer 6 -100HV-A3E ISO 7094	2.000	ST	0000000000	0000000000
X-X	38	7.311-512.0	Hexagon nut M 6-8-A2E ISO 7040	2.000	ST	0000000000	0000000000
	41	6.303-105.0	Screw M6x20-ST-A2R DIN 7500-1	2.000	ST	0000000000	0000000000
	42	7.312-291.0	Washer 6-200HV-A2R ISO7093-1	2.000	ST	0000000000	0000000000
	43	5.321-238.0	Handhold	1.000	ST	0000000000	0000000000



13 Frame

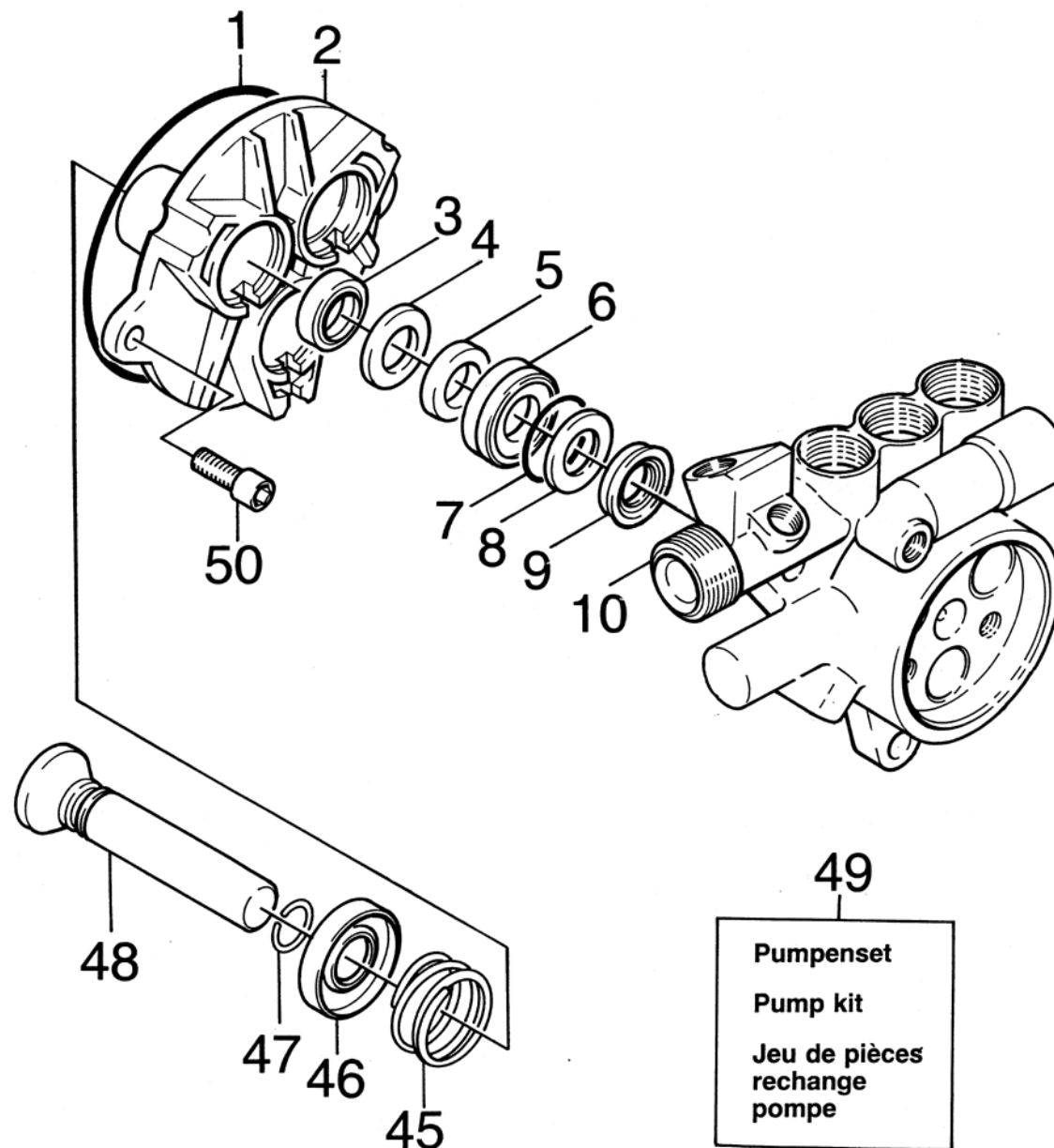
ET/VT (spare/wear parts)	Pos	Material #	Name	Qty.	Unit	from ser.nr.	up to ser.nr.	Footnote text
X-X	4	6.362-635.0	O-Ring seal 50,0x4,0-NBR 70	1.000	ST	0000000000	0000000000	
	6		Stockpiling discontinued	2.000	ST	0000000000	0000000000	
X-X	7	6.618-057.0	Spark plug connector	2.000	ST	0000000000	0000000000	
X	9	6.414-136.0	Filter	1.000	ST	0000000000	0000000000	
X-X	11	6.388-225.0	Hose DN 7	3.000	M	0000000000	0000000000	
	16	6.303-031.0	Screw M8x16-ST-A2R DIN 7500-1	6.000	ST	0000000000	0000000000	
X-X	17	7.312-166.0	Toothed lock washer A8,4-FSt-A3E DIN 67	10.000	ST	0000000000	0000000000	
	18	5.316-240.0	Bolt	2.000	ST	0000000000	0000000000	
	19	7.303-078.0	Sheet metal screw ST4,8X19-ST-A2R (KOMBI	4.000	ST	0000000000	0000000000	
	20	5.321-280.0	Handhold left	1.000	ST	0000000000	0000000000	
	20	5.321-278.0	Handhold right	1.000	ST	0000000000	0000000000	
	21	5.392-013.0	Cap	2.000	ST	0000000000	0000000000	VERSION 1
	21	6.435-237.0	Wheel cap	2.000	ST	0000000000	0000000000	VERSION 2
X-X	22	6.343-162.0	Lock washer -25	2.000	ST	0000000000	0000000000	
	23	6.435-236.0	Wheel D.250	2.000	ST	0000000000	0000000000	VERSION 2
	23	5.515-011.0	Wheel	2.000	ST	0000000000	0000000000	VERSION 1
	24	5.110-358.0	Sleeve	2.000	ST	0000000000	0000000000	VERSION 1
	24	5.110-561.0	Sleeve	2.000	ST	0000000000	0000000000	VERSION 2
	25	5.105-086.0	Axle	1.000	ST	0000000000	0000000000	
X-X	26	6.435-116.0	Castor	1.000	ST	0000000000	0000000000	
	27	7.304-395.0	Hexagonal head screw M8x16-8.8-A2E ISO	4.000	ST	0000000000	0000000000	
	28	5.050-032.0	Frame	1.000	ST	0000000000	0000000000	
X-X	29	7.311-004.0	Hexagon nut M8 -8-A3E ISO 4032	4.000	ST	0000000000	0000000000	
	30	6.641-480.0	Locknut PG13,5	1.000	ST	0000000000	0000000000	
	31		Stockpiling discontinued	1.000	ST	0000000000	0000000000	

13 Frame

ET/VT (spare/wear parts)	Pos	Material #	Name	Qty.	Unit	from ser.nr.	up to ser.nr.	Footnote text
X	32	6.646-030.0	Plug CEE 16A	1.000	ST	0000000000	0000000000	
	39		Stockpiling discontinued	1.000	ST	0000000000	0000000000	
X-X	40	6.641-180.0	Ignition cable	2.000	M	0000000000	0000000000	
X-X	44	5.063-326.0	Cover	1.000	ST	0000000000	0000000000	
	46	6.414-340.0	Strainer	1.000	ST	0000000000	0000000000	
	53	5.025-747.0	Tube	1.000	ST	0000000000	0000000000	
	55	7.303-076.0	Sheet metal screw ST4,8X13 -St-R2R (In6	2.000	ST	0000000000	0000000000	
	56	7.312-278.0	Washer 5-200HV-A2E ISO7093-1	2.000	ST	0000000000	0000000000	
	57	5.042-561.0	Holder	2.000	ST	0000000000	0000000000	

20 Pump set

Pos	Name	Qty.	Unit	from ser.nr.	up to ser.nr.
21	Piston	1.000	ST	0000000000	0000000000
22	Delivery side	1.000	ST	0000000000	0000000000

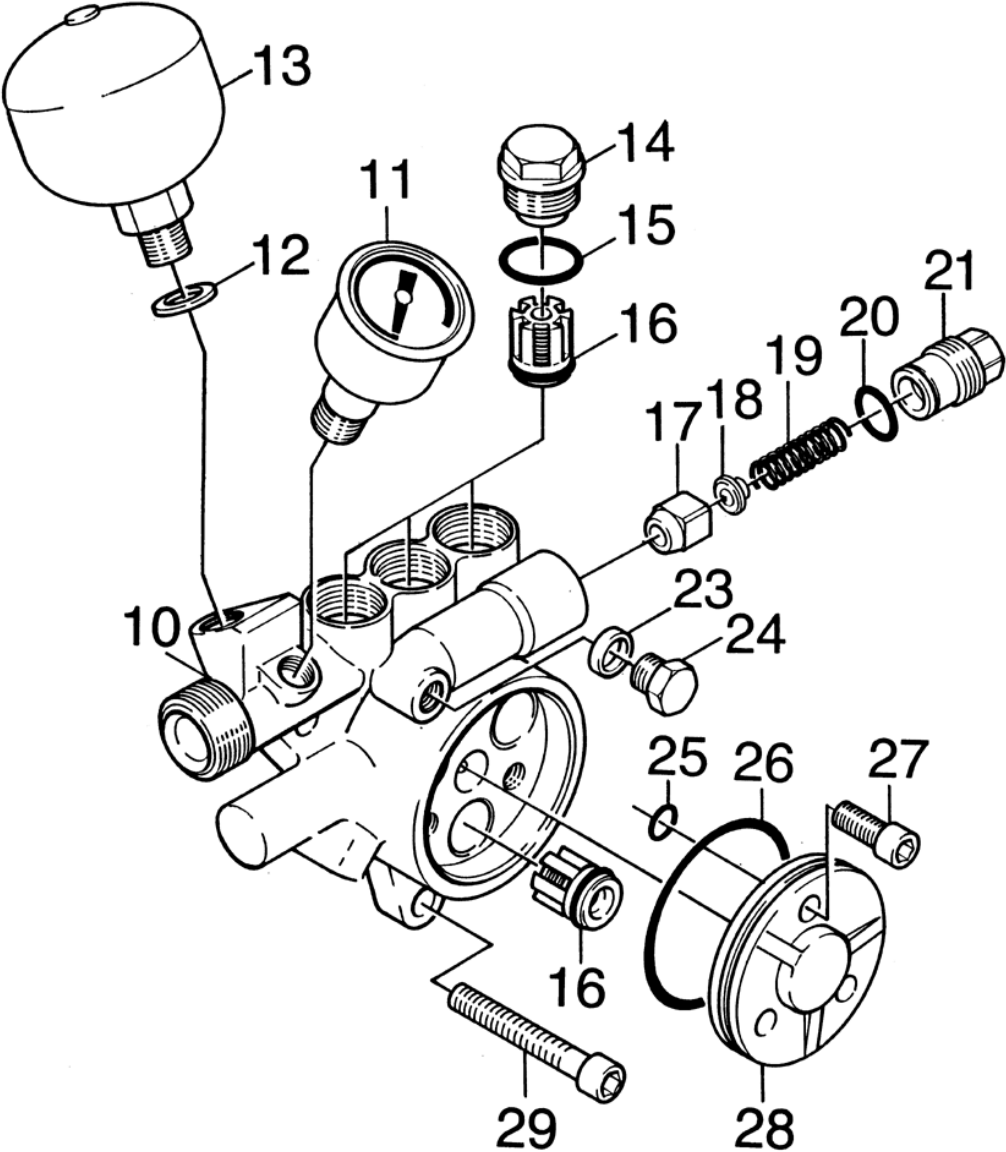


21 Piston

ET/VT (spare/wear parts)	Pos	Material #	Name	Qty.	Unit	from ser.nr.	up to ser.nr.
X-X	1	6.362-613.0	O-Ring seal 101,27X 2,62-NBR 70	1.000	ST	0000000000	0000000000
	2	5.060-326.0	Housing	1.000	ST	0000000000	0000000000
X-X	3	6.365-334.0	Grooved ring 18X26X6/8	3.000	ST	0000000000	0000000000
X-X	4	5.115-432.0	Washer	3.000	ST	0000000000	0000000000
X-X	5	6.365-332.0	Compact seal 18x28x5,8	3.000	ST	0000000000	0000000000
X-X	6	5.112-340.0	Bush	3.000	ST	0000000000	0000000000
X-X	7	6.362-406.0	O-Ring seal 33,05X 1,78-NBR 70	3.000	ST	0000000000	0000000000
X-X	8	5.115-431.0	Washer	3.000	ST	0000000000	0000000000
X-X	9	6.365-333.0	Grooved ring 18X26X5,4	3.000	ST	0000000000	0000000000
	10	4.550-121.0	Cylinder head complete	1.000	ST	0000000000	0000000000
	45	5.332-139.0	Helical spring	3.000	ST	0000000000	0000000000
	46	5.030-602.0	Moulded part	3.000	ST	0000000000	0000000000
X	47	7.343-473.0	Snap ring A18-FST DIN 7993	3.000	ST	0000000000	0000000000
X-X	48	4.553-124.0	Piston complete	3.000	ST	0000000000	0000000000
X-X	49	2.883-172.0	Pump set	1.000	ST	0000000000	0000000000
	50	7.306-094.0	Screw M6x25 -8.8-R3R (In6Rd)	2.000	ST	0000000000	0000000000

49 Pump set (2.883-172.0)

ET/VT (spare/wear parts)	Pos	Material #	Name	Qty.	Unit	from ser.nr.	up to ser.nr.
	10	2.884-918.0	Valve (3 Stück)	2.000	ST	0000000000	0000000000
X-X	20	5.115-431.0	Washer	3.000	ST	0000000000	0000000000
X-X	30	6.362-160.0	O-Ring seal 17,3 X 2,4	3.000	ST	0000000000	0000000000
X-X	40	6.362-169.0	O-Ring seal 12,0 X 2,0	1.000	ST	0000000000	0000000000
X-X	50	6.362-204.0	O-Ring seal 60,0 X 2,0-NBR 70	1.000	ST	0000000000	0000000000
X-X	60	6.362-384.0	O-Ring seal 9x1,5 - NBR 70	3.000	ST	0000000000	0000000000
X-X	70	6.362-402.0	O-Ring seal 11,0 X 1,3-NBR 70	1.000	ST	0000000000	0000000000
X-X	80	6.362-406.0	O-Ring seal 33,05X 1,78-NBR 70	3.000	ST	0000000000	0000000000
X-X	90	6.362-477.0	O-Ring seal complete 1ST.-R.	1.000	ST	0000000000	0000000000
X-X	100	6.362-482.0	O-Ring seal 10 x 1,5-NBR 70	1.000	ST	0000000000	0000000000
	110	6.362-602.0	O-Ring seal complete 1ST.-R.	1.000	ST	0000000000	0000000000
X-X	120	6.362-613.0	O-Ring seal 101,27X 2,62-NBR 70	1.000	ST	0000000000	0000000000
X-X	130	6.365-332.0	Compact seal 18x28x5,8	3.000	ST	0000000000	0000000000
X-X	140	6.365-333.0	Grooved ring 18X26X5,4	3.000	ST	0000000000	0000000000



22 Delivery side

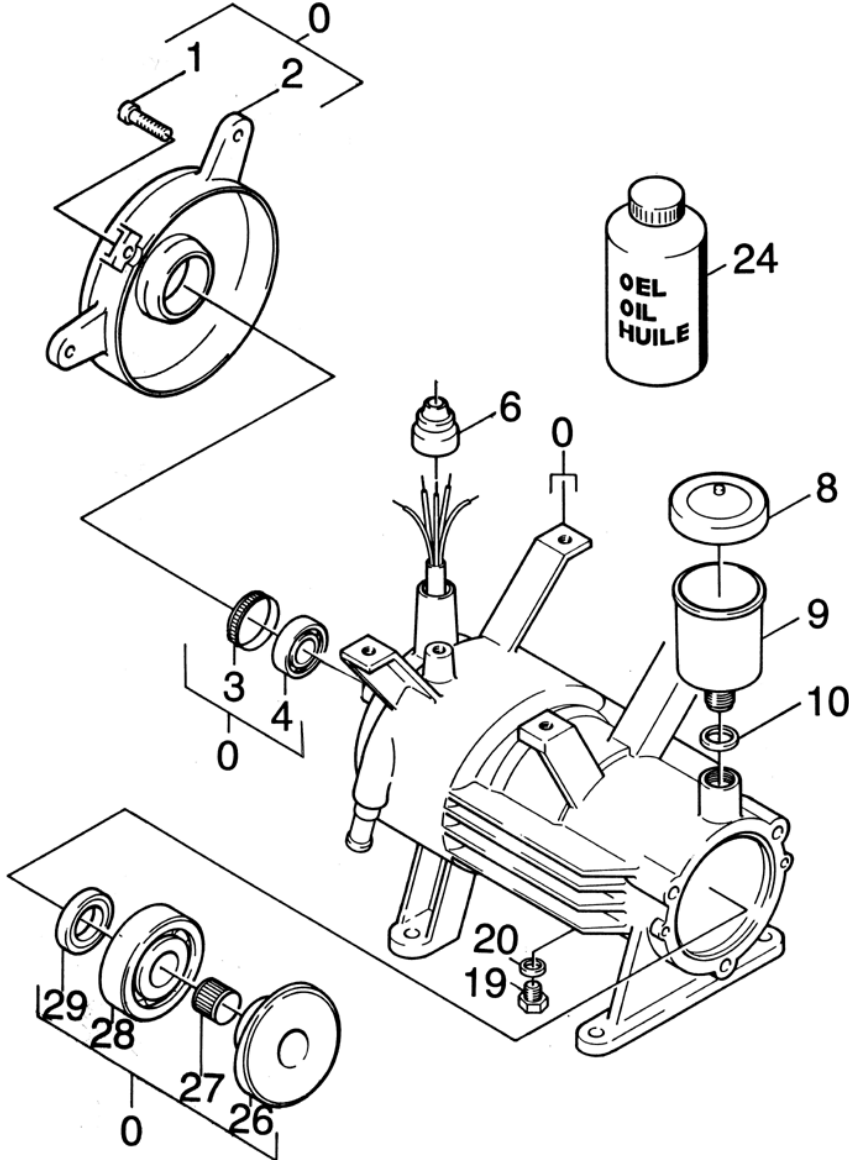
ET/VT (spare/wear parts)	Pos	Material #	Name	Qty.	Unit	from ser.nr.	up to ser.nr.
	10	4.550-121.0	Cylinder head complete	1.000	ST	0000000000	0000000000
X-X	11	6.421-214.0	Pressure gauge 0-300 BAR	1.000	ST	0000000000	0000000000
X-X	12	7.362-005.0	Joint ring A14x18 -Cu DIN 7603	1.000	ST	0000000000	0000000000
X-X	13	6.505-025.0	Pressure accumulator	1.000	ST	0000000000	0000000000
X-X	14	5.583-115.0	Valve screw	3.000	ST	0000000000	0000000000
X-X	15	6.362-160.0	O-Ring seal 17,3 X 2,4	3.000	ST	0000000000	0000000000
	16	4.580-295.0	Valve complete	6.000	ST	0000000000	0000000000
X-X	17	4.582-007.0	Valve disc complete	1.000	ST	0000000000	0000000000
X-X	18	5.584-060.0	Valve pin	1.000	ST	0000000000	0000000000
	19	5.332-140.0	Helical spring	1.000	ST	0000000000	0000000000
X-X	20	6.362-169.0	O-Ring seal 12,0 X 2,0	1.000	ST	0000000000	0000000000
	21	5.583-110.0	Valve screw	1.000	ST	0000000000	0000000000
X-X	23	7.362-003.0	Joint ring A10x13,5 -Cu DIN 7603	1.000	ST	0000000000	0000000000
	24	7.382-085.0	Screw plug M10x1-St-A2E DIN 910	1.000	ST	0000000000	0000000000
X-X	25	6.362-384.0	O-Ring seal 9x1,5 - NBR 70	3.000	ST	0000000000	0000000000
X-X	26	6.362-204.0	O-Ring seal 60,0 X 2,0-NBR 70	1.000	ST	0000000000	0000000000
X-X	27	7.306-041.0	Cylinder head screw M8x20 -8.8-A2E ISO	3.000	ST	0000000000	0000000000
	28	5.063-354.0	Cover	1.000	ST	0000000000	0000000000
X-X	29	7.306-125.0	Cylinder head screw M10x70-8.8-A3E ISO4	3.000	ST	0000000000	0000000000
X-X	100	2.883-172.0	Pump set	1.000	ST	0000000000	0000000000

100 Pump set (2.883-172.0)

ET/VT (spare/wear parts)	Pos	Material #	Name	Qty.	Unit	from ser.nr.	up to ser.nr.
	10	2.884-918.0	Valve (3 Stück)	2.000	ST	0000000000	0000000000
X-X	20	5.115-431.0	Washer	3.000	ST	0000000000	0000000000
X-X	30	6.362-160.0	O-Ring seal 17,3 X 2,4	3.000	ST	0000000000	0000000000
X-X	40	6.362-169.0	O-Ring seal 12,0 X 2,0	1.000	ST	0000000000	0000000000
X-X	50	6.362-204.0	O-Ring seal 60,0 X 2,0-NBR 70	1.000	ST	0000000000	0000000000
X-X	60	6.362-384.0	O-Ring seal 9x1,5 - NBR 70	3.000	ST	0000000000	0000000000
X-X	70	6.362-402.0	O-Ring seal 11,0 X 1,3-NBR 70	1.000	ST	0000000000	0000000000
X-X	80	6.362-406.0	O-Ring seal 33,05X 1,78-NBR 70	3.000	ST	0000000000	0000000000
X-X	90	6.362-477.0	O-Ring seal complete 1ST.-R.	1.000	ST	0000000000	0000000000
X-X	100	6.362-482.0	O-Ring seal 10 x 1,5-NBR 70	1.000	ST	0000000000	0000000000
	110	6.362-602.0	O-Ring seal complete 1ST.-R.	1.000	ST	0000000000	0000000000
X-X	120	6.362-613.0	O-Ring seal 101,27X 2,62-NBR 70	1.000	ST	0000000000	0000000000
X-X	130	6.365-332.0	Compact seal 18x28x5,8	3.000	ST	0000000000	0000000000
X-X	140	6.365-333.0	Grooved ring 18X26X5,4	3.000	ST	0000000000	0000000000

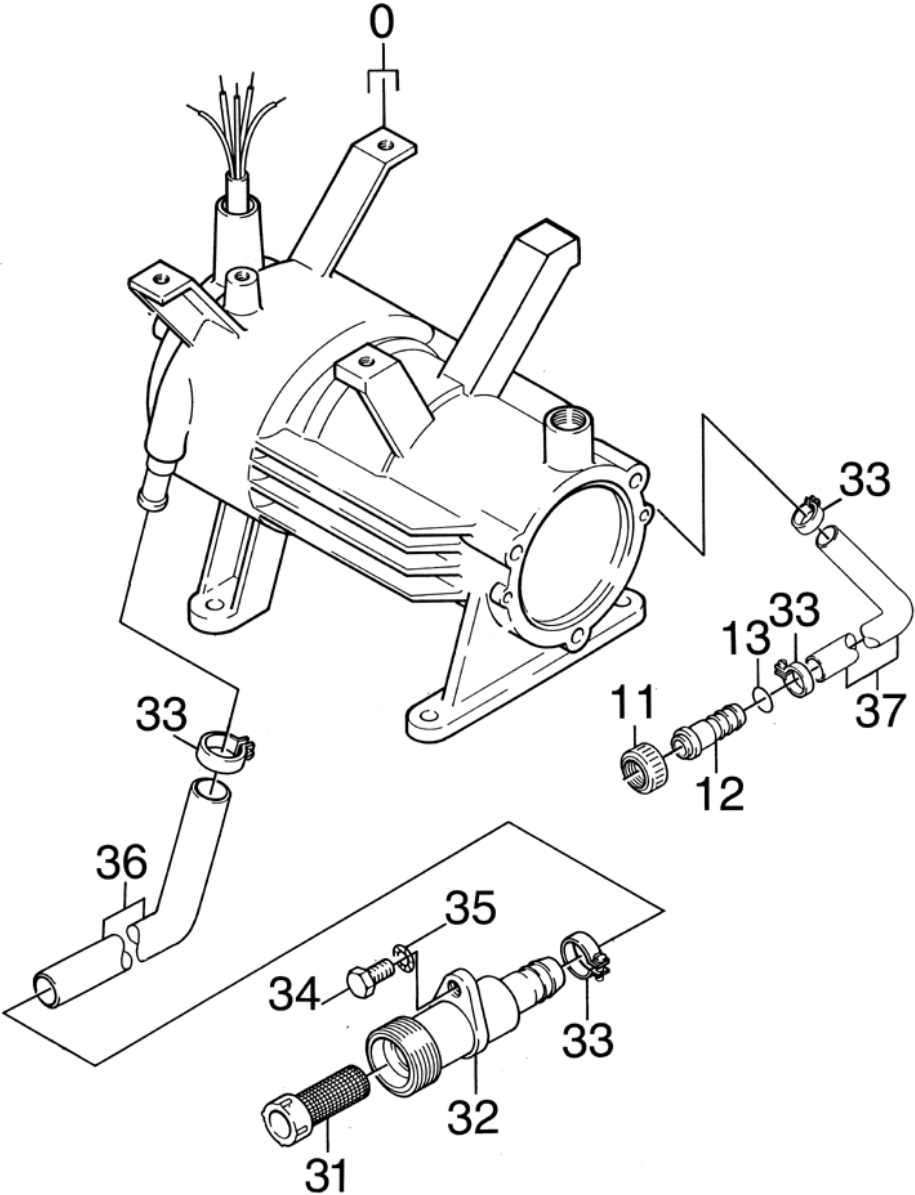
30 Motor

Pos	Name	Qty.	Unit	from ser.nr.	up to ser.nr.
31	Motor 1	1.000	ST	0000000000	0000000000
32	Motor 2	1.000	ST	0000000000	0000000000
33	Motor 3	1.000	ST	0000000000	0000000000



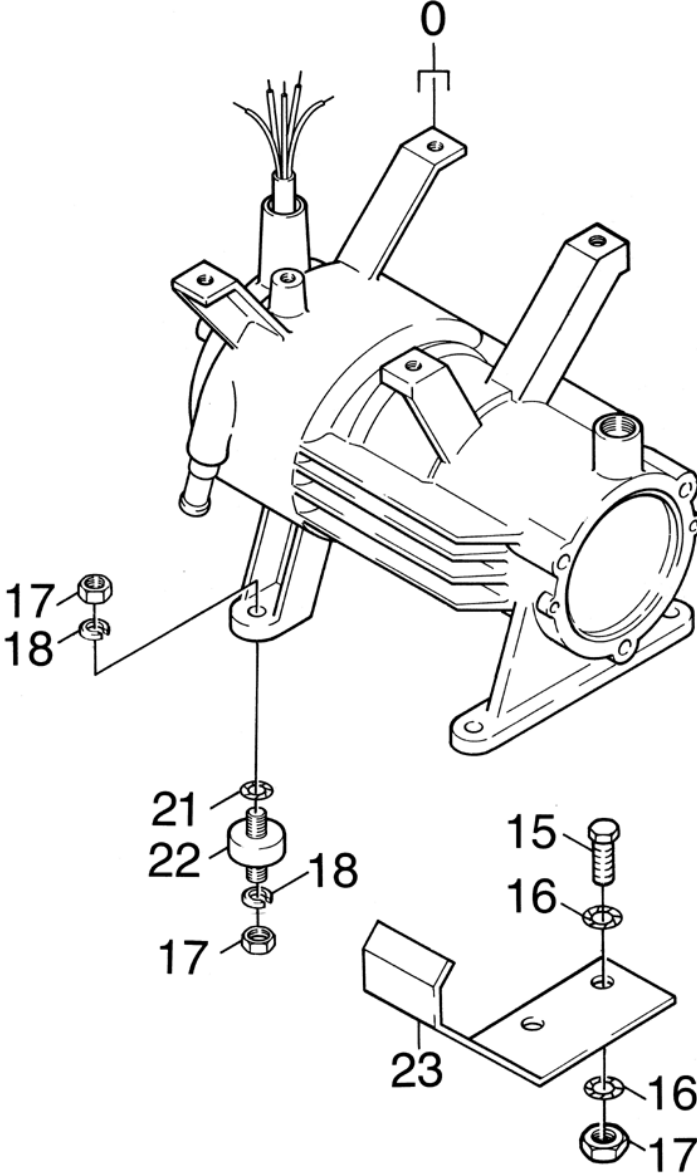
31 Motor 1

ET/VT (spare/wear parts)	Pos	Material #	Name	Qty.	Unit	from ser.nr.	up to ser.nr.
	0		Stockpiling discontinued	1.000	ST	0000000000	0000000000
	1	7.306-022.0	Cylinder head screw M 6x20-8.8-A2E ISO47	3.000	ST	0000000000	0000000000
	2	5.063-349.0	Cover	1.000	ST	0000000000	0000000000
X	3	6.343-029.0	Tolerance ring 47X8	1.000	ST	0000000000	0000000000
	4	7.401-126.0	Ball bearing 6204-2Z -Wälzl.St DIN 625	1.000	ST	0000000000	0000000000
	6	5.365-148.0	Profile gasket	1.000	ST	0000000000	0000000000
X-X	8	5.063-189.0	Cover	1.000	ST	0000000000	0000000000
X-X	9	5.070-048.0	Box	1.000	ST	0000000000	0000000000
X-X	10	5.363-100.0	Joint ring	1.000	ST	0000000000	0000000000
	19	7.382-232.0	Screw plug M12x1,5-A-CuZn DIN 7604	1.000	ST	0000000000	0000000000
X-X	20	7.362-004.0	Joint ring A12x15,5 -Cu DIN 7603	1.000	ST	0000000000	0000000000
X-X	24	6.288-016.0	Gear oil 1L	1.000	ST	0000000000	0000000000
	26	5.120-198.0	Wobble plate	1.000	ST	0000000000	0000000000
X-X	27	6.343-024.0	Tolerance ring	1.000	ST	0000000000	0000000000
	28	7.401-035.0	Ball bearing 7307B-TN DIN 628	1.000	ST	0000000000	0000000000
	29	7.367-017.0	Radial shaft seal ring A28x47x7-NBR DIN	1.000	ST	0000000000	0000000000



32 Motor 2

ET/VT (spare/wear parts)	Pos	Material #	Name	Qty.	Unit	from ser.nr.	up to ser.nr.	Footnote text
	0		Stockpiling discontinued	1.000	ST	0000000000	0000000000	
X-X	11	5.310-061.0	Nut R 3/4"	1.000	ST	0000000000	0000000000	
X-X	12	5.443-224.0	Hose stem	1.000	ZST	0000000000	0000000000	
X-X	13	6.362-078.0	O-Ring seal 13,3x2,4	1.000	ST	0000000000	0000000000	
X-X	24	6.288-016.0	Gear oil 1L	1.000	ST	0000000000	0000000000	
X-X	31	6.414-282.0	Strainer	1.000	ST	0000000000	0000000000	
	32	5.427-123.0	Manifold	1.000	ST	0000000000	0000000000	
X-X	33	6.388-547.0	Hose clip	4.000	ST	0000000000	0000000000	
	34	7.309-008.0	Screw assembly M6x12-5.6-A2E-S1-N ISO106	1.000	ST	0000000000	0000000000	
X	35	7.312-167.0	Toothed lock washer A6,4-FSt-A3E DIN 67	1.000	ST	0000000000	0000000000	
X-X	36	6.388-719.0	Hose DN17	1.000	M	0000000000	0000000000	TO ORDER AS CUT GOODS
X-X	37	6.388-719.0	Hose DN17	1.000	M	0000000000	0000000000	TO ORDER AS CUT GOODS

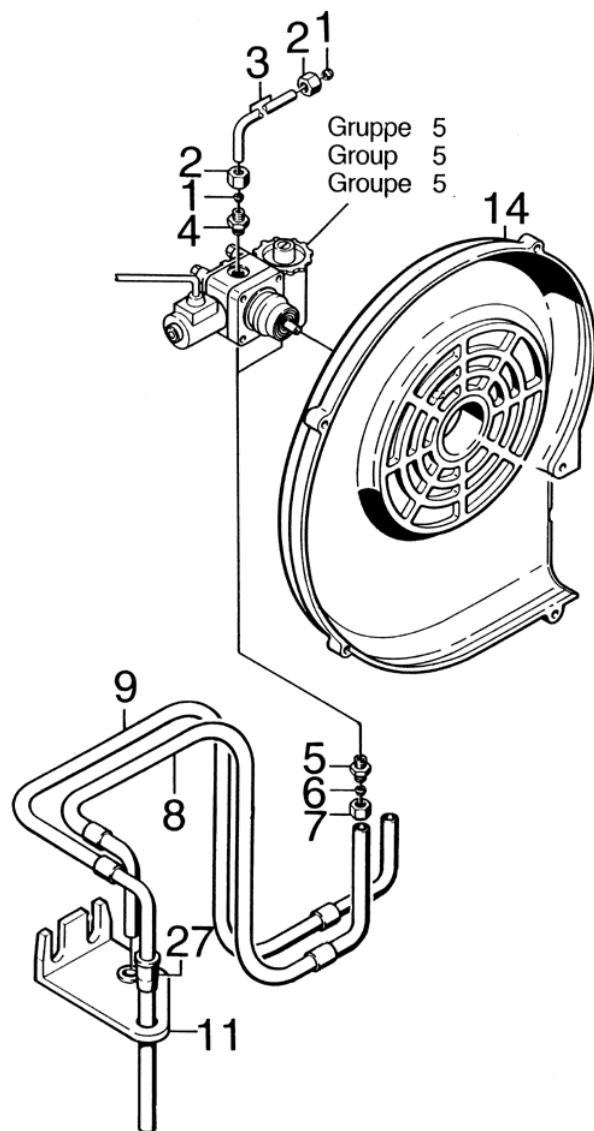


33 Motor 3

ET/VT (spare/wear parts)	Pos	Material #	Name	Qty.	Unit	from ser.nr.	up to ser.nr.
	0		Stockpiling discontinued	1.000	ST	0000000000	0000000000
	15	7.304-395.0	Hexagonal head screw M8x16-8.8-A2E ISO	2.000	ST	0000000000	0000000000
X-X	16	7.312-166.0	Toothed lock washer A8,4-FSt-A3E DIN 67	4.000	ST	0000000000	0000000000
X-X	17	7.311-004.0	Hexagon nut M8 -8-A3E ISO 4032	10.000	ST	0000000000	0000000000
X	18	7.313-004.0	Spring washer B 8-FSt-A3E DIN 127	8.000	ST	0000000000	0000000000
	21	7.312-160.0	Toothed lock washer A10,5 -FSt-A3E DIN	4.000	ST	0000000000	0000000000
X-X	22	6.339-095.0	Rubber buffer	4.000	ST	0000000000	0000000000
	23		Stockpiling discontinued	1.000	ST	0000000000	0000000000

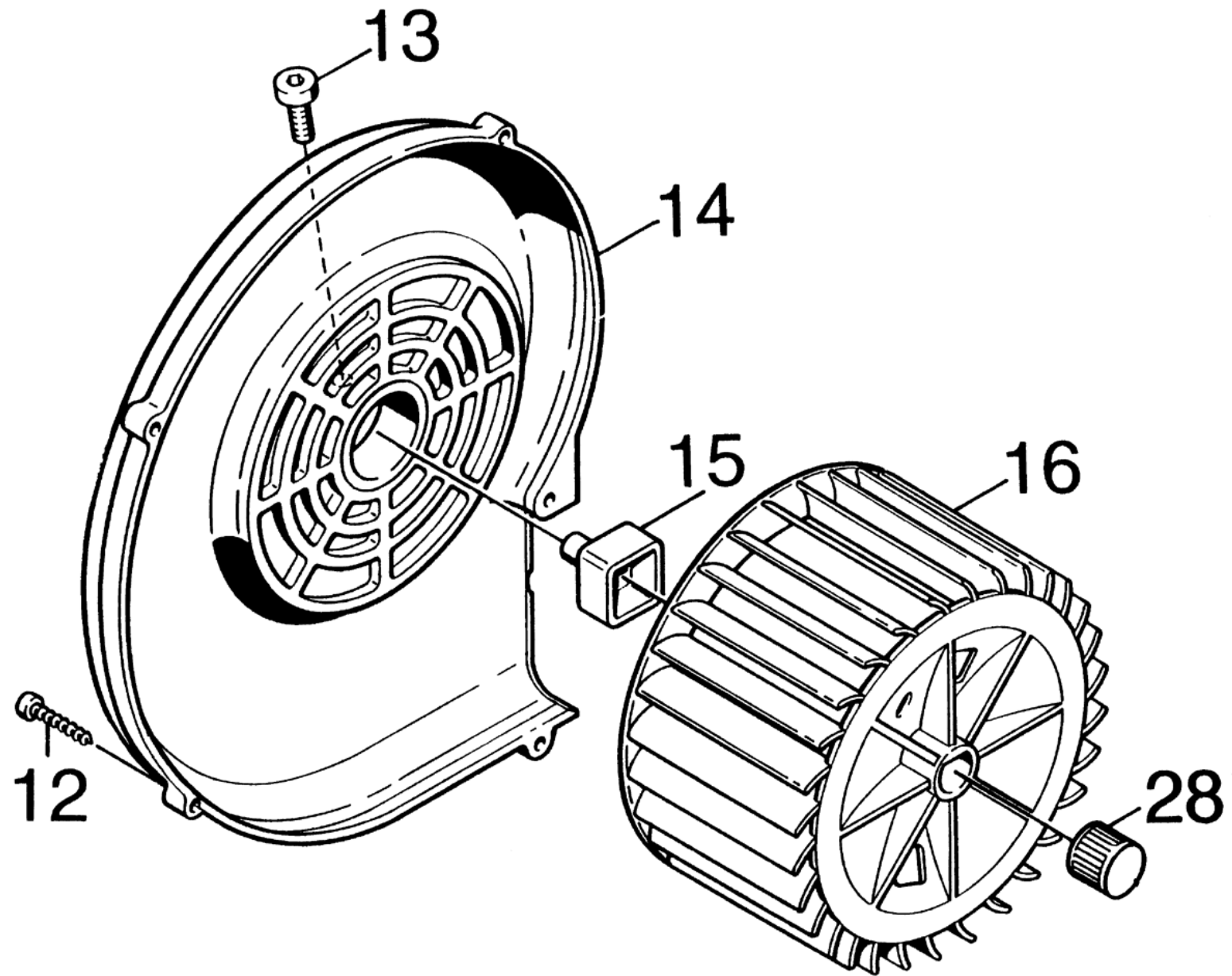
40 Blower

Pos	Name	Qty.	Unit	from ser.nr.	up to ser.nr.
41	Blower I	1.000	ST	0000000000	0000000000
42	Blower II	1.000	ST	0000000000	0000000000
43	Blower III	1.000	ST	0000000000	0000000000



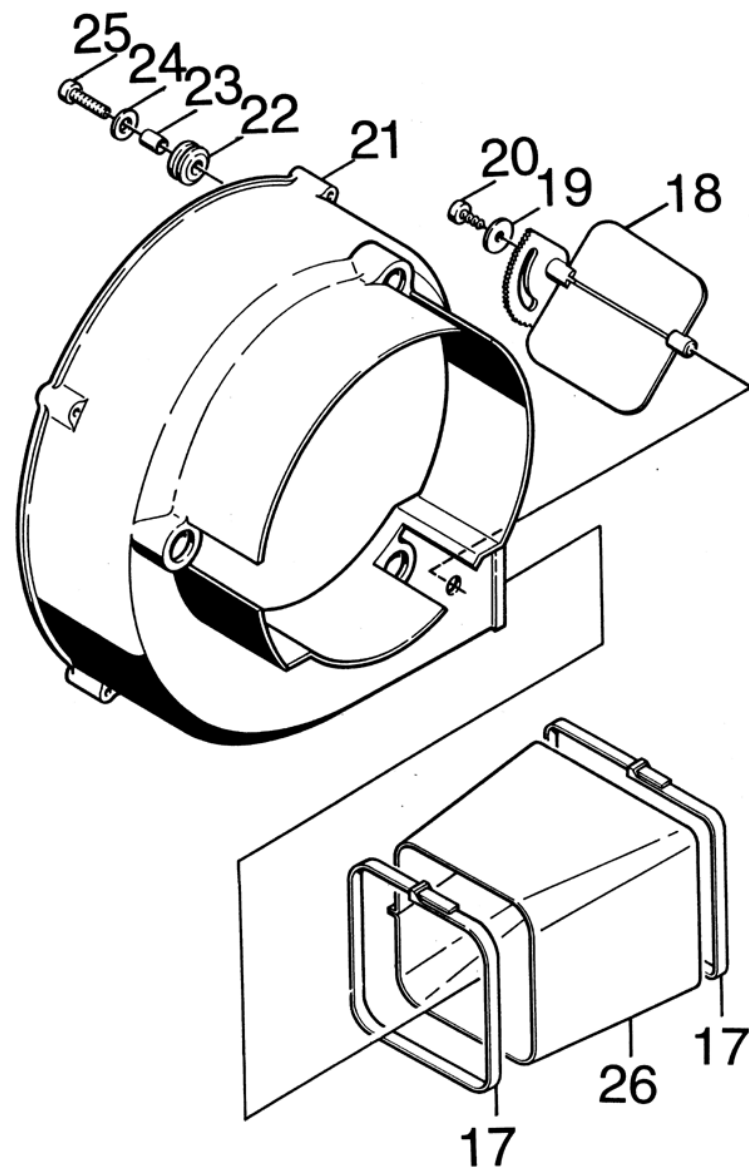
41 Blower I

ET/VT (spare/wear parts)	Pos	Material #	Name	Qty.	Unit	from ser.nr.	up to ser.nr.
X-X	1	6.389-263.0	Cutting ring d.4	2.000	ST	0000000000	0000000000
X-X	2	6.389-262.0	Union nut A 4-LL	2.000	ST	0000000000	0000000000
	3	5.423-098.0	Conduit	1.000	ST	0000000000	0000000000
X	4	6.389-261.0	Screw union	1.000	ST	0000000000	0000000000
X-X	5	6.386-181.0	Connection piece 6-L1/8NPT	2.000	ST	0000000000	0000000000
X-X	6	6.386-160.0	Cutting ring D 6-L/S	2.000	ST	0000000000	0000000000
X-X	7	6.386-346.0	Union nut A 6-L	2.000	ST	0000000000	0000000000
	8	6.389-089.0	Hose assembly	1.000	ST	0000000000	0000000000
	9	6.389-090.0	Hose assembly	1.000	ST	0000000000	0000000000
	11	5.042-432.0	Holder	1.000	ST	0000000000	0000000000
	14	5.063-274.0	Cover	1.000	ST	0000000000	0000000000
	27	5.365-145.0	Profile gasket	2.000	ST	0000000000	0000000000



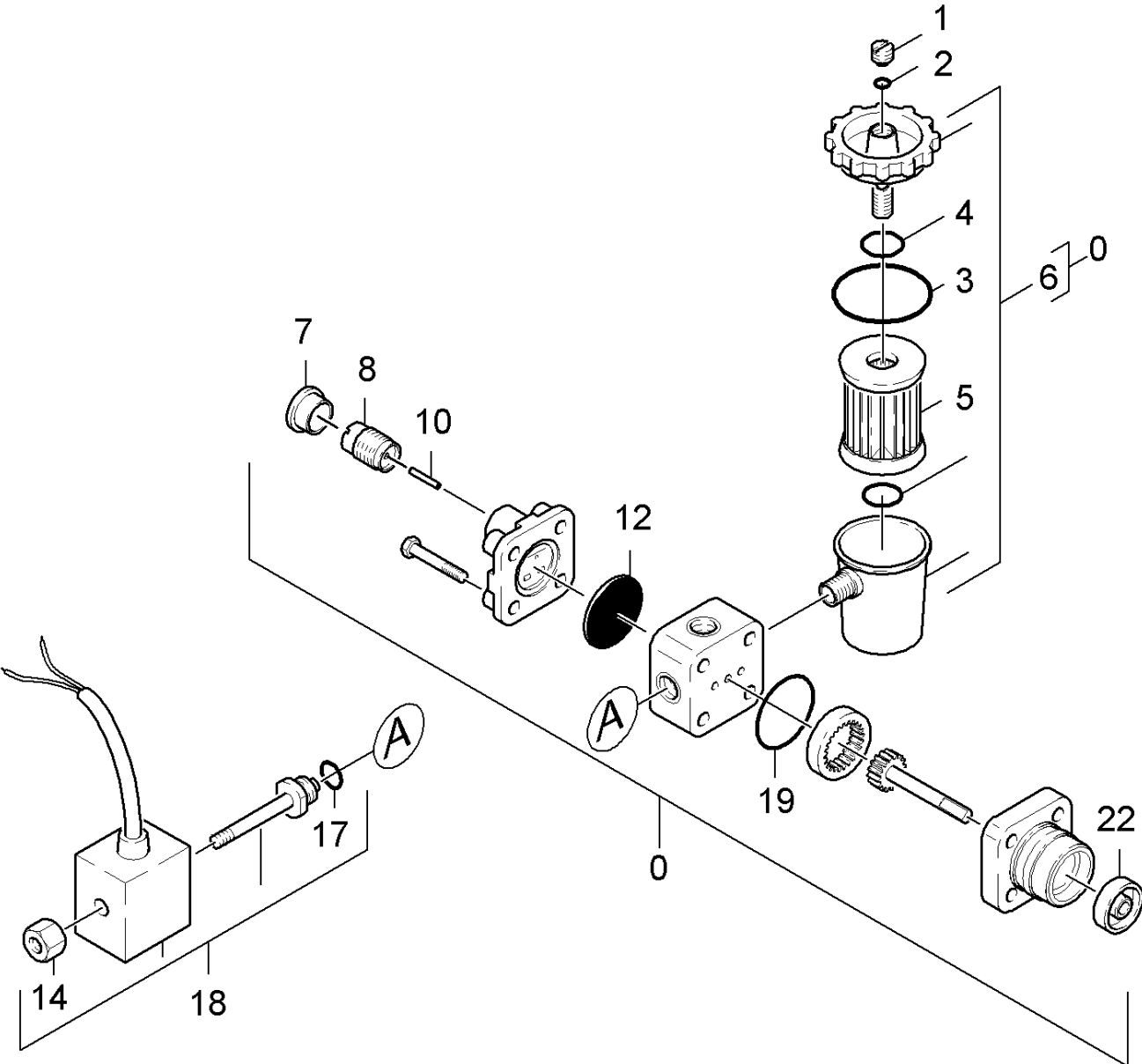
42 Blower II

ET/VT (spare/wear parts)	Pos	Material #	Name	Qty.	Unit	from ser.nr.	up to ser.nr.
	12	7.303-084.0	Screw 4x25 -10.9-R2R (K-In6Rd)	5.000	ST	0000000000	0000000000
	13	7.306-090.0	Screw M6x16 -8.8-R3R (In6Rd)	1.000	ST	0000000000	0000000000
	14	5.063-274.0	Cover	1.000	ST	0000000000	0000000000
X-X	15	5.471-060.0	Coupling element	1.000	ST	0000000000	0000000000
X-X	16	5.600-021.0	Blower wheel	1.000	ST	0000000000	0000000000
X-X	28	6.343-166.0	Tolerance ring D14X8	1.000	ST	0000000000	0000000000



43 Blower III

ET/VT (spare/wear parts)	Pos	Material #	Name	Qty.	Unit	from ser.nr.	up to ser.nr.
X-X	17	6.388-608.0	Tightening strap	2.000	ST	0000000000	0000000000
	18	5.606-002.0	Air flap	1.000	ST	0000000000	0000000000
	19	7.312-278.0	Washer 5-200HV-A2E ISO7093-1	1.000	ST	0000000000	0000000000
X-X	20	7.303-077.0	Sheet metal screw ST4,8X16-ST-A2R (IN6R	1.000	ST	0000000000	0000000000
	21	5.605-143.0	Housing	1.000	ST	0000000000	0000000000
	22	5.379-011.0	Rubber ring	3.000	ST	0000000000	0000000000
	23	5.110-306.0	Sleeve	3.000	ST	0000000000	0000000000
X	24	7.312-264.0	Washer 5-100HV-A3E ISO 7094	3.000	ST	0000000000	0000000000
	25	6.303-320.0	Screw M 5x 20-St-R2R	3.000	ST	0000000000	0000000000
X-X	26	5.178-026.0	Cloth collar	1.000	ST	0000000000	0000000000

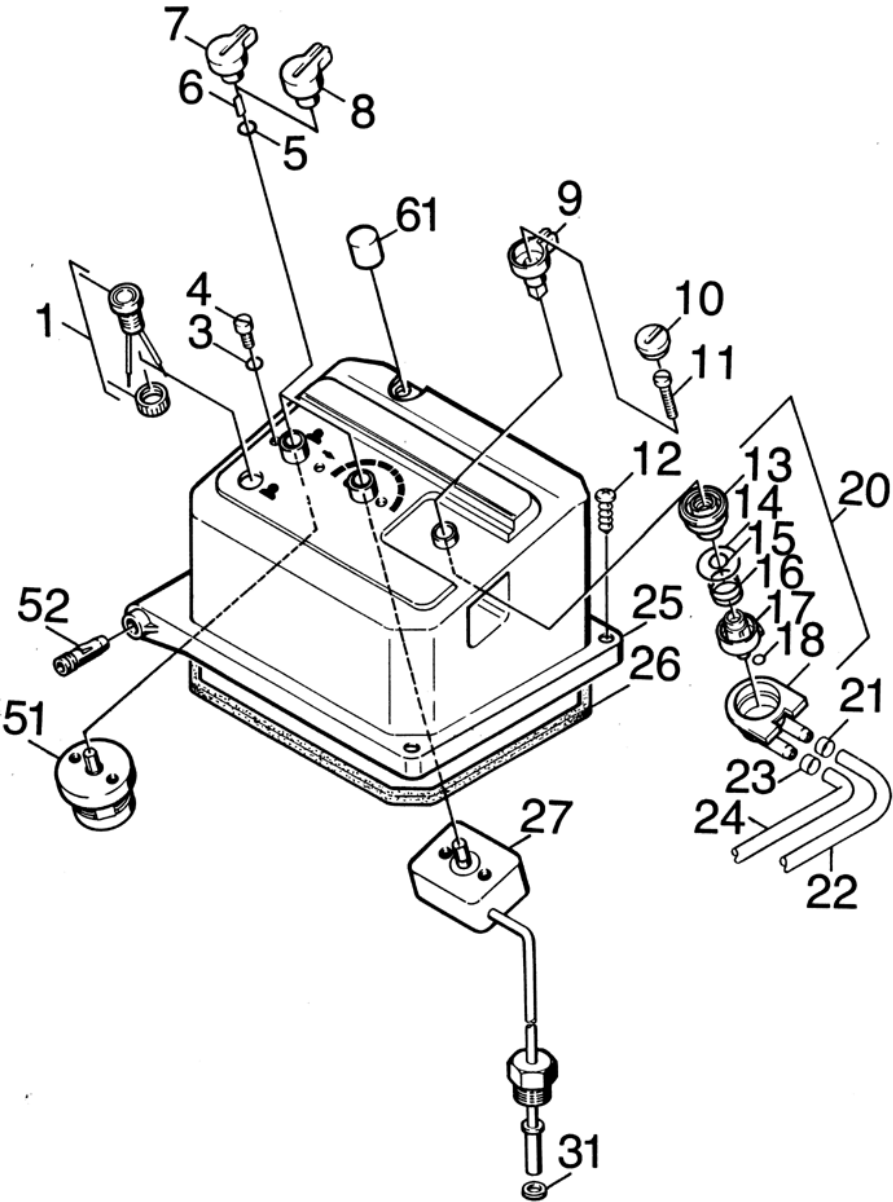


50 Fuel pump

ET/VT (spare/wear parts)	Pos	Material #	Name	Qty.	Unit
X-X	0	6.472-925.0	Pump oil burner only for replacement	1.000	ST
	1	6.472-107.0	Screw ventilation	1.000	ST
	2	6.472-106.0	O-Ring seal 5,0 X 1,8	1.000	ST
X-X	3	6.472-111.0	O-Ring seal 32,0 X 1,6	1.000	ST
	4	6.472-112.0	O-Ring seal 10,0 x 2,4 NBR 70	1.000	ST
X-X	5	6.472-113.0	Filter cartridge	1.000	ST
	6	6.472-123.0	Filter housing complete	1.000	ST
	7	6.472-122.0	Protecting cap	1.000	ST
	8	6.472-109.0	Housing spring	1.000	ST
	10	6.472-108.0	Pin	1.000	ST
X-X	12	6.472-128.0	Diaphragm	1.000	ST
	14	6.472-340.0	Knurled nut	1.000	ST
	17	6.472-125.0	O-Ring seal 12,0 X 1,5	1.000	ST
X-X	18	6.472-411.0	Solenoid valve	1.000	ST
X-X	19	6.472-120.0	O-Ring seal 28,5 X 1,6	1.000	ST
X	22	6.472-105.0	Seal axle	1.000	ST

60 Electric control box

Pos	Name	Qty.	Unit	from ser.nr.	up to ser.nr.
61	Cover	1.000	ST	0000000000	0000000000
62	Bottom	1.000	ST	0000000000	0000000000

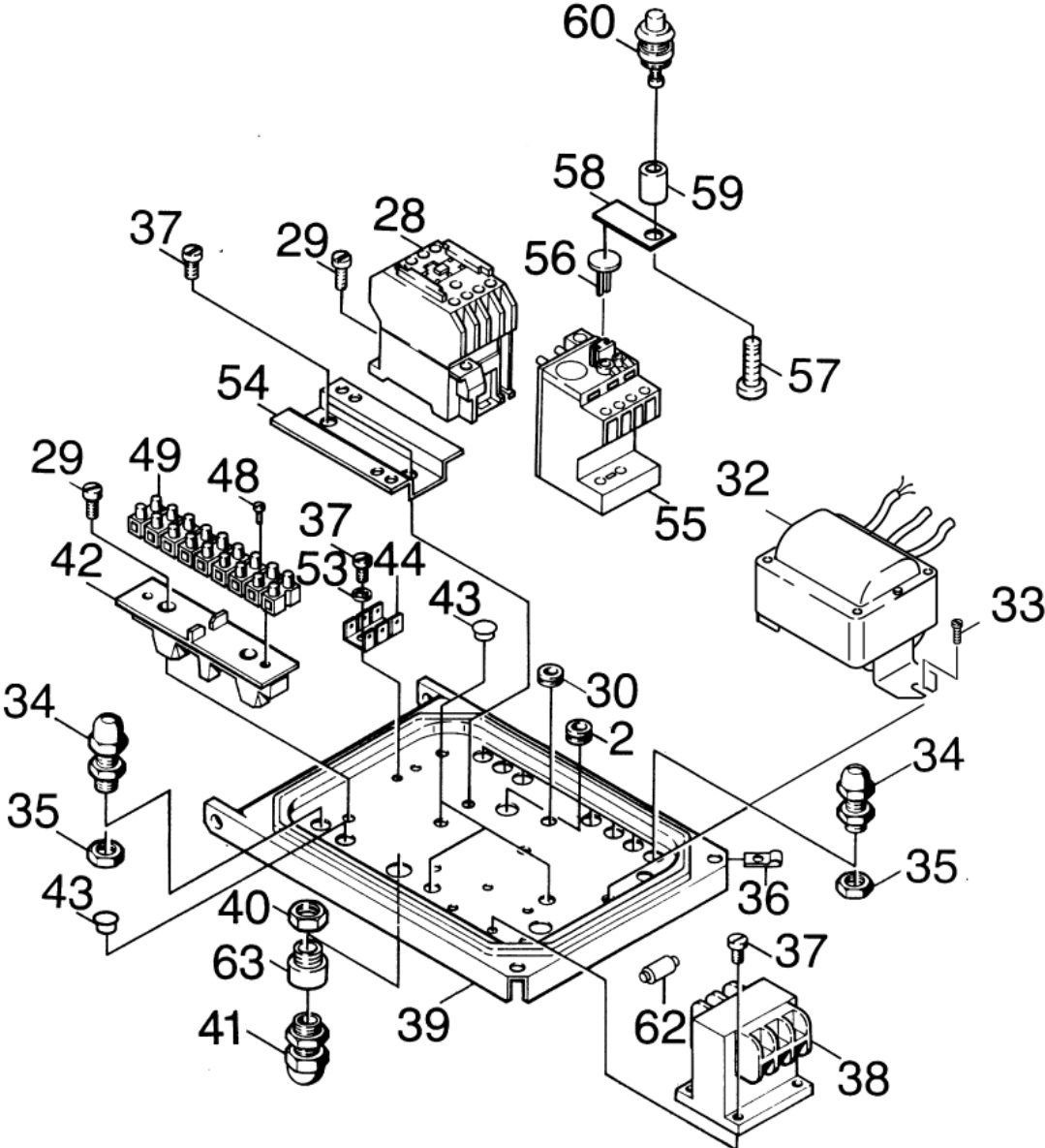


61 Cover

ET/VT (spare/wear parts)	Pos	Material #	Name	Qty.	Unit	from ser.nr.	up to ser.nr.
X-X	1	6.651-184.0	Pilot lamp red	1.000	ST	0000000000	0000000000
	3	5.363-225.0	Joint ring	4.000	ST	0000000000	0000000000
	4	7.306-513.0	Cylinder head screw M 4x10-A2-70 sw DIN	4.000	ST	0000000000	0000000000
X-X	5	6.362-078.0	O-Ring seal 13,3x2,4	2.000	ST	0000000000	0000000000
X-X	6	6.313-014.0	Spring element	2.000	ST	0000000000	0000000000
X	7	5.321-183.0	Handhold	1.000	ST	0000000000	0000000000
	8	5.321-182.0	Handhold	1.000	ST	0000000000	0000000000
	9		Stockpiling discontinued	1.000	ST	0000000000	0000000000
	10	5.132-063.0	Plug	1.000	ST	0000000000	0000000000
	11	7.303-065.0	Sheet metal screw ST3,5X25-ST-A2R (IN6R	1.000	ST	0000000000	0000000000
	12	7.303-111.0	Screw 5x50 -10.9-R2R (K-In6Rd)	1.000	ST	0000000000	0000000000
	13	5.063-353.0	Cover	1.000	ST	0000000000	0000000000
X-X	14	6.362-085.0	O-Ring seal 32,0 X 2,5-NBR 70	1.000	ST	0000000000	0000000000
X-X	15	6.362-515.0	O-Ring seal 12,5 X 2,5-NBR 70	1.000	ST	0000000000	0000000000
X	16	5.332-236.0	Helical spring	1.000	ST	0000000000	0000000000
	17	5.581-121.0	Valve seat	1.000	ST	0000000000	0000000000
X-X	18	6.362-386.0	O-Ring seal 5,0 x 1,5-NBR 80	1.000	ST	0000000000	0000000000
X	20	2.883-091.0	Spare part set valve chemistry	1.000	ST	0000000000	0000000000
X-X	21	6.388-559.0	Hose clip	1.000	ST	0000000000	0000000000
X-X	22	6.388-225.0	Hose DN 7	3.000	M	0000000000	0000000000
X-X	23	6.388-515.0	Hose clip	1.000	ST	0000000000	0000000000
X-X	24	6.388-194.0	Hose DN 7	2.000	M	0000000000	0000000000
	25		Stockpiling discontinued	1.000	ST	0000000000	0000000000
	26	6.273-082.0	Cord cellular rubber	1.000	ST	0000000000	0000000000
X-X	27	6.685-716.0	Thermostat	1.000	ST	0000000000	0000000000

61 Cover

ET/VT (spare/wear parts)	Pos	Material #	Name	Qty.	Unit	from ser.nr.	up to ser.nr.
X-X	31	5.115-375.0	Washer	1.000	ST	0000000000	0000000000
X	51	6.631-081.0	Switch	1.000	ST	0000000000	0000000000
	52	5.316-223.0	Bolt	2.000	ST	0000000000	0000000000
	61	6.368-057.0	Cap rubber	1.000	ST	0000000000	0000000000



62 Bottom

ET/VT (spare/wear parts)	Pos	Material #	Name	Qty.	Unit	from ser.nr.	up to ser.nr.
	2	5.365-109.0	Profile gasket	1.000	ST	0000000000	0000000000
	28	6.632-285.0	Contactora 24V50HZ	1.000	ST	0000000000	0000000000
	29	7.303-033.0	Screw M4x16-ST-A2R (KOMBI-IN6RD)	4.000	ST	0000000000	0000000000
	30		Stockpiling discontinued	4.000	ST	0000000000	0000000000
X-X	32	2.883-468.0	Spare parts set ignition transformer	1.000	ST	0000000000	0000000000
X	33	7.303-036.0	Screw M5x8 -St-A2R (In6Rd)	2.000	ST	0000000000	0000000000
X-X	34	6.641-355.0	Cable gland PG9	6.000	ST	0000000000	0000000000
	35	6.641-366.0	Locknut PG 9	5.000	ST	0000000000	0000000000
	36	6.310-034.0	Speed nut	2.000	ST	0000000000	0000000000
	37	7.303-030.0	Screw M4x8 -St-P2R (In6Rd)	8.000	ST	0000000000	0000000000
	38	6.622-021.0	Control transformer 40VA	1.000	ST	0000000000	0000000000
	39		Stockpiling discontinued	1.000	ST	0000000000	0000000000
	40	6.641-369.0	Locknut PG13,5	1.000	ST	0000000000	0000000000
	41	6.641-613.0	Cable gland PG13,5	1.000	ST	0000000000	0000000000
	42		Stockpiling discontinued	1.000	ST	0000000000	0000000000
	43	6.368-064.0	Drain plug	5.000	ST	0000000000	0000000000
	44	6.641-270.0	Plug	1.000	ST	0000000000	0000000000
	48	7.303-064.0	Sheet metal screw ST3,5X19-ST-R2R (In6R)	2.000	ST	0000000000	0000000000
	49	6.643-249.0	Strip terminal	1.000	ZST	0000000000	0000000000
	53	6.641-804.0	Clamping washer 4	1.000	ST	0000000000	0000000000
	54		Stockpiling discontinued	1.000	ST	0000000000	0000000000
	55	6.633-245.0	Overload relay	1.000	ST	0000000000	0000000000
	56	5.326-010.0	Button	1.000	ST	0000000000	0000000000
	57	7.303-508.0	Self-tapping screw M4x25-ST-A2E DIN 7500	1.000	ST	0000000000	0000000000
	58	5.004-326.0	Strap	1.000	ST	0000000000	0000000000

62 Bottom

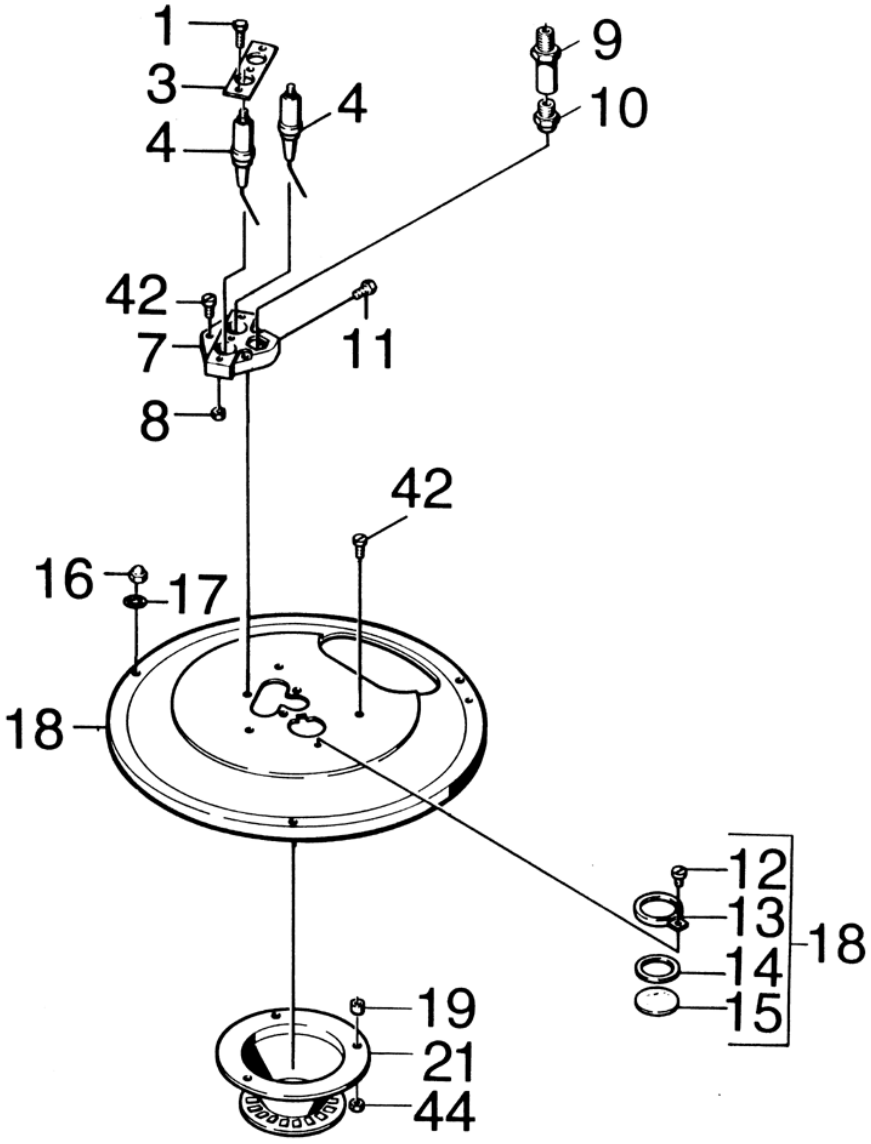
ET/VT (spare/wear parts)	Pos	Material #	Name	Qty.	Unit	from ser.nr.	up to ser.nr.
	59	6.347-033.0	Spacer sleeve	1.000	ST	0000000000	0000000000
	60	6.634-106.0	Push button	1.000	ST	0000000000	0000000000
X-X	62	6.644-052.0	Fuse insert slow G-2,0A	1.000	ST	0000000000	0000000000
	63	6.641-485.0	Locknut PG 9	1.000	ST	0000000000	0000000000

32 Spare parts set ignition transformer (2.883-468.0)

ET/VT (spare/wear parts)	Pos	Material #	Name	Qty.	Unit	from ser.nr.	up to ser.nr.
	10	6.622-157.0	Ignition transformer 400V 50Hz	1.000	ST	0000000000	0000000000
X-X	20	6.647-518.0	Ignition cable	1.000	ST	0000000000	0000000000

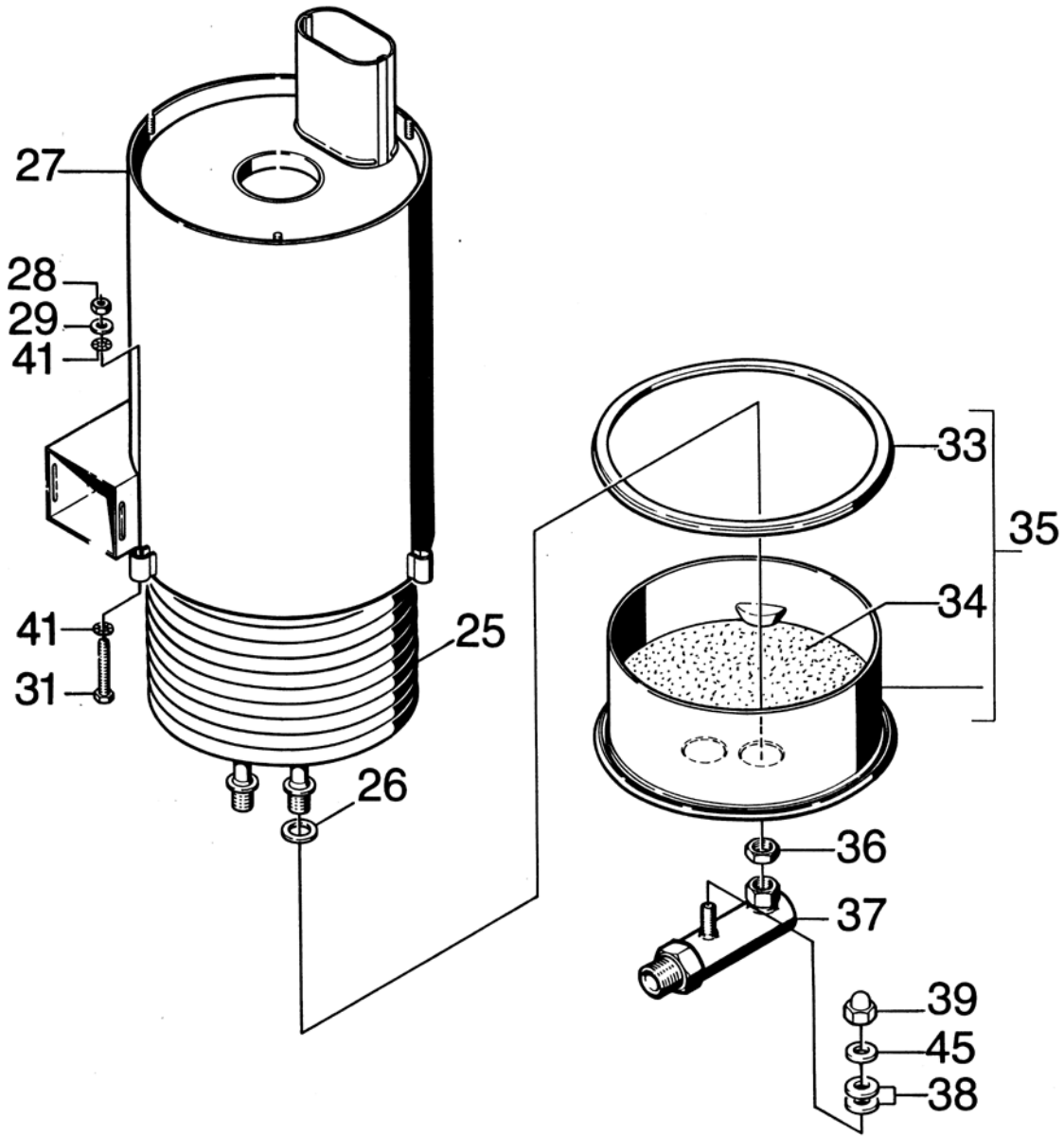
70 Flow heater

Pos	Name	Qty.	Unit	from ser.nr.	up to ser.nr.
71	Flow heater 1	1.000	ST	0000000000	0000000000
72	Flow heater 2	1.000	ST	0000000000	0000000000



71 Flow heater 1

ET/VT (spare/wear parts)	Pos	Material #	Name	Qty.	Unit	from ser.nr.	up to ser.nr.
	1	7.309-019.0	Hexagonal head screw M 5x14-8.8-A2E TORX	3.000	ST	0000000000	0000000000
	3	5.004-228.0	Strap	1.000	ST	0000000000	0000000000
X-X	4	2.883-083.0	Spare part set	2.000	ST	0000000000	0000000000
	7	5.668-001.0	Spark holder	1.000	ST	0000000000	0000000000
X-X	8	7.311-037.0	Hexagon nut M 5-CU2 ISO 4032	3.000	ST	0000000000	0000000000
X	9	5.667-042.0	Nozzle holder	1.000	ST	0000000000	0000000000
X-X	10	6.415-001.0	Nozzle 1,35 60G H	1.000	ST	0000000000	0000000000
X	11	7.306-443.0	Cylinder head screw M5x12-4.8-A2E ISO 1	1.000	ST	0000000000	0000000000
	12	7.303-136.0	Sheet metal screw ST3,5X 6,5-ST-R2R (IN	1.000	ST	0000000000	0000000000
X	13	5.000-590.0	Plate	1.000	ST	0000000000	0000000000
X-X	14	5.364-100.0	Flat gasket	1.000	ST	0000000000	0000000000
X-X	15	6.278-014.0	Glass pane	1.000	ST	0000000000	0000000000
	16	7.311-380.0	Cap nut M6 -6-A2E DIN 1587	3.000	ST	0000000000	0000000000
X	17	7.312-167.0	Toothed lock washer A6,4-FSt-A3E DIN 67	3.000	ST	0000000000	0000000000
	18	4.654-091.0	Cover D.K.	1.000	ST	0000000000	0000000000
	21	4.663-060.0	Burner cage	1.000	ST	0000000000	0000000000
X	42	7.306-443.0	Cylinder head screw M5x12-4.8-A2E ISO 1	6.000	ST	0000000000	0000000000
X-X	44	7.311-002.0	Hexagon nut M5 -8-A2E ISO 4032	3.000	ST	0000000000	0000000000

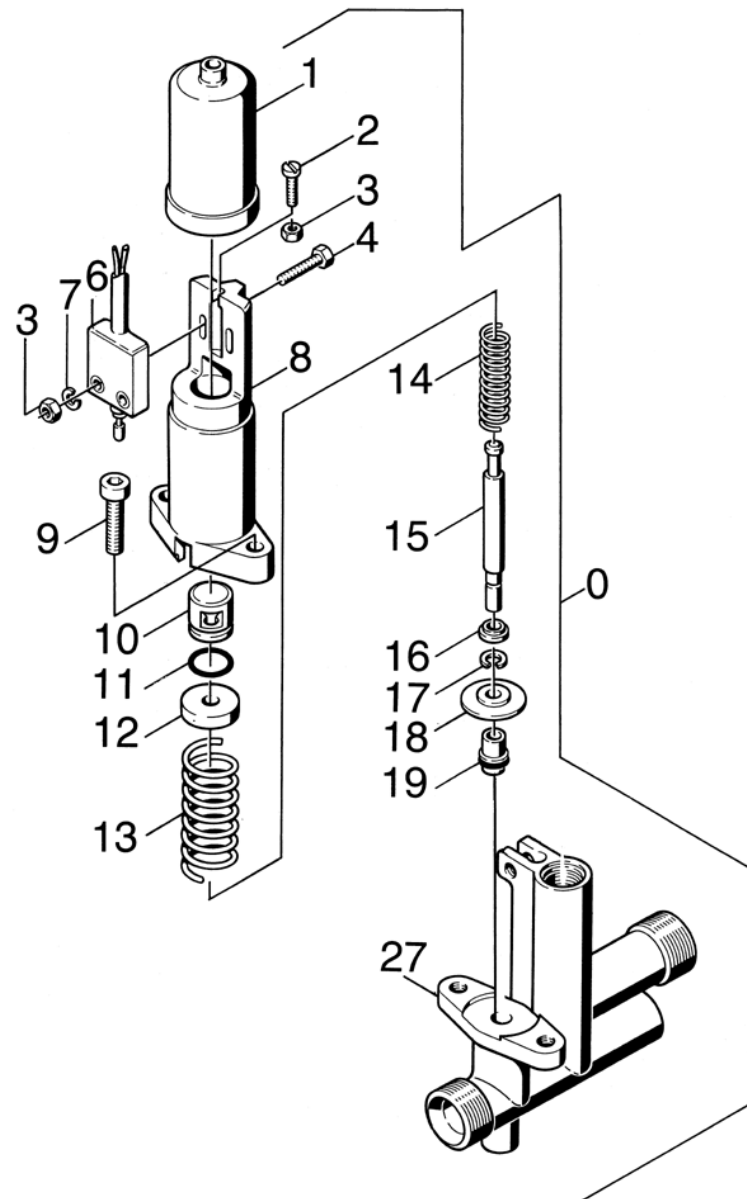


72 Flow heater 2

ET/VT (spare/wear parts)	Pos	Material #	Name	Qty.	Unit	from ser.nr.	up to ser.nr.	Footnote text
X-X	25	4.680-127.0	Heating coil	1.000	ST	0000000000	0000000000	
	25	4.680-129.0	Heating coil VA	1.000	ST			STAINLESS STEEL CONSTRUCTION
X-X	26	5.365-068.0	Profile gasket	2.000	ST	0000000000	0000000000	
	27		Stockpiling discontinued	1.000	ST	0000000000	0000000000	
X-X	28	7.311-510.0	Hexagon nut M 8-8-A2E ISO 7040	3.000	ST	0000000000	0000000000	
X-X	29	7.312-004.0	Washer 8 -200HV-A3E ISO 7090	3.000	ST	0000000000	0000000000	
X-X	31	7.303-165.0	Saucer-head screw M8x55-ST-A0P DIN 603	3.000	ST	0000000000	0000000000	
X-X	33	6.366-009.0	Seal string	1.000	ST	0000000000	0000000000	
	34	2.889-061.0	Refractory material 8kg	1.000	ST	0000000000	0000000000	
X-X	35	4.655-044.0	Bottom pressure boiler	1.000	ST	0000000000	0000000000	
X-X	36	7.311-155.0	Hexagon nut M22x1,5 -Cu2 DIN 936	2.000	ST	0000000000	0000000000	
X-X	37	4.427-123.0	Manifold	1.000	ST	0000000000	0000000000	
	38	5.378-100.0	Spacer	2.000	ST	0000000000	0000000000	
	39	7.311-337.0	Cap nut M 8-5-A2J DIN 917	1.000	ST	0000000000	0000000000	
X-X	41	7.312-166.0	Toothed lock washer A8,4-FSt-A3E DIN 67	3.000	ST	0000000000	0000000000	
	45	7.312-277.0	Washer 8-200HV-A2E ISO7093-1	1.000	ST	0000000000	0000000000	

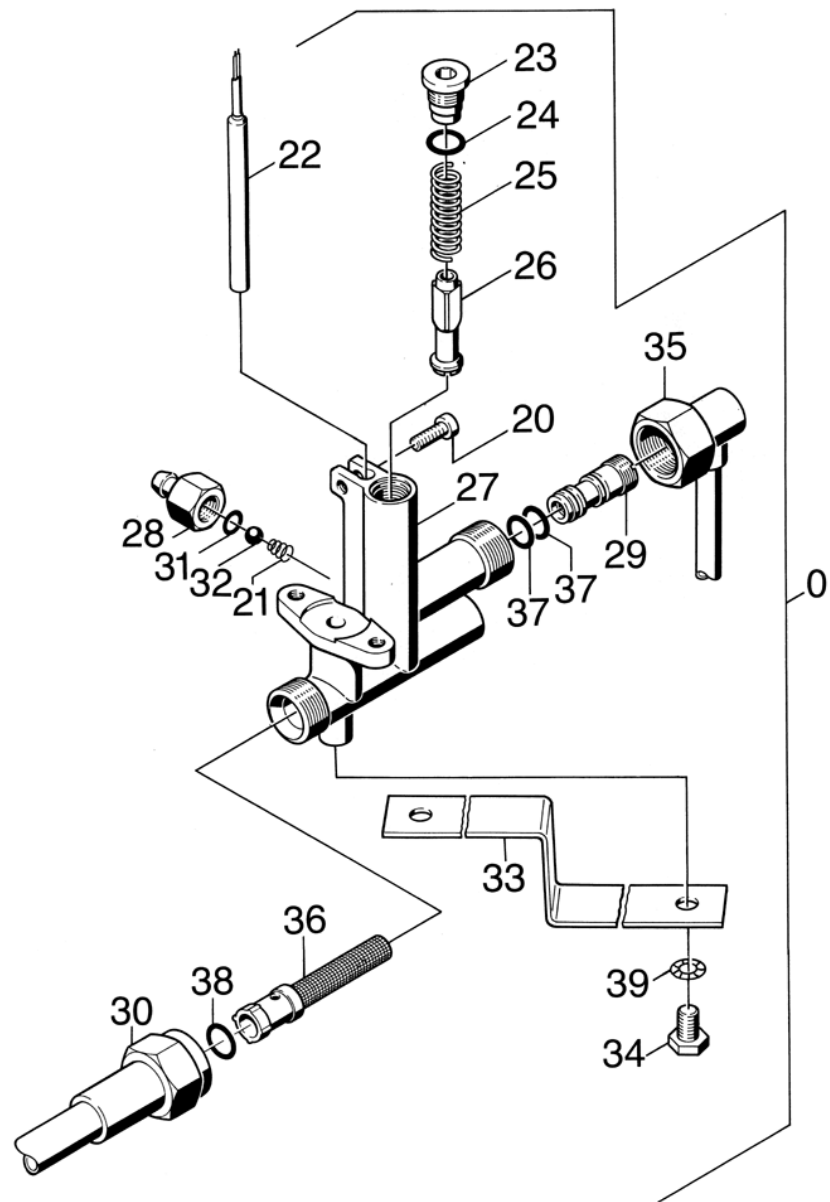
80 Safety system

Pos	Name	Qty.	Unit	from ser.nr.	up to ser.nr.
81	Safety system 1	1.000	ST	0000000000	0000000000
82	Safety system 2	1.000	ST	0000000000	0000000000



81 Safety system 1

ET/VT (spare/wear parts)	Pos	Material #	Name	Qty.	Unit	from ser.nr.	up to ser.nr.
	0		Stockpiling discontinued	1.000	ST	0000000000	0000000000
X-X	1	5.394-060.0	Protection part	1.000	ST	0000000000	0000000000
	2	7.306-406.0	Cylinder head screw M3x16-4.8-A2E ISO 1	1.000	ST	0000000000	0000000000
X	3	7.311-000.0	Hexagon nut M3 -8-A2E ISO 4032	3.000	ST	0000000000	0000000000
X-X	4	7.306-055.0	Screw M3x20 -8.8-R2R (In6Rd)	2.000	ST	0000000000	0000000000
X-X	6	6.631-125.0	Micro switch	1.000	ST	0000000000	0000000000
X-X	7	7.313-000.0	Spring washer B 3-FSt-A3E DIN 127	2.000	ST	0000000000	0000000000
X-X	8	5.060-099.0	Housing	1.000	ST	0000000000	0000000000
X-X	9	7.306-023.0	Cylinder head screw M6x25 -8.8-A2E ISO4	2.000	ST	0000000000	0000000000
X-X	10	5.553-046.0	Piston	1.000	ST	0000000000	0000000000
X-X	11	6.362-169.0	O-Ring seal 12,0 X 2,0	1.000	ST	0000000000	0000000000
X	12	5.112-207.0	Bush	1.000	ST	0000000000	0000000000
X-X	13	5.332-069.0	Helical spring	1.000	ST	0000000000	0000000000
X-X	14	5.332-070.0	Helical spring	1.000	ST	0000000000	0000000000
X-X	15	5.107-023.0	Bar	1.000	ST	0000000000	0000000000
X-X	16	5.112-094.0	Bush	1.000	ST	0000000000	0000000000
X	17	7.343-203.0	Lock washer 4-A2 DIN 6799	1.000	ST	0000000000	0000000000
X-X	18	5.115-147.0	Washer	1.000	ST	0000000000	0000000000
X-X	19	4.553-025.0	Piston	1.000	ST	0000000000	0000000000
	27	5.060-345.0	Housing	1.000	ST	0000000000	0000000000



82 Safety system 2

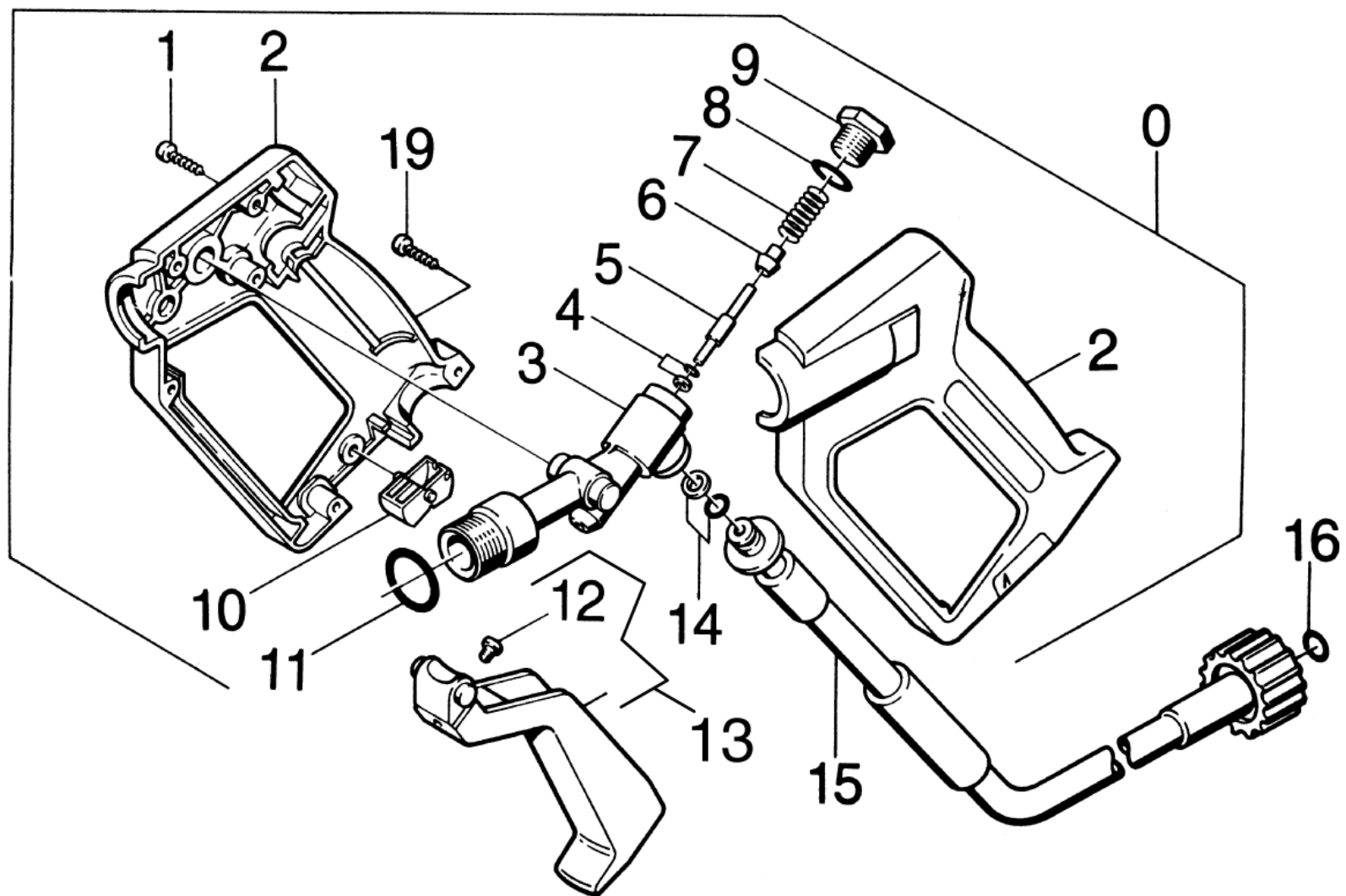
ET/VT (spare/wear parts)	Pos	Material #	Name	Qty.	Unit	from ser.nr.	up to ser.nr.
	0		Stockpiling discontinued	1.000	ST	0000000000	0000000000
	20	7.306-077.0	Screw M5x16 -8.8-R2R (In6Rd)	1.000	ST	0000000000	0000000000
X-X	21	5.332-124.0	Helical spring	1.000	ST	0000000000	0000000000
X-X	22	2.880-194.0	Reed switch replacement	1.000	ST	0000000000	0000000000
X-X	23	5.305-162.0	Shaped screw	1.000	ST	0000000000	0000000000
X-X	24	6.362-482.0	O-Ring seal 10 x 1,5-NBR 70	1.000	ST	0000000000	0000000000
X-X	25	5.332-057.0	Helical spring	1.000	ST	0000000000	0000000000
X-X	26	4.553-022.0	Piston	1.000	ST	0000000000	0000000000
	27	5.060-345.0	Housing	1.000	ST	0000000000	0000000000
	28	5.443-202.0	Hose stem	1.000	ST	0000000000	0000000000
X-X	29	5.769-152.0	Nozzle insert D1,9/D2,5/L38	1.000	ST	0000000000	0000000000
X-X	30	6.388-910.0	High pressure hose DN 8	1.000	ST	0000000000	0000000000
X-X	31	6.362-383.0	O-Ring seal 6,0 X 2,0	1.000	ST	0000000000	0000000000
	32	7.401-908.0	Sphere 7 G300 -1.4301 DIN 5401	1.000	ST	0000000000	0000000000
X	34	7.304-394.0	Hexagonal head screw M8x12 -8.8-A2E ISO	1.000	ST	0000000000	0000000000
	35	4.421-064.0	Pipelines	1.000	ST	0000000000	0000000000
X-X	36	6.414-327.0	Strainer	1.000	ST	0000000000	0000000000
X-X	37	6.362-384.0	O-Ring seal 9x1,5 - NBR 70	2.000	ST	0000000000	0000000000
X-X	38	2.880-990.0	Spare part set O-Ring 5x -Kaercher	1.000	ST	0000000000	0000000000
X	39	7.313-004.0	Spring washer B 8-FSt-A3E DIN 127	1.000	ST	0000000000	0000000000

22 Reed switch replacement (2.880-194.0)

Pos	Material #	Name	Qty.	Unit	from ser.nr.	up to ser.nr.
10	6.631-105.0	Reed switch	1.000	ST	0000000000	0000000000

90 Accessories

Pos	Name	Qty.	Unit	from ser.nr.	up to ser.nr.
91	Hand trigger gun	1.000	ST	0000000000	0000000000
92	Jet pipe	1.000	ST	0000000000	0000000000

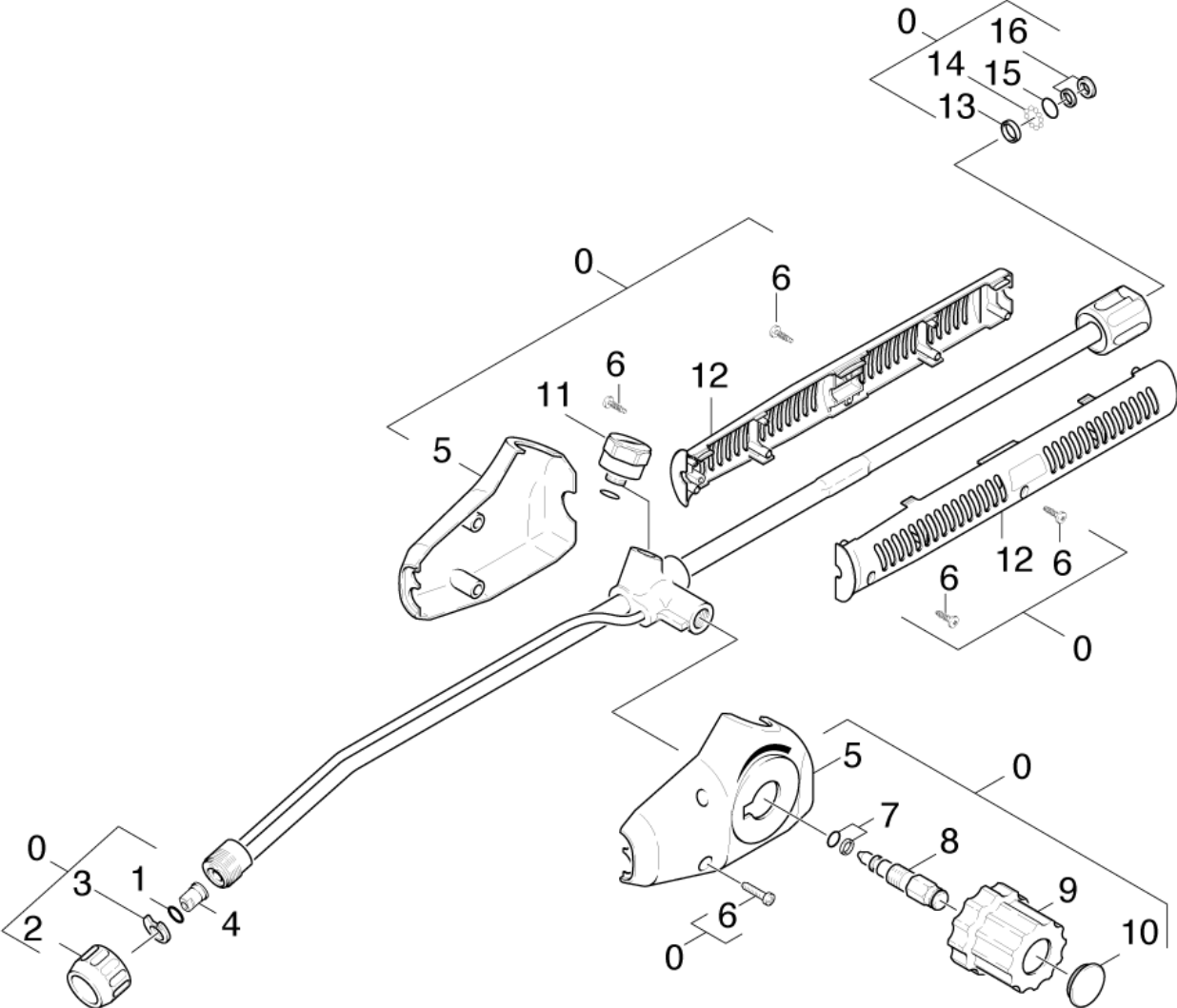


91 Hand trigger gun

ET/VT (spare/wear parts)	Pos	Material #	Name	Qty.	Unit	from ser.nr.	up to ser.nr.
X-X	0	4.775-080.0	Hand trigger gun replacement	1.000	ST	0000000000	0000000000
	1	7.303-096.0	Screw 4x22 -ST-10.9-R2R (IN6RD)	5.000	ST	0000000000	0000000000
	2	5.321-230.0	Handhold few	1.000	ST	0000000000	0000000000
	3	4.427-131.0	Manifold	1.000	ST	0000000000	0000000000
X-X	4	6.362-571.0	O-Ring seal complete /1ST.-R	1.000	ST	0000000000	0000000000
	5	5.107-097.0	Bar	1.000	ST	0000000000	0000000000
X-X	6	5.582-084.0	Valve disc	1.000	ST	0000000000	0000000000
	7	5.332-157.0	Helical spring	1.000	ST	0000000000	0000000000
X	8	6.362-584.0	O-Ring seal 12,42X 1,78	1.000	ST	0000000000	0000000000
	9	5.411-067.0	Screw plug	1.000	ST	0000000000	0000000000
	10	5.481-052.0	Lever	1.000	ST	0000000000	0000000000
	11	6.362-496.0	O-Ring seal 17,12X 2,62-NBR 70	1.000	ST	0000000000	0000000000
	12	7.307-417.0	Threaded pin M8x16 -45H-A2E ISO 4026	1.000	ST	0000000000	0000000000
	13	4.481-050.0	Lever	1.000	ST	0000000000	0000000000
X-X	14	6.363-115.0	O-Ring seal complete 1ST.-R.	1.000	ST	0000000000	0000000000
X-X	15	6.389-853.0	MANGUEIRA DN6 25MPa 10m HD 655 / 790	1.000	ST	0000000000	0000000000
X-X	16	2.880-990.0	Spare part set O-Ring 5x -Kaercher	1.000	ST	0000000000	0000000000
	19	6.303-025.0	Oval head screw 4,2x16-St-vz	3.000	ST	0000000000	0000000000
	100	2.883-192.0	Spare part set 1450HW,1500HWS+SUPE	1.000	ST	0000000000	0000000000

100 Spare part set 1450HW,1500HWS+SUPE (2.883-192.0)

ET/VT (spare/wear parts)	Pos	Material #	Name	Qty.	Unit	from ser.nr.	up to ser.nr.
	10	5.332-157.0	Helical spring	1.000	ST	0000000000	0000000000
X-X	20	5.582-084.0	Valve disc	1.000	ST	0000000000	0000000000
	30	6.288-072.0	Silicon grease	1.000	ST	0000000000	0000000000
X-X	40	6.362-422.0	O-Ring seal complete 1ST.-R.	1.000	ST	0000000000	0000000000
	50	6.362-496.0	O-Ring seal 17,12X 2,62-NBR 70	1.000	ST	0000000000	0000000000
X-X	60	6.362-571.0	O-Ring seal complete /1ST.-R	1.000	ST	0000000000	0000000000
X	70	6.362-584.0	O-Ring seal 12,42X 1,78	1.000	ST	0000000000	0000000000



92 Jet pipe

ET/VT (spare/wear parts)	Pos	Material #	Name	Qty.	Unit	from ser.nr.	up to ser.nr.
X-X	0	4.760-230.0	Double jet pipe	1.000	ST	0000000000	0000000000
X-X	1	2.880-990.0	Spare part set O-Ring 5x -Kaercher	1.000	ST	0000000000	0000000000
	2	5.401-153.0	Screw connector part	1.000	ST	0000000000	0000000000
	3	5.000-825.0	Plate	1.000	ST	0000000000	0000000000
X-X	4	2.883-400.0	Power nozzle 25052	1.000	ST	0000000000	0000000000
	5	5.394-273.0	Protection part pair	1.000	ST	0000000000	0000000000
	6	6.303-025.0	Oval head screw 4,2x16-St-vz	4.000	ST	0000000000	0000000000
X-X	7	6.363-037.0	O-Ring seal complete 1ST.-R.	1.000	ST	0000000000	0000000000
	8	5.291-047.0	Spindle	1.000	ST	0000000000	0000000000
X-X	9	5.321-321.0	Handhold	1.000	ST	0000000000	0000000000
X-X	10	5.132-010.0	Plug	1.000	ST	0000000000	0000000000
	11	6.421-143.0	Pressure gauge 0-250BAR	1.000	ST	0000000000	0000000000
	12	5.321-150.0	HANDLE (PART NO=ONE HALF)	2.000	ST	0000000000	0000000000
	13	6.362-529.0	Joint ring 12x1,5	1.000	ST	0000000000	0000000000
X-X	14	7.401-921.0	Sphere 4 G20 -1.4034 DIN 5401	12.000	ST	0000000000	0000000000
X-X	15	6.362-524.0	O-Ring seal 17,0 X 1,5	1.000	ST	0000000000	0000000000
X-X	16	4.363-692.0	Grooved ring kpl. -nur fuer Ersatz-	1.000	ST	0000000000	0000000000